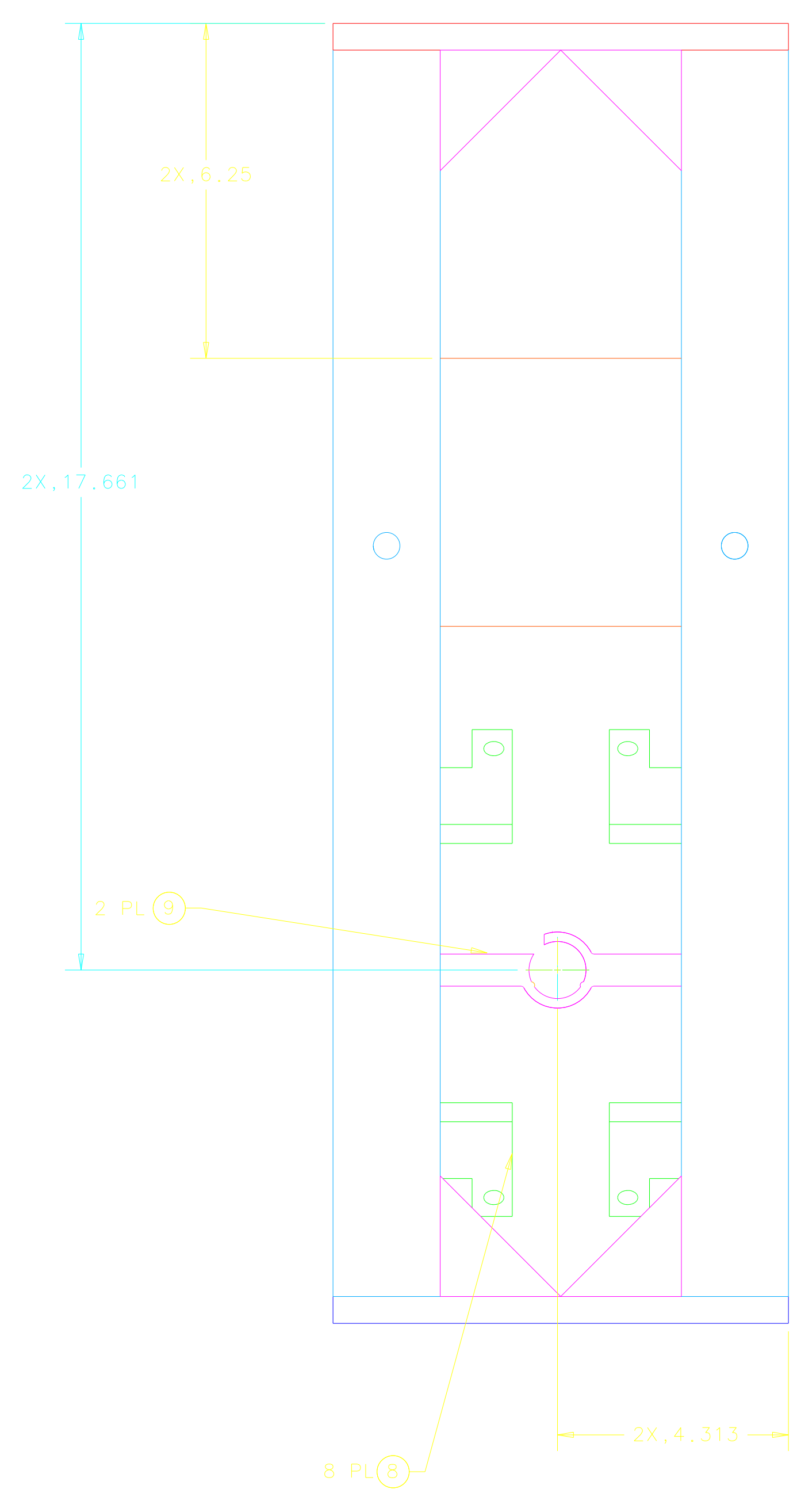
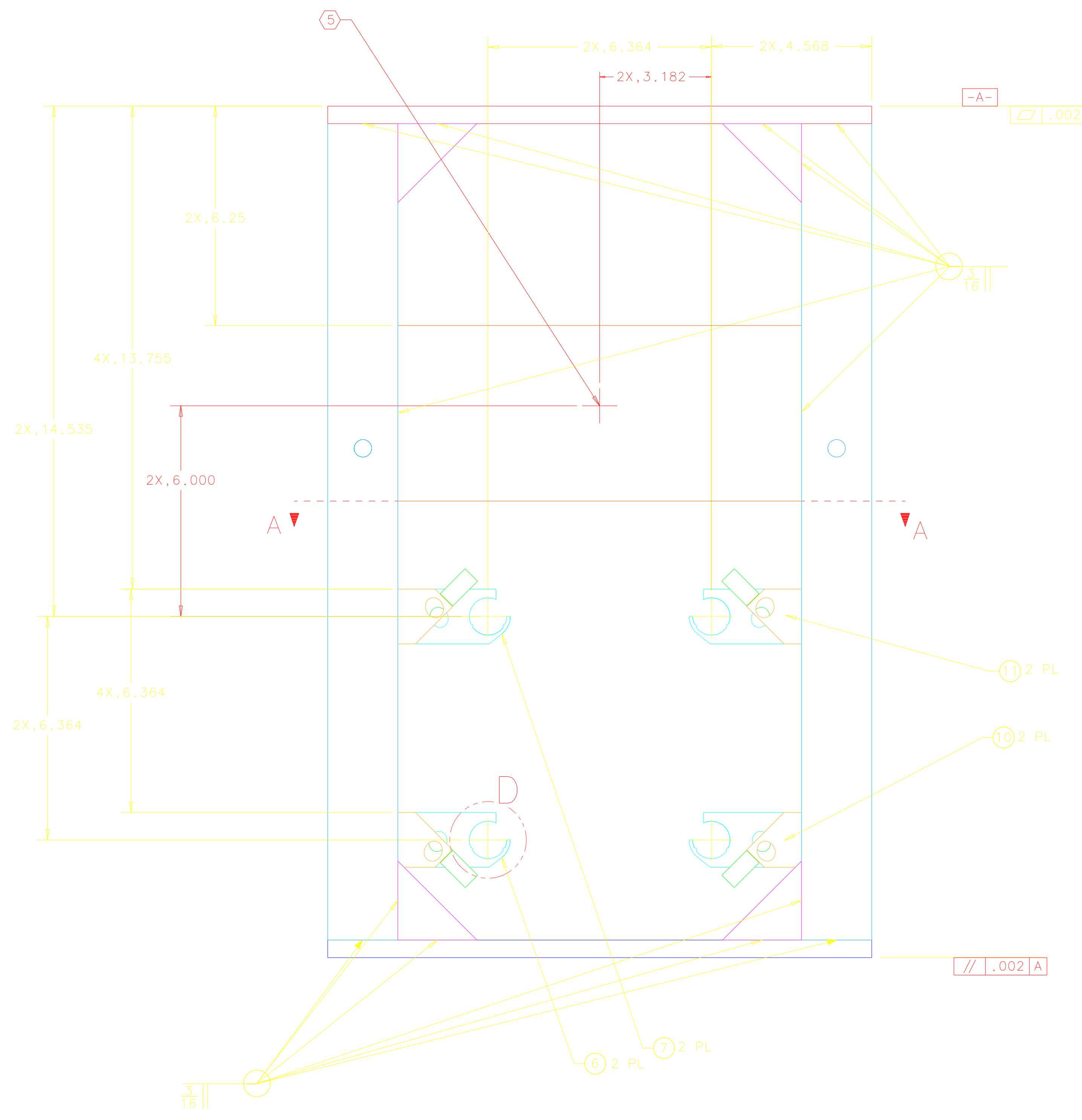
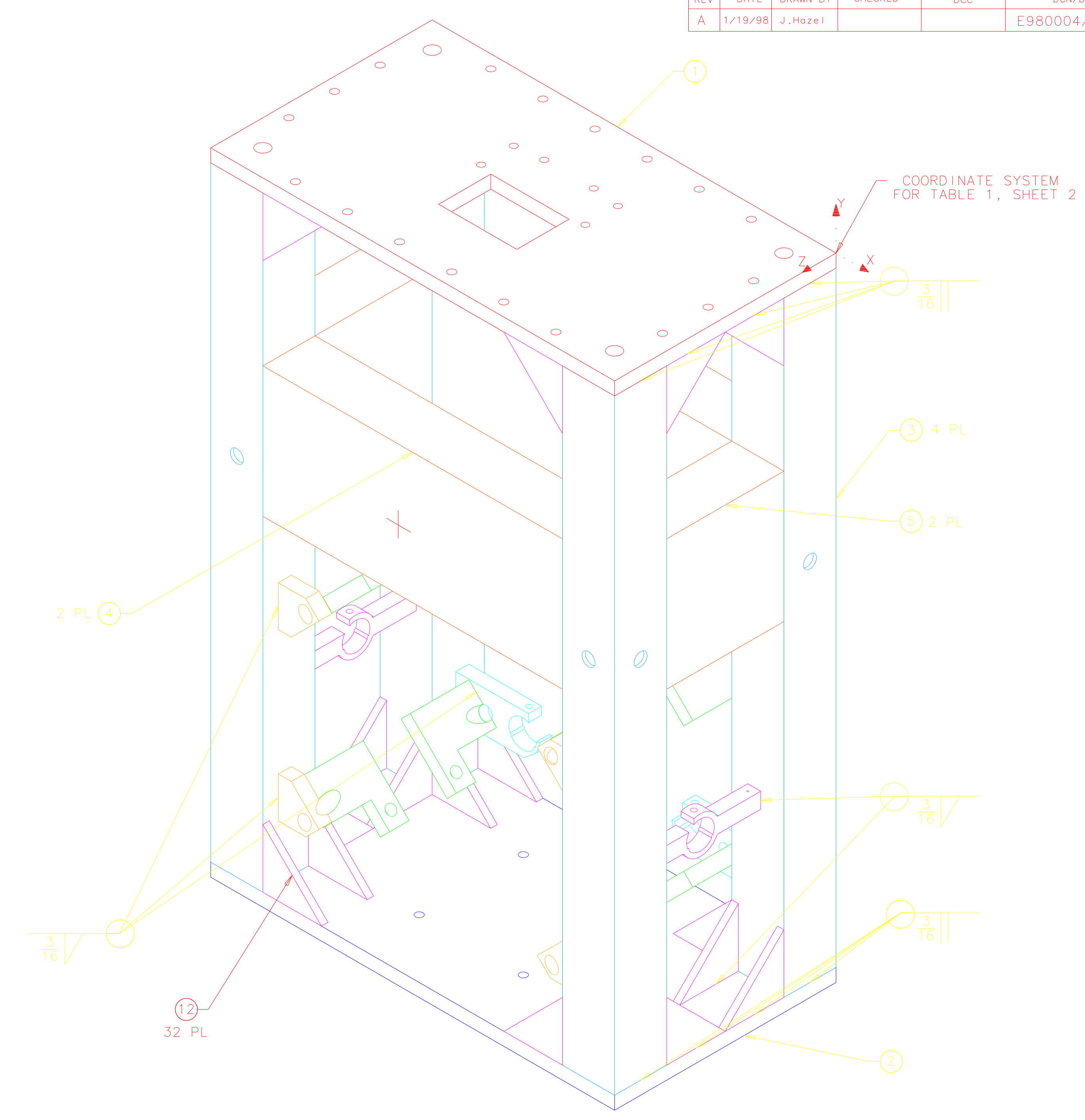
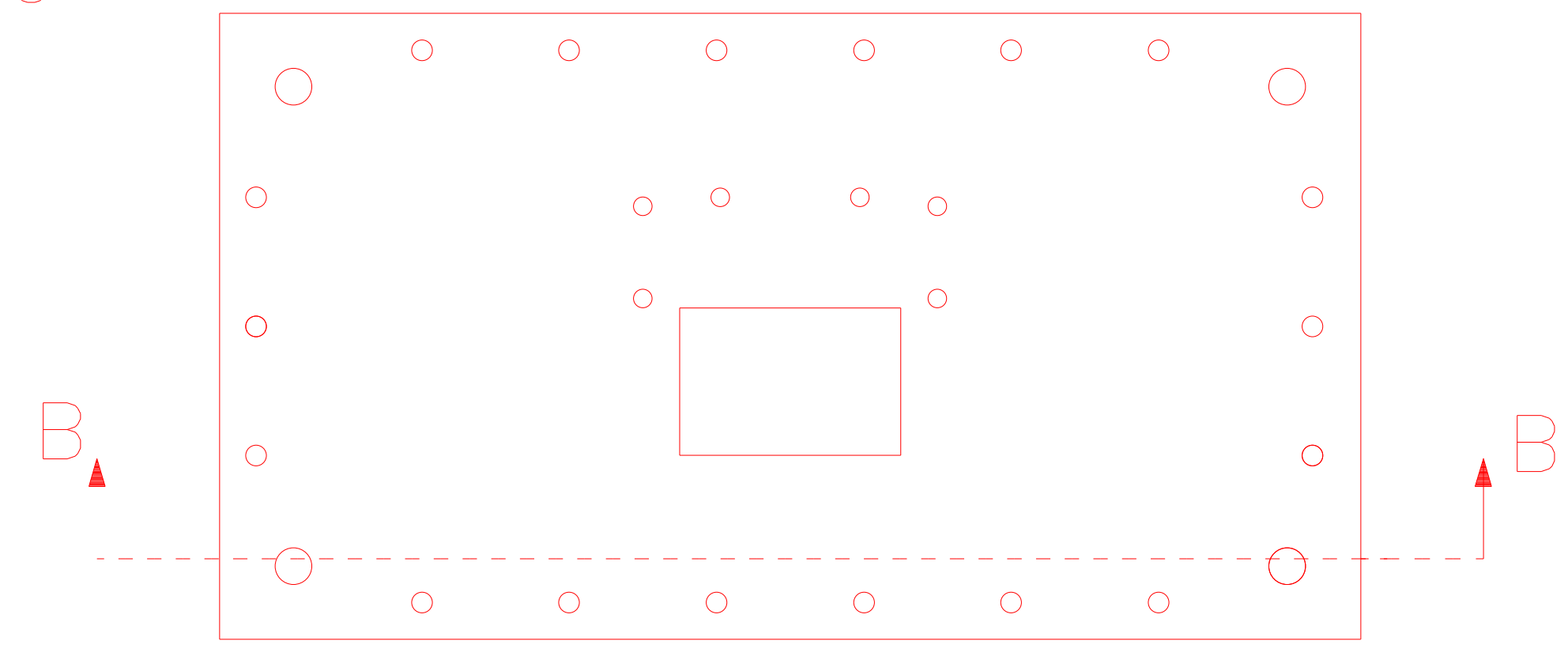


REV	DATE	DRAWN BY	CHECKED	DC	DCN/DESCRIPTION
A	1/19/98	J. Hazel			E980004/INITIAL RELEASE

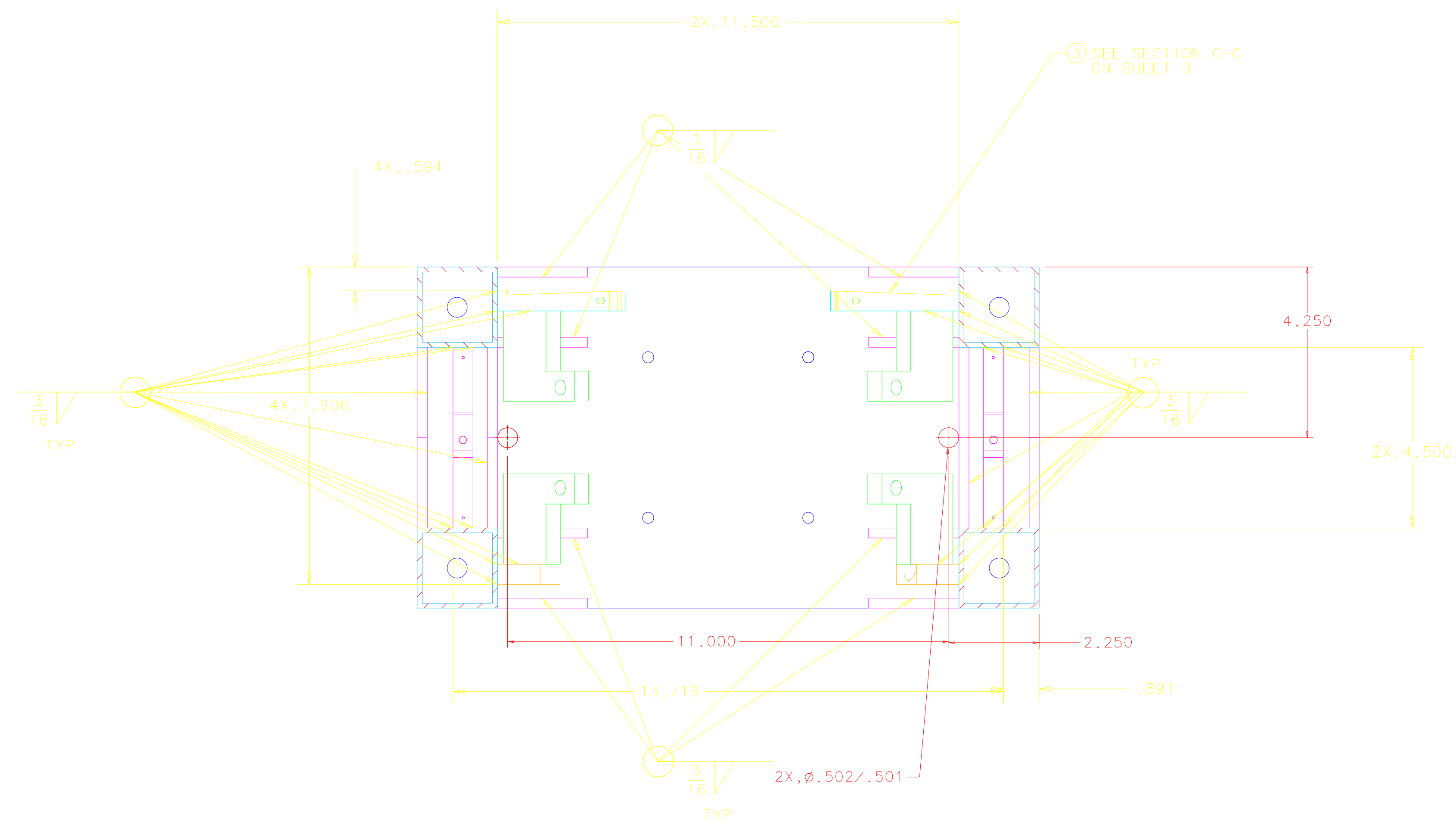
- NOTES: (UNLESS OTHERWISE SPECIFIED)
- SPECIFICATIONS FOR THE CONSTRUCTION OF THIS ASSEMBLY ARE DETAILED IN LIGO E970038, THE LARGE OPTIC SUSPENSION STRUCTURAL FABRICATION SPECIFICATION.
 - THESE FEATURES TO BE MACHINED AFTER ANNEALING.
 - AFTER WELDING AND ANNEALING, FLY CUT THESE SURFACES, OF BRACKETS FIND NOS. 6 AND 7, AT A 2° ANGLE. REMOVE MATERIAL FROM THE CENTER OF THE ASSEMBLY TO .25 FROM THE LEGS.
 - TABLE 1 DEFINES THE VECTORS THAT ARE THE CENTERLINES OF THE EIGHT THREADED HOLES DEFINED IN VIEW E ON SHEET 2.
 - ETCH OR SCRIBE CROSSHAIRS, POSITION AND APPROX SIZE AS SHOWN, ONTO FRONT AND BACK OF STRUCTURE. ETCH .01 WIDE MAX. AND .02 MAX BELOW SURFACE, AFTER ANNEALING.



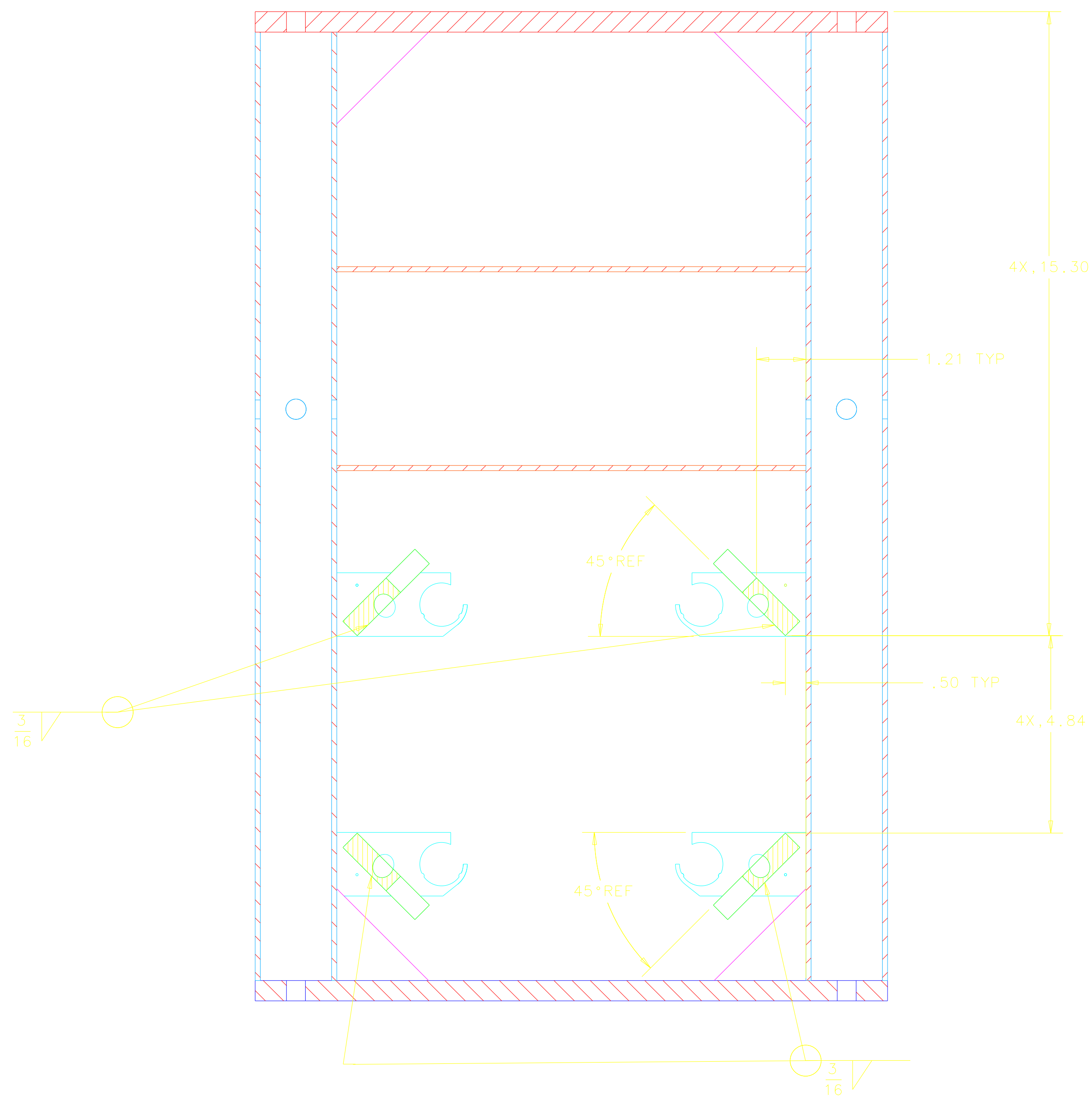
QTY	PART NO	DESCRIPTION	MATERIAL SPECIFICATION	UNIT
32		GUSSET, 2.25 x 2.25 x 45°	.13 THICK 304 STAINLESS	12
2	D960143	LOS BRACKET, FRONT, TOP		11
2	D960142	LOS BRACKET, FRONT, BOTTOM		10
2	D960141	LOS BRACKET, SENSOR/ACTUATOR, SIDE		9
8	D960140	LOS BRACKET, SAFETY STOP		8
2	D960137	LOS BRACKET, SENSOR/ACTUATOR, TOP		7
2	D960136	LOS BRACKET, SENSOR/ACTUATOR, BOTTOM		6
2	D960506	LOS SIDE STIFFENER		5
2	D960502	LOS FRONT STIFFENER		4
4	D960504	LOS LEG		3
1	D960505	LOS BOTTOM PLATE		2
1	D960503	LOS TOP PLATE		1

APPROVALS		DATE	PARTS LIST	
DRAWN	J. Hazel	1/98	LIGO CALIFORNIA INSTITUTE OF TECHNOLOGY MASSACHUSETTS INSTITUTE OF TECHNOLOGY	
CHECKED			RECYCLING MIRROR LOS STRUCTURE ASSEMBLY	
MATERIAL			SIZE	D970551
FINISH			SCALE	1/2
NEXT ASSEMBLY		D970564, D970577	REV	A
FILE LOCATION		home/dcc/docs/D970551.pdf	SHEET	1 OF 3

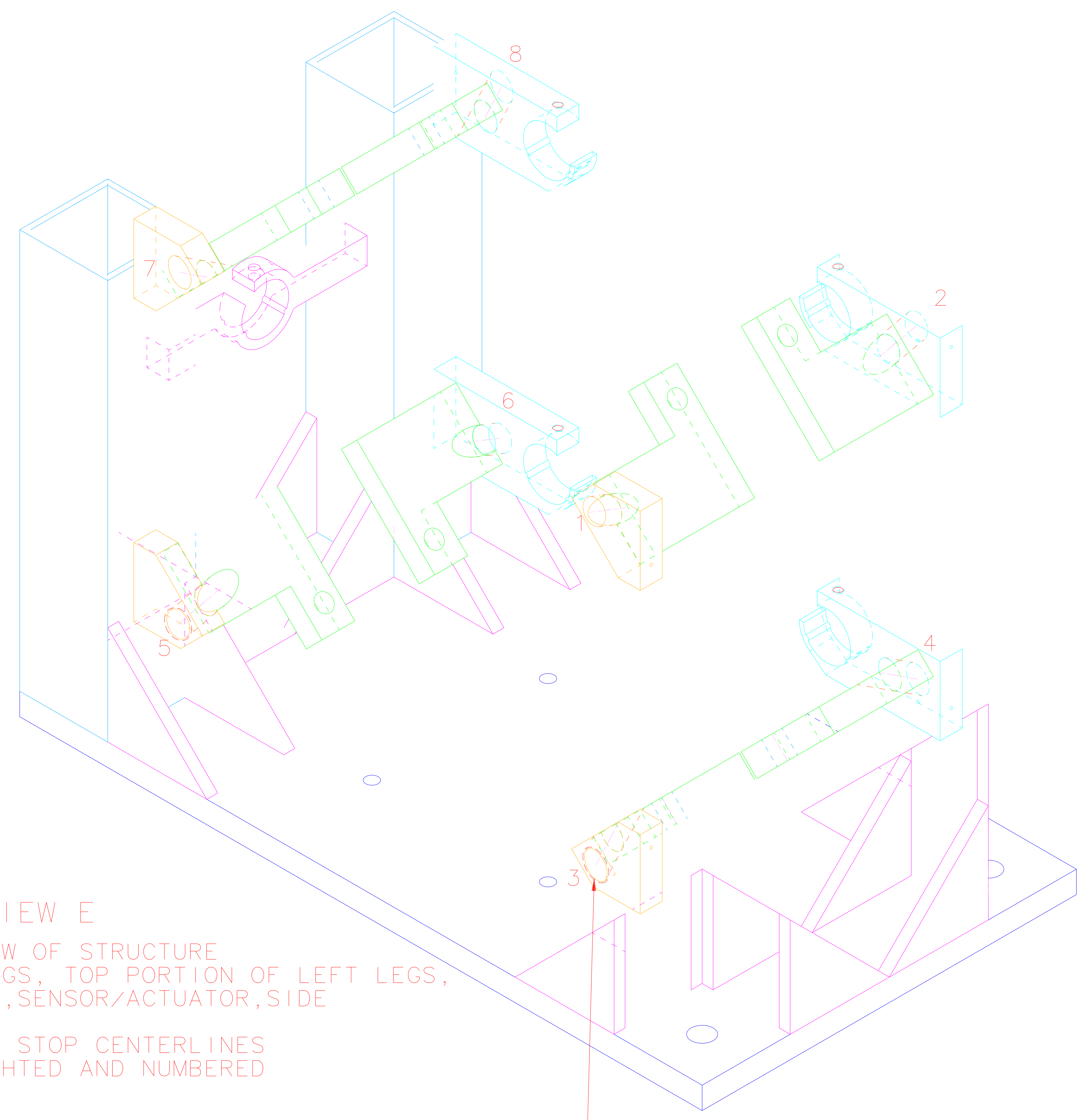
REV	DATE	DRAWN BY	CHECKED	DCG	DCN/DESCRIPTION
A	1/19/98	J. Hazel			E980004/INITIAL RELEASE



SECTION A-A



SECTION B-B



VIEW E
ISO VIEW OF STRUCTURE
WITHOUT: RIGHT LEGS, TOP PORTION OF LEFT LEGS,
RIGHT LOS BRACKET, SENSOR/ACTUATOR, SIDE
CHAMFER STOP CENTERLINES
HIGHLIGHTED AND NUMBERED

TABLE 1 CHAMFER STOP VECTORS

CHAMFER STOP NUMBER	START POINT	END POINT
1	-3.033, -14.332, 7.906	-3.525, -15.350, 6.068
2	-2.982, -14.088, 0.594	-3.525, -15.213, 2.627
3	-3.009, -21.295, 7.906	-3.525, -20.227, 5.975
4	-3.061, -21.041, 0.594	-3.525, -20.082, 2.330
5	-12.491, -21.295, 7.906	-11.975, -20.227, 5.975
6	-12.439, -21.041, 0.594	-11.975, -20.082, 2.330
7	-12.467, -14.332, 7.906	-11.975, -15.350, 6.068
8	-12.518, -14.088, 0.594	-11.975, -15.213, 2.627

START POINTS LIE ON A PLANE OF A BRACKET OF THIS ASSEMBLY.
ALL POINTS ARE REFERENCED FROM (0,0,0) OF COORDINATE SYSTEM
DESIGNATED ON ISO VIEW ON SHEET 1.

NEXT ASSEMBLY
D970564.D970577
FILE LOCATION
home/dcc/docs/D970551.pdf

UNLESS OTHERWISE SPECIFIED DIMENSIONS ARE IN INCHES FRACTIONS DECIMALS ANGLES :0.5 0.XX±0.03 0.XXX±0.005 DO NOT SCALE DRAWING	APPROVALS J. Hazel	DATE 1/98	PARTS LIST LIGO CALIFORNIA INSTITUTE OF TECHNOLOGY MASSACHUSETTS INSTITUTE OF TECHNOLOGY RECYCLING MIRROR LOS STRUCTURE ASSEMBLY	TITLE D970551	REV A
MATERIAL			SCALE 1/2	SHEET 2 OF 3	

1 2 3 4 5 6 7 8

REV	DATE	DRAWN BY	CHECKED	DCG	DCN/DESCRIPTION
A	1/19/98	J. Hazel			E980004/INITIAL RELEASE

H

G

F

E

D

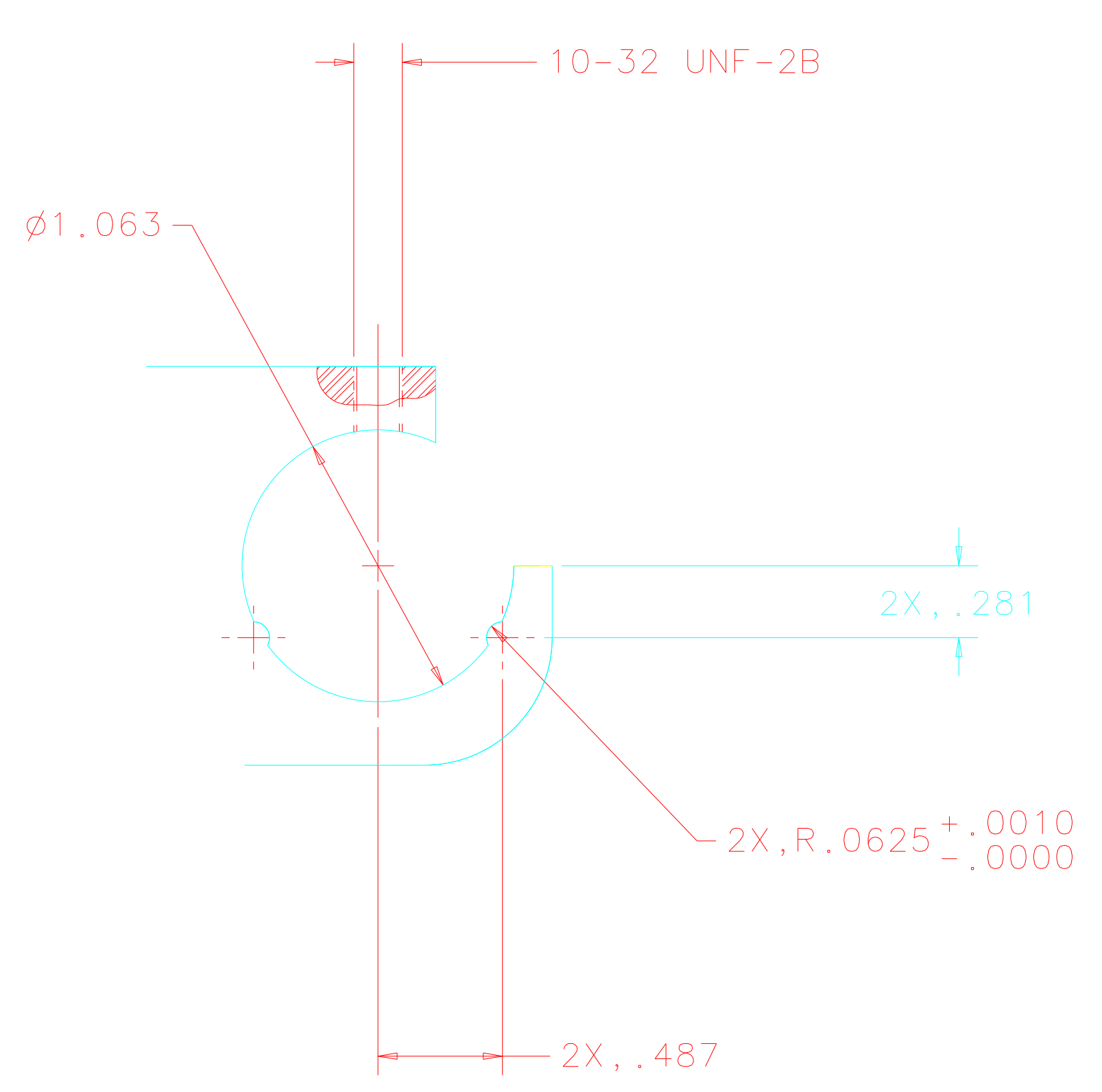
C

B

A



SECTION C-C
FLY CUT DEFINED
IN NOTE ③



VIEW D ②
SCALE 4/1
TYPICAL 6 PLACES

NEXT ASSEMBLY
D970564, D970577
FILE LOCATION
home/dcc/docs/D970551sh3.pdf

REV	DATE	DRAWN BY	CHECKED	DCG	DCN/DESCRIPTION
A	1/19/98	J. Hazel			E980004/INITIAL RELEASE

APPROVALS	DATE	TITLE
J. Hazel	1/98	RECYCLING MIRROR LOS STRUCTURE ASSEMBLY

MATERIAL	FINISH	SCALE	SHEET	OF	TOTAL
		1/2	3	OF	3

1 2 3 4 5 6 7 8