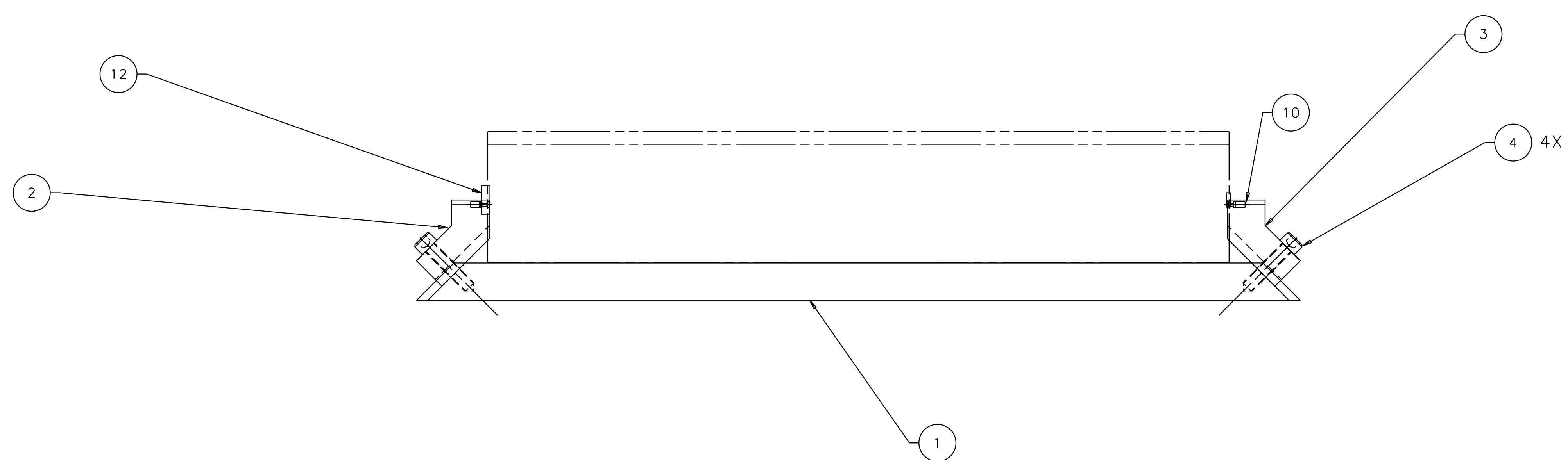
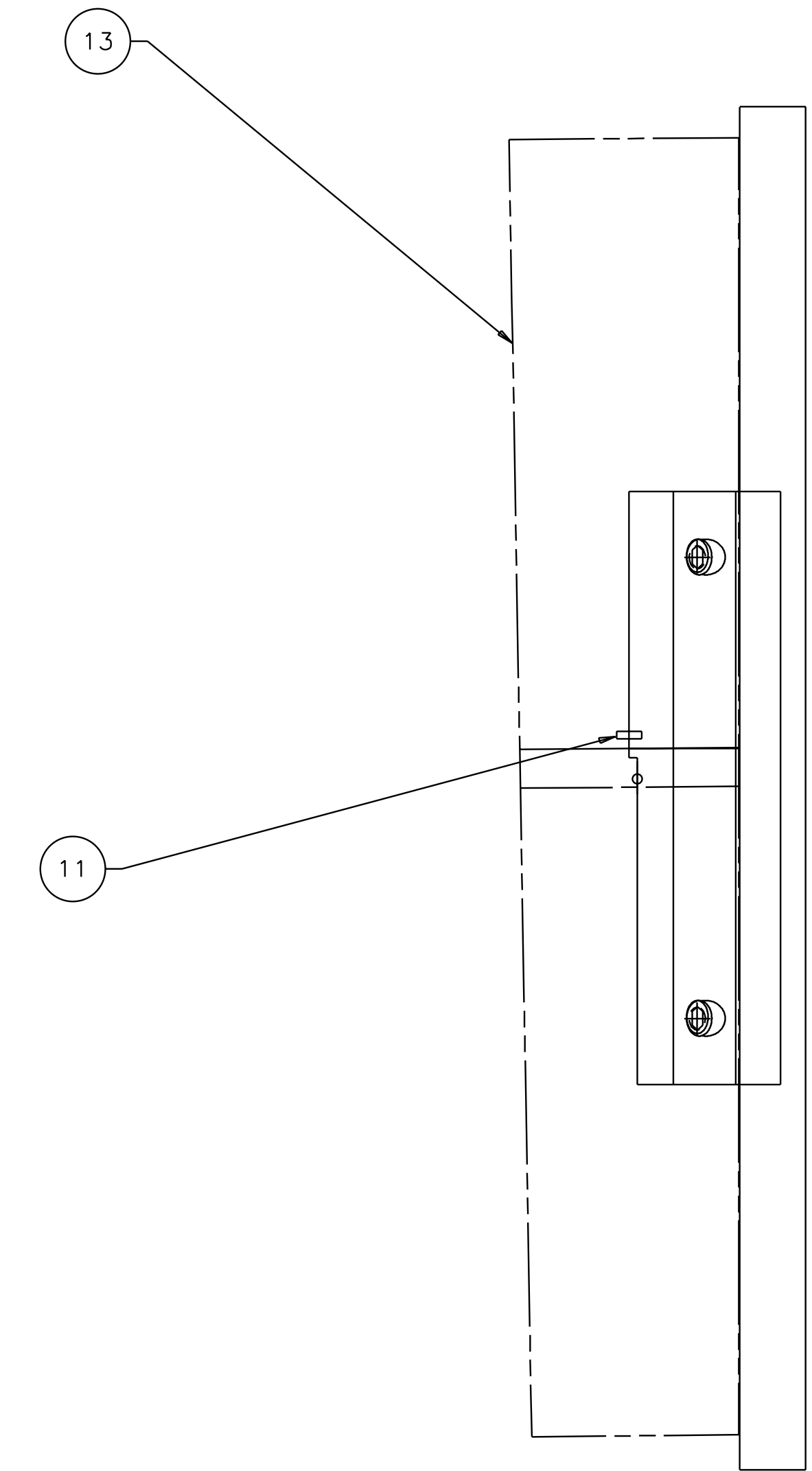
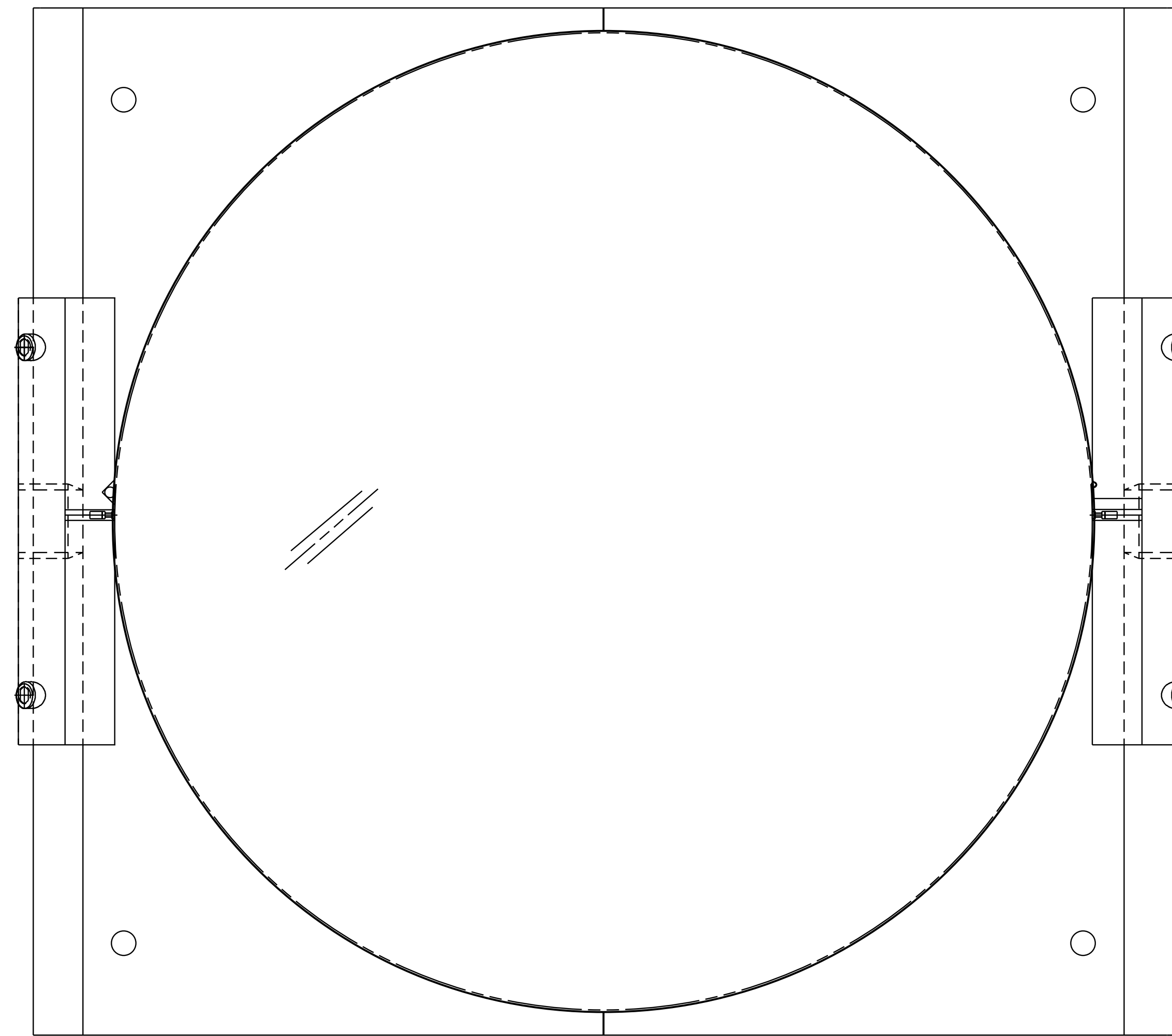


1 2 3 4 5 6 7 8

NOTES: (UNLESS OTHERWISE SPECIFIED)
 1. THIS FIXTURE IS TO BE USED WITH AN OPTIC THAT IS $\phi 9.84"$ X $1.575"$ THICK ($\phi 25\text{cm}$ X 4cm THICK) WITH A 1 DEGREE, THICK-SIDE-UP ORIENTED WEDGE.
 2. CLOSE SLIP FIT.
 3. THE RIGHT BLOCK, TOP IS USED TO MOUNT THE GUIDE ROD AND THE LEFT BLOCK, TOP IS USED TO MOUNT THE WIRE STANDOFF.
 4. USE OF THIS FIXTURE IS COVERED IN LIGO-E970154.
 5. SPECIFICATIONS COVERING THE FABRICATION OF THIS ASSEMBLY ARE DETAILED IN LIGO-E970155, THE LARGE OPTIC SUSPENSION (LOS) FIXTURES AND COMPONENTS FABRICATION SPECIFICATION.

REV	DATE	DRAWN BY	CHECKED	DCC	DCN/DESCRIPTION
A	8-14-98	J. Romie			E980220/INITIAL RELEASE
B	9-22-98	J. Romie			E980249/ADD HOLES IN BASE
C	6-21-99	J. Romie			E990258/CHANGE DIM. SH 2
D	2-9-01	J. Romie			E990258/SH2.3.500 WAS 3.000

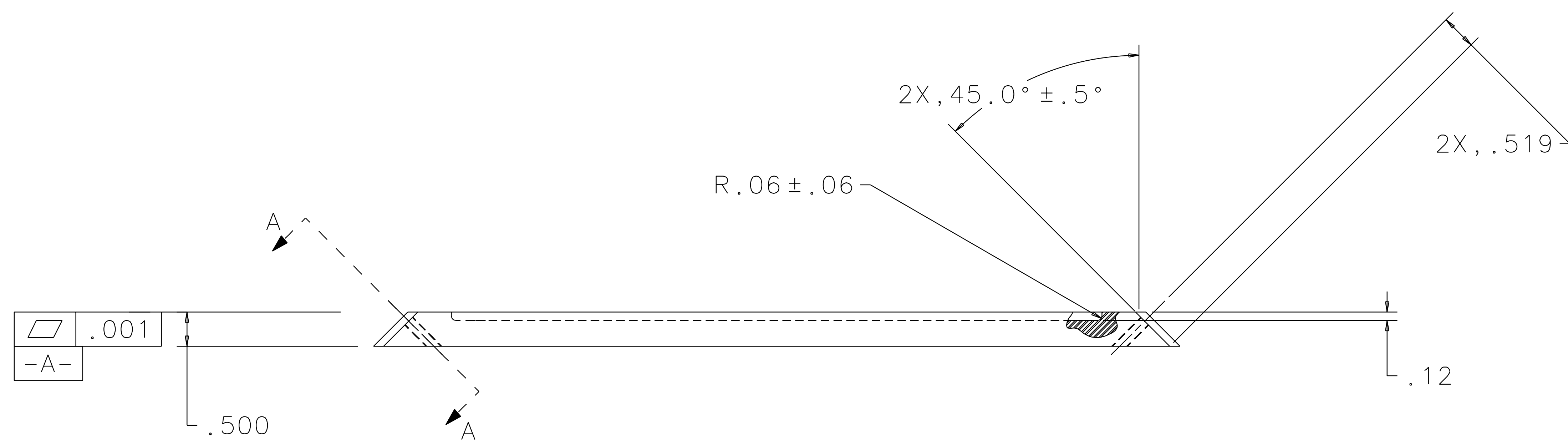
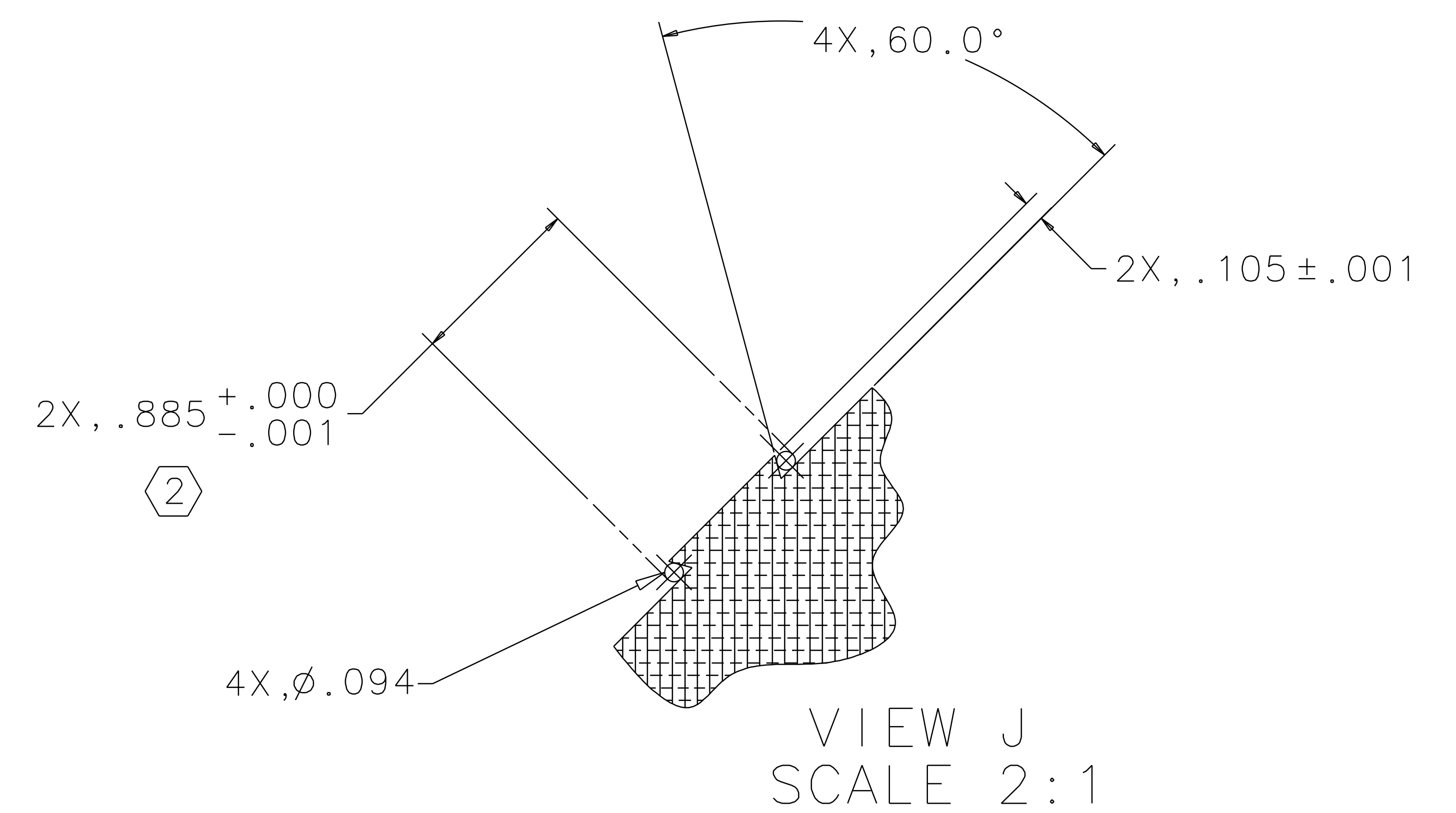
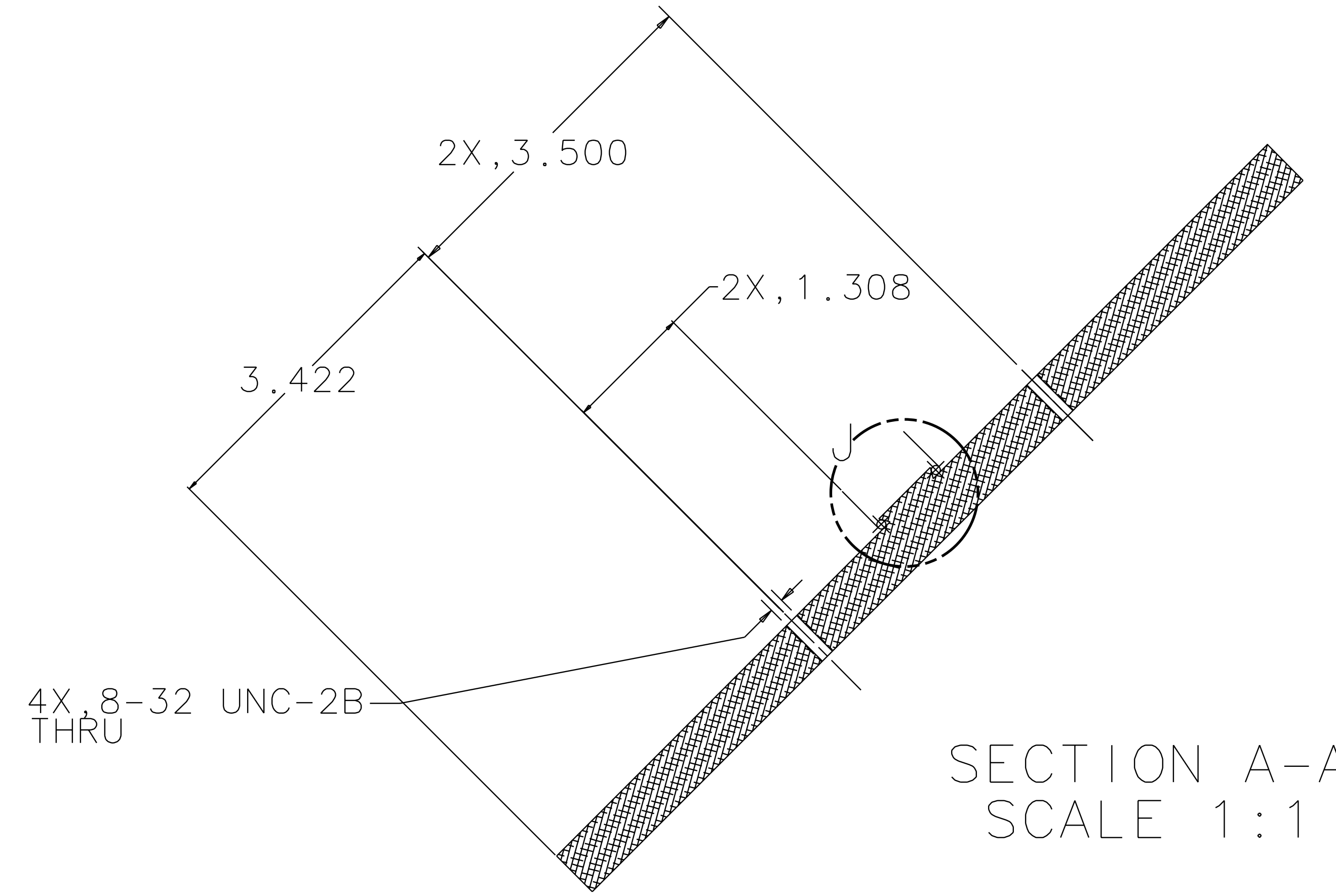
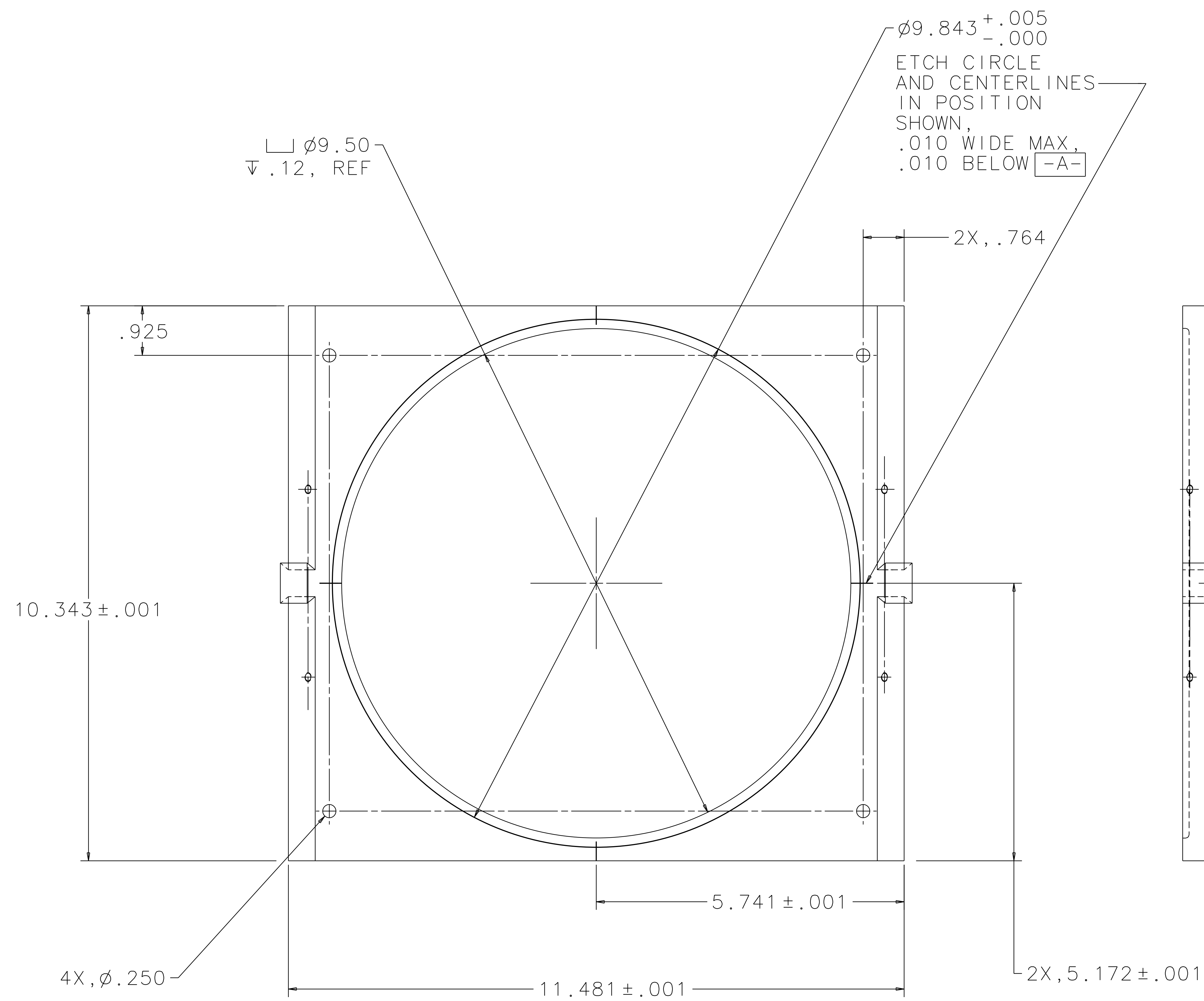


REF	QTY	PART OR IDENTIFYING NO.	NOMENCLATURE OR DESCRIPTION	MATERIAL SPECIFICATION	ITEM NO.
			OPTIC		13
			WIRE STANDOFF		12
			GUIDE ROD		11
			MAGNET/STANDOFF ASSEMBLY		10
					9
					8
					7
					6
					5
					4
1	1	DETAIL, SHEET 3	RIGHT BLOCK, TOP		3
1	1	DETAIL, SHEET 3	LEFT BLOCK, TOP		2
1	1	DETAIL, SHEET 2	BASE PLATE		1

UNLESS OTHERWISE SPECIFIED DIMENSIONS ARE IN INCHES		APPROVALS		DATE	LIGO CALIFORNIA INSTITUTE OF TECHNOLOGY MASSACHUSETTS INSTITUTE OF TECHNOLOGY	
TOLERANCES ARE:	FRACTIONS	DECIMALS	ANGLES		TITLE	
0.XX \pm 0.01					GUIDE ROD FIXTURE, BEAMSPLITTER OPTICS	
0.XXX \pm 0.005					D970550	
ANGLES \pm 0.5°					SCALE 1/1	
DO NOT SCALE DRAWING		DRAWN J. Romie		8/98	REV D	
NEXT ASSEMBLY D970505, D970539		CHECKED			SHEET 1 OF 3	
FILE LOCATION /home/dcc/docs/D970550.pdf		FINISH				

1 2 3 4 5 6 7 8

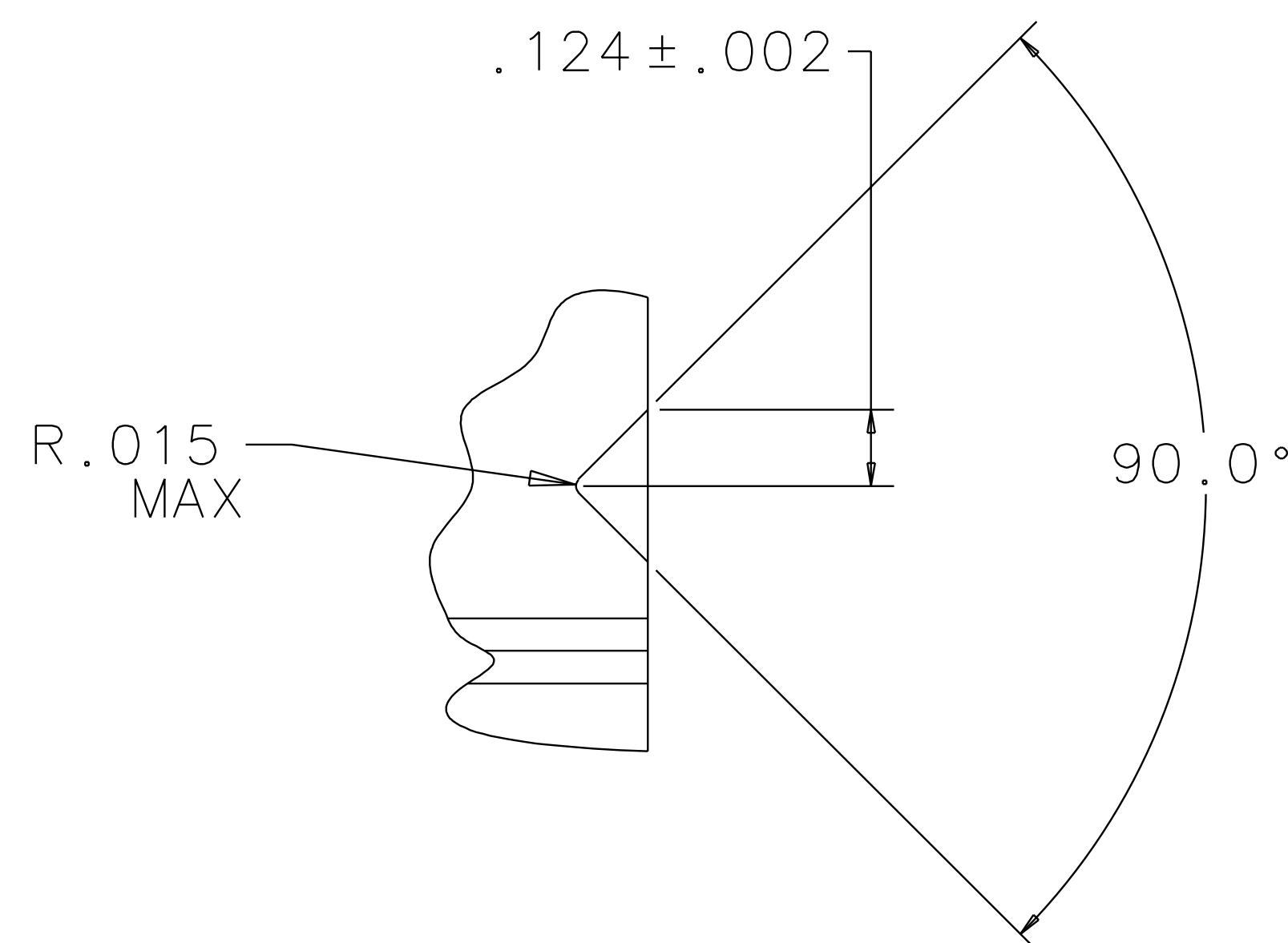
REV	DATE	DRAWN BY	CHECKED	DCC	DCN/DESCRIPTION
A	8-14-98	J. Romie			E980220/INITIAL RELEASE
B	9-22-98	J. Romie			E980249/ADD HOLES ON BASE
C	6-21-99	J. Romie			E990258/CHANGE DIMS. SH 2
D	2-9-01	J. Romie			E010028/SH2, 3.500 WAS 3.000



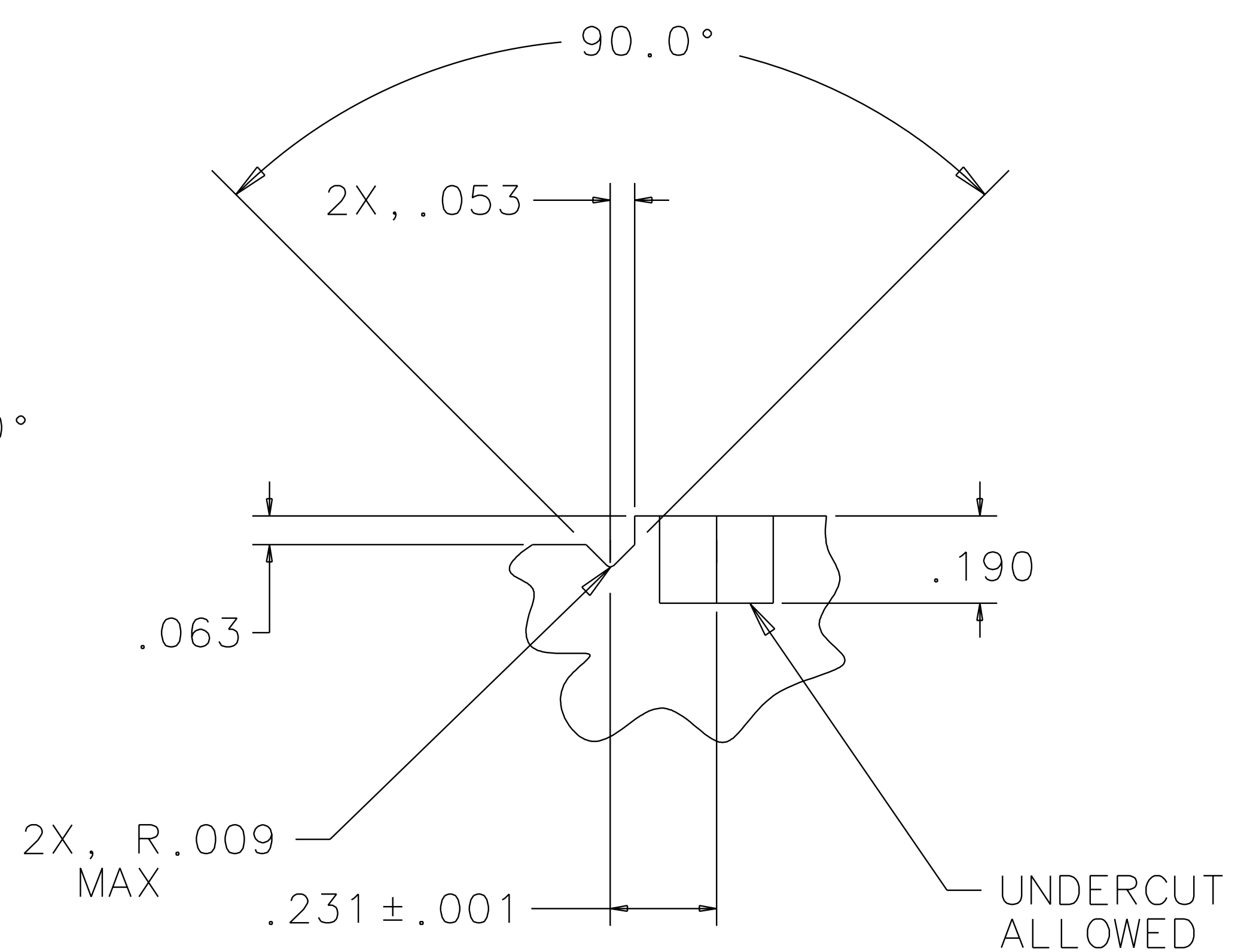
BASE PLATE
 MATERIAL: 6061-T6 ALUM

QTY REQ	PART OR IDENTIFYING NO	NOMENCLATURE OR DESCRIPTION	MATERIAL SPECIFICATION	ITEM NO.
PARTS LIST				
<small>UNLESS OTHERWISE SPECIFIED DIMENSIONS ARE IN INCHES TOLERANCES ARE: FRACTIONS DECIMALS ANGLES 0.XX±0.01 0.XXX±0.005 ANGLES±0.5°</small>				
APPROVALS		DATE	LIGO CALIFORNIA INSTITUTE OF TECHNOLOGY MASSACHUSETTS INSTITUTE OF TECHNOLOGY	
DRAWN J. Romie		8/98	TITLE GUIDE ROD FIXTURE, BEAMSPLITTER OPTICS	
CHECKED			SIZE E D970550	
MATERIAL			SCALE 1:1	
NEXT ASSEMBLY			REV D	
FILE LOCATION			SHEET 2 OF 3	

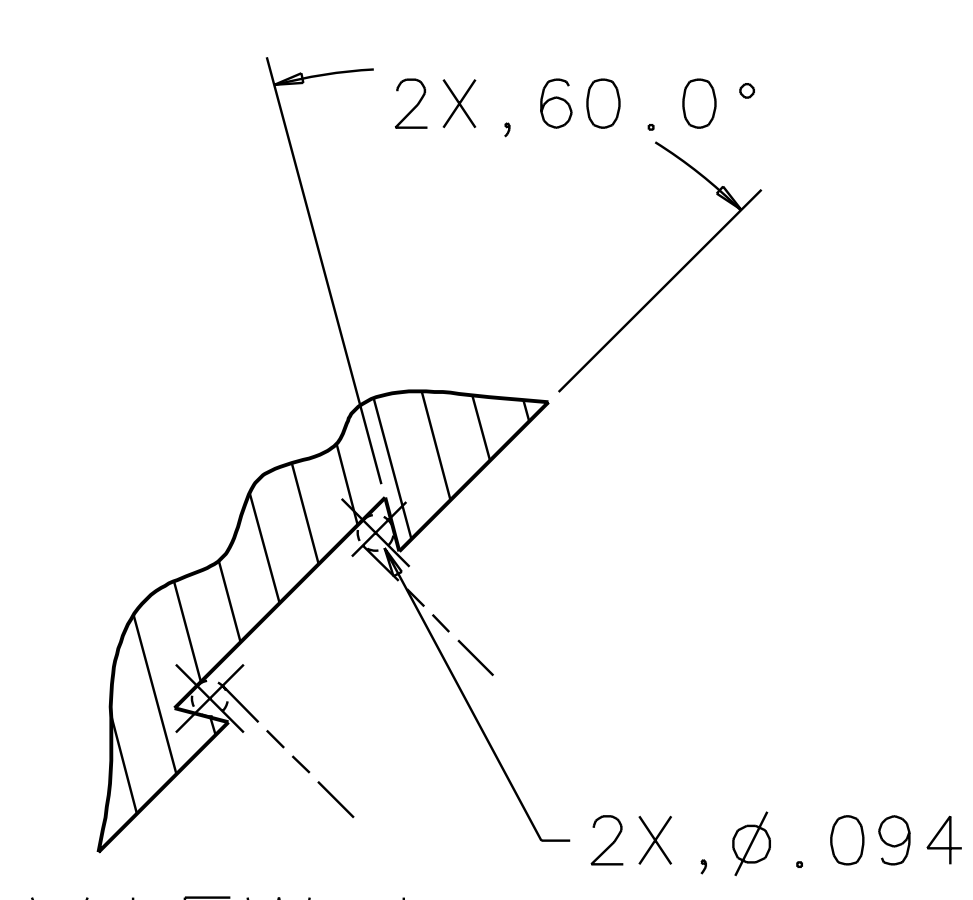
REV	DATE	DRAWN BY	CHECKED	DCC	DCN/DESCRIPTION
A	8-14-98	J. Romie			E980220/INITIAL RELEASE
B	9-22-98	J. Romie			E980249/ADD HOLES IN BASE
C	6-21-99	J. Romie			E990258/CHANGE DIMS., SH 2
D	2-9-01	J. Romie			E010028/SH2, 3,500 WAS 3,000



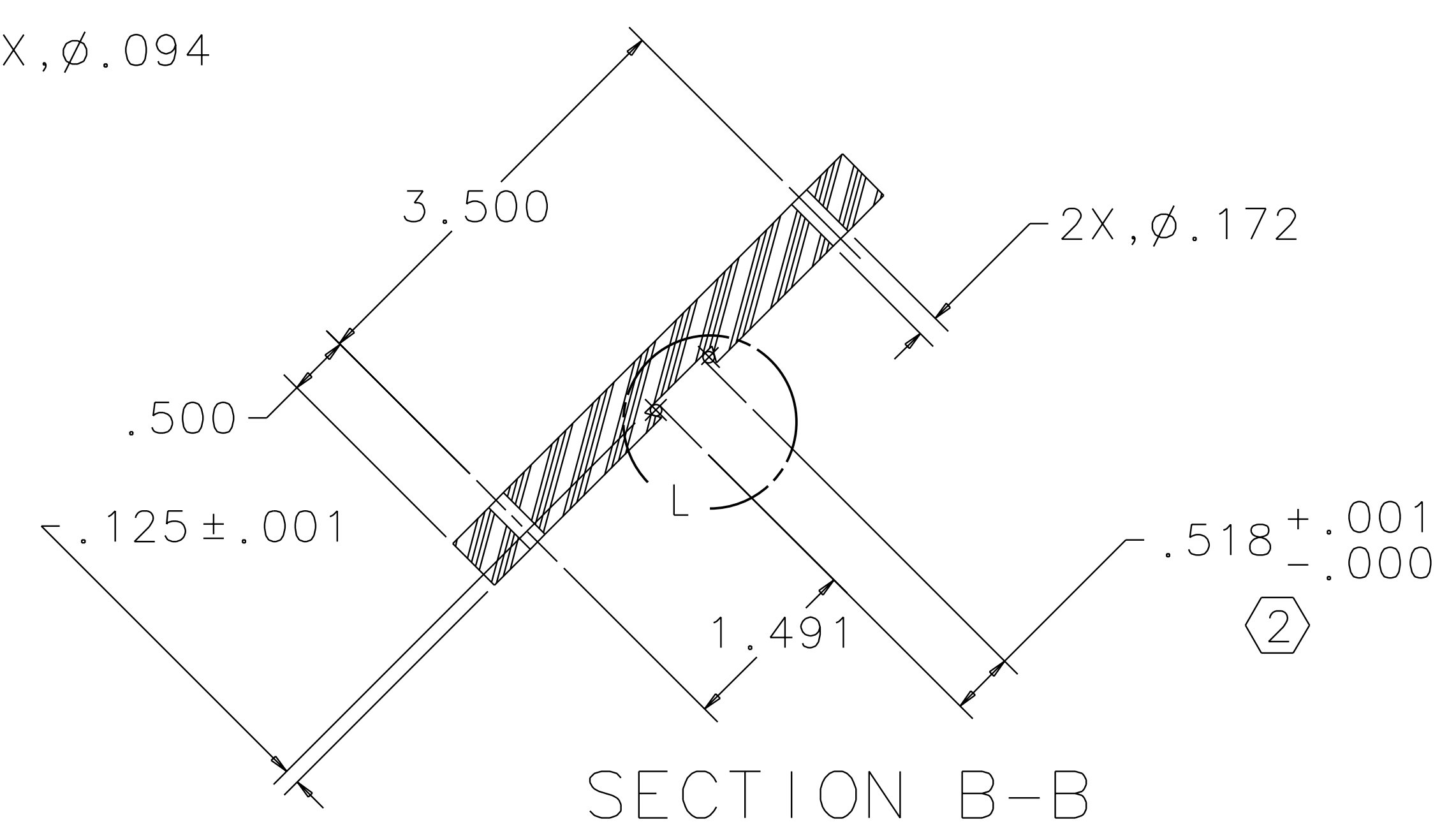
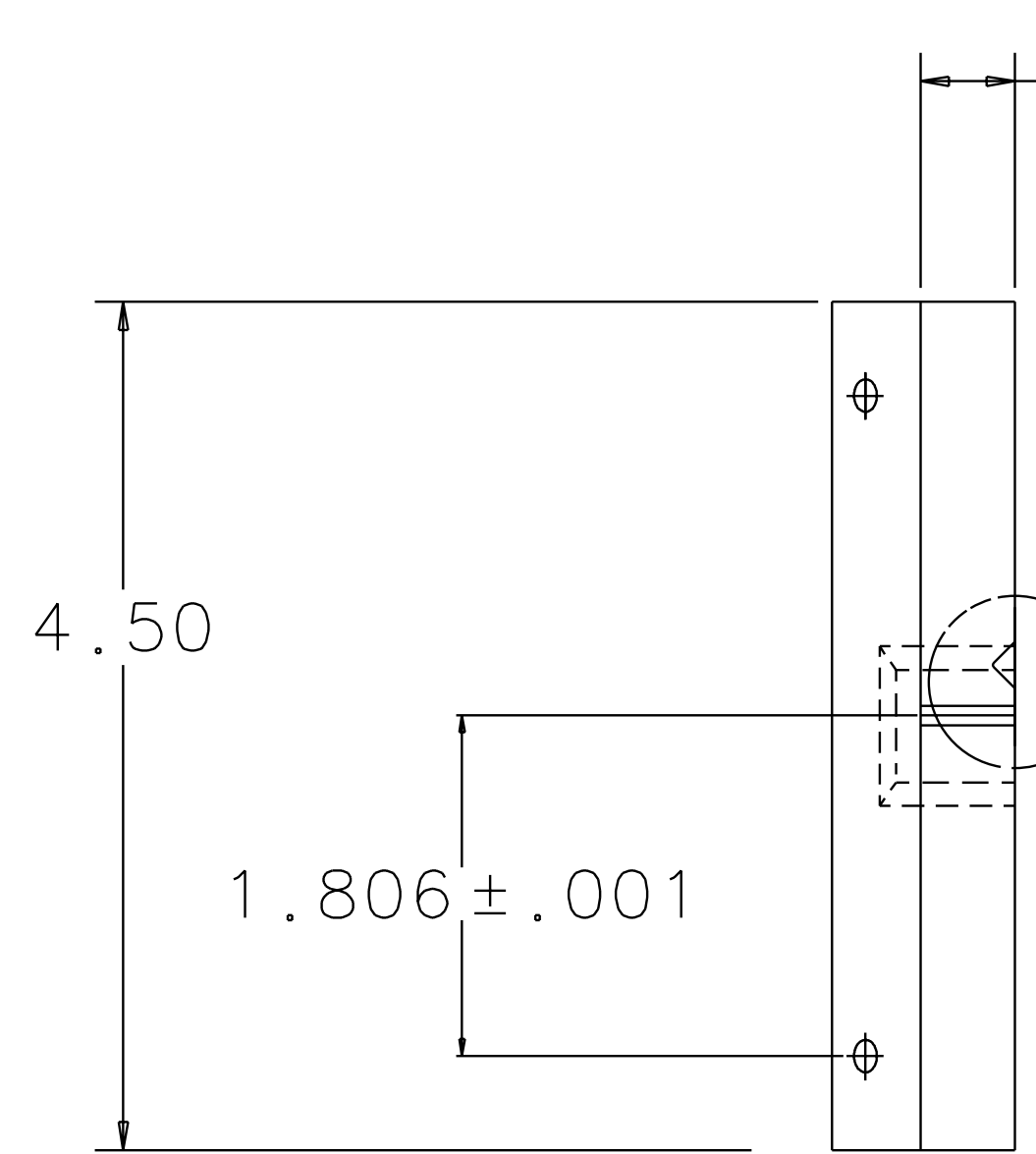
VIEW C
SCALE 4:1



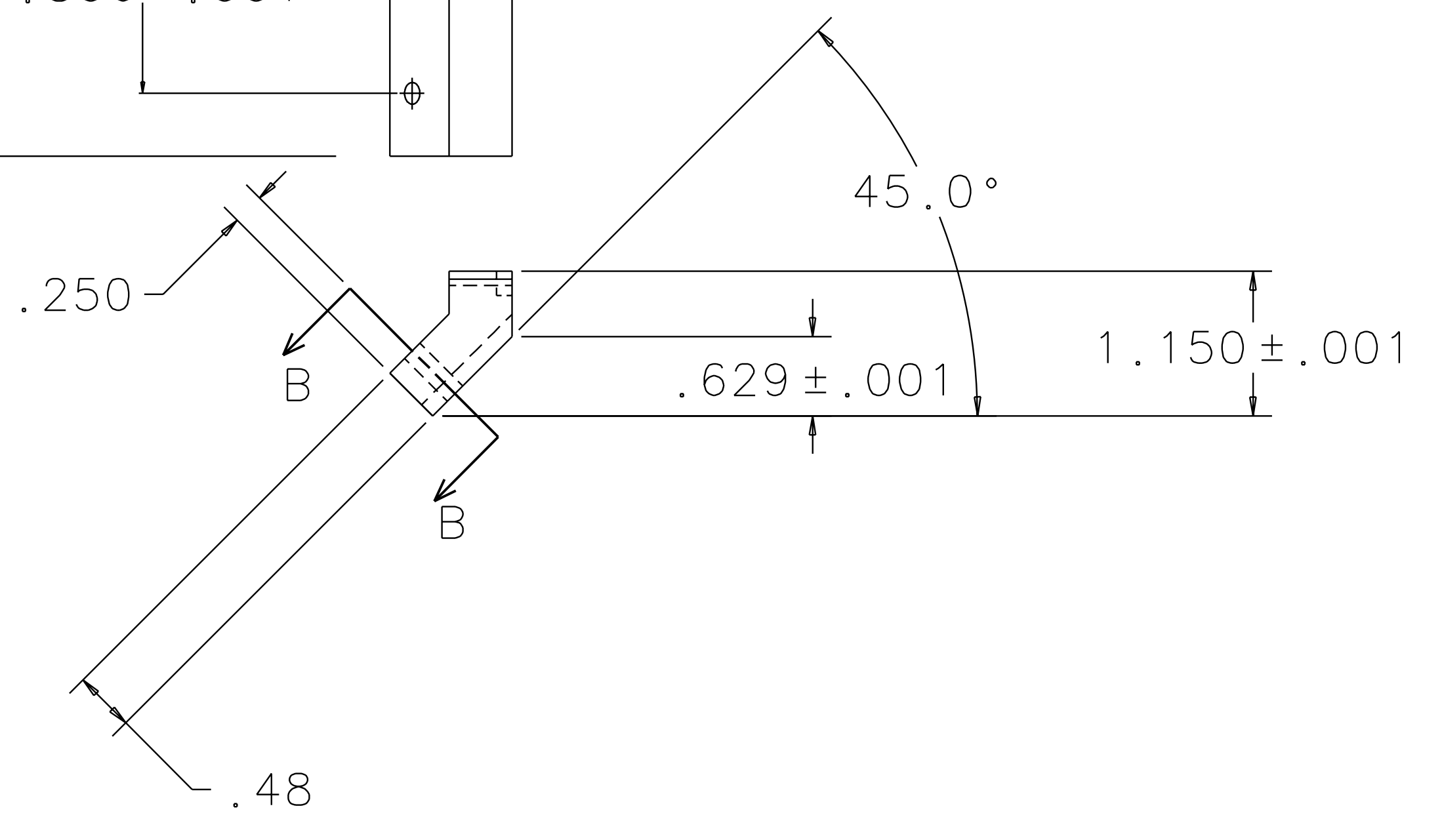
VIEW D
SCALE 4:1



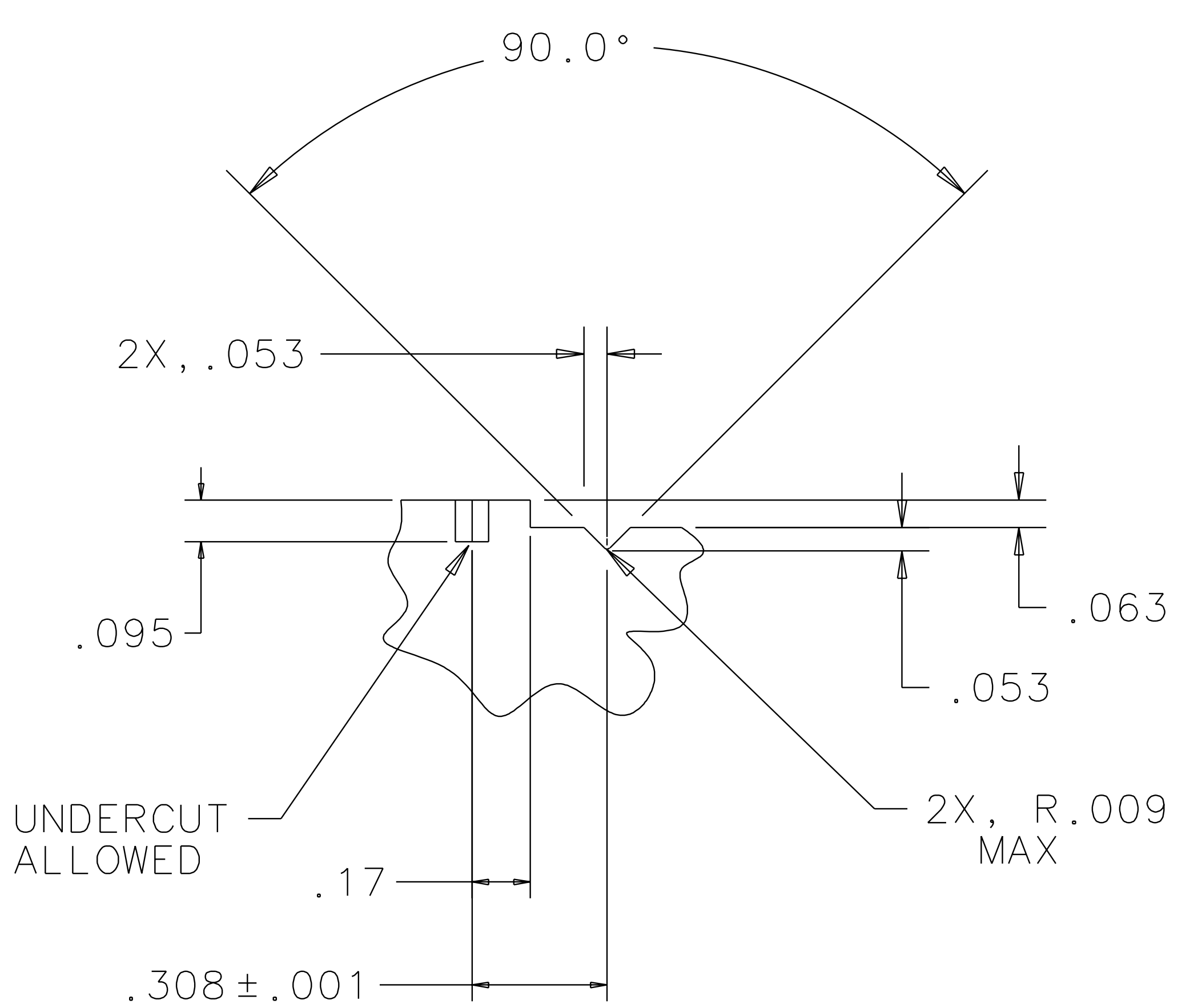
VIEW L
SCALE 2:1



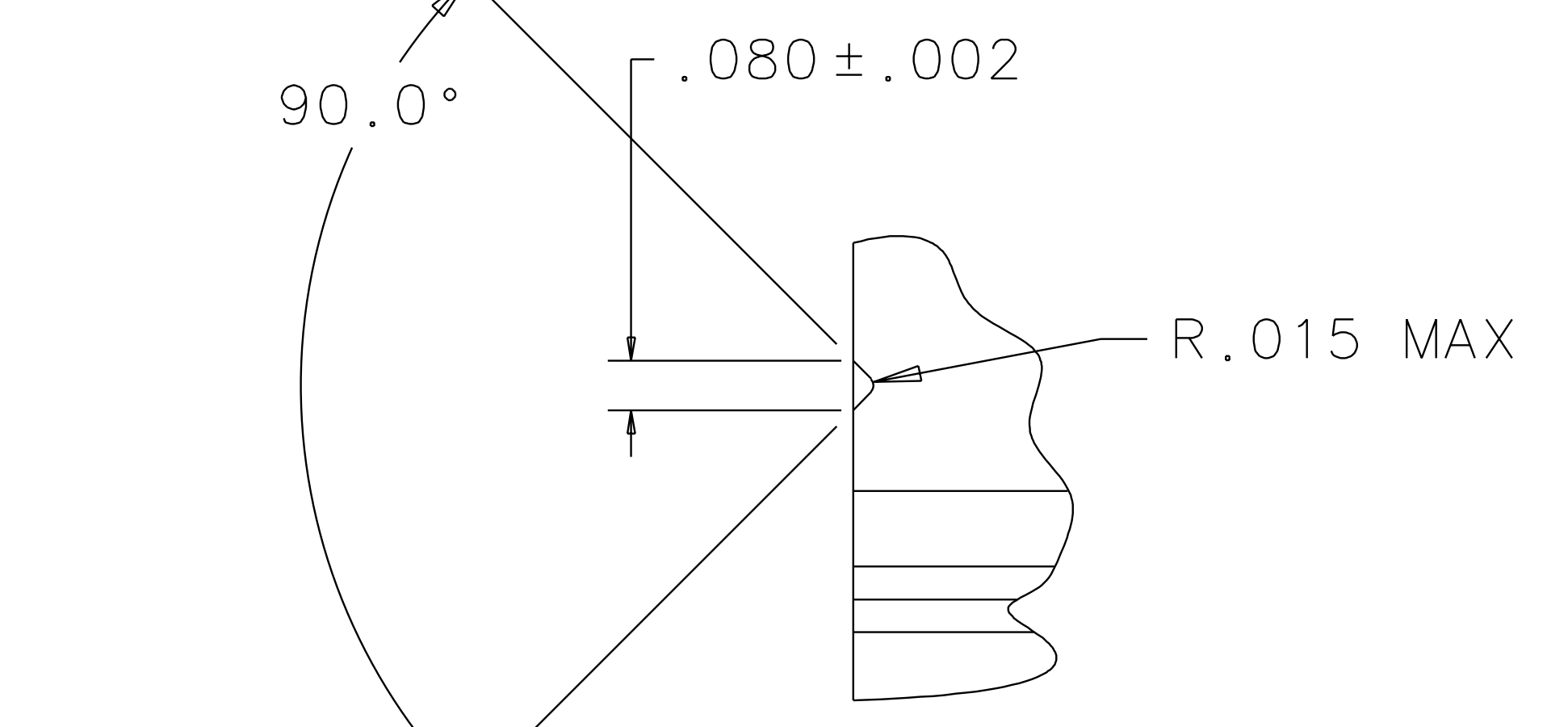
SECTION B-B



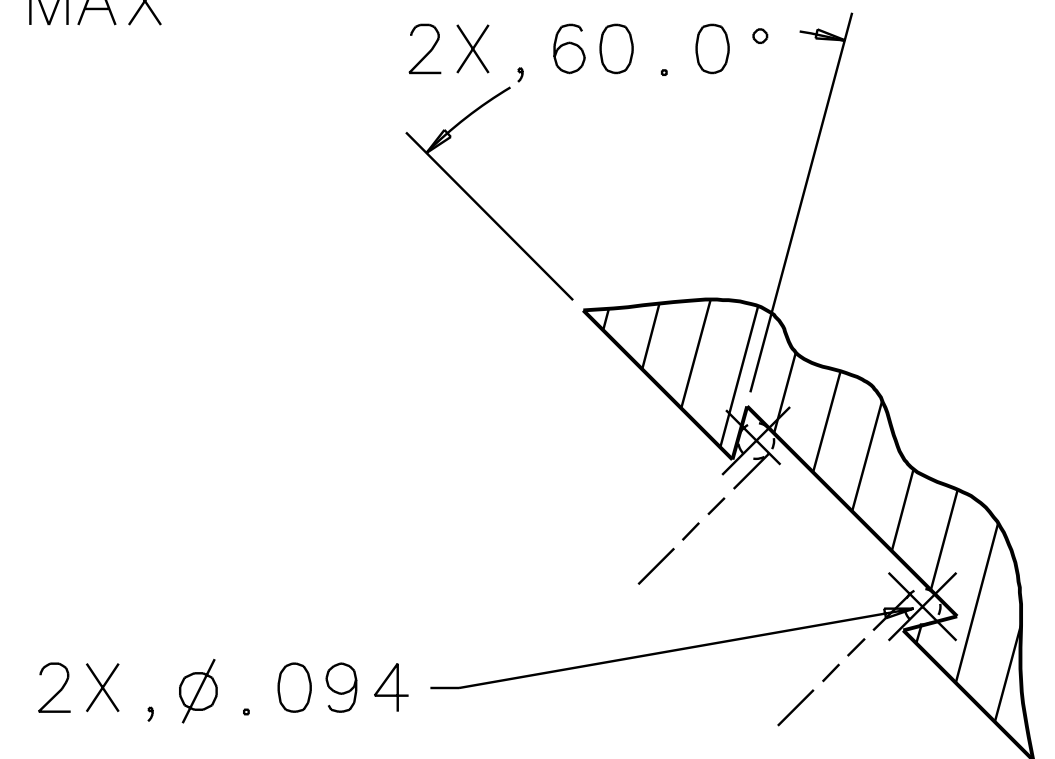
LEFT BLOCK, TOP
MATERIAL: TEFLON



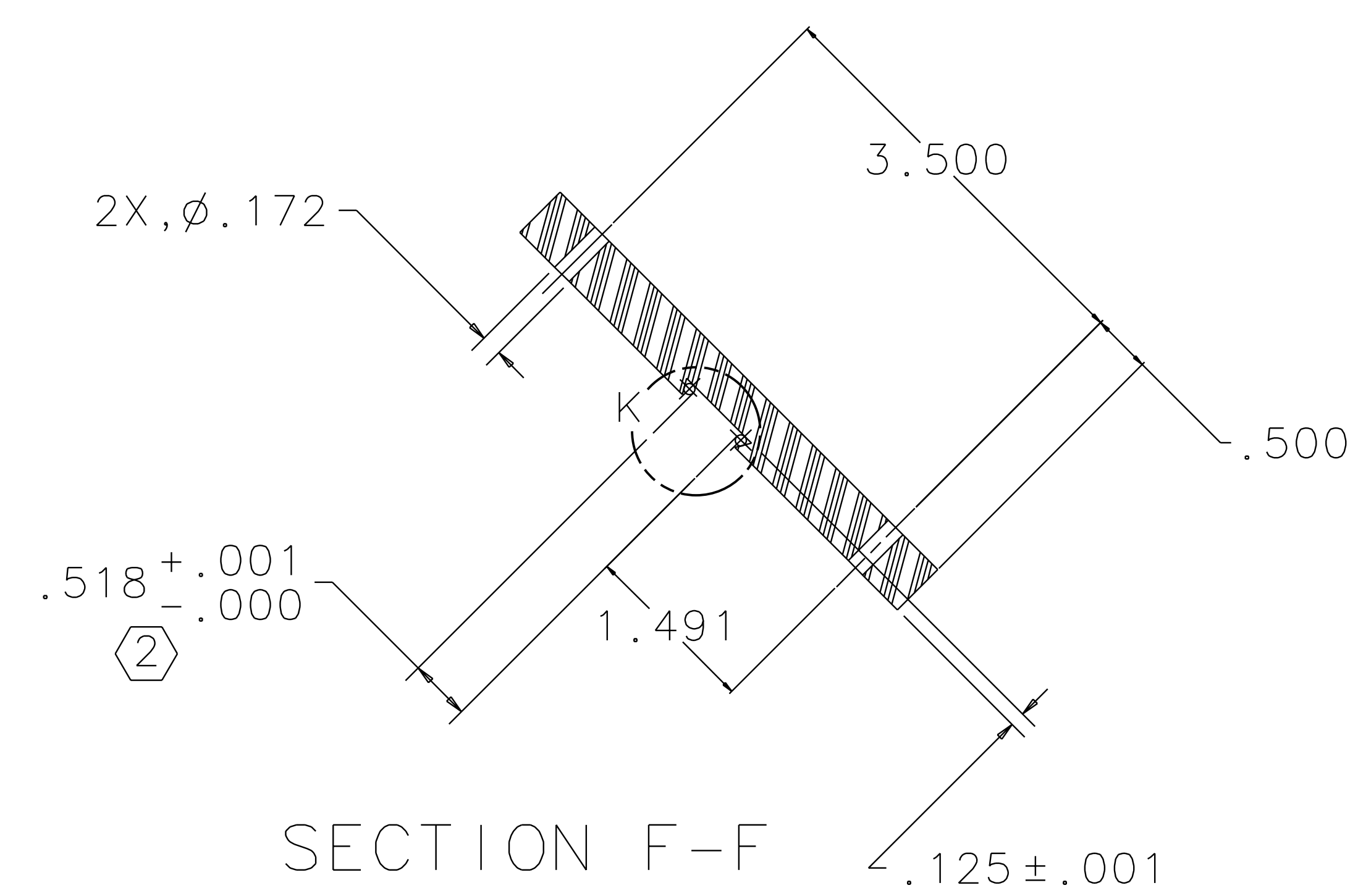
VIEW H
SCALE 4:1



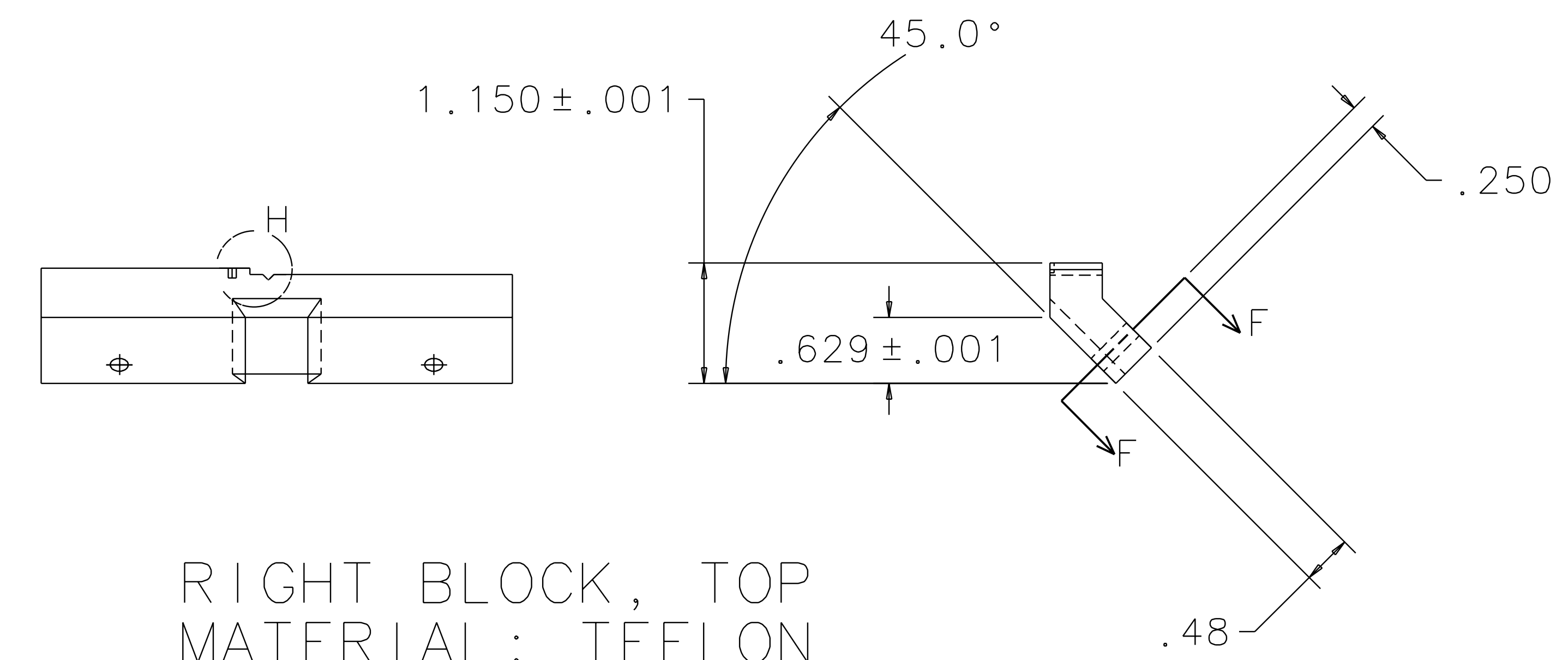
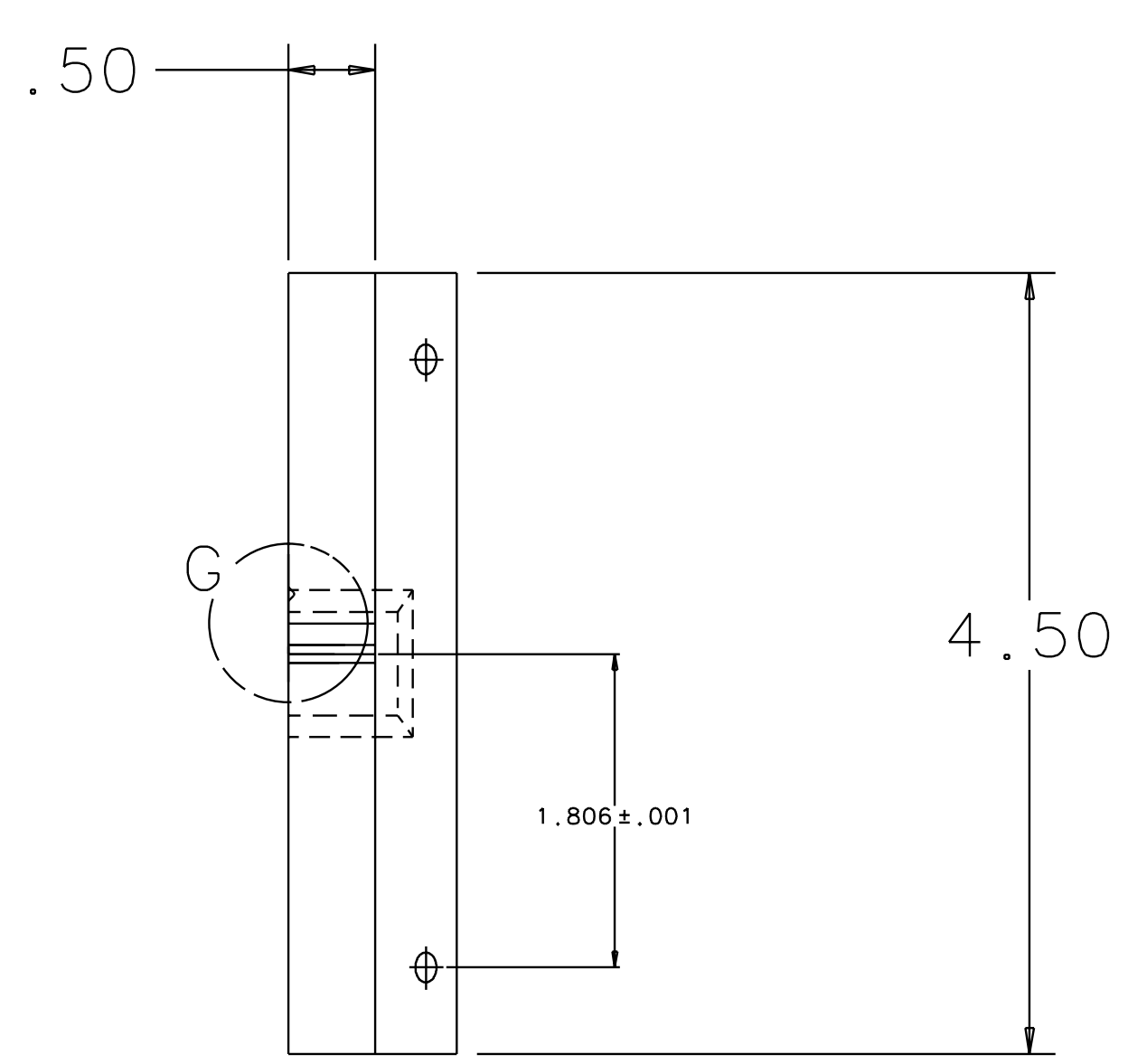
VIEW G
SCALE 4:1



VIEW K
SCALE 2:1



SECTION F-F



RIGHT BLOCK, TOP
MATERIAL: TEFLON

QTY REQ	PART OR IDENTIFYING NO	NOMENCLATURE OR DESCRIPTION	MATERIAL SPECIFICATION	ITEM NO.
		APPROVALS	DATE	
		DRAWN	8/98	
		CHECKED		
		LIGO CALIFORNIA INSTITUTE OF TECHNOLOGY MASSACHUSETTS INSTITUTE OF TECHNOLOGY		
		TITLE GUIDE ROD FIXTURE, BEAMSPLITTER OPTICS		
		SIZE E D970550		
		SCALE 1:1		
		SHEET 3 OF 3		