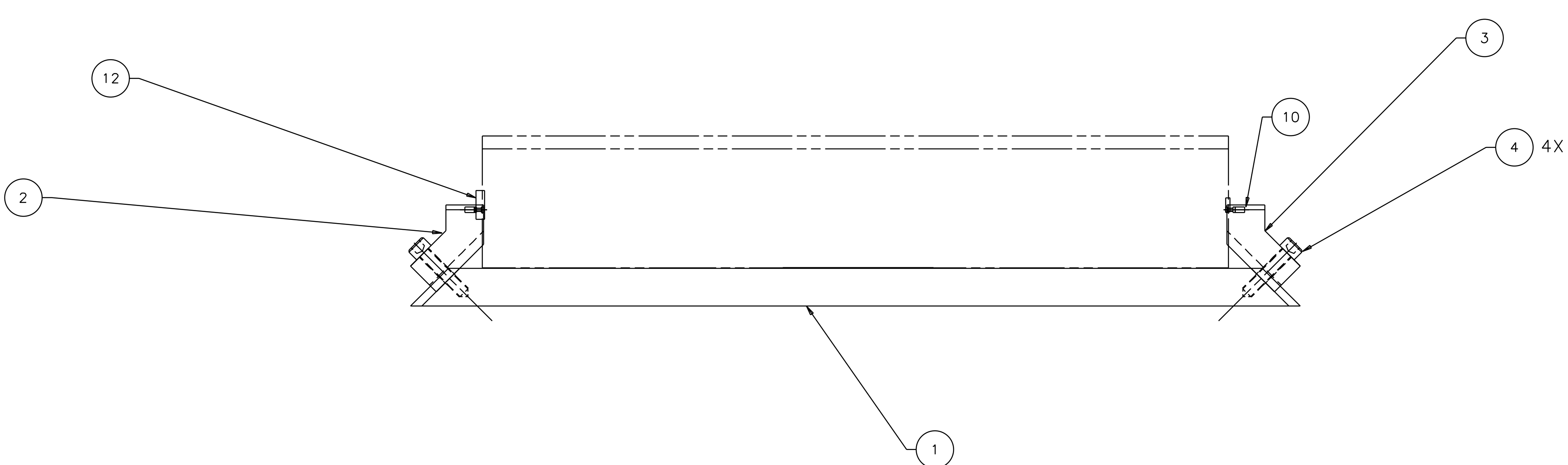
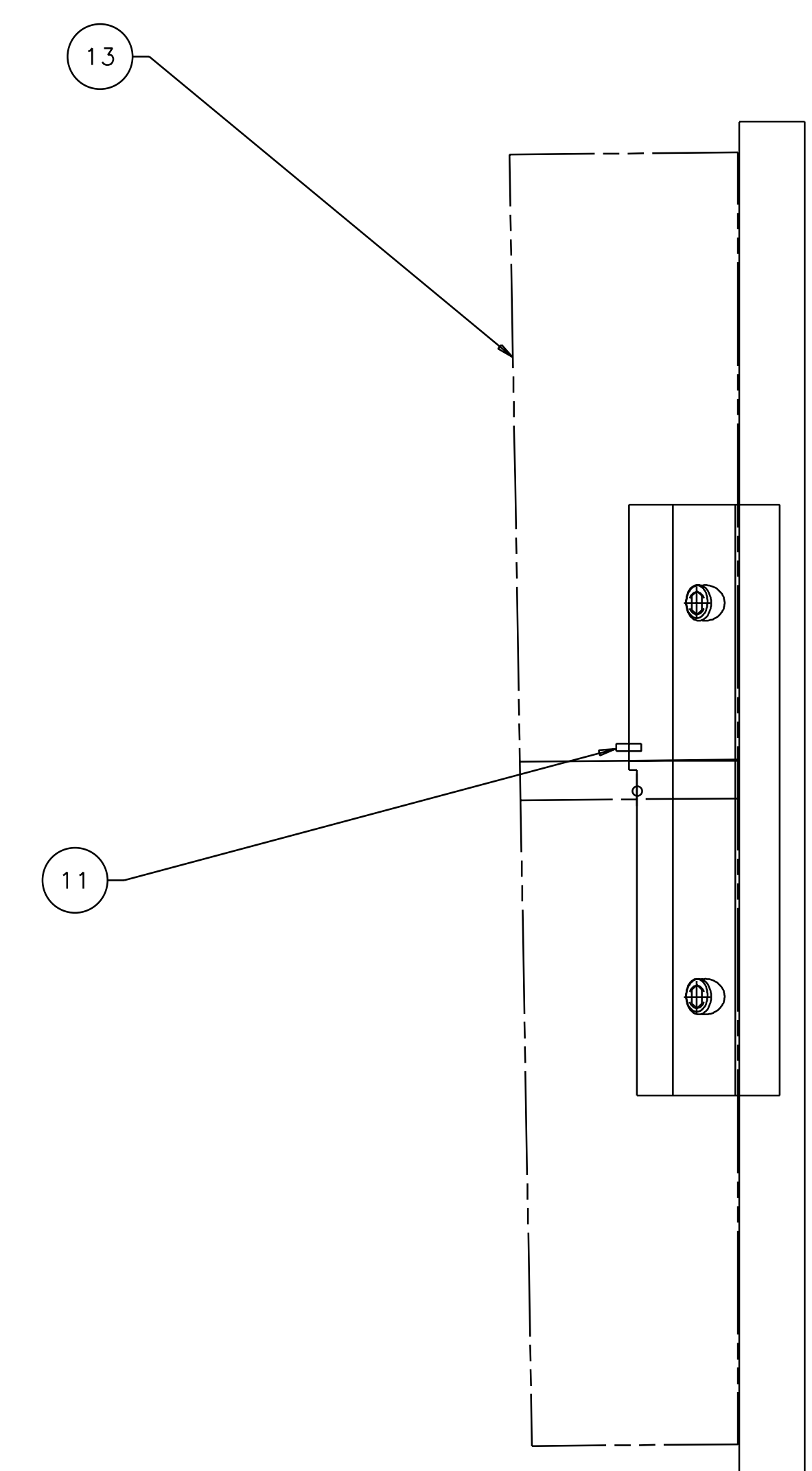
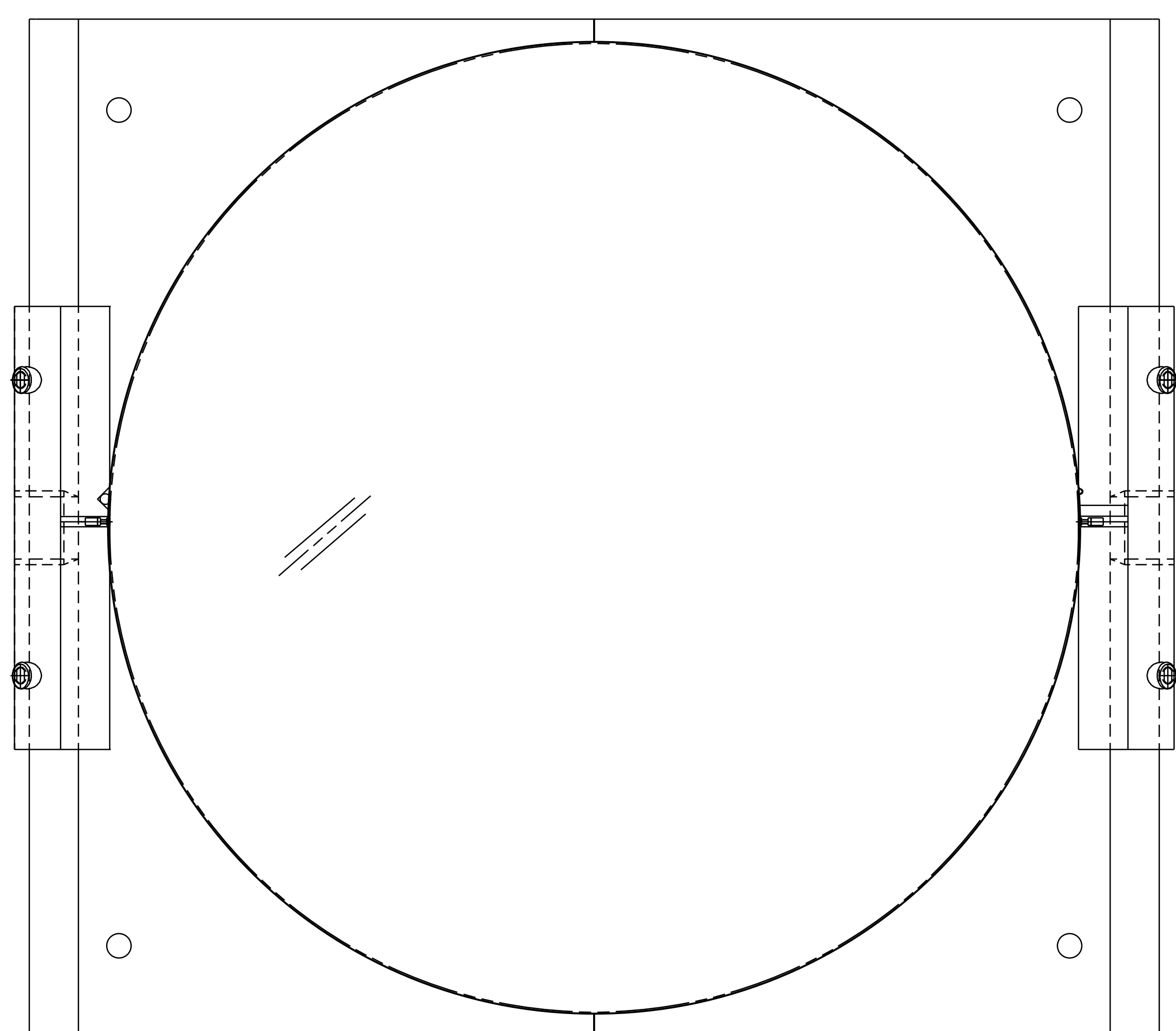


NOTES: (UNLESS OTHERWISE SPECIFIED)

1. THIS FIXTURE IS TO BE USED WITH AN OPTIC THAT IS  $\phi 9.84"$  X  $1.575"$  THICK ( $\phi 25\text{cm}$  X  $4\text{cm}$  THICK) WITH A 1 DEGREE, THICK-SIDE-UP ORIENTED WEDGE.
2. CLOSE SLIP FIT.
3. THE RIGHT BLOCK, TOP IS USED TO MOUNT THE GUIDE ROD AND THE LEFT BLOCK, TOP IS USED TO MOUNT THE WIRE STANDOFF.
4. USE OF THIS FIXTURE IS COVERED IN LIGO-E970154.
5. SPECIFICATIONS COVERING THE FABRICATION OF THIS ASSEMBLY ARE DETAILED IN LIGO-E970155, THE LARGE OPTIC SUSPENSION (LOS) FIXTURES AND COMPONENTS FABRICATION SPECIFICATION.

REV	DATE	DRAWN BY	CHECKED	DCC	DCN/DESCRIPTION
A	8-14-98	J. Romie			E980220/INITIAL RELEASE
B	9-22-98	J. Romie			E980249/ADD HOLES IN BASE

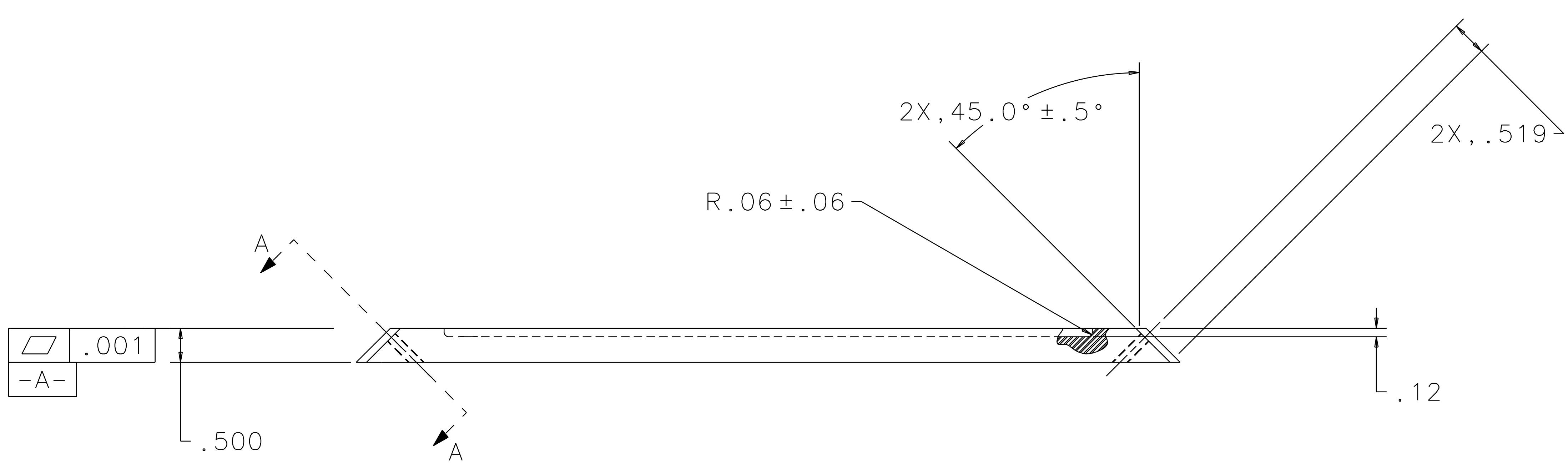
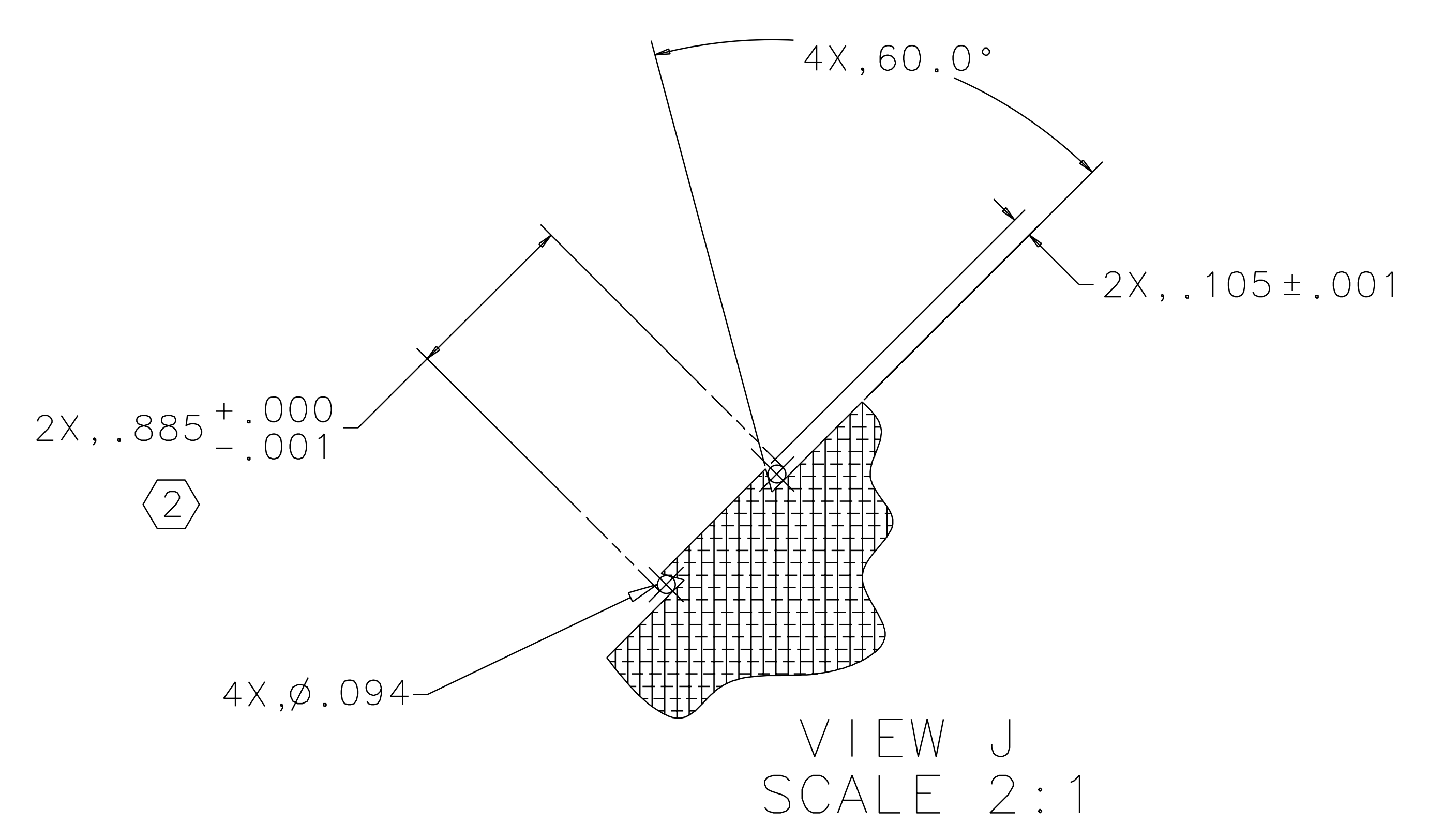
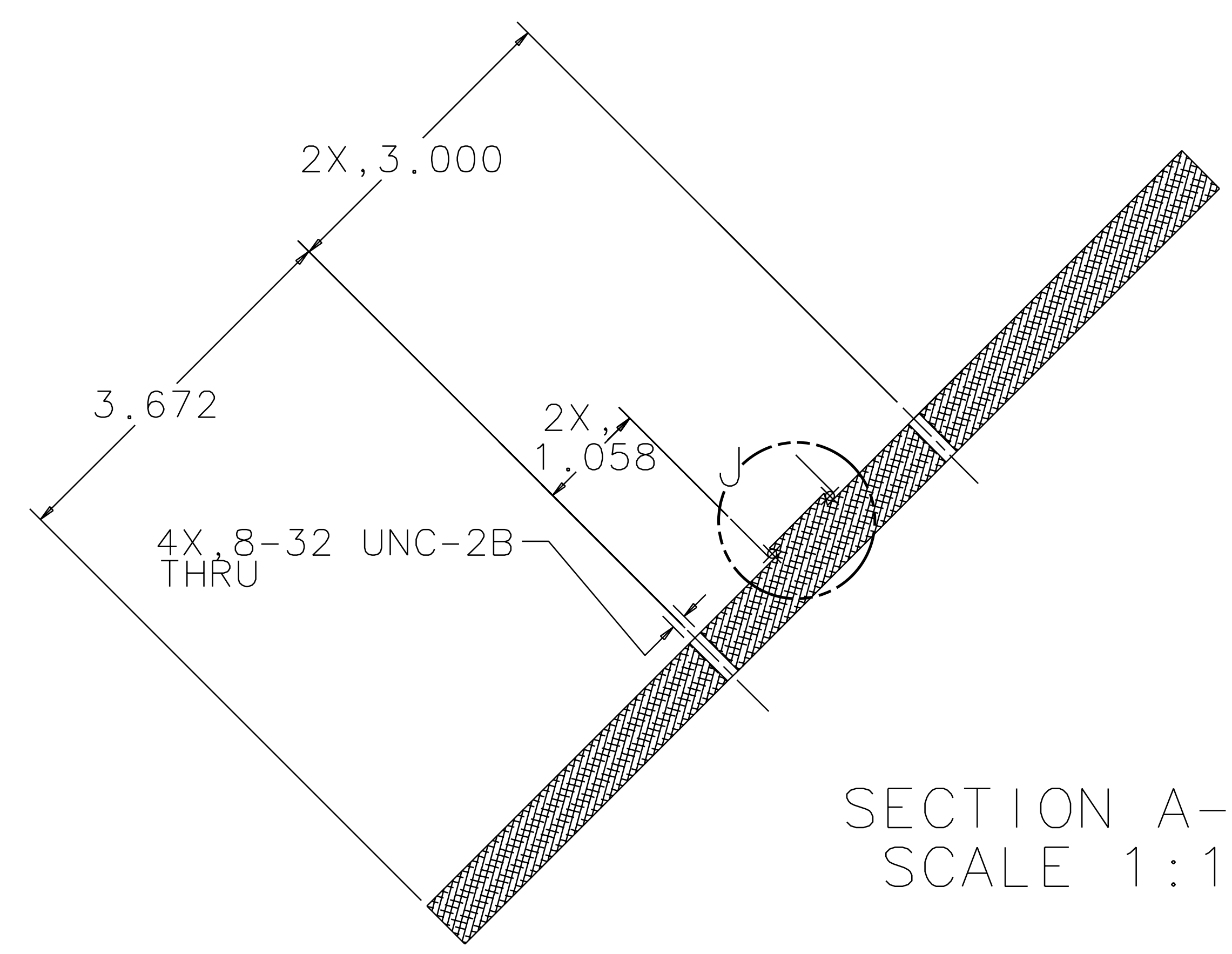
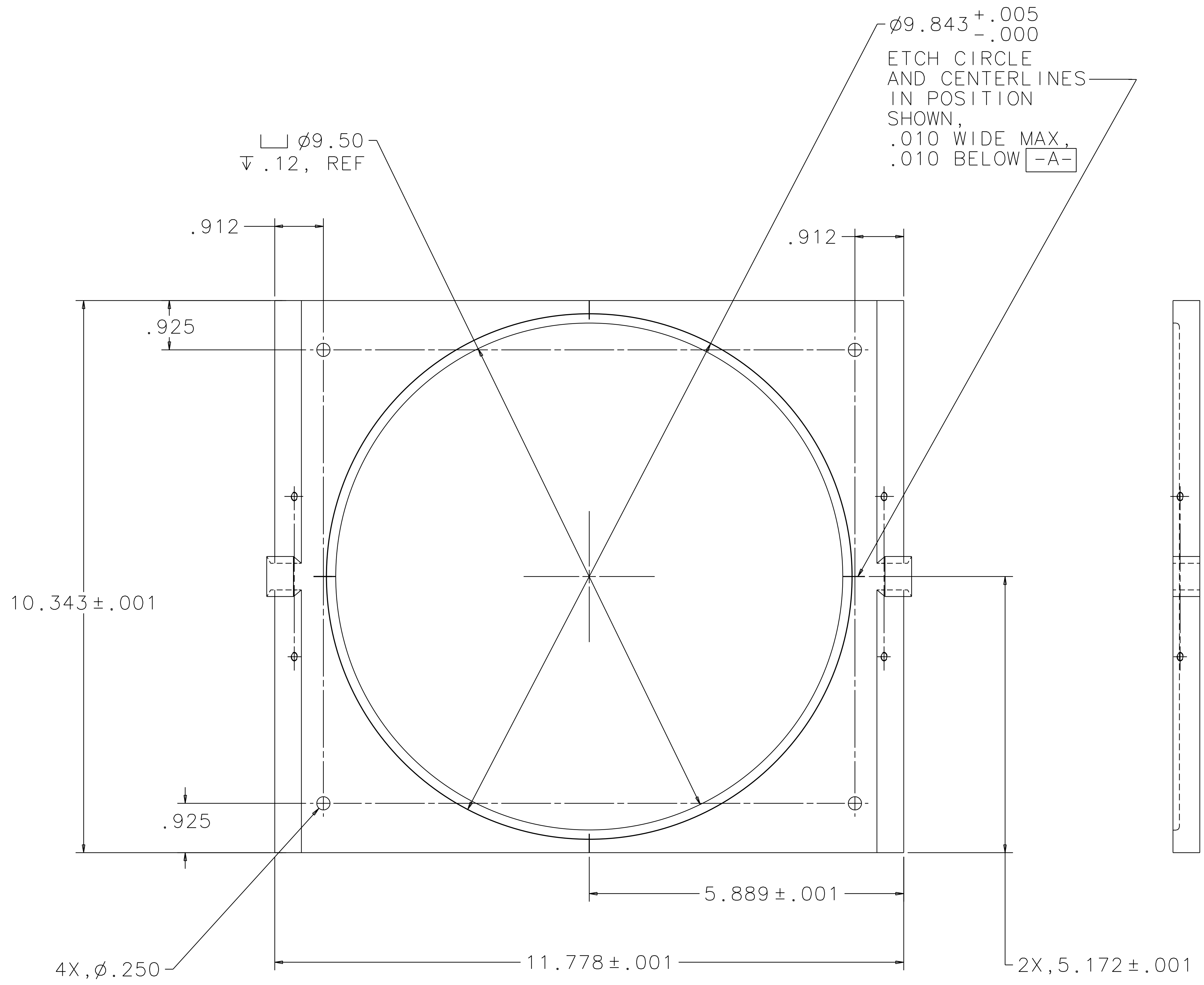


REF	QTY	PART OR IDENTIFYING NO	NOMENCLATURE OR DESCRIPTION	MATERIAL SPECIFICATION	ITEM NO
			OPTIC		13
			WIRE STANDOFF		12
			GUIDE ROD		11
			MAGNET/STANDOFF ASSEMBLY		10
					9
					8
					7
					6
					5
4			SCREW_SHCS_#8-32 x .75	STAINLESS STEEL	4
1			RIGHT BLOCK, TOP		3
1			LEFT BLOCK, TOP		2
1			BASE PLATE		1

APPROVALS		DATE	TITLE	
DRAWN	J. Romie	8/98	LIGO CALIFORNIA INSTITUTE OF TECHNOLOGY MASSACHUSETTS INSTITUTE OF TECHNOLOGY	
CHECKED			GUIDE ROD FIXTURE, BEAMSPLITTER OPTICS A	

NEXT ASSEMBLY	D970505, D970539	SCALE	1/1	SHEET	1 OF 3
FILE LOCATION	/home/dcc/docs/D970550.pdf	FINISH		REV	B
		SIZE	E	D970550	

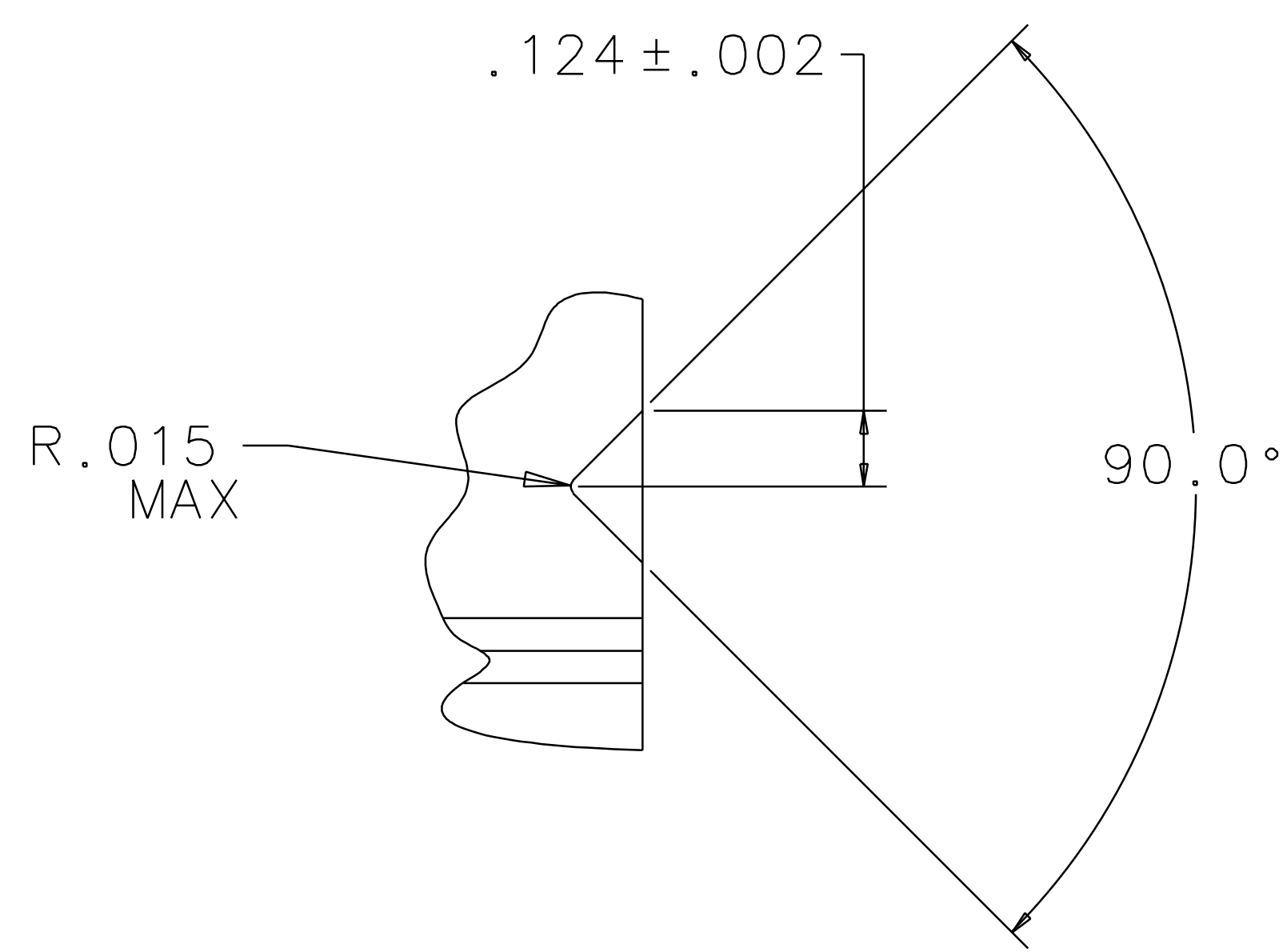
REV	DATE	DRAWN BY	CHECKED	DCC	DCN/DESCRIPTION
A	8-14-98	J. Romie			E980220/INITIAL RELEASE
B	9-22-98	J. Romie			E980249/ADD HOLES ON BASE



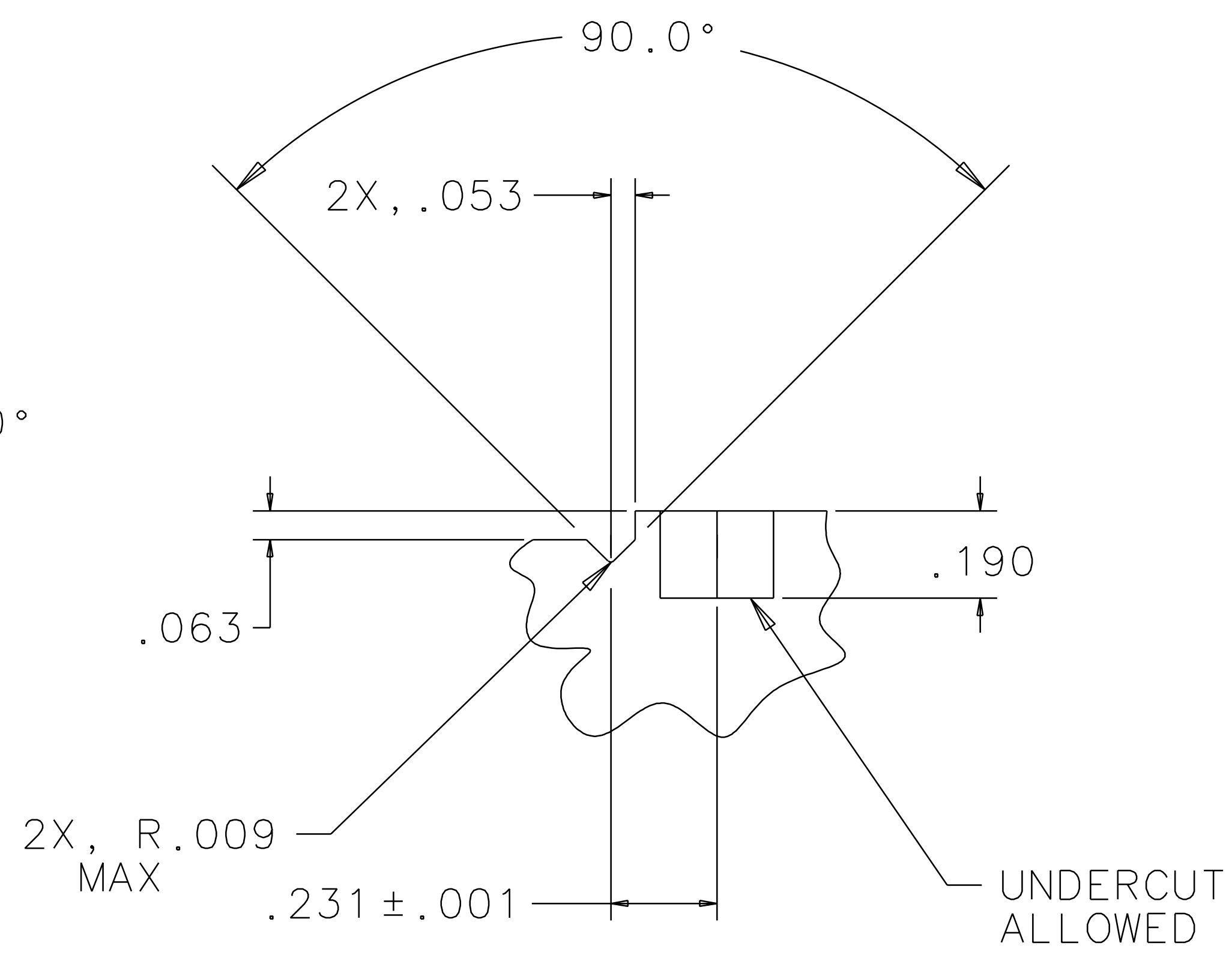
BASE PLATE  
MATERIAL: 6061-T6 ALUM

QTY REQ	PART OR IDENTIFYING NO	NOMENCLATURE OR DESCRIPTION	MATERIAL SPECIFICATION	ITEM NO.
UNLESS OTHERWISE SPECIFIED DIMENSIONS ARE IN INCHES TOLERANCES ARE: FRACTIONS    DECIMALS    ANGLES 0.XX $\pm$ 0.01 0.XXX $\pm$ 0.005 ANGLES $\pm$ 0.5° DO NOT SCALE DRAWING				
APPROVALS		DATE	LIGO CALIFORNIA INSTITUTE OF TECHNOLOGY MASSACHUSETTS INSTITUTE OF TECHNOLOGY	
DRAWN J. Romie		8/98	TITLE GUIDE ROD FIXTURE, BEAMSPLITTER OPTICS	
CHECKED			SIZE E D970550	
MATERIAL			SCALE 1/1	
FINISH			SHEET 2 OF 3	

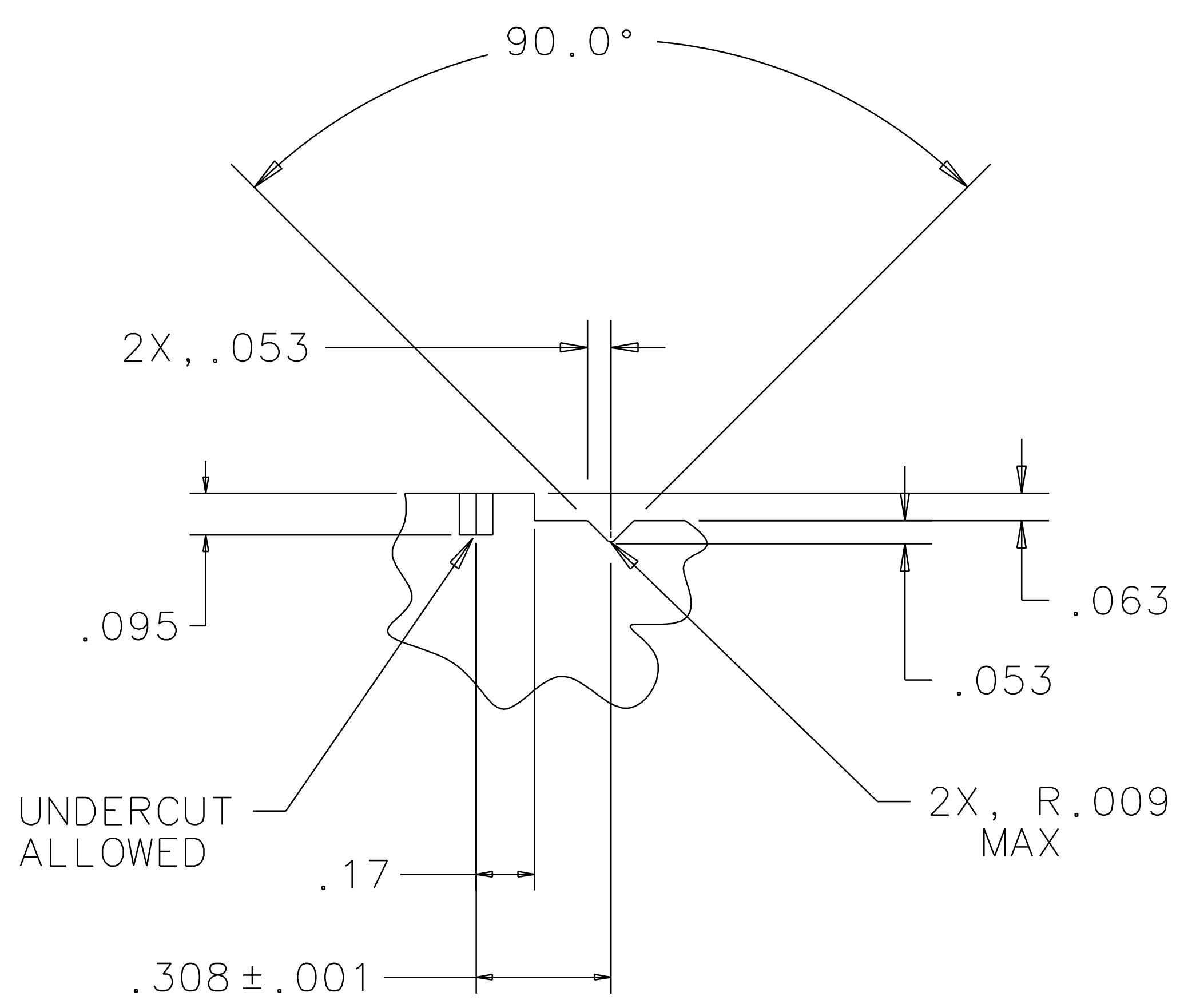
REV	DATE	DRAWN BY	CHECKED	DCC	DCN/DESCRIPTION
A	8-14-98	J. Romie			E980220/INITIAL RELEASE
B	9-22-98	J. Romie			E980249/ADD HOLES IN BASE



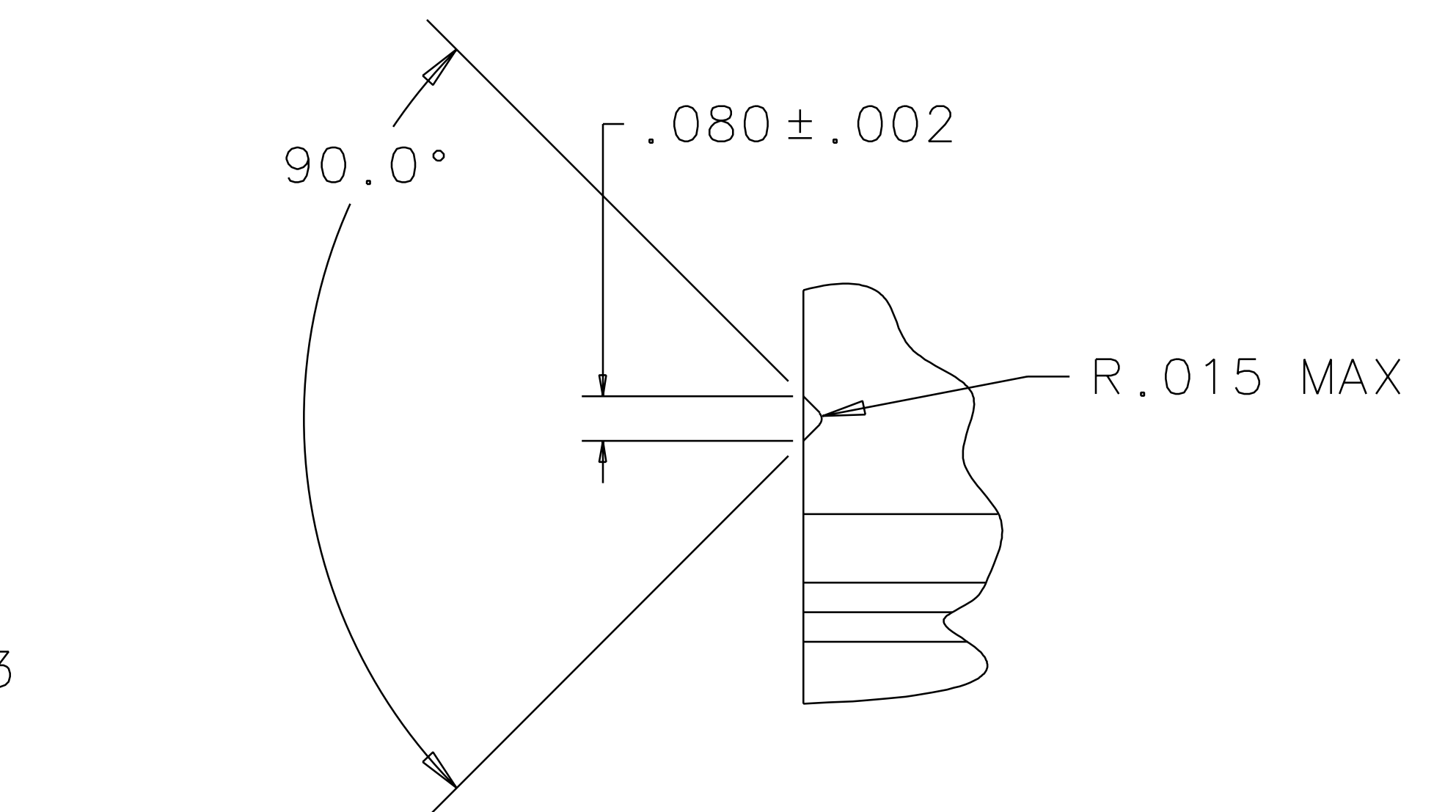
VIEW C  
SCALE 4:1



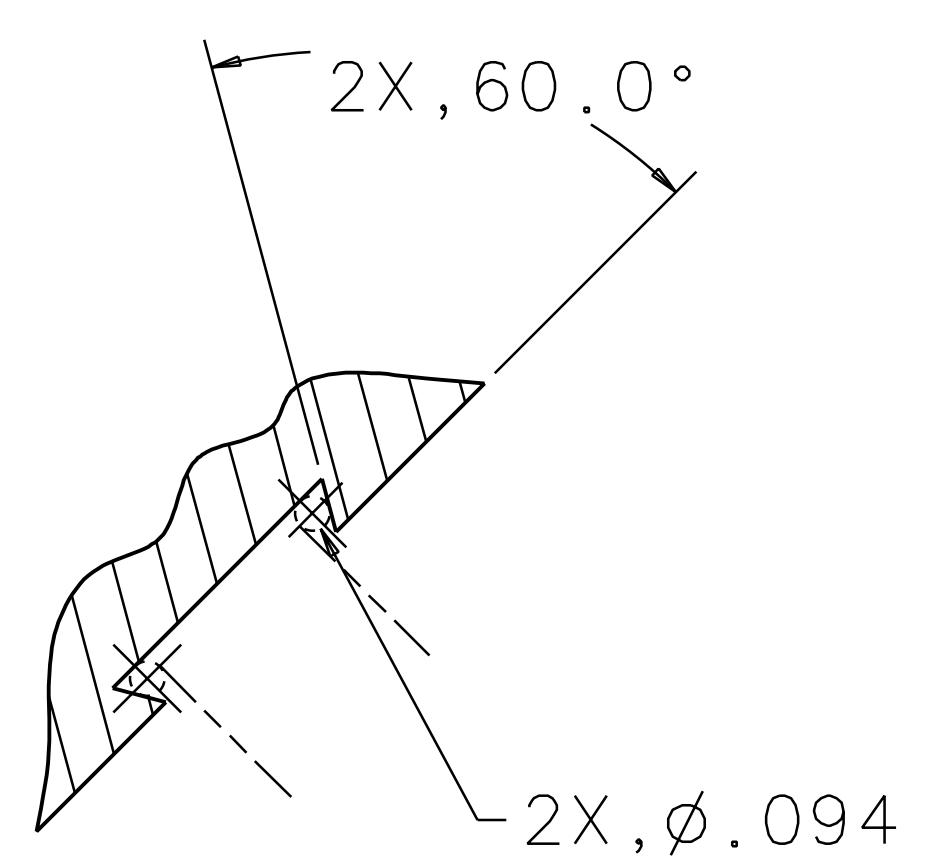
VIEW D  
SCALE 4:1



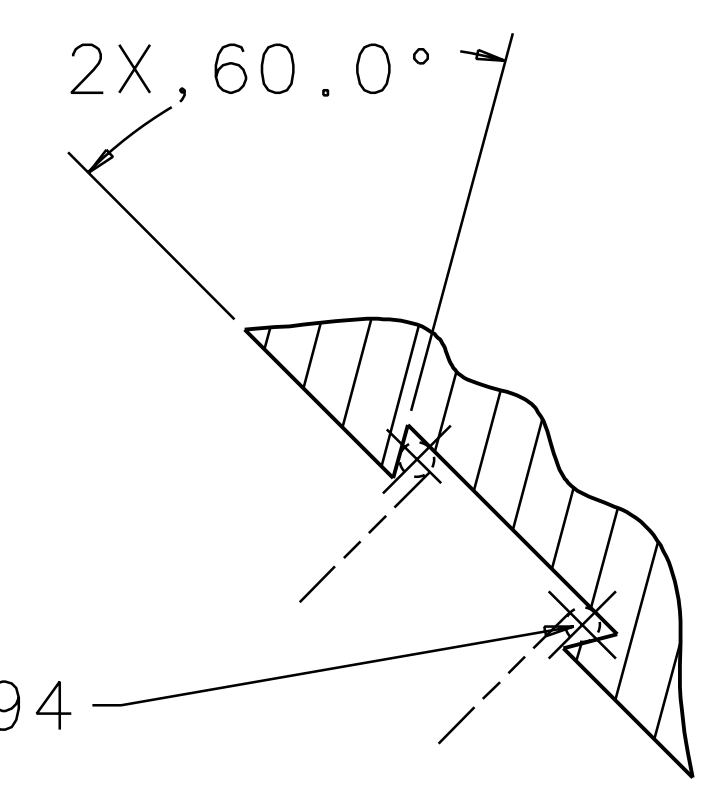
VIEW H  
SCALE 4:1



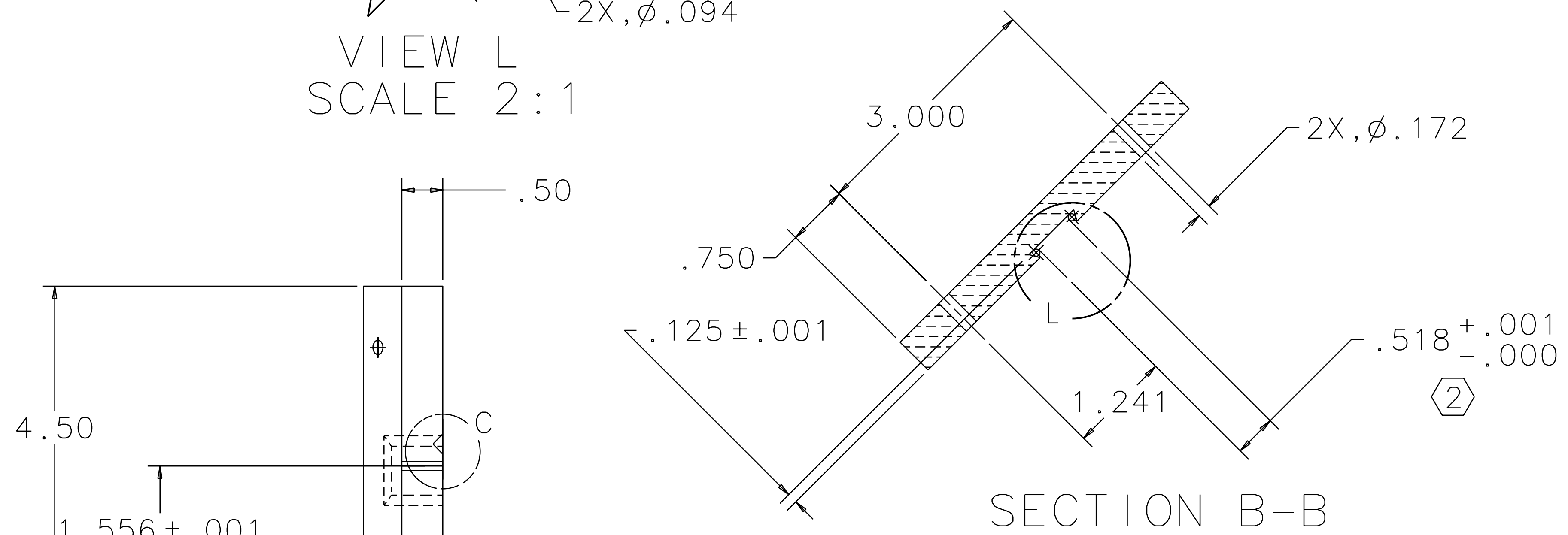
VIEW G  
SCALE 4:1



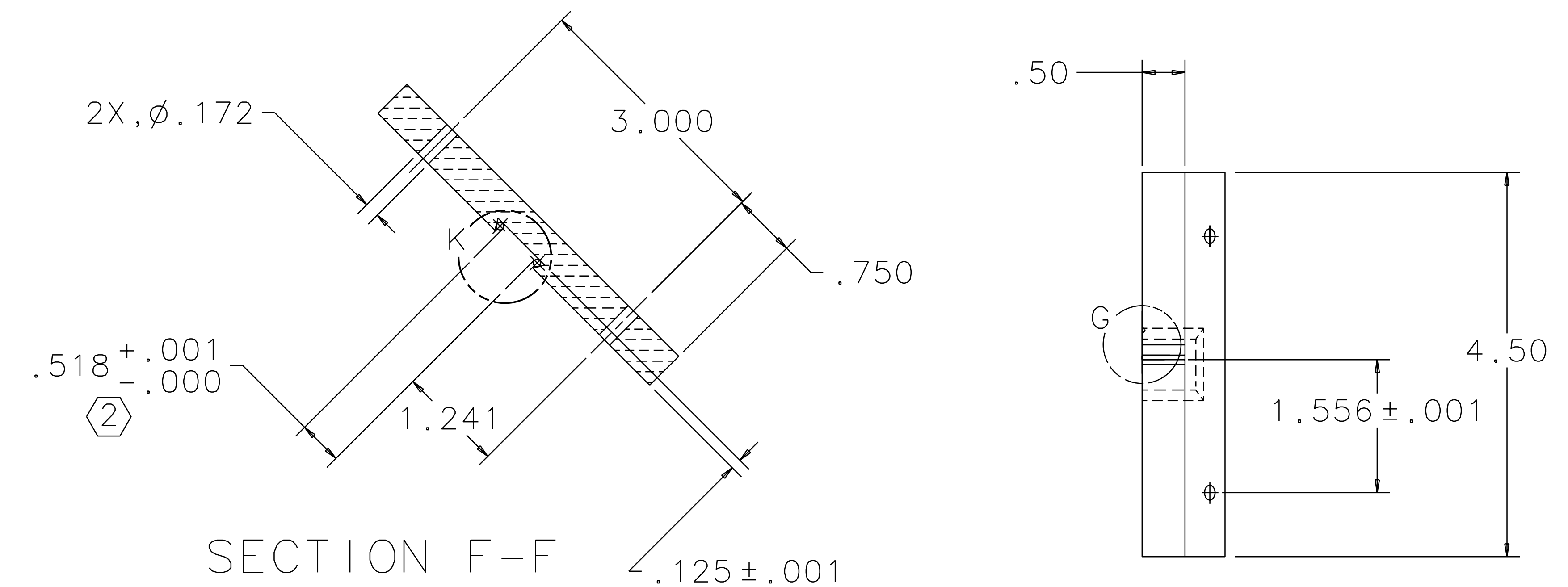
VIEW L  
SCALE 2:1



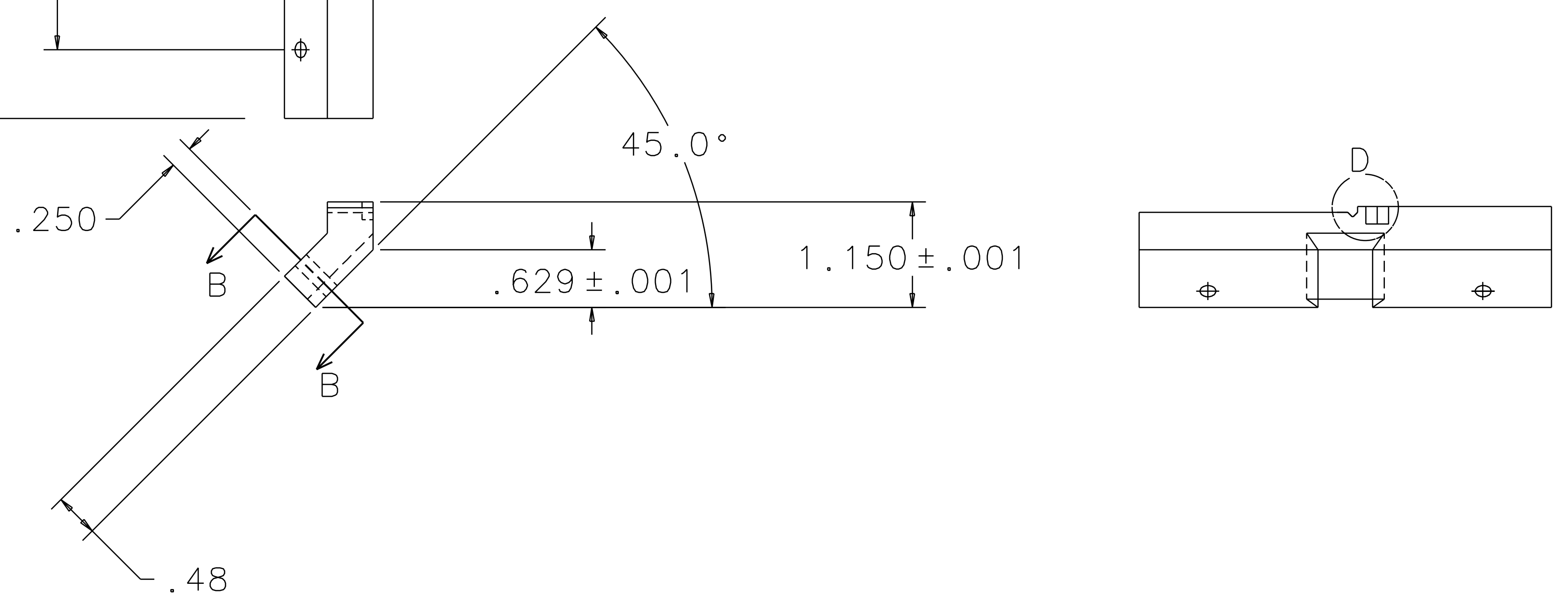
VIEW K  
SCALE 2:1



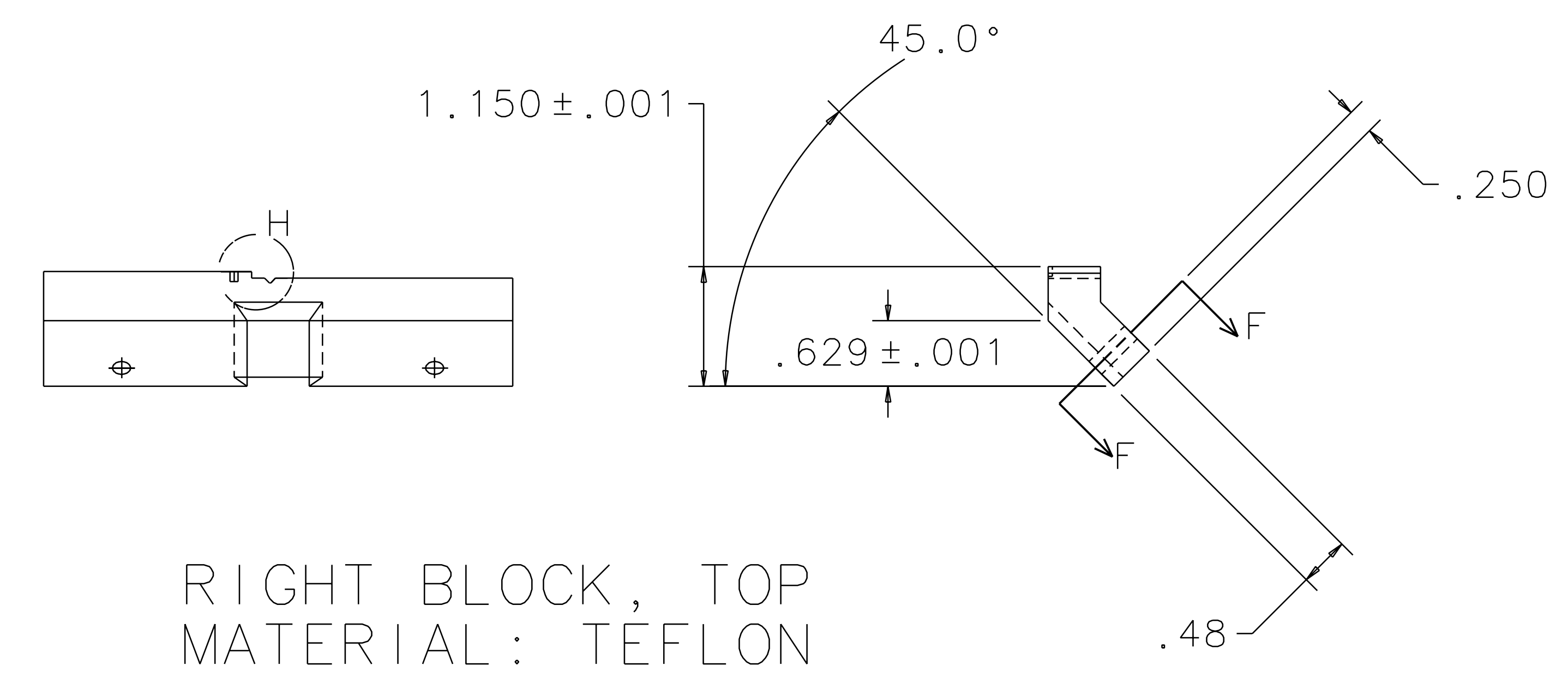
SECTION B-B



SECTION F-F



LEFT BLOCK, TOP  
MATERIAL: TEFLON



RIGHT BLOCK, TOP  
MATERIAL: TEFLON

QTY REQ	PART OR IDENTIFYING NO	NOMENCLATURE OR DESCRIPTION	MATERIAL SPECIFICATION	ITEM NO.
		LIGO CALIFORNIA INSTITUTE OF TECHNOLOGY MASSACHUSETTS INSTITUTE OF TECHNOLOGY		
UNLESS OTHERWISE SPECIFIED DIMENSIONS ARE IN INCHES TOLERANCES ARE: FRACTIONS DECIMALS ANGLES		APPROVALS	DATE	TITLE
0. XX ± 0.01 0. XXX ± 0.005 ANGLES ± 0.5°		J. Romie	8/98	GUIDE ROD FIXTURE, BEAMSPLITTER OPTICS
DO NOT SCALE DRAWING		CHECKED		
NEXT ASSEMBLY	MATERIAL		SIZE	REV
FILE LOCATION	FINISH		E D970550	B
			SCALE 1/1	SHEET 3 OF 3