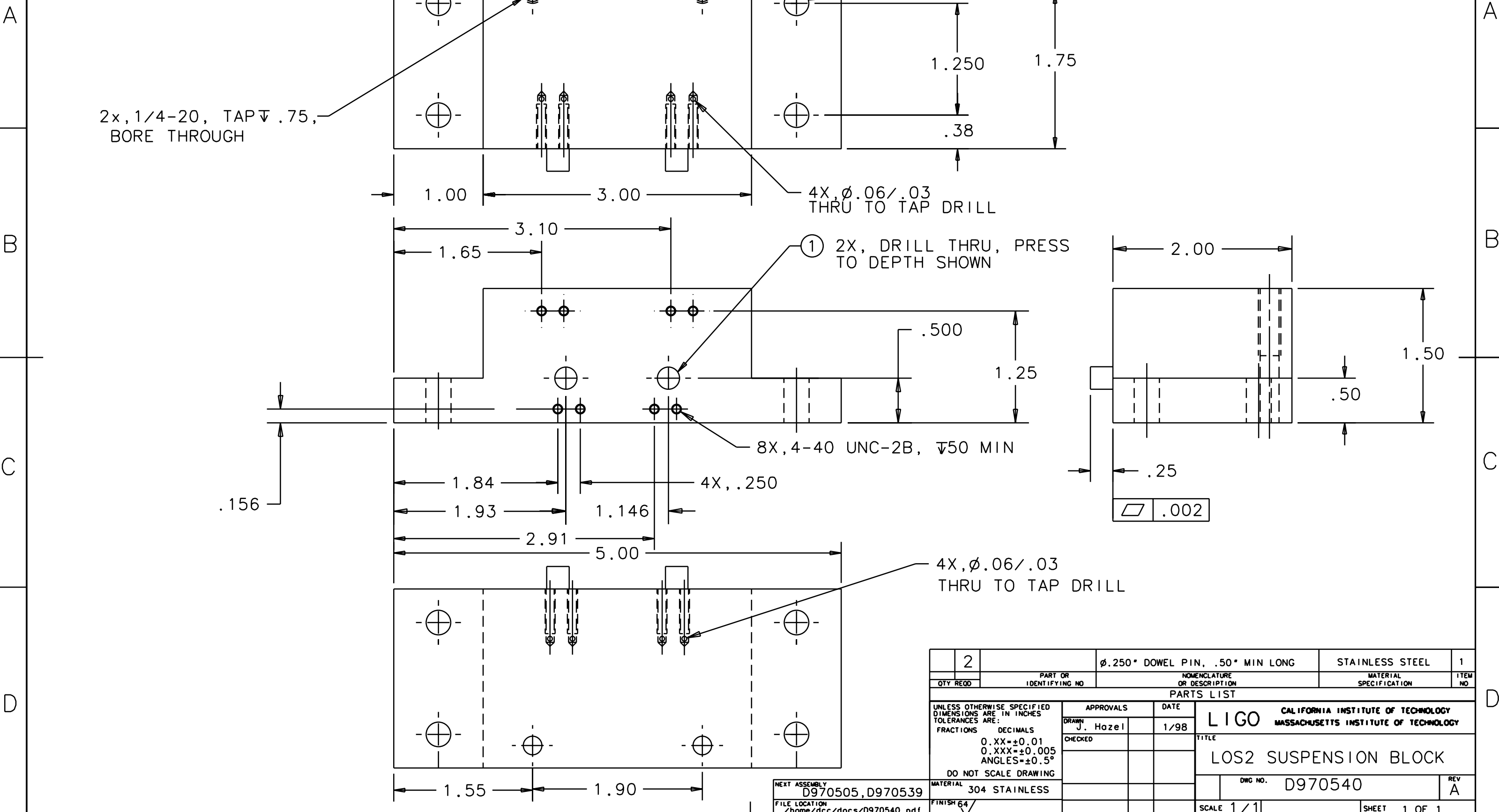


NOTES: (UNLESS OTHERWISE SPECIFIED)

1. BREAK ALL SHARP EDGES.
2. FILLETS: R .015 MAX.

REV	DATE	DRAWN BY	CHECKED	DCC	DCN/DESCRIPTION
A	8-18-98	J. Romie			E980220/INITIAL RELEASE



2x, 1/4-20, TAP ∇ .75,
BORE THROUGH

4X, ϕ .06/.03
THRU TO TAP DRILL

① 2X, DRILL THRU, PRESS
TO DEPTH SHOWN

8X, 4-40 UNC-2B, ∇ 50 MIN

4X, ϕ .06/.03
THRU TO TAP DRILL

\square .002

QTY REQD	PART OR IDENTIFYING NO	NOMENCLATURE OR DESCRIPTION	MATERIAL SPECIFICATION	ITEM NO
2		ϕ .250* DOWEL PIN, .50* MIN LONG	STAINLESS STEEL	1

APPROVALS		DATE	PARTS LIST	
DRAWN	J. Hazel	1/98	LIGO CALIFORNIA INSTITUTE OF TECHNOLOGY MASSACHUSETTS INSTITUTE OF TECHNOLOGY	
CHECKED			TITLE LOS2 SUSPENSION BLOCK	
UNLESS OTHERWISE SPECIFIED DIMENSIONS ARE IN INCHES TOLERANCES ARE: FRACTIONS DECIMALS 0.XX=±0.01 0.XXX=±0.005 ANGLES=±0.5° DO NOT SCALE DRAWING			DWC NO. D970540	
NEXT ASSEMBLY D970505, D970539			MATERIAL 304 STAINLESS	REV A
FILE LOCATION /home/dcc/docs/D970540.pdf			FINISH 64	SCALE 1/1
				SHEET 1 OF 1