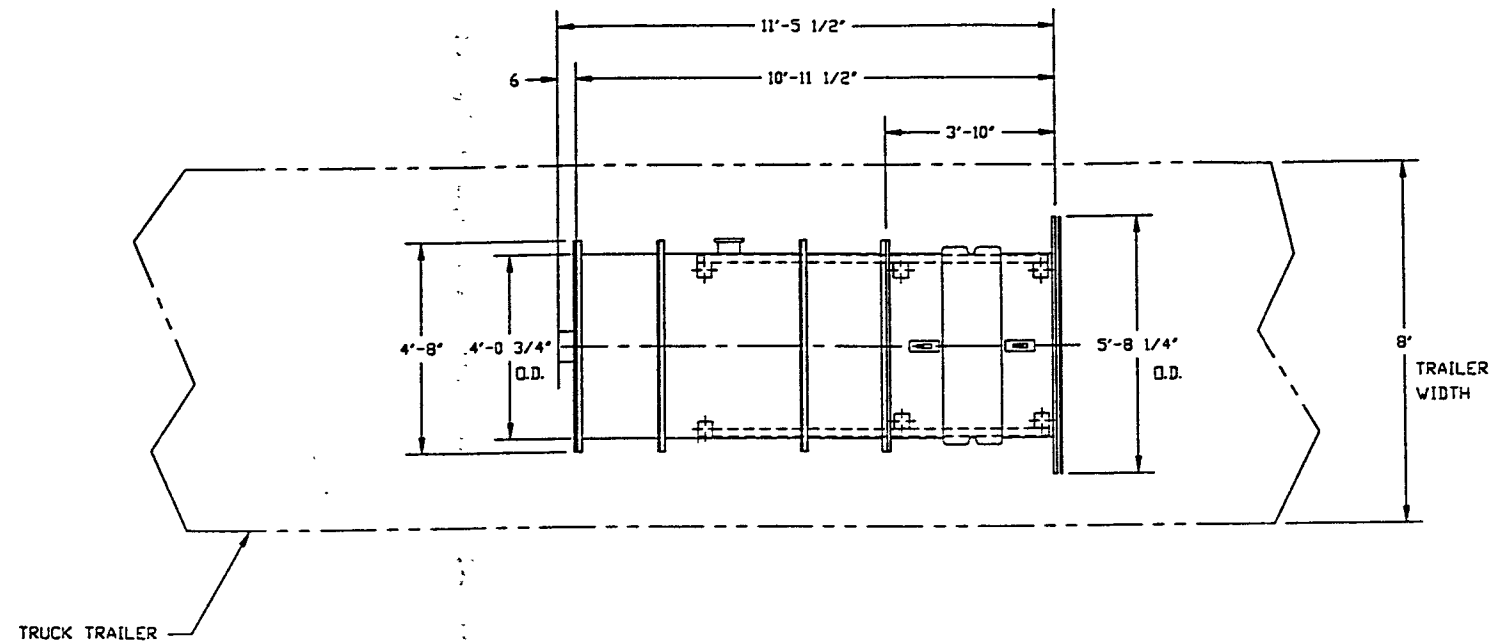
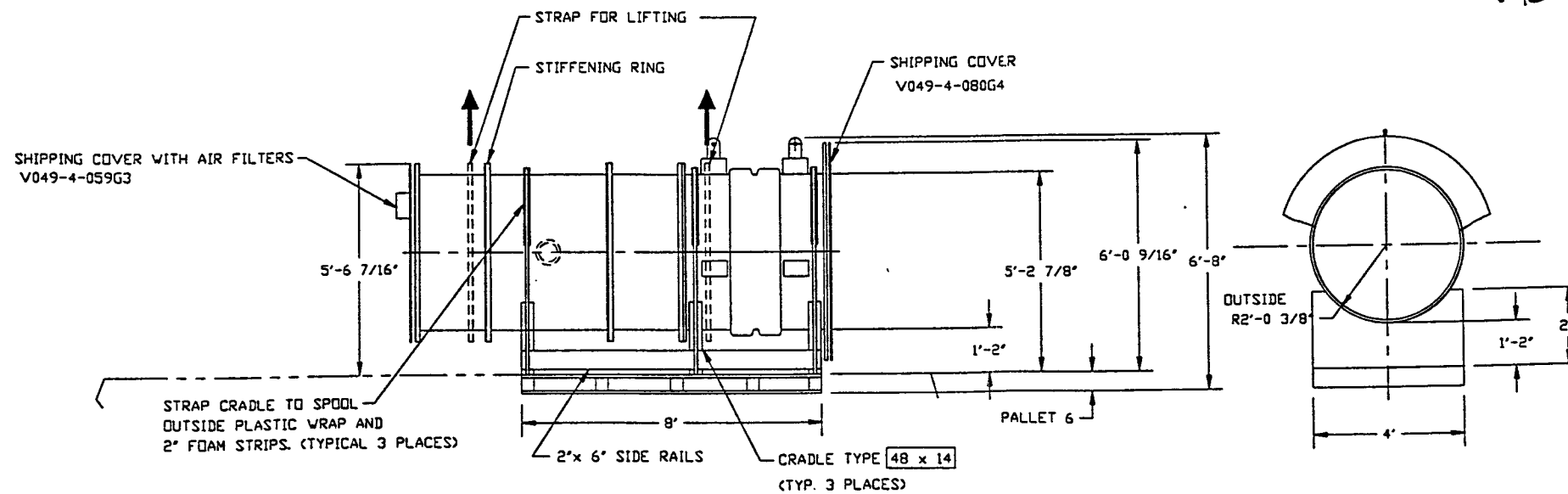


PACKAGING/LIFTING/SHIPPING INSTALLATION

1. REFERENCE DOCUMENTS
COMPONENT PACKAGING, HANDLING, SHIPPING
PROCEDURE - V049-2-123
CONTAMINATION CONTROL PLAN - V049-2-119
2. PROTECT BELLOWS BY WRAPPING WITH HEAVY PLASTIC STRIPS
PRIOR TO BAGGING.
3. ENTIRE VESSEL TO BE SHRINK WRAPPED WITH 2 LAYERS
OF 6 MIL POLYETHYLENE.
4. VESSEL TO BE MOUNTED ON TRAILER IN
ORIENTATION SHOWN.
5. TIGHTEN BELLOWS TIE RODS TO LOCK IN
NEUTRAL LENGTH POSITION.
6. REMOVE FROM TRAILER AT SITE BY LIFTING
WITH STRAPS AT LOCATIONS SHOWN.
7. SECURELY ATTACH THESE LIFTING INSTRUCTIONS
TO VESSEL IN A WATER PROOF
POLYETHYLENE BAG.
8. VESSEL TO BE SHIPPED STRAPPED TO TRUCK AT
CRADLE LOCATIONS SHOWN.
9. COVER WITH CLEAN TIGHT TARPS DURING SHIPPING.
10. VESSEL TO BE SHIPPED VIA AIR RIDE TRAILER ONLY.



NOTE: THE TRUCK DRIVER IS TO
ADD PROPER BRACING TO PREVENT
FORWARD OR AFT MOVEMENT OF
VESSEL DURING SHIPMENT.



SHEET 6 OF 14

SHIPPING WEIGHT: 4000# EA.

PROPRIETARY AND CONFIDENTIAL
THIS DOCUMENT CONTAINS PROPRIETARY
INFORMATION BELONGING TO PROCESS
SYSTEMS INTERNATIONAL, INC. OR ITS
AFFILIATED COMPANIES AND SHALL BE
USED ONLY FOR THE PURPOSE FOR
WHICH IT WAS SUPPLIED. IT SHALL NOT
BE COPIED, REPRODUCED OR OTHERWISE
USED, NOR SHALL SUCH INFORMATION BE
FURNISHED IN WHOLE OR IN PART TO
OTHERS EXCEPT IN ACCORDANCE WITH THE
TERMS OF ANY AGREEMENT UNDER WHICH
IT WAS SUPPLIED OR WITH THE PRIOR
WRITTEN CONSENT OF PROCESS SYSTEMS
INTERNATIONAL, INC. AND SHALL BE
RETURNED UPON REQUEST.

DWG. NO.	DESCRIPTION	DWG. NO.	DESCRIPTION
	REFERENCE DRAWINGS		

UNLESS OTHERWISE SPECIFIED
DIMENSIONS ARE IN INCHES
TOLERANCES:
FRACTIONAL ±
ANGULAR APPROX 10°-30° BEND ±2°
TWO PLACE DECIMAL ± 0.1
THREE PLACE DECIMAL ± 0.03
FINISHED SURFACE RMS
BREAK CORNERS IN
REMOVE ALL BURRS

DO NOT SCALE THIS DRAWING	0	ISSUED FOR SHIPPING																		
USED ON	REV	DESCRIPTION	ISSUE DESCRIPTION	CHKD	DRWN	DATE	DECD													
NEXT ASS'Y																				

PROCESS SYSTEMS INTERNATIONAL, INC.
20 WALKUP DR. WESTBOROUGH, MASSACHUSETTS 01581 USA

SHIPPING SPOOL WB-6/WA-6B
SHIPPING SPOOL WB-7/WA-6A
SHIPPING SPOOL B-4/A-12
LIGO VACUUM EQUIPMENT

CAD FILE: V0494225
SIZE: D
DWG NO.: V049-4-225
REV: 0

SCALE: 1/2"=1'-0"
SHEET: 2

L190-D970523-00-V

11/08/1997 - 09:59:07