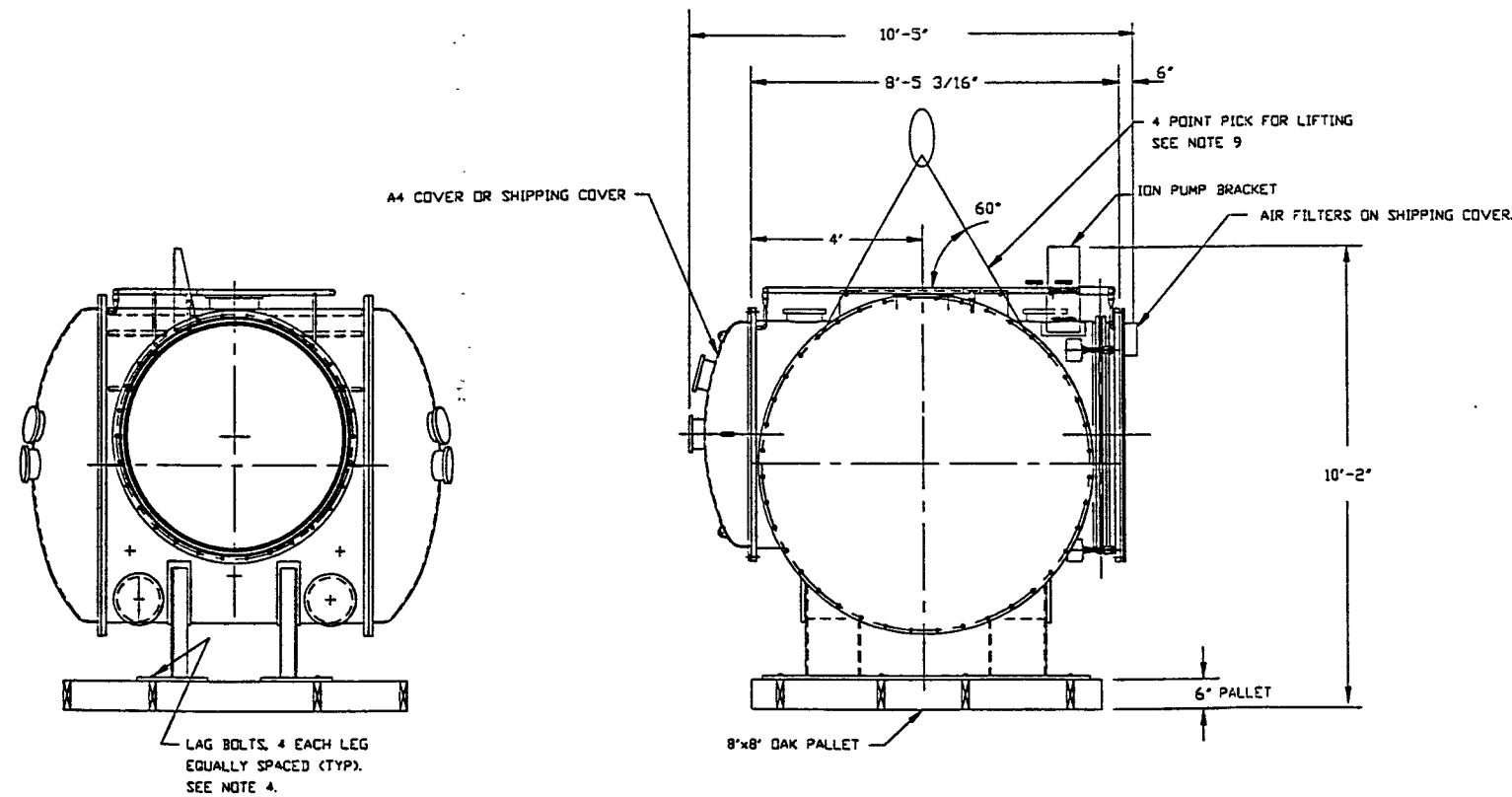
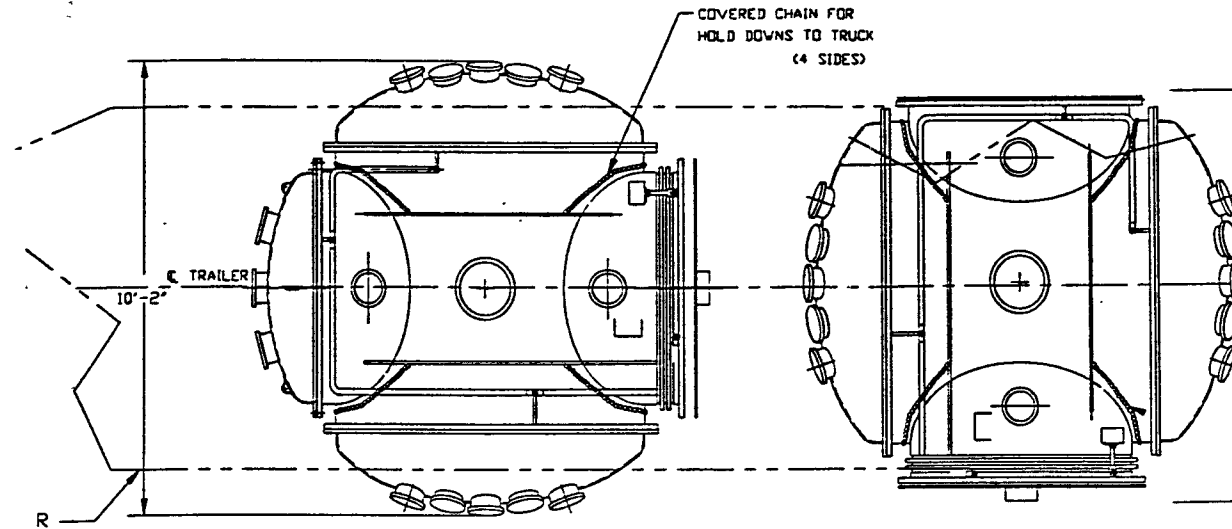


PACKAGING/LIFTING/SHIPPING INSTALLATION

1. REFERENCE DOCUMENTS  
COMPONENT PACKAGING, HANDLING, SHIPPING  
PROCEDURE - V049-2-123  
CONTAMINATION CONTROL PLAN - V049-2-119
2. PROTECT BELLOWS BY WRAPPING WITH HEAVY  
PLASTIC STRIPS PRIOR TO BAGGING.
3. ENTIRE VESSEL TO BE SHRINK WRAPPED WITH 2 LAYERS  
OF 6 MIL POLYETHYLENE.
4. LAG VESSEL TO PALLET USING  
3/4" X 7" LONG LAG BOLTS.  
BOLTS TO BE LAGGED TO 4 X 6 SUPPORTS.
5. PALLETS TO BE 8 FT X 8 FT OAK CONSTRUCTION  
WITH 4 X 6 FRAMING & 2 X 6 ROUGH CUT PLANKS.  
4 X 6 FRAMING TO STRADDLE VESSEL LEGS  
AS SHOWN. ALLOW 8" WIDE OPENING FOR  
FORK LIFT ACCESS.
6. VESSEL TO BE MOUNTED ON TRAILER IN  
ORIENTATION SHOWN.
7. CHAIN VESSEL TO TRUCK USING 1" CHAIN  
ATTACHED TO VESSEL AT LIFTING LUGS.  
TYPICAL 4 PLACES.
8. WRAP CHAIN IN 1/8" THK. 1 1/2" I.D.  
VINYL HOSE TO PROTECT VESSEL.  
TYPICAL 4 PLACES.
9. REMOVE FROM TRAILER AT SITE BY LIFTING  
FROM 4 LIFTING LUGS. MINIMUM CHAIN ANGLE  
60° AS SHOWN.
10. SECURELY ATTACH THESE LIFTING INSTRUCTIONS  
TO VESSEL IN A WATER PROOF  
POLYETHYLENE BAG.
11. VESSEL TO BE SHIPPED CHAINED TO TRUCK.
12. COVER WITH CLEAN TARPS DURING SHIPPING.
13. VESSEL TO BE SHIPPED VIA AIR RIDE  
TRAILER ONLY.

*PART OF  
ATTACHMENTS "N"*



*NOTE! THE TRUCK DRIVER IS TO ADD  
PROPER BRACING TO PREVENT FORWARD  
OR AFT MOVEMENT OF VESSELS  
DURING SHIPMENT.*

*SHT 3 OF 14*  
APPROX. WEIGHT = 9500#

PROPRIETARY AND CONFIDENTIAL

THIS DOCUMENT CONTAINS PROPRIETARY INFORMATION BELONGING TO PROCESS SYSTEMS INTERNATIONAL, INC. OR ITS AFFILIATED COMPANIES AND SHALL BE USED ONLY FOR THE PURPOSES FOR WHICH IT WAS SUPPLIED. IT SHALL NOT BE COPIED, REPRODUCED OR OTHERWISE USED, NOR SHALL SUCH INFORMATION BE FURNISHED IN WHOLE OR IN PART TO OTHERS EXCEPT IN ACCORDANCE WITH THE TERMS OF ANY AGREEMENT UNDER WHICH IT WAS SUPPLIED OR WITH THE PRIOR WRITTEN CONSENT OF PROCESS SYSTEMS INTERNATIONAL, INC. AND SHALL BE RETURNED UPON REQUEST.

UNLESS OTHERWISE SPECIFIED  
DIMENSIONS ARE IN INCHES  
TOLERANCES:  
FRACTIONAL ±  
ANGULAR APPROX ±0°-30' 30" ±2"  
TWO PLACE DECIMAL ±.01  
THREE PLACE DECIMAL ±.005  
FINISHED SURFACE IN  
BREAK CORNERS 1/4" CUT  
REMOVE ALL BURRS

DO NOT SCALE THIS DRAWING  
USED ON  
NEXT ASS'Y:

REV 0 ISSUED FOR SHIPPING  
DESCRIPTION  
ISSUE DESCRIPTION



PROCESS SYSTEMS INTERNATIONAL INC.  
20 WALKUP DR. WESTBOROUGH, MASSACHUSETTS 01581 USA

HAM SHIPPING ASSEMBLY  
W/ A-4 COVER &  
WITHOUT A-4 COVER

CAD FILE V0494219 SIZE D DWG NO V049-4-219 REV 0

SCALE 1/2"=1'-0" SHEET

WIGO-D970520-00-V

JUN 26 1997 - 13:35:58