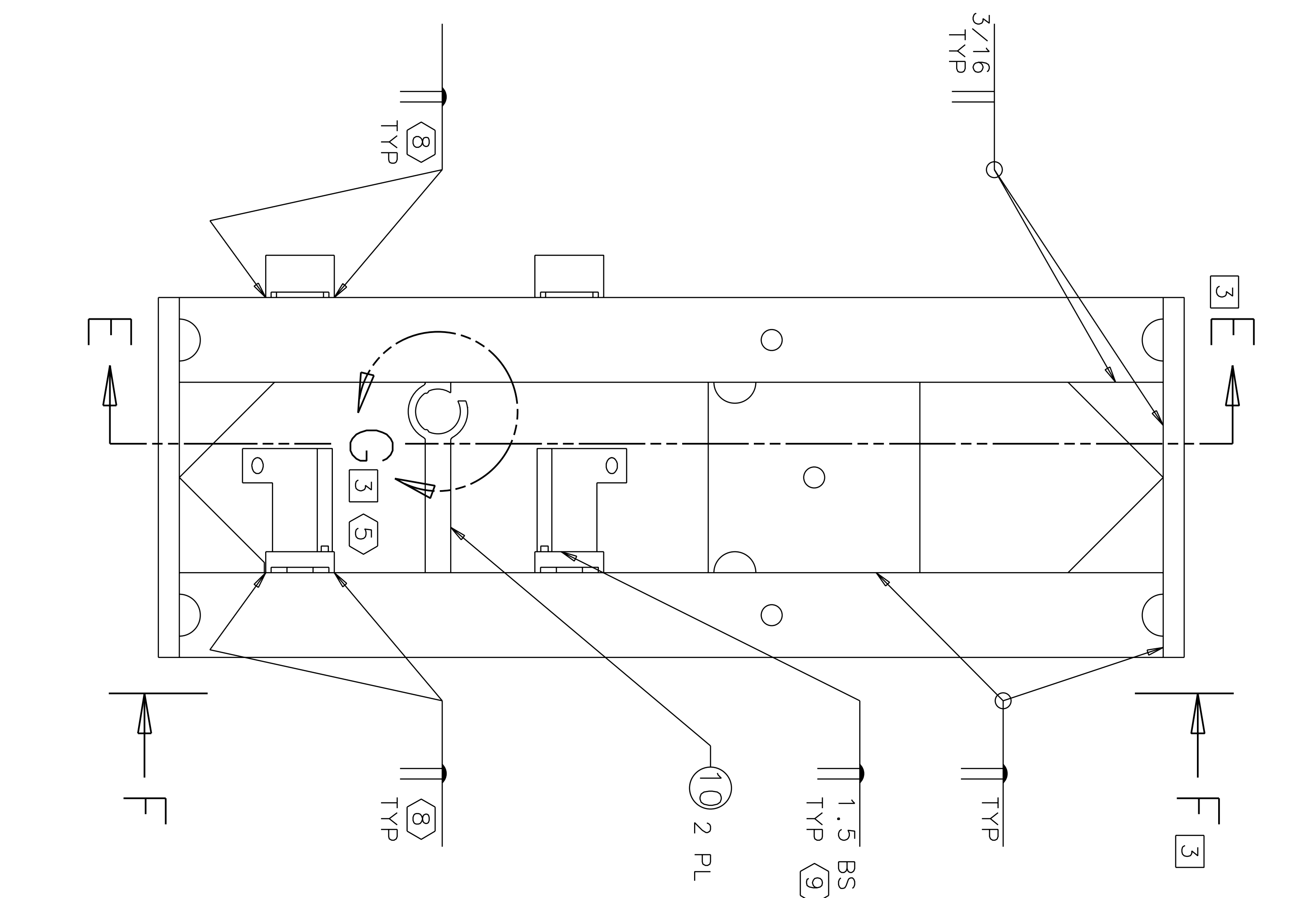
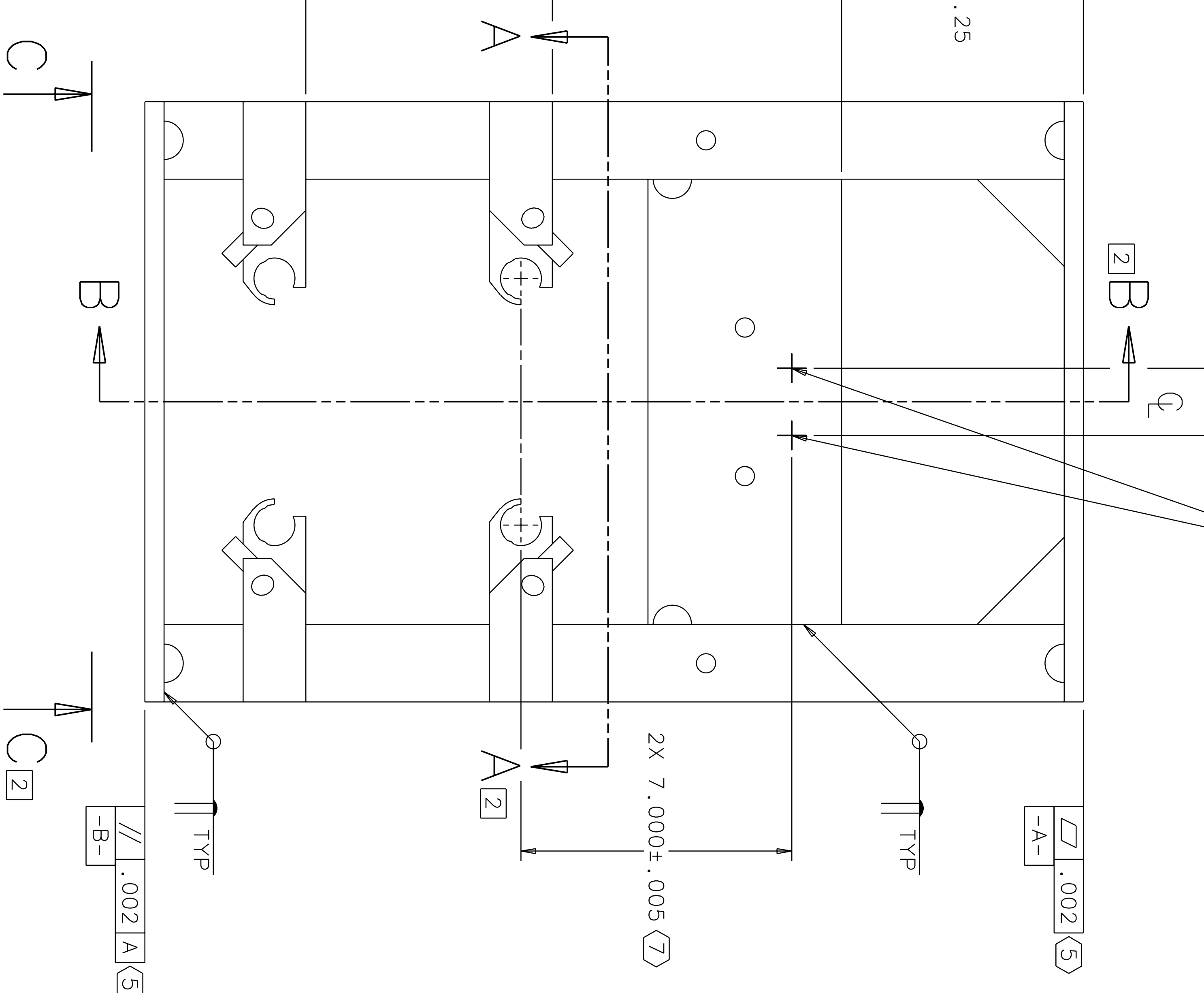
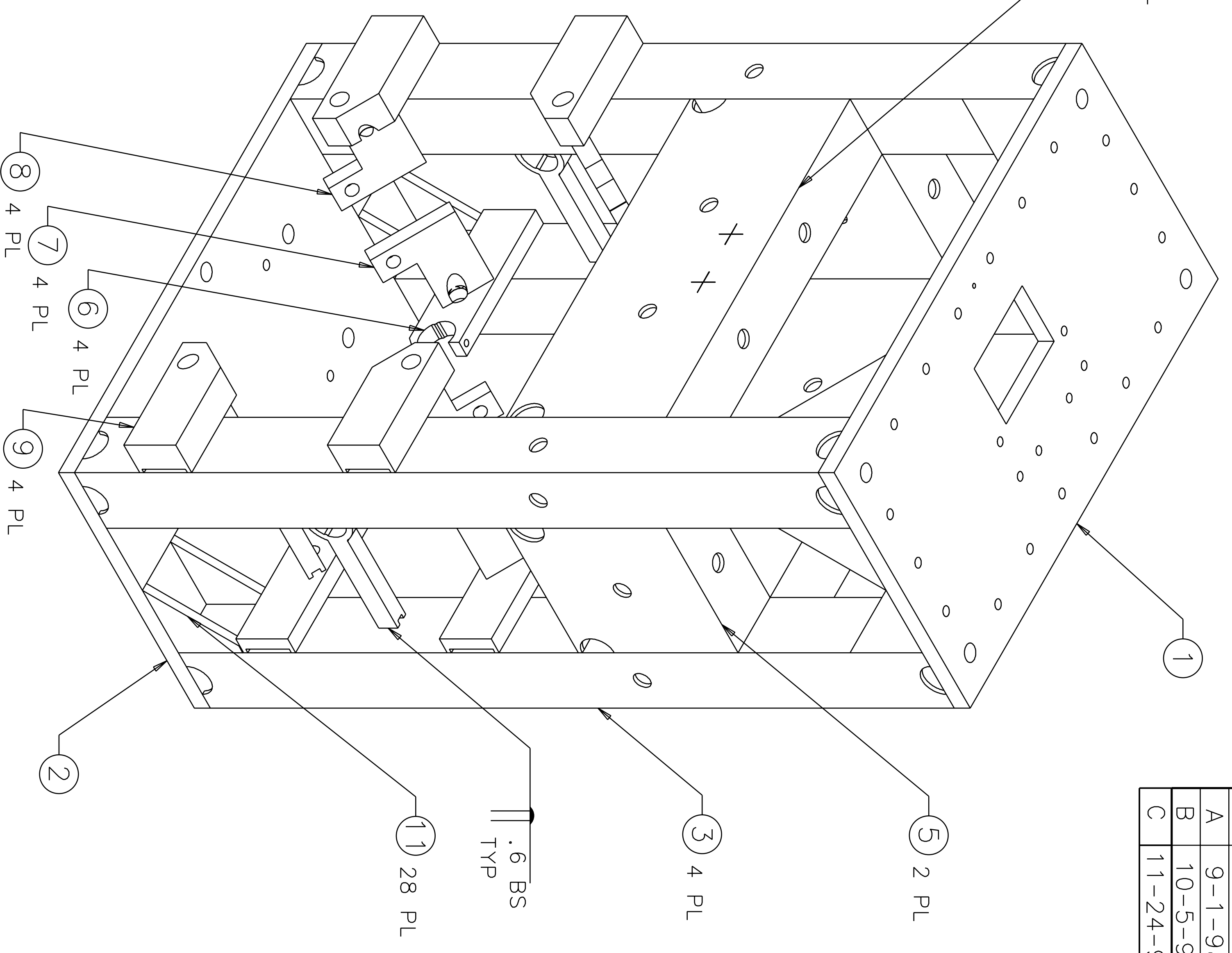
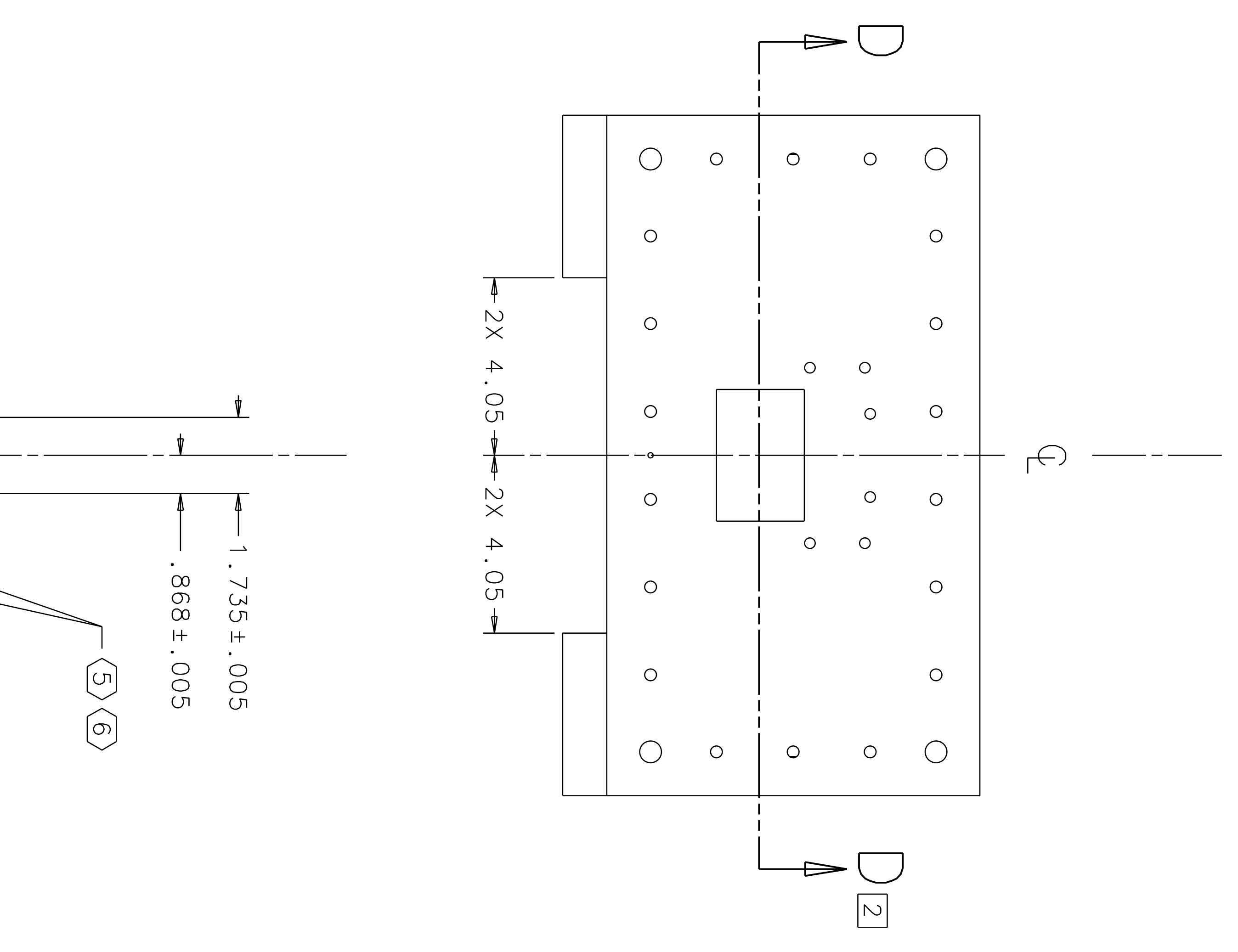


REV	DATE	DRAWN BY	CHECKED	DOC	CON/DESCRIPTION
A	9-1-98	C. Conley			E980218-00/INITIAL RELEASE
B	10-5-98	J. Romie			E980255-00
C	11-24-98	J. Romie			E980341-00

NOTES: (UNLESS OTHERWISE SPECIFIED)

- INTERPRET DRAWING PER ANSI Y14.5M-1982.
- BREAK ALL SHARP EDGES.
- SPECIFICATIONS FOR THE CONSTRUCTION OF THIS ASSEMBLY ARE DETAILED IN THE "LARGE OPTIC SUSPENSION STRUCTURAL FABRICATION SPECIFICATION" (LIGO E970038).
- WHEREVER APPLICABLE, PARTS AND FEATURES ARE LOCATED RELATIVE TO ITEM 1 (TOP PLATE).
- NOTED FEATURES TO BE MACHINED AFTER ANNEALING.
- SIZE OF CROSSHAIR MARKS TO BE APPROXIMATELY AS SHOWN. ETCH OR SCRIBE ON FACE OF STRUCTURE AFTER ANNEALING. MAXIMUM WIDTH .01, MAXIMUM DEPTH .02.
- CROSSHAIRS AFTER ANNEALING. SEE VIEW F-F, SHEET 3, FOR LOCATIONS AND MACHINING DETAILS OF FEATURES ON ITEMS 6 (SENSOR/ACTUATOR BRACKET), FROM WHICH CROSSHAIRS ARE VERTICALLY LOCATED.
- MELT-THROUGH WELD ACROSS ENTIRE FLAT FACE OF ITEM 3 (LEG).
- APPLYS TO WELDMENT OF ITEM 7 (REAR SAFETY STOP BRACKET) TO ITEM 6 (SENSOR/ACTUATOR BRACKET) AND ITEM 8 (FRONT SAFETY STOP BRACKET) TO ITEM 9 (BRACKET SUPPORT).
- SIDE FACE OF ITEM 2 (BOTTOM PLATE).
- REFERENCE TO SIDE FACE OF ITEM 1 (TOP PLATE).
- TOOLING BALL TO BE MOUNTED ON DRILLING FIXTURE TO NOTED RELATIVE DIMENSIONS.
- GUSSET THICKNESSES ARE NOT TO SCALE IN DRAWING VIEWS.

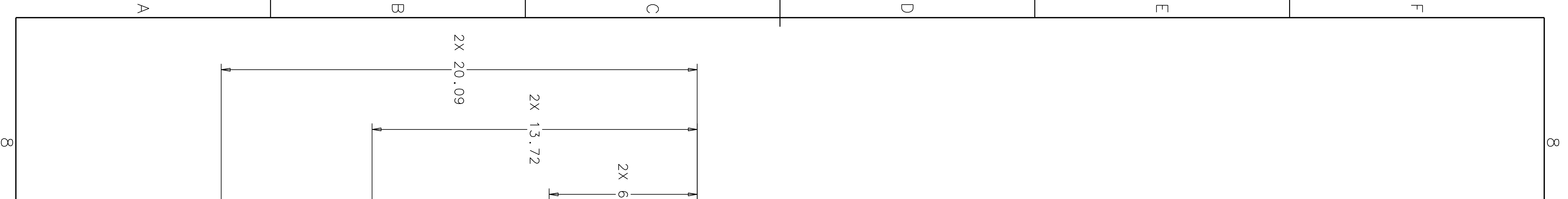


QTY	REV	NO	FSOM	PART OR IDENTIFYING NO	MANUFACTURE OR DESCRIPTION	MATERIAL SPECIFICATION	ITEM NO
24		1		D970557	GUSSET, 2.25 x 2.25 x 45°, .12 THK (13)	304 STAINLESS STEEL	11
2		2		D970558	SLIDE SENSOR/ACTUATOR BRACKET		10
4		3		D970559	BRACKET SUPPORT		9
4		4		D980373	FRONT SAFETY STOP BRACKET		8
4		5		D980374	REAR SAFETY STOP BRACKET		7
4		6		D970559	SLIDE SENSOR/ACTUATOR BRACKET		6
4		7		D960506	FRONT STIFFENER		5
4		8		D960502	LEG		4
4		9		D960504	LEG		3
1		1		D960505	BOTTOM PLATE		2
1		1		D970556	TOP PLATE		1

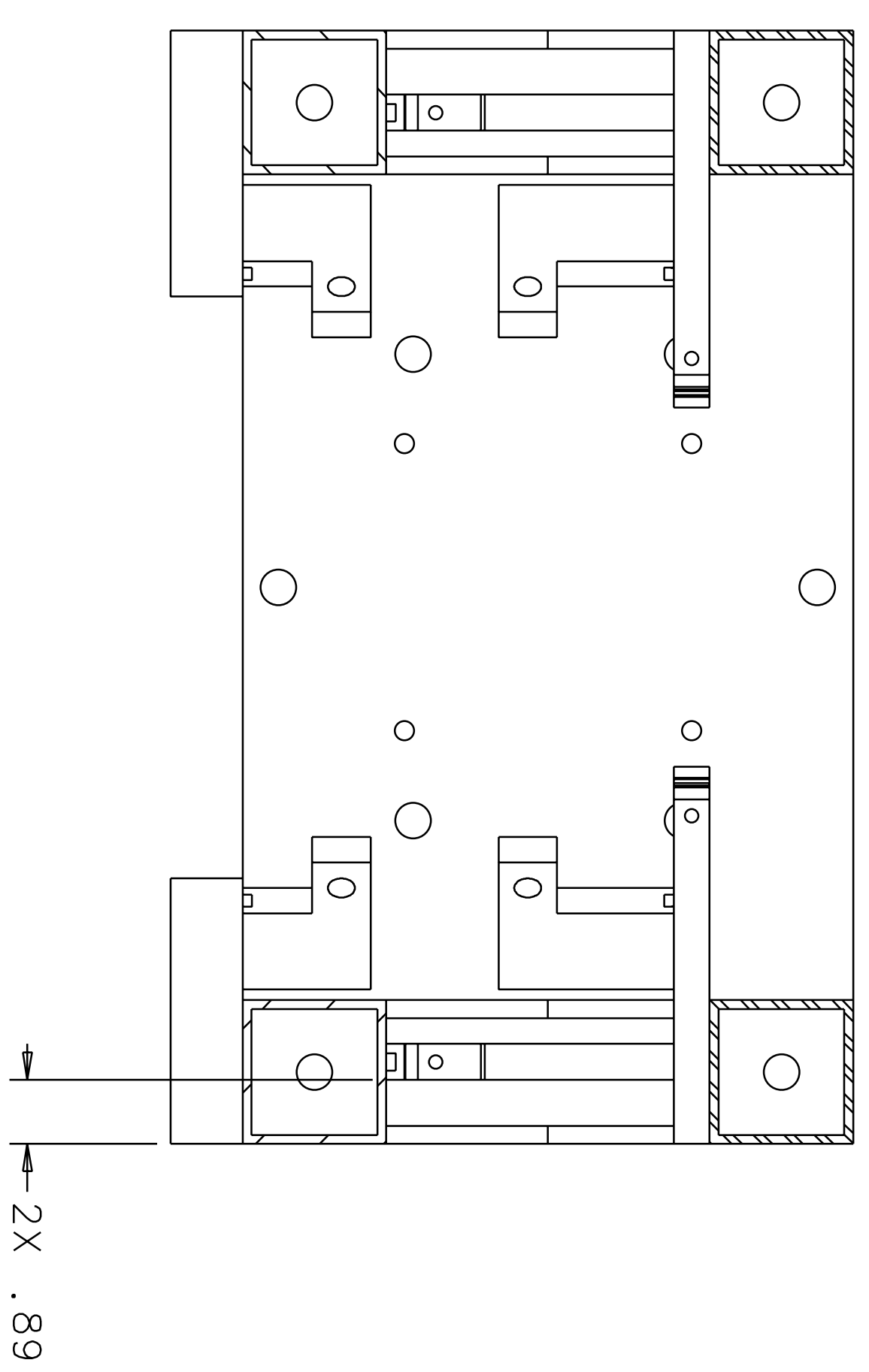
DRWN	DATE	TITLE
C. Conley	9-1-98	STRUCTURE ASSEMBLY (FOLDING MIRROR)

APPD	DATE	TITLE
C. Conley	9-1-98	STRUCTURE ASSEMBLY (FOLDING MIRROR)

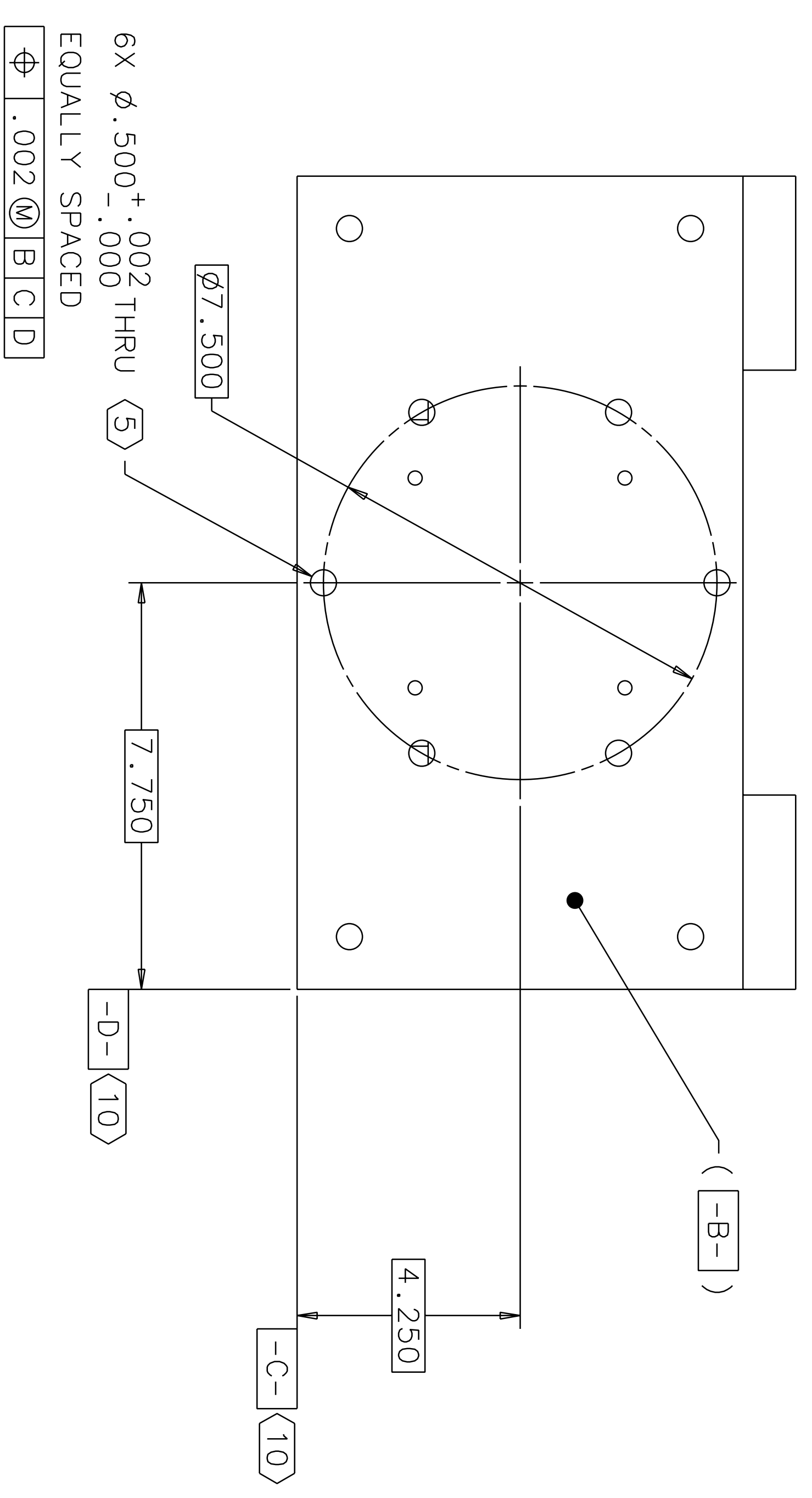
UNLESS OTHERWISE SPECIFIED:
 DIMENSION UNITS ARE INCHES [mm]
 TOLERANCES ARE:
 X.XXX: ± 0.01
 X.XX: ± 0.03
 ANGLES: ± 0.5°



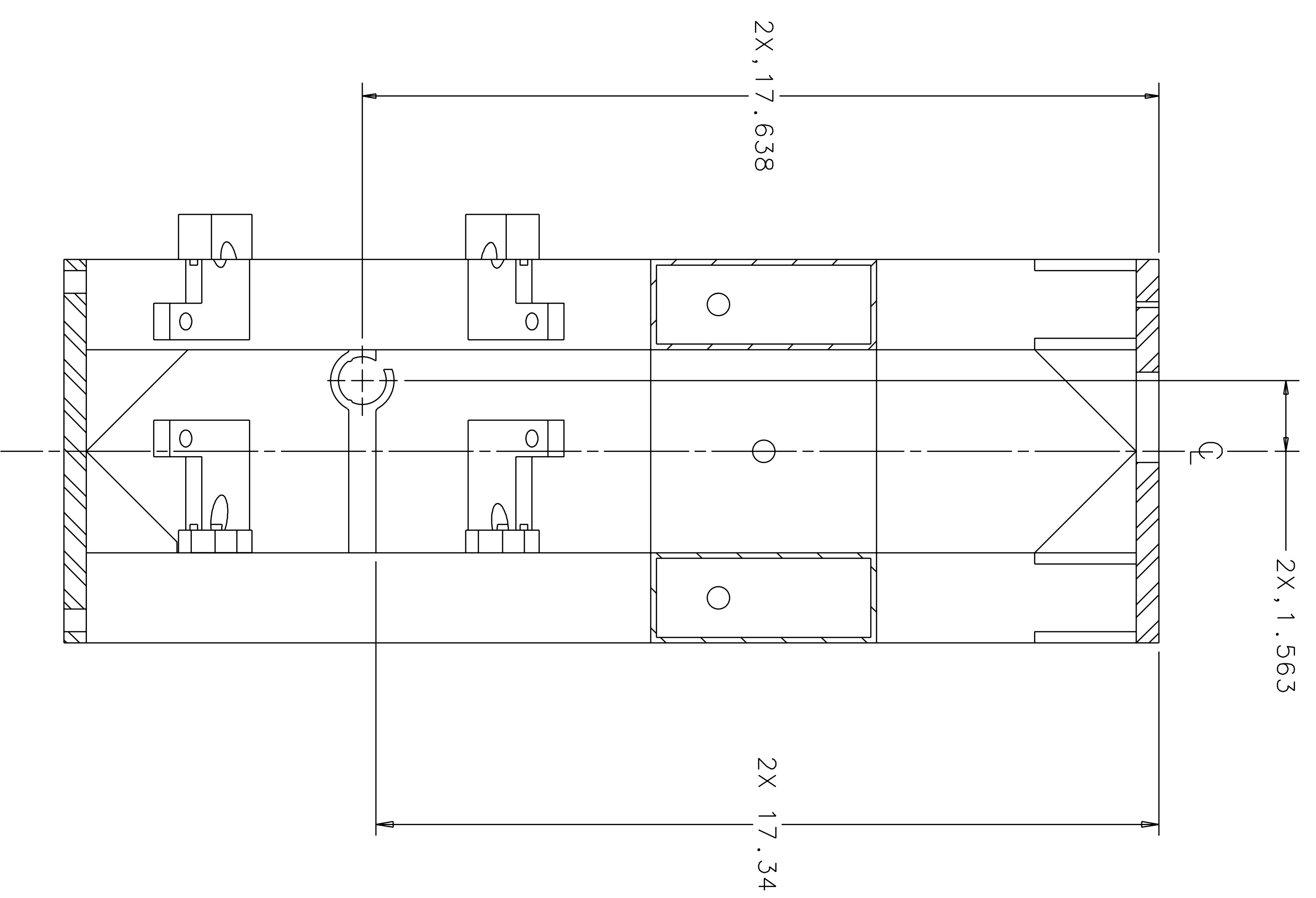
SCALE: NTS
 SIZE DRAWING NUMBER
 D970508-C-D
 SHEET 1 OF 7



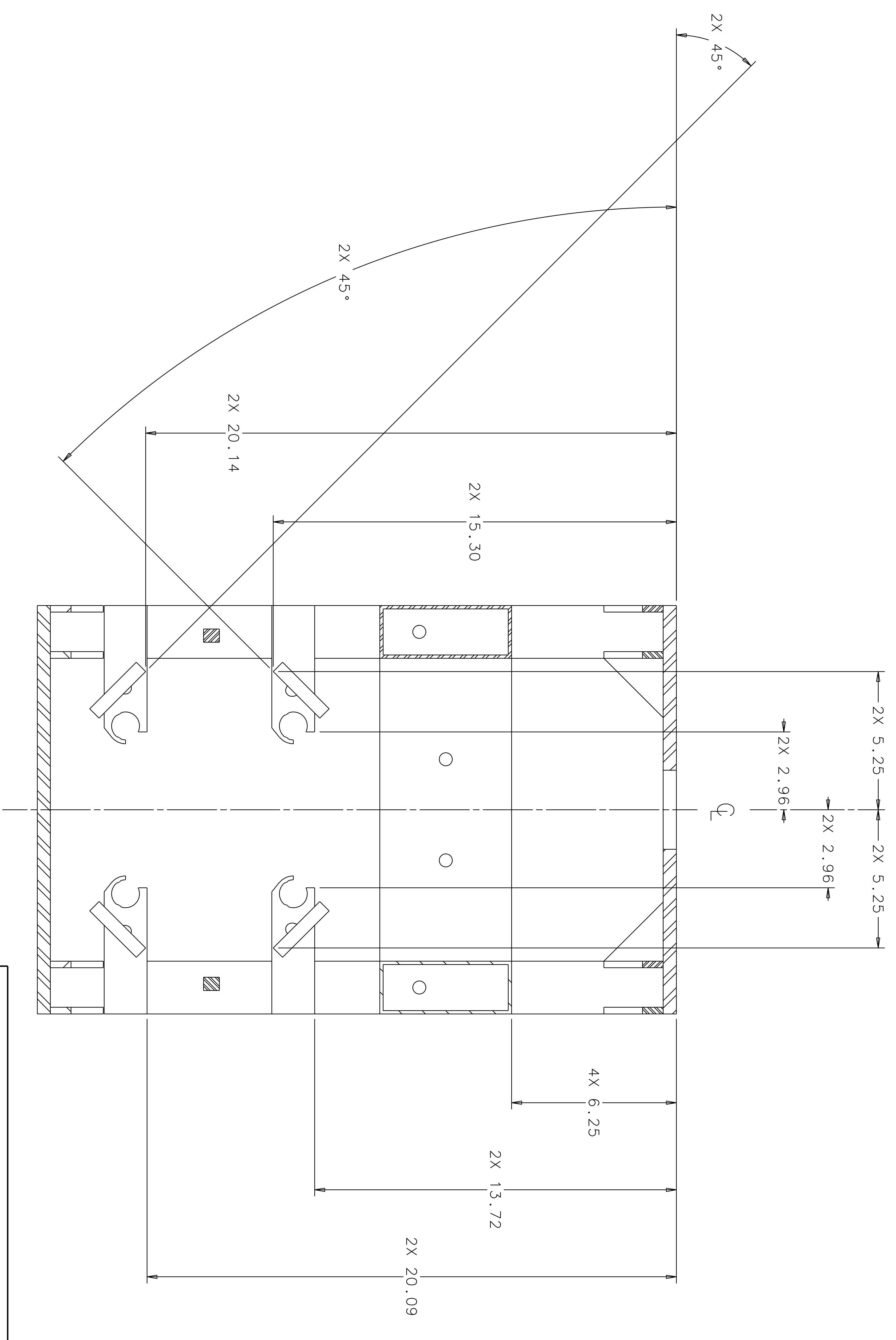
SECTION A-A 1



VIEW C-C 1



SECTION B-B 1

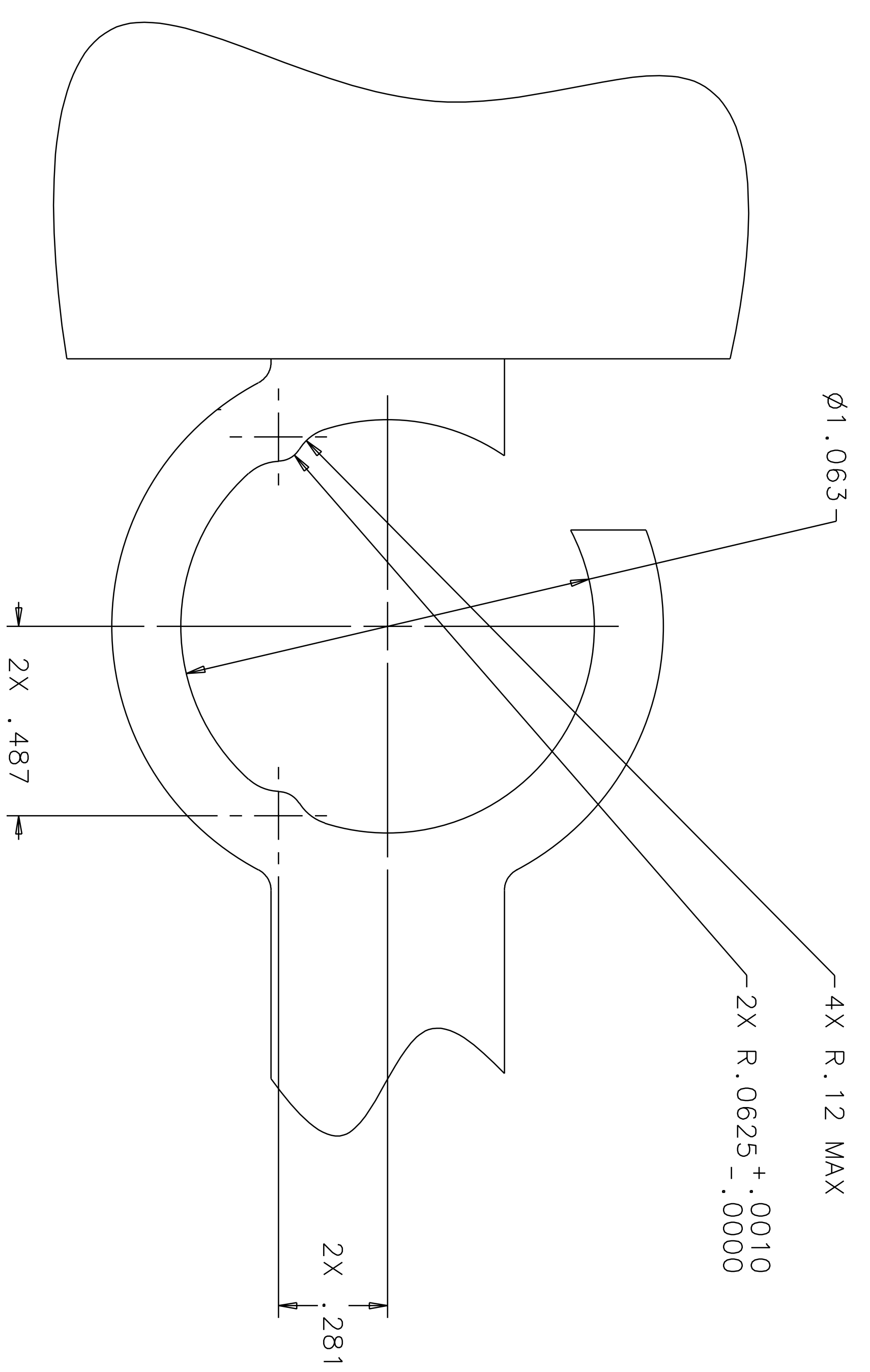


SECTION D-D 1

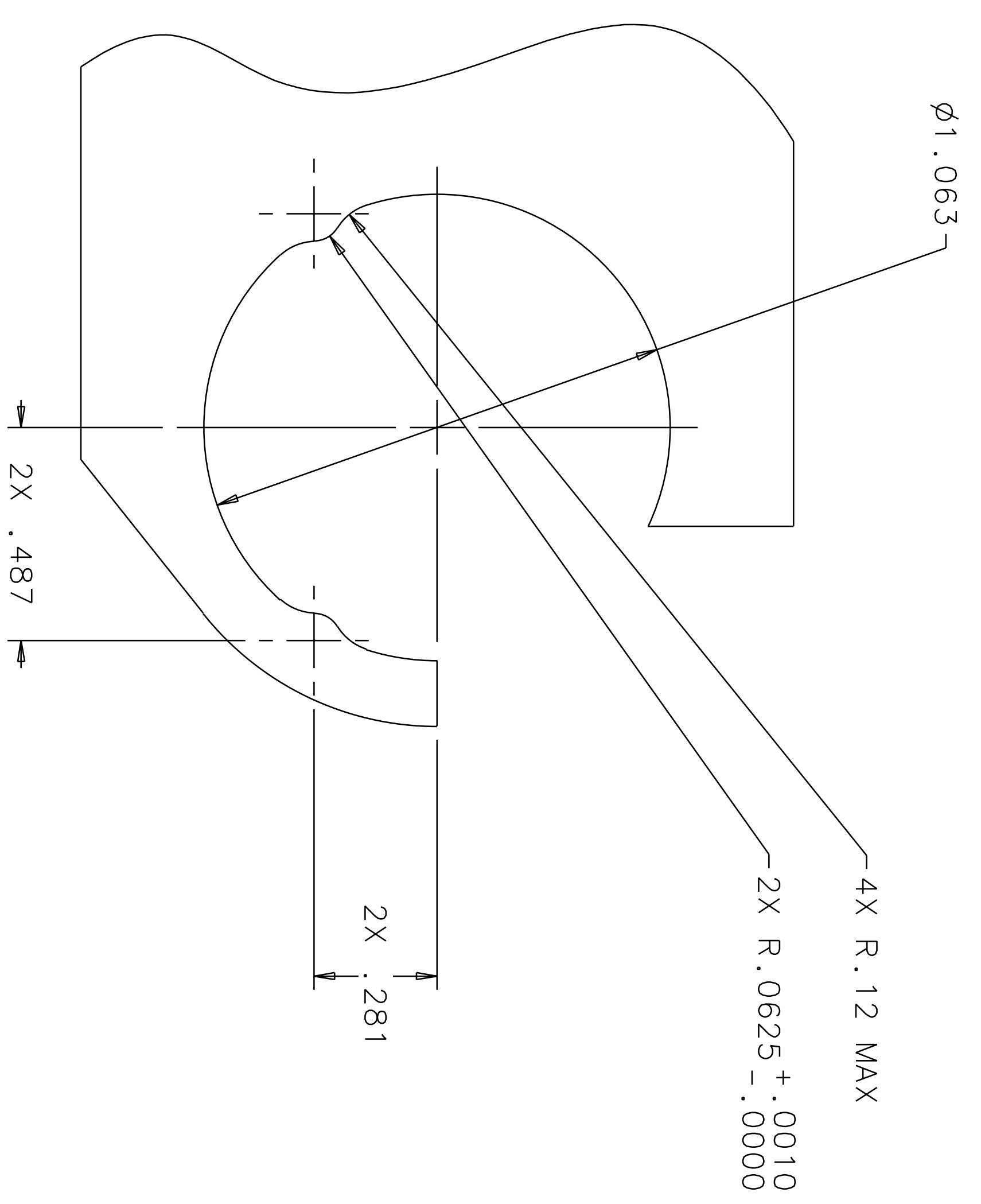
CALIFORNIA INSTITUTE OF TECHNOLOGY
 MASSACHUSETTS INSTITUTE OF TECHNOLOGY

LOS3
 LIGO PROJECT
 STRUCTURE ASSEMBLY
 (FOLDING MIRROR)

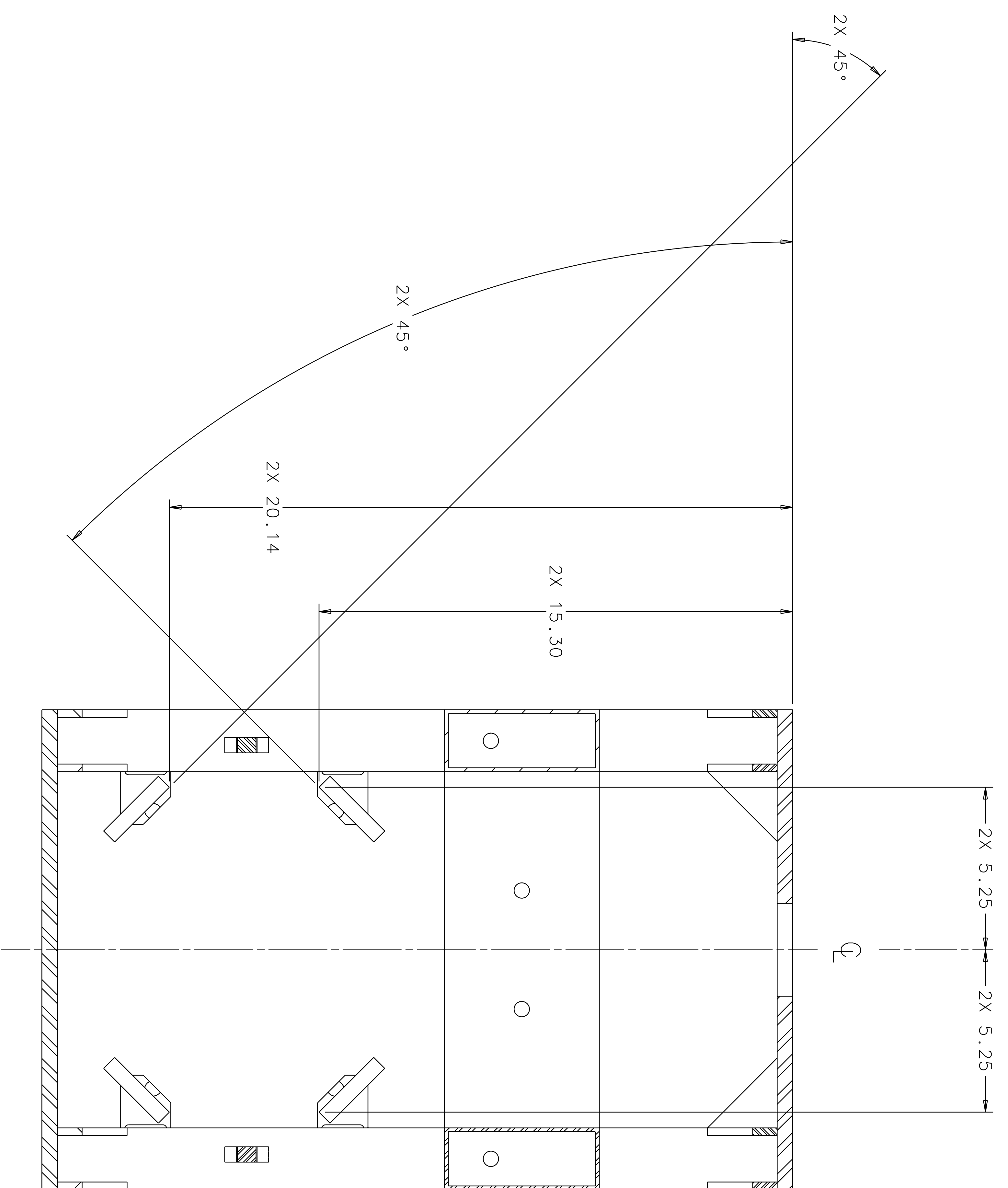
SCALE: NTS
 SIZE DRAWING NUMBER
 E D970508-C-D
 SHEET
 2 OF 7



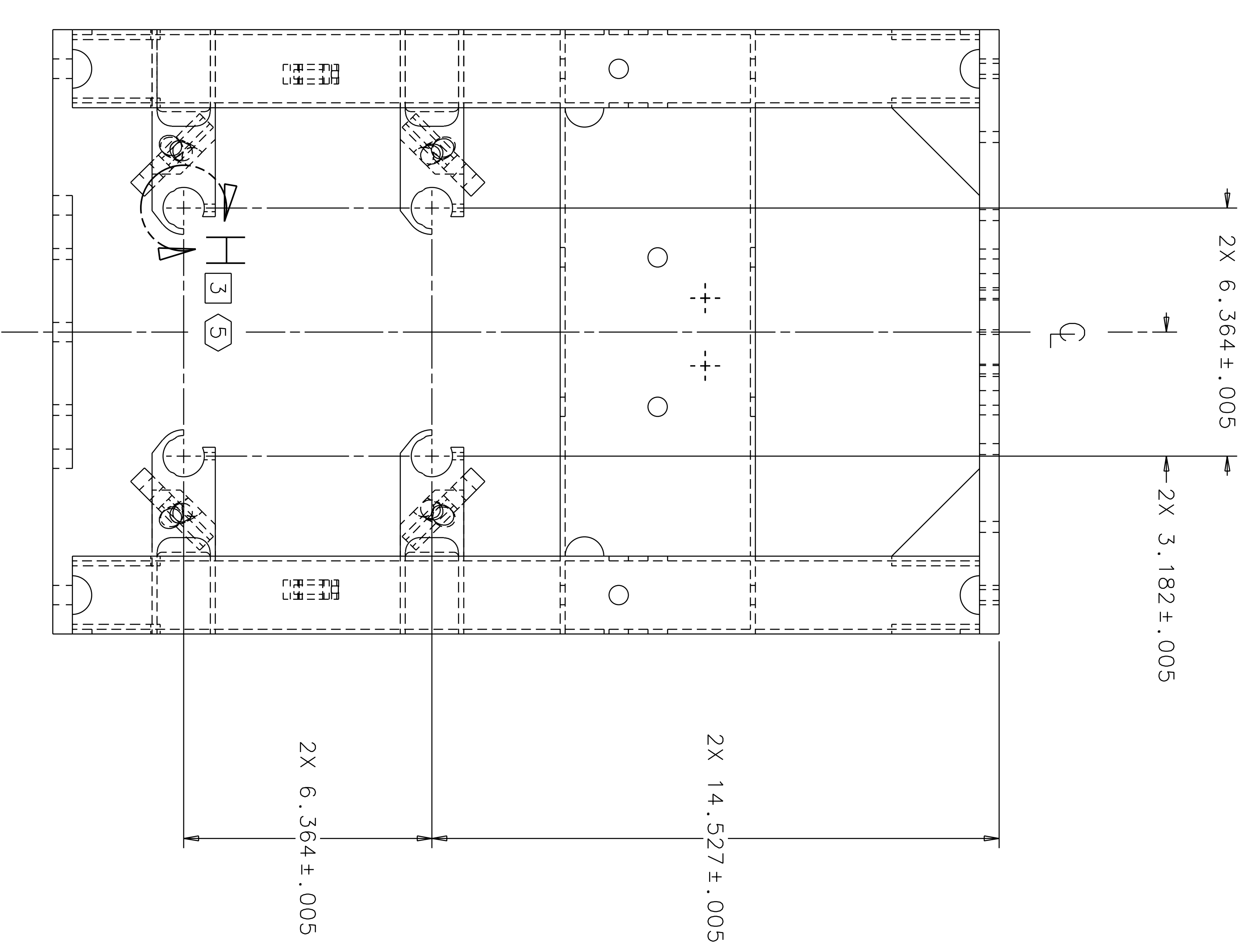
VIEW G 1 5
MACHINED SENSOR/ACTUATOR RECEPTACLE, 2 PL



VIEW H 3 5
MACHINED SENSOR/ACTUATOR RECEPTACLE, 4 PL



SECTION E-E 1

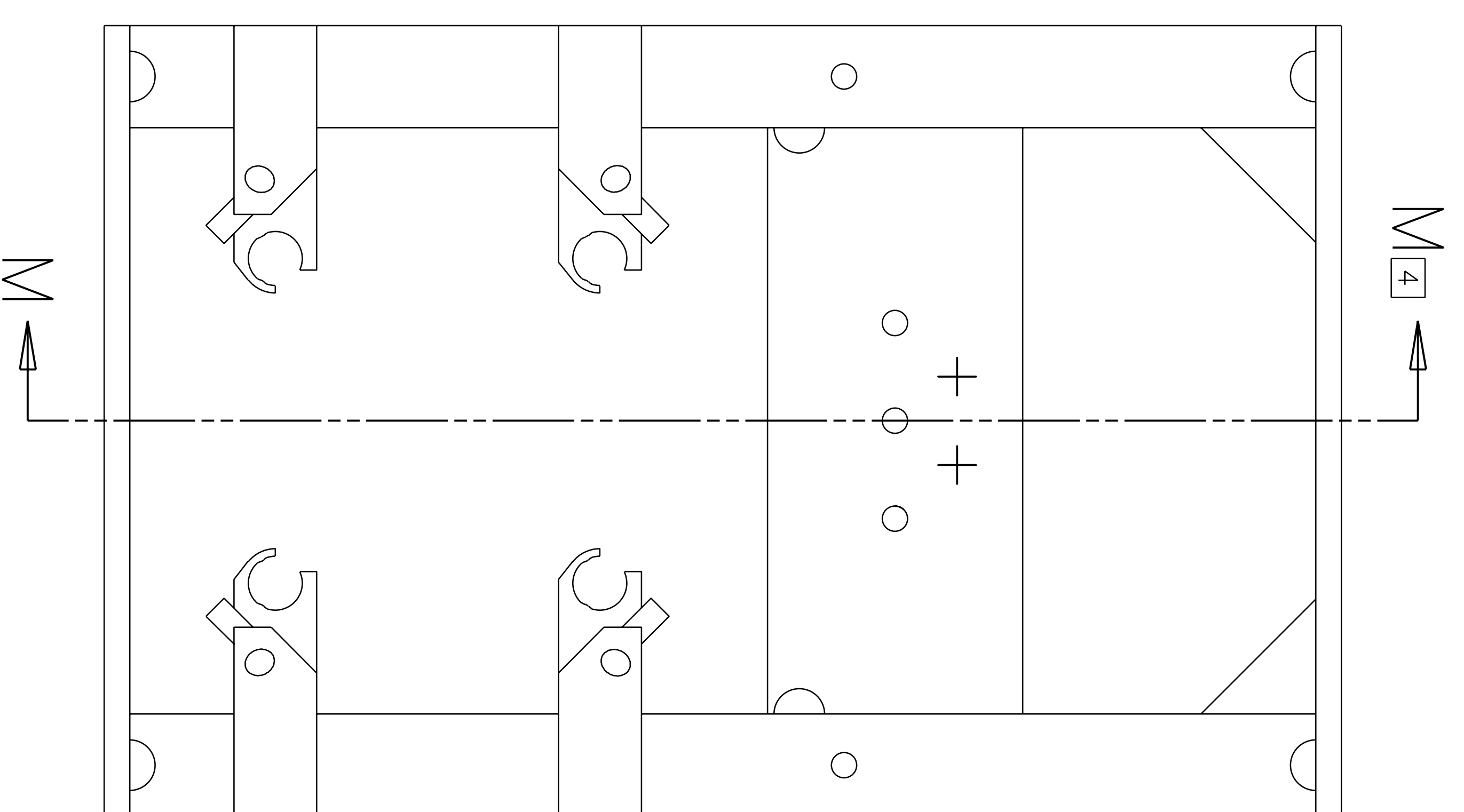
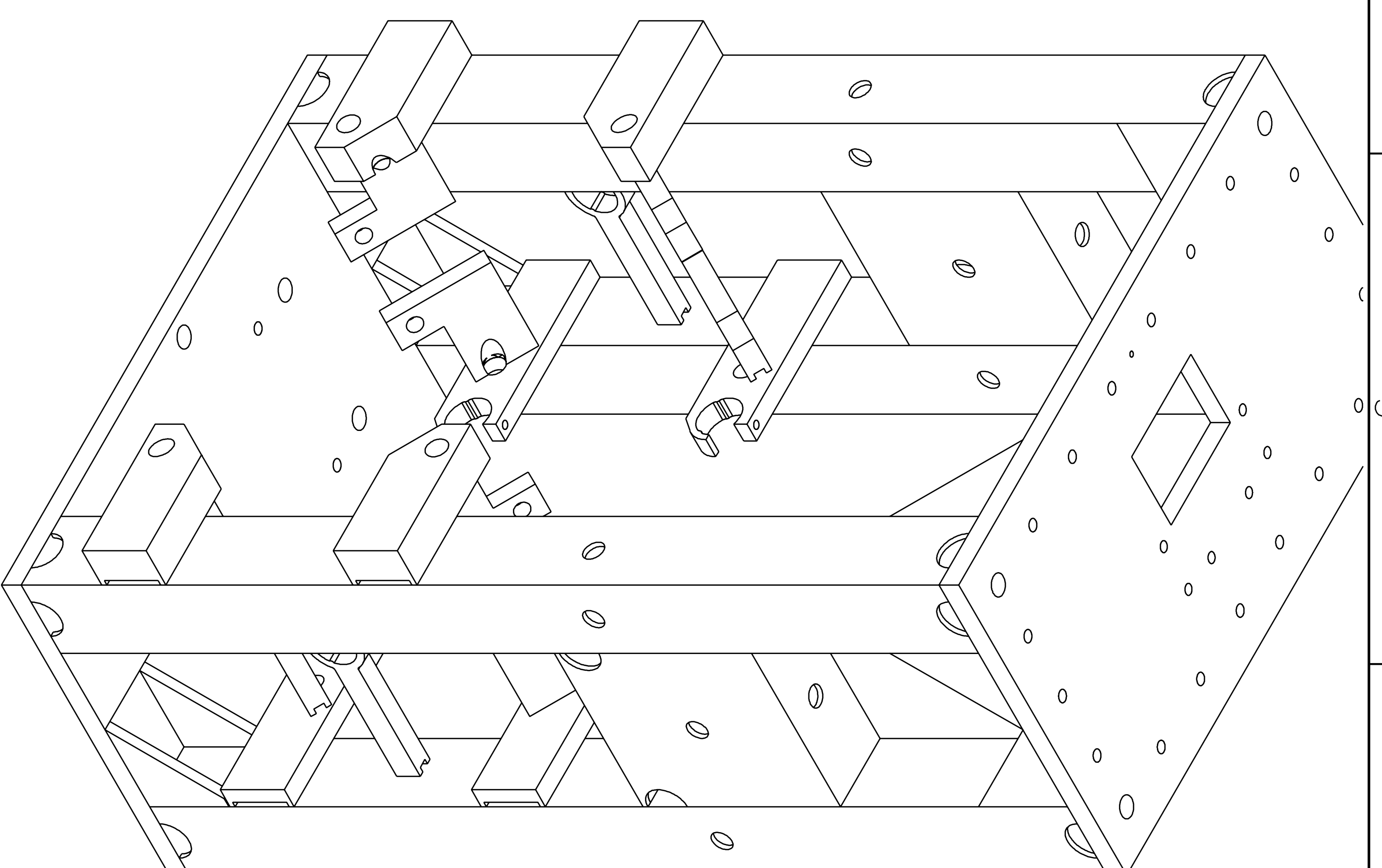
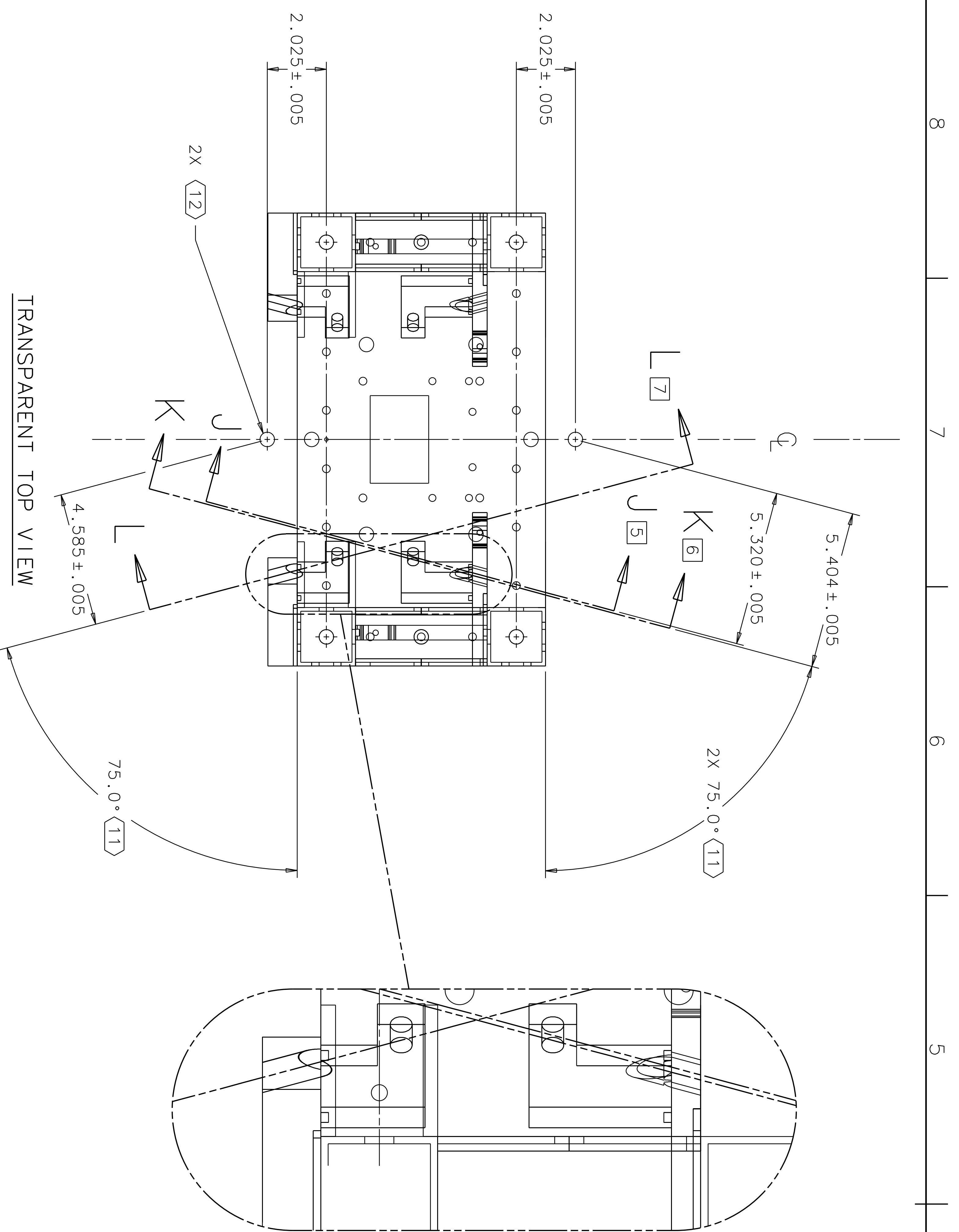


VIEW F-F 1

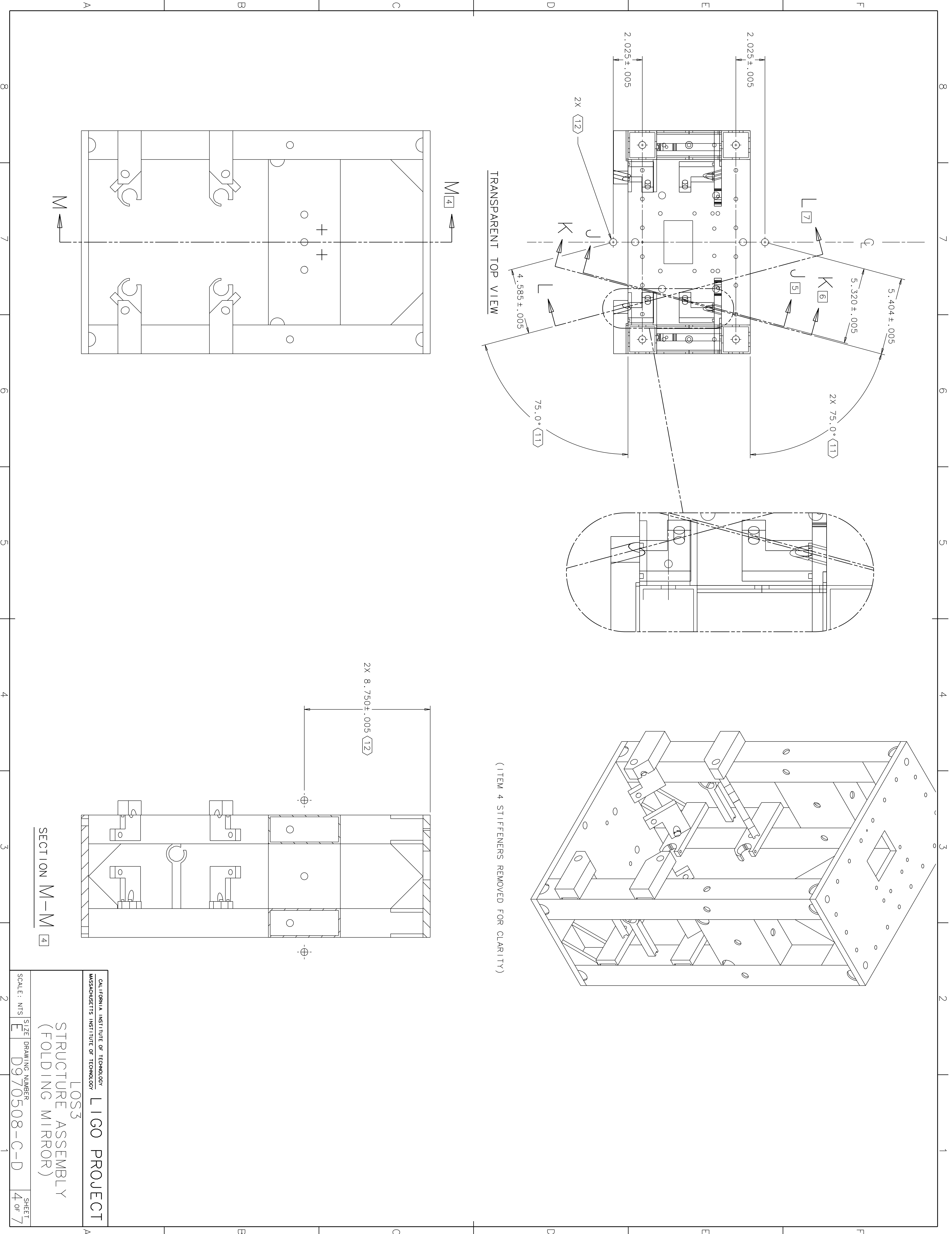
CALIFORNIA INSTITUTE OF TECHNOLOGY
MASSACHUSETTS INSTITUTE OF TECHNOLOGY

LOS3
STRUCTURE ASSEMBLY
(FOLDING MIRROR)

SCALE: NTS
SIZE
DRAWING NUMBER
D970508-C-D
SHEET
3 OF 7



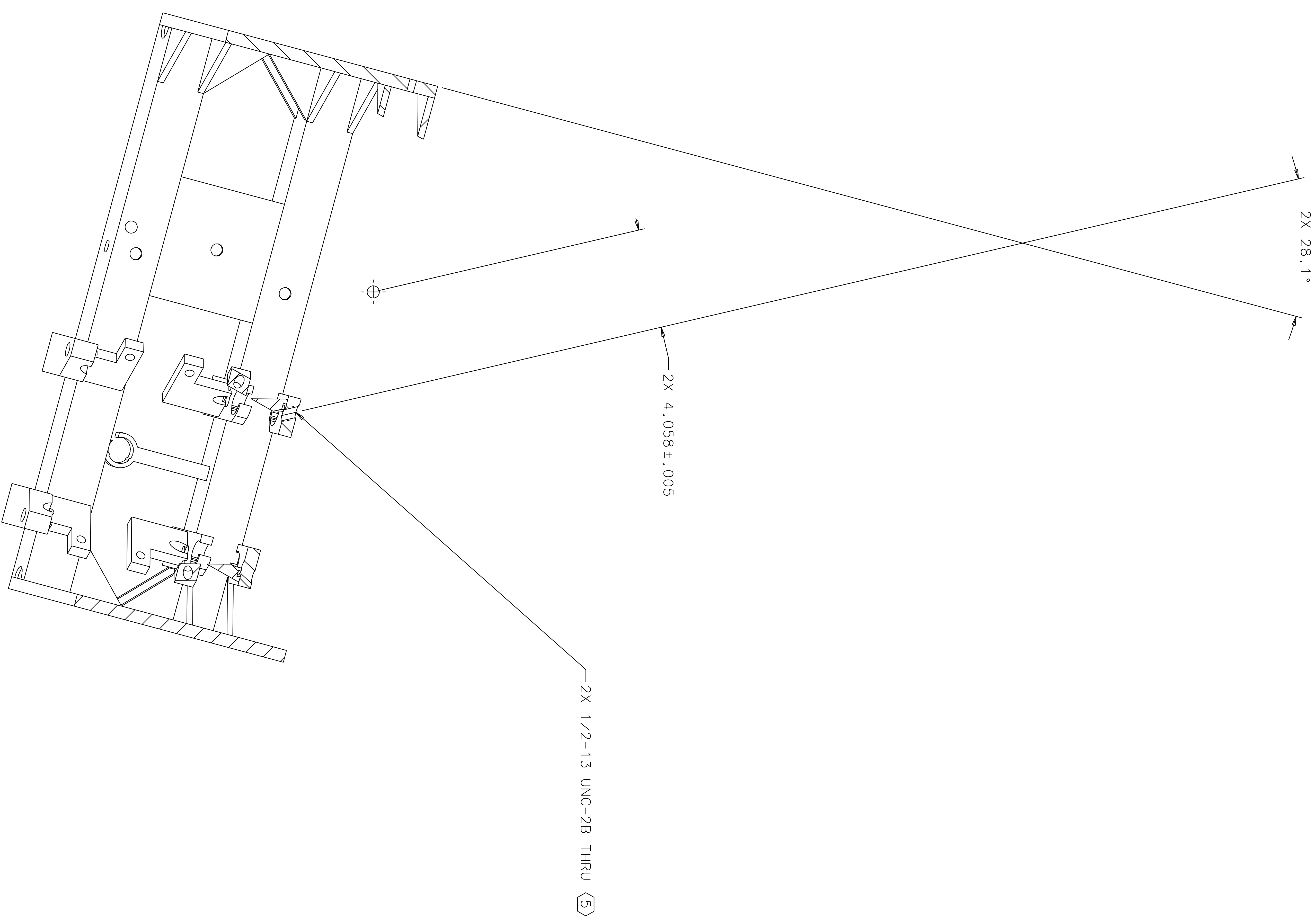
SECTION M-M



CALIFORNIA INSTITUTE OF TECHNOLOGY
MASSACHUSETTS INSTITUTE OF TECHNOLOGY

LOS3
LIGO PROJECT
STRUCTURE ASSEMBLY
(FOLDING MIRROR)

SCALE: NTS
SIZE: E
DRAWING NUMBER: D970508-C-D
SHEET: 4 OF 7

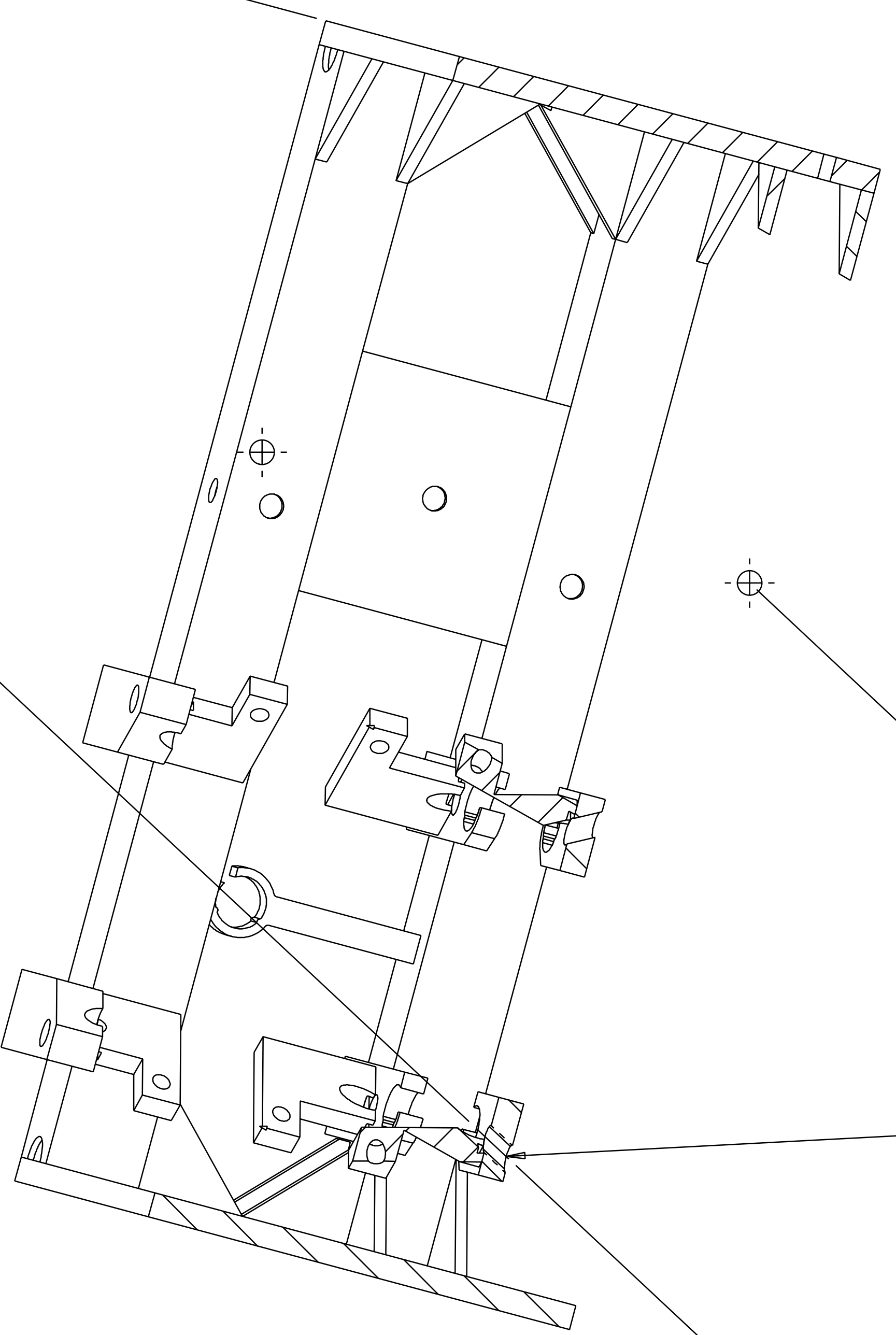


SECTION J - J (4)
 (ITEM 4 STIFFENERS REMOVED FOR CLARITY)

CALIFORNIA INSTITUTE OF TECHNOLOGY
 MASSACHUSETTS INSTITUTE OF TECHNOLOGY

LOS3
 LIGO PROJECT
 STRUCTURE ASSEMBLY
 (FOLDING MIRROR)

SCALE: NTS	SIZE	DRAWING NUMBER	SHEET
E	E	D970508-C-D	5 OF 7



11.809 ± .005

2X 1/2-13 UNC-2B THRU (5)

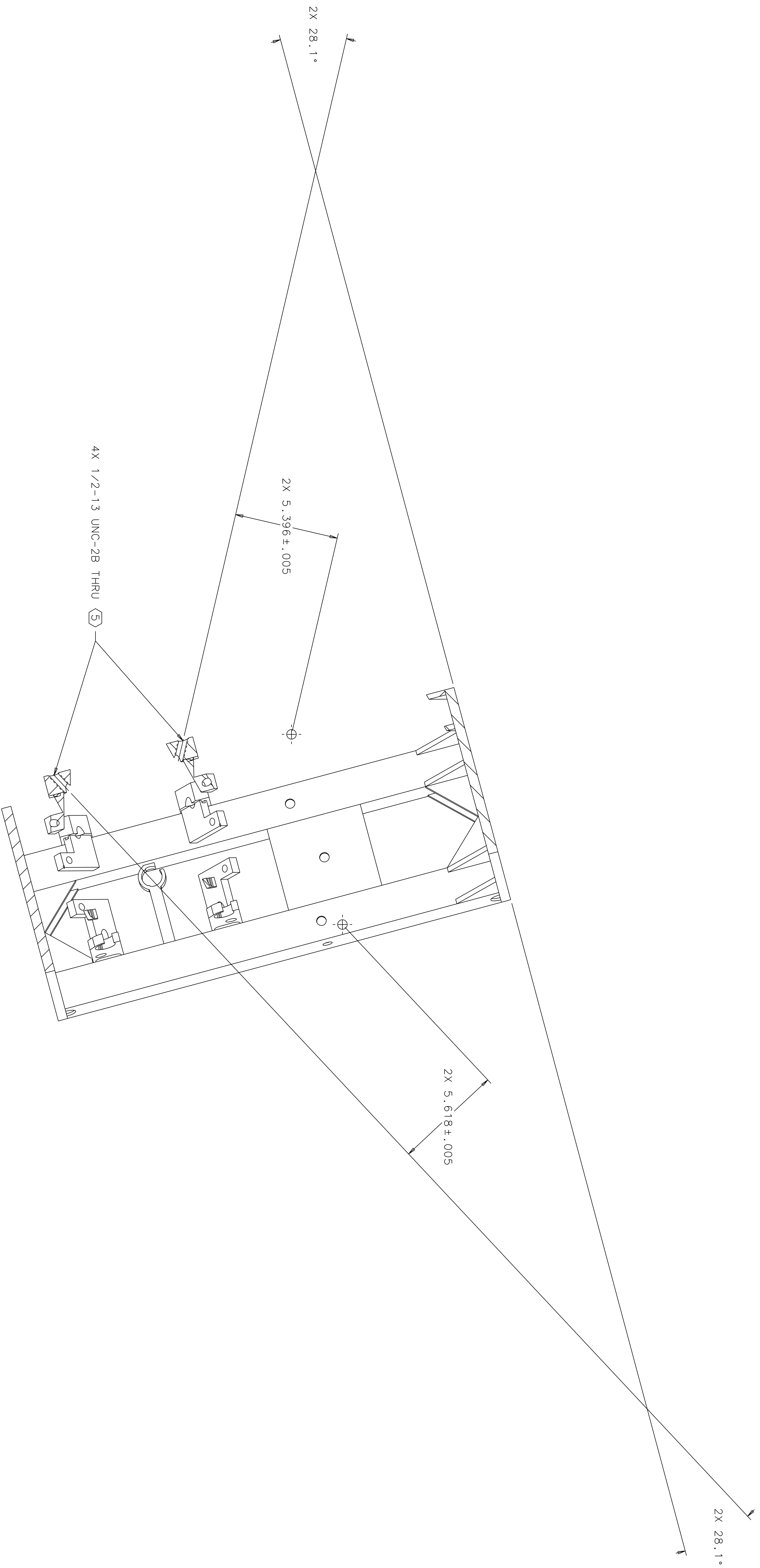
SECTION K-K [4]
 (ITEM 4 STIFFENERS REMOVED FOR CLARITY)

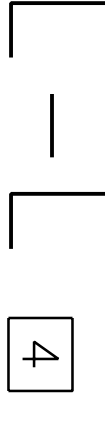
2X 28.1°

CALIFORNIA INSTITUTE OF TECHNOLOGY
 MASSACHUSETTS INSTITUTE OF TECHNOLOGY

LOS3
 LIGO PROJECT
 STRUCTURE ASSEMBLY
 (FOLDING MIRROR)

SCALE: NTS
 SIZE E
 DRAWING NUMBER D970508-C-D
 SHEET 6 OF 7



SECTION  4
 ROTATED 90° CW
 (ITEM 4 STIFFENERS REMOVED FOR CLARITY)

CALIFORNIA INSTITUTE OF TECHNOLOGY		MASSACHUSETTS INSTITUTE OF TECHNOLOGY	
LIGO PROJECT			
LOS3			
STRUCTURE ASSEMBLY (FOLDING MIRROR)			
SCALE: NTS	SIZE	DRAWING NUMBER	SHEET
E	E	D970508-C-D	7 OF 7