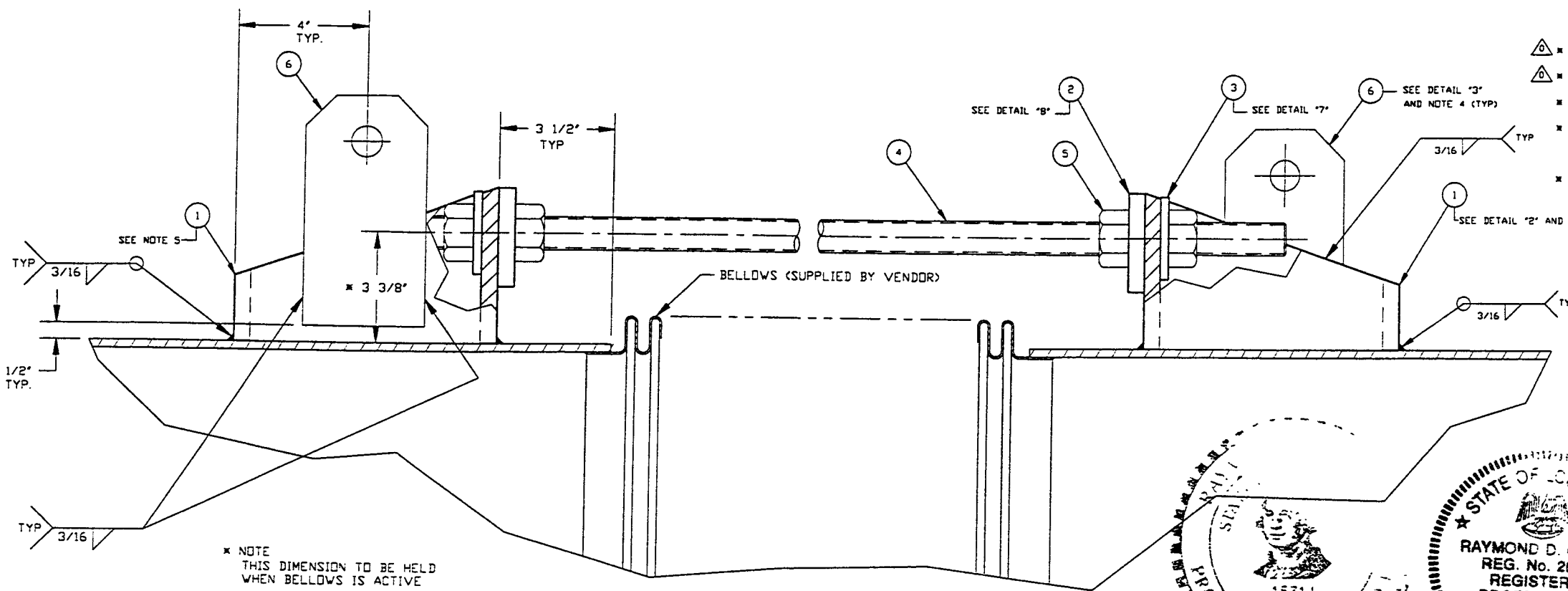
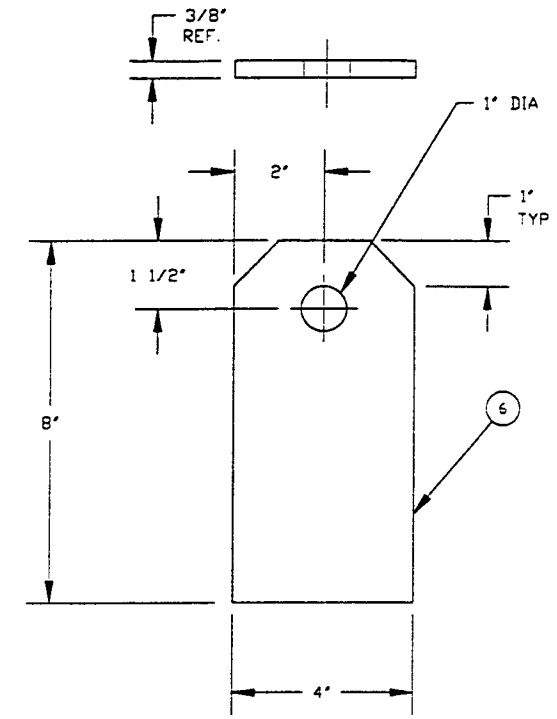
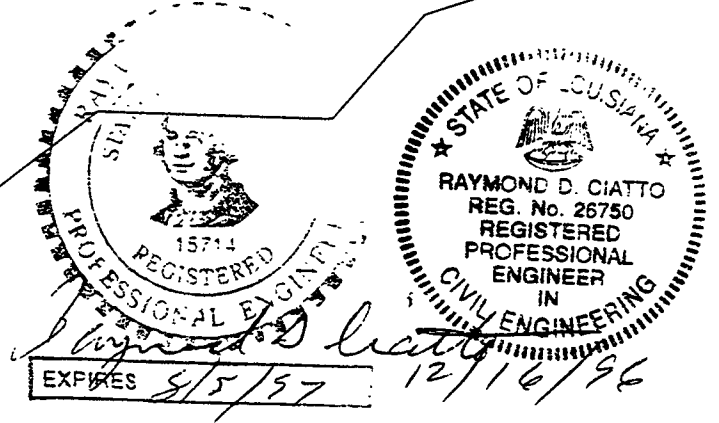


ITEM	PART NUMBER	SUFFIX	QTY	UM	DESCRIPTION
1	BY VENDDR		1	FT	TUBE STEEL, SST, 304, 1/2"x6"x8"
2			1	FT	FLAT BAR, STL, A588, 1"x3"
3			1	FT	FLAT BAR, STL, A588, 1/4"x4"
4			2	FT	ROD, THREAD, STL, A36 1/4"-7UNC
5			4	EA	NUT, HEX, STL, A325, 1/4"-7 UNC
6	BY VENDDR		1.5	FT	FLAT BAR, SST, 304, 3/8"x4"

* ELECTROLESS NICKEL PLATE

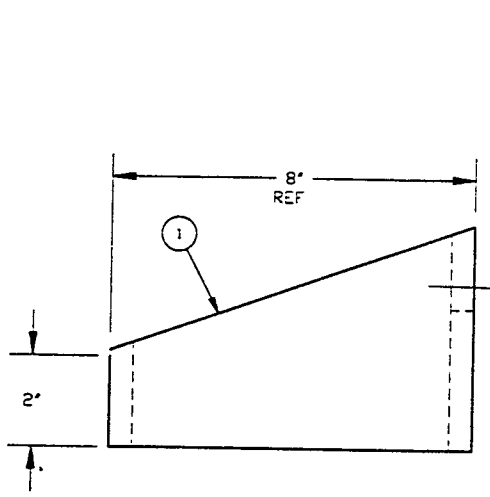


* NOTE THIS DIMENSION TO BE HELD WHEN BELLOWS IS ACTIVE

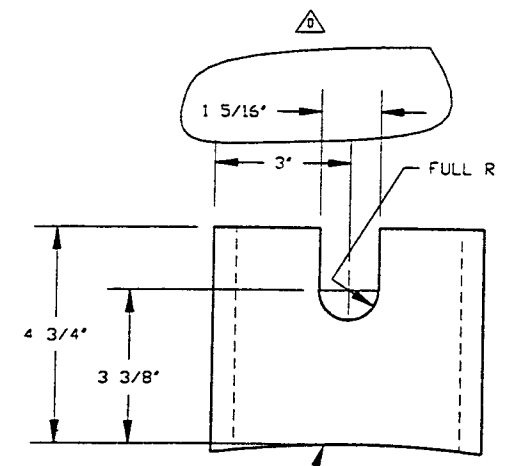


DETAIL "3"
LIFTING LUG
QTY: 2

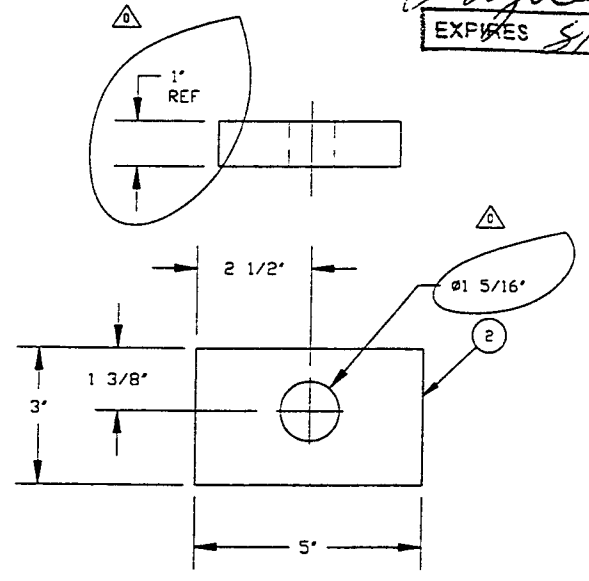
- NOTES:
1. ALL MATERIALS PROVIDED BY BELLOWS VENDDR
 2. CERTIFICATE OF COMPLIANCE REQUIRED FOR ALL MATERIAL EXCEPT ITEMS 1 & 6 REQUIRING CMTR
 3. DO NOT USE CARBON STEEL BRUSHES OR BRUSHES CONTAMINATED WITH CARBON STEEL OR STAINLESS OR ALUMINUM MATERIAL
 4. ITEM 6 REQUIRED ONLY AS SHOWN PER SPOOL ARRANGMENT DWG'S
 5. ITEM 1 MAY BE FABRICATED FROM FORMED PLATE AT VENDDR'S OPTION DESIGN SUBJECT TO PSI APPROVAL



DETAIL "2"
QTY: 2



DETAIL "8"
WASHER PLATE
QTY: 2



DETAIL "7"
WASHER PLATE
QTY: 2

<p>PROPRIETARY AND CONFIDENTIAL</p> <p>THIS DOCUMENT CONTAINS PROPRIETARY INFORMATION BELONGING TO PROCESS SYSTEMS INTERNATIONAL, INC. OR ITS AFFILIATED COMPANIES AND SHALL BE USED ONLY FOR THE PURPOSE FOR WHICH IT WAS SUPPLIED. IT SHALL NOT BE COPIED, REPRODUCED OR OTHERWISE USED, NOR SHALL SUCH INFORMATION BE FURNISHED IN WHOLE OR IN PART TO OTHERS EXCEPT IN ACCORDANCE WITH THE TERMS OF ANY AGREEMENT UNDER WHICH IT WAS SUPPLIED OR WITH THE PRIOR WRITTEN CONSENT OF PROCESS SYSTEMS INTERNATIONAL, INC. AND SHALL BE RETURNED UPON REQUEST.</p>				<p>UNLESS OTHERWISE SPECIFIED DIMENSIONS ARE IN INCHES</p> <p>TOLERANCES: FRACTIONAL: ± .01 ANGULAR: ± .01° HOLE: ± .005 THREE PLACE DECIMAL: ± .005 FINISHED SURFACE: ± .010 BREAK CORNERS: 1/16" R REMOVE ALL BURRS</p>				<p>DO NOT SCALE THIS DRAWING</p>				<p>0 RELEASED FOR FAB</p>				<p>12/3/96 C180</p>			
<p>USED ON:</p>				<p>REV:</p>				<p>DESCRIPTION:</p>				<p>CHKD: DRWN: DATE: DECD:</p>							
<p>NEXT ASS'Y:</p>				<p>ISSUE DESCRIPTION:</p>				<p>SCALE: HALF</p>				<p>SHEET: 1 OF 1</p>							

LIGO-D970445-00-V

PROCESS SYSTEMS INTERNATIONAL, INC.
20 WALKUP DR. WESTBOROUGH, MASSACHUSETTS 01581 USA

BELLOWS TIE-ROD ASSEMBLY
LIGO VACUUM EQUIPMENT

CAD FILE: V0494158
SIZE: D
DWG NO: V049-4-158
REV: 0