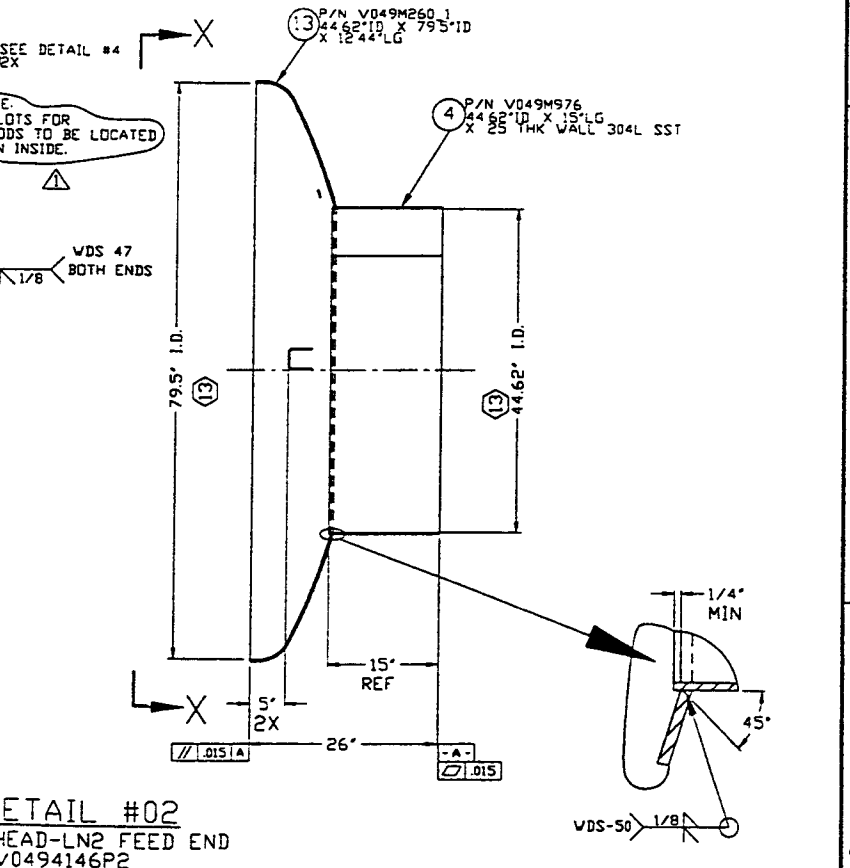
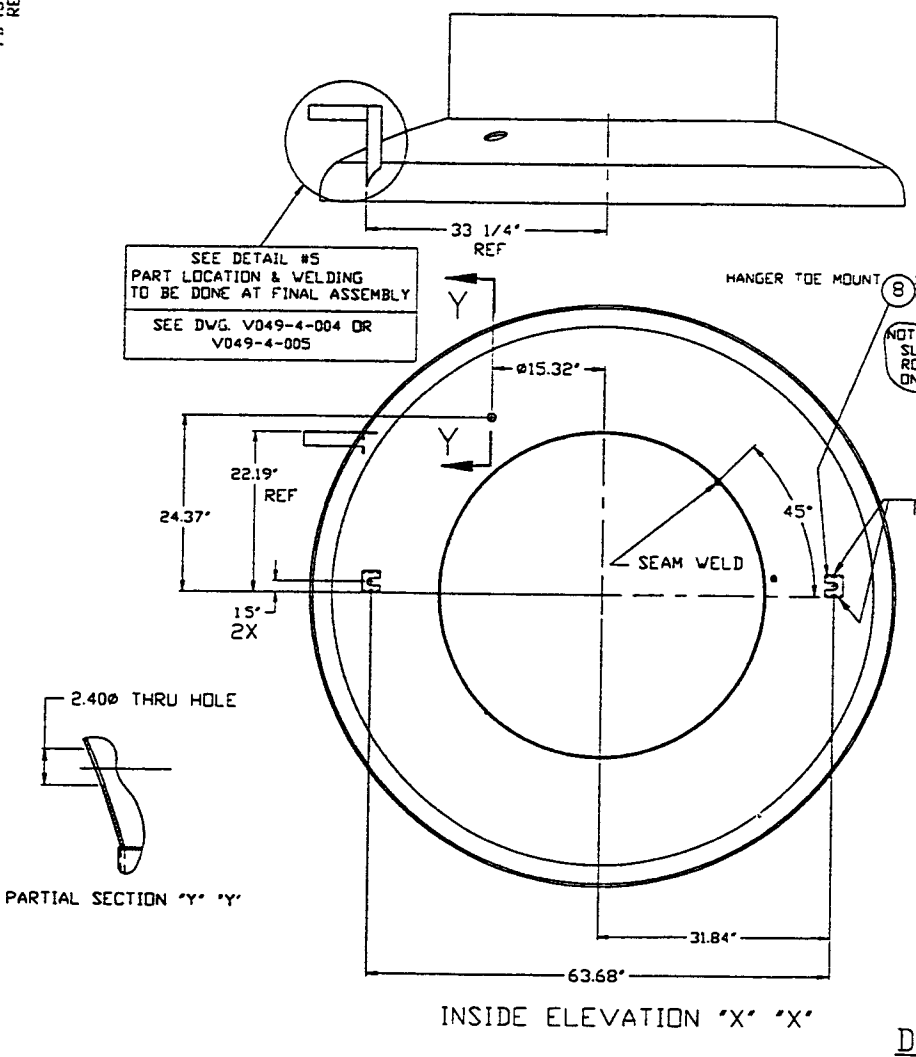
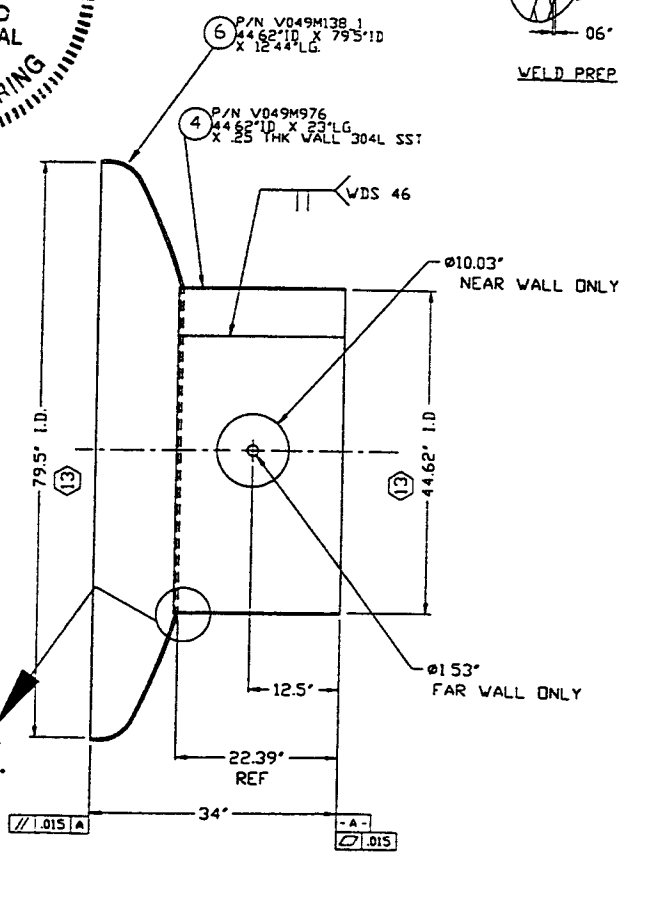
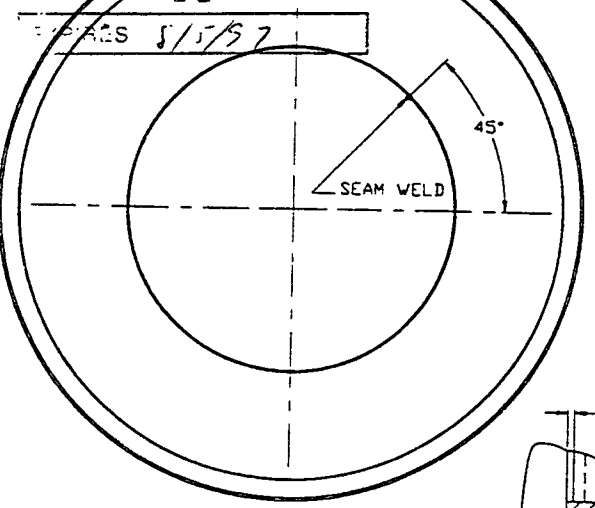


STATE OF LOUISIANA
RAYMOND D. CIATTO
 REG. No. 26750
 REGISTERED PROFESSIONAL ENGINEER
 IN CIVIL ENGINEERING



PROPRIETARY AND CONFIDENTIAL THIS DOCUMENT CONTAINS PROPRIETARY INFORMATION BELONGING TO PROCESS SYSTEMS INTERNATIONAL, INC. OR ITS AFFILIATED COMPANIES AND SHALL BE USED ONLY FOR THE PURPOSE FOR WHICH IT WAS SUPPLIED. IT SHALL NOT BE COPIED, REPRODUCED OR OTHERWISE FURNISHED IN WHOLE OR IN PART TO OTHERS EXCEPT IN ACCORDANCE WITH THE TERMS OF ANY AGREEMENT UNDER WHICH IT WAS SUPPLIED OR WITH THE PRIOR WRITTEN CONSENT OF PROCESS SYSTEMS INTERNATIONAL, INC. AND SHALL BE RETURNED UPON REQUEST.				UNLESS OTHERWISE SPECIFIED DIMENSIONS ARE IN INCHES TOLERANCES: FRACTIONAL ±.01 ANG. ±.004 HOLE ±.005 FINISHED SURFACE DIMS. ±.005 BREAK COMMENTS: DIM. OUT. REMOVE ALL BURRS				PROCESS SYSTEMS INTERNATIONAL, INC. 20 WALKUP DR. WESTBOROUGH, MASSACHUSETTS 01581 USA HEAD / NOZZLE DETAILS LONG - LEFT - / SHORT - RIGHT - LIGO VACUUM EQUIPMENT			
DO NOT SCALE THIS DRAWING USED ON: NEXT ASS'Y: DWD49-4-118/121				1 REISSUED FOR FABRICATION 0 ISSUED FOR FABRICATION REV DESCRIPTION				PV 1/21/97 0408 GS RDC DMW REC TDV 10/31/96 0324 CHKD DRWN DATE DEC'D			
DWG. NO. DESCRIPTION DVG. NO. DESCRIPTION				CAD FILE V0494146				SIZE D V049-4-146 SHEET 1 OF 1			