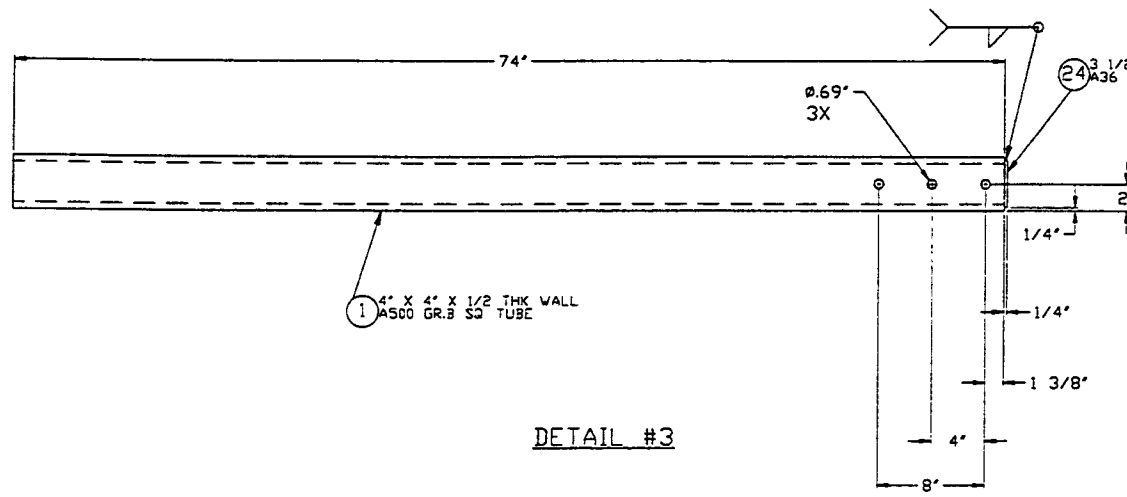
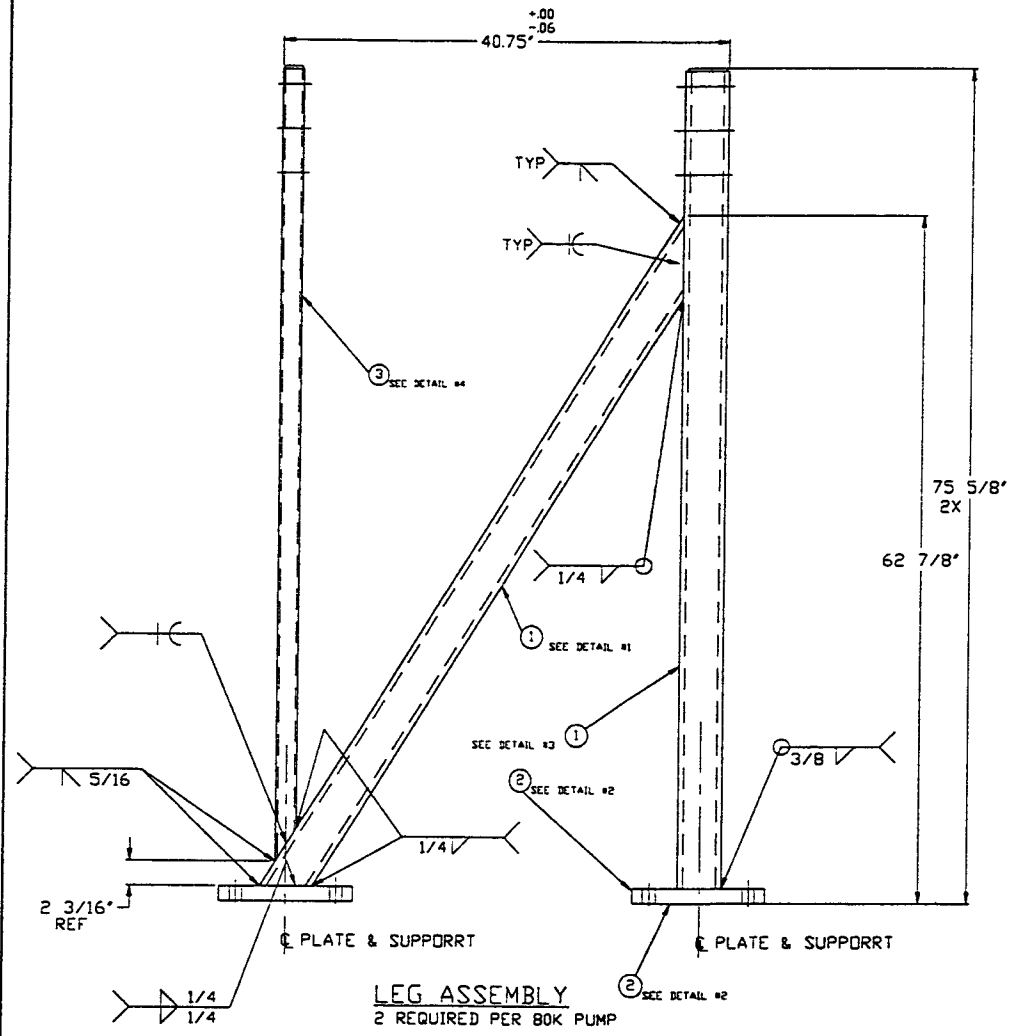
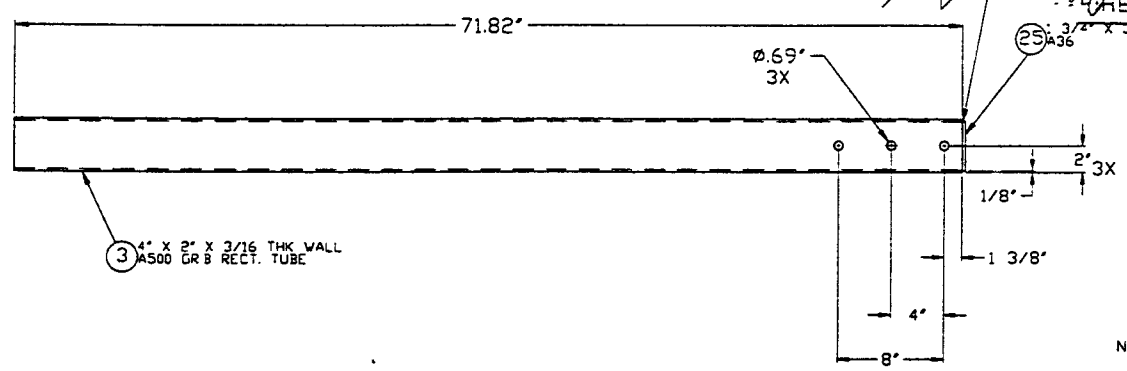
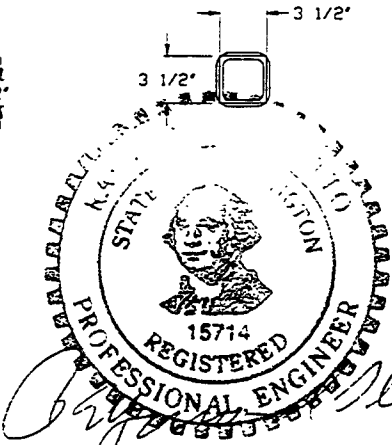


DETAIL #1
 1 4" X 4" X 1/2 THK WALL
 A500 GR B SQ TUBE / 2X

DETAIL #2
 2 12" X 12" X 1 3/8" THK
 A36
 2X



DETAIL #3



DETAIL #4

APPROX. ASSEMBLY WEIGHT = 413#

- NOTES:
 1) FABRICATION TO BE IN ACCORDANCE WITH SPEC V049-2-139
 2) PIECE MARK EACH FINISHED LEG ASSEMBLY WITH "V0494141".

PROPRIETARY AND CONFIDENTIAL THIS DOCUMENT CONTAINS PROPRIETARY INFORMATION BELONGING TO PROCESS SYSTEMS INTERNATIONAL, INC OR ITS AFFILIATED COMPANIES AND SHALL BE USED ONLY FOR THE PURPOSE FOR WHICH IT WAS SUPPLIED. IT SHALL NOT BE COPIED, REPRODUCED OR OTHERWISE USED NOR SHALL ANY INFORMATION BE FURNISHED IN WHOLE OR IN PART TO OTHERS EXCEPT IN ACCORDANCE WITH THE WRITTEN CONSENT OF PROCESS SYSTEMS INTERNATIONAL, INC. AND SHALL BE RETURNED UPON REQUEST.				UNLESS OTHERWISE SPECIFIED DIMENSIONS ARE IN INCHES TOLERANCES: FRACTIONAL = 01 ANGULAR-MACH 20-30° BEND ±2° TWO PLACE DECIMAL = ±.03 THREE PLACE DECIMAL = ±.015 FINISHED SURFACE RNS BREAK CORNERS IN REMOVE ALL BURRS				PROCESS SYSTEMS INTERNATIONAL INC. 20 WALKUP DR. WESTBOROUGH, MASSACHUSETTS 01581 USA					
DO NOT SCALE THIS DRAWING 0 ISSUED FOR FABRICATION USED ON: REV DESCRIPTION NEXT ASS'Y: DV049-4-005				PV 10/28/96 0325 CHKD: DRWN: DATE: D.L.#				80K PUMP LEG ASS'Y-SHORT LIGO VACUUM EQUIPMENT					
DWG NO	DESCRIPTION	DWG NO	DESCRIPTION	SCALE	NONE	SHEET	1 OF 1	CAD FILE	V0494141	DWG NO	V049-4-141	REV	0
REFERENCE DRAWINGS				ISSUE DESCRIPTION				LIGO-D970438-00-V					