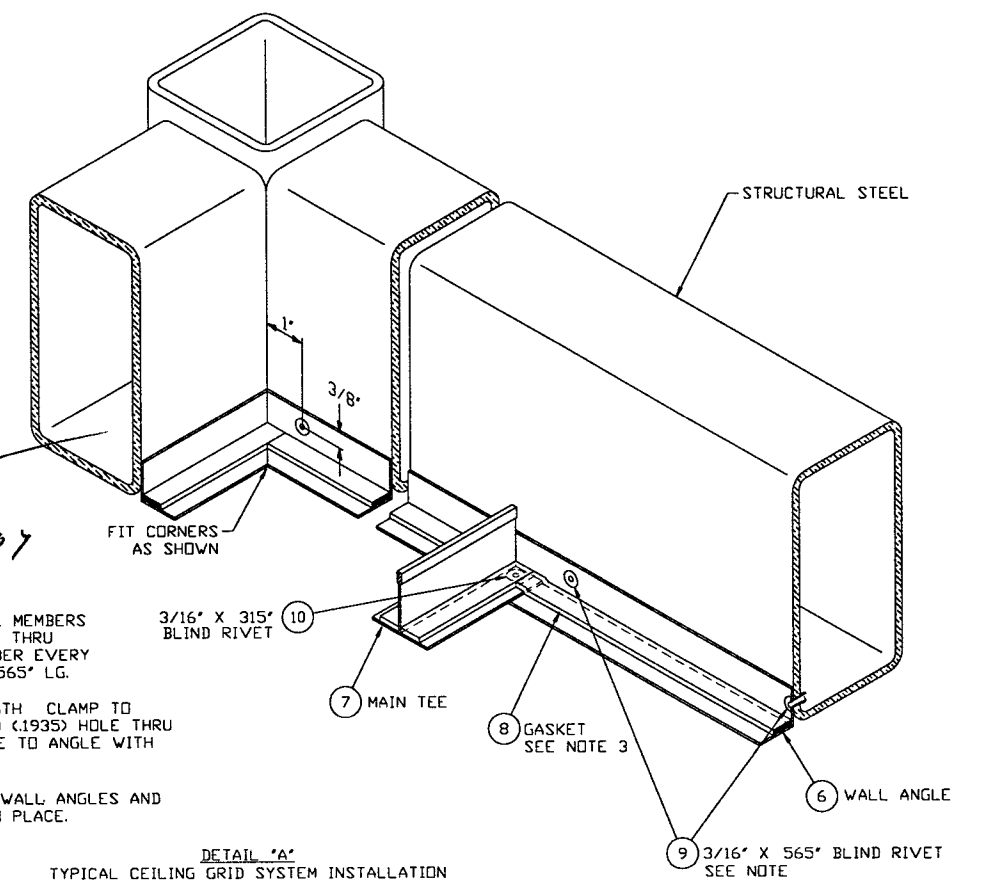
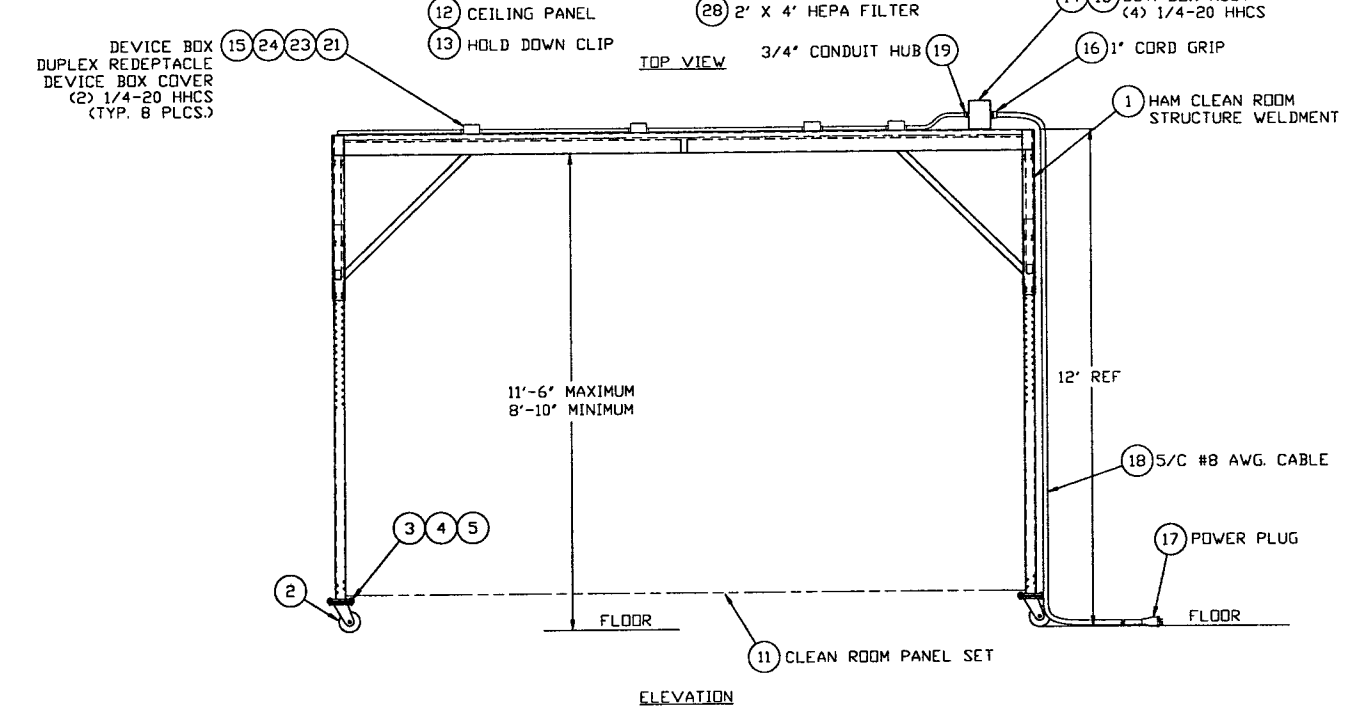
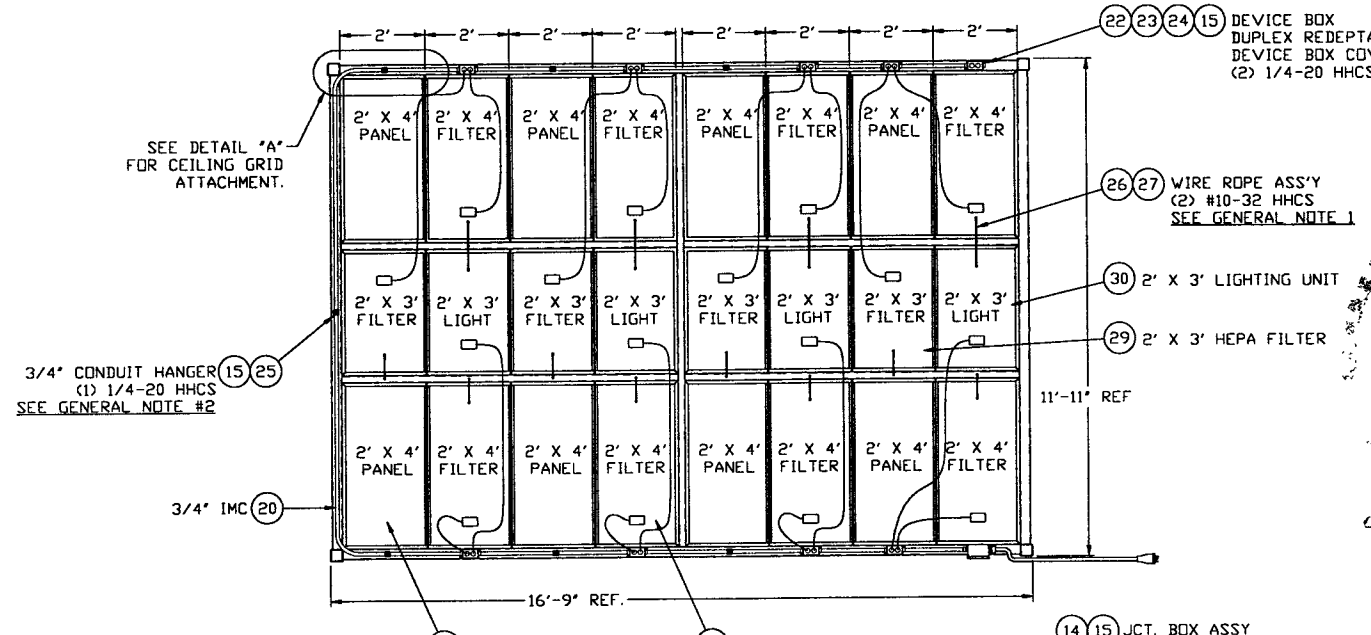


Raymond D. Ciatto
11/2/97
6/5/97



- NOTES:
- 1) CLAMP WALL ANGLE TO STRUCTURAL MEMBERS AS SHOWN. DRILL #10 (1935) HOLE THRU WALL ANGLE AND STRUCTURAL MEMBER EVERY 8" ATTACH ANGLE WITH 3/16" X .565" LG. BLIND RIVET.
 - 2) LOCATE MAIN TEE'S & CUT TO LENGTH CLAMP TO WALL ANGLE AS SHOWN. DRILL #10 (1935) HOLE THRU WALL ANGLE AND TEE. ATTACH TEE TO ANGLE WITH 3/16" X .315" LG BLIND RIVET BLIND RIVET.
 - 3) INSTALL GASKET AS SHOWN AFTER WALL ANGLES AND MAIN TEE'S HAVE BEEN RIVETED IN PLACE.

- GENERAL NOTES:
- 1) ATTACH ALL FILTERS AND LIGHTING PANELS TO STRUCTURAL STEEL WITH ITEM #26 WIRE ROPE ASSEMBLIES PROVIDED DRILL & TAP #10-32 HOLE IN FILTER & LIGHTING PANEL AS REQUIRED TO ATTACH WIRE ROPE SEAL ATTACHMENT TO FILTER WITH RTV SEALANT.
 - 2) SUPPORT 3/4" IMC CONDUIT FROM STRUCTURAL STEEL AS REQUIRED USING ITEM #25 3/4" CONDUIT HANGER.

Raymond D. Ciatto PE-WA

0970434-00-V

ITEM	PART NUMBER	QTY	U/M	DESCRIPTION	ITEM	PART NUMBER	QTY	U/M	DESCRIPTION
30	V0492142-P3	4	EA	2' X 3' LIGHTING PANEL, 277VAC PER SPEC V049-2-142	15	B0521043	31	EA	HHCS, 1/4-20 X 3/4" LG
29	V0492142-P2	4	EA	2' X 3' HEPA FILTER/BLOWER, 277VAC PER SPEC V049-2-142	14	V0493039	1	EA	ASSY, JUNCTION FUSE BOX, CLEAN ROOM HORIZONTAL ACCESS MODULE
28	V0492142-P1	8	EA	2' X 4' HEPA FILTER/BLOWER, 277VAC PER SPEC V049-2-142	13	V59049E029	16	EA	CLEAN ROOM GRID, HOLD DOWN CLIP CEILING PANEL
27	B0529852	64	EA	HHCS, #10-32 X 1/2" LG	12	V59049E028	8	EA	CEILING PANEL, 2' X 4' X 1/2", WHITE CLASS 100 CLEAN ROOM
26	V59049E033	16	EA	WIRE ROPE ASSY, 1/16" DIA EYE BOTH ENDS 18" LG, 95 LBS CAP.	11	V0492144	1	EA	CLEAN ROOM SOFTWALL PANEL SET, HAM PER SPEC V049-2-144
25	0829437	7	EA	CONDUIT, 3/4" HANGER	10	V59049E027	72	EA	RIVET, BLIND, 3/16" X .315, ST STEEL 063 TO 125 GRIP RANGE
24	V59049E041	9	EA	COVER, DEVICE BOX, DUPLEX RECEPTACLE SINGLE GANG	9	V59049E026	192	EA	RIVET, BLIND, 3/16" X .565, ST STEEL 251 TO 375 GRIP RANGE
23	V59049E040	9	EA	RECEPTACLE, DUPLEX 15A 277VAC NEMA L7-15R, TWISTLOCK	8	V59049E025	210	FT	GASKET, ADHESIVE, 1/2" X 1/4" THK BLACK NEOPRENE
22	V59049E039	1	EA	DEVICE BOX, SINGLE GANG, (1) 3/4" HUBS ALUMINUM W/ MNTG LUGS	7	V59049E024	66	FT	CLEAN ROOM GRID, 1 1/2" MAIN TEE NO GASKET, WHITE
21	V59049E032	8	EA	DEVICE BOX, SINGLE GANG, (2) 3/4" HUBS ALUMINUM W/ MNTG LUGS	6	V59049E023	140	FT	CLEAN ROOM GRID, 1" WALL ANGLE NO GASKET, WHITE
20	0829432	4	FT	CONDUIT, 3/4", IMC	5	B0520654	16	EA	1/2"-13 HEX NUT
19	300578	1	EA	CONDUIT HUB, 3/4"	4	B0521632	16	EA	1/2" FLAT WASHER
18	202190	25	FT	CABLE, 5/8" #8 AWG, TYPE SD 90°C, 600VAC	3	B0521063	16	EA	HHCS, 1/2"-13 X 2" LG
17	V59049E030	1	EA	MALE PLUG, TWIST-LOCK, 60A 3 PH 1Y 277/480VAC	2	V59049E022	4	EA	CASTER, 6" DIA X 3" W/BRAKE 1800 LBS CAP
16	V59049E031	1	EA	CORD GRIP, 1" NPT, ALUMINUM B75 - 100 DIA GRIP	1	V0494137	1	EA	STRUCTURE WELDMENT, CLEAN ROOM HORIZONTAL ACCESS MODULE

PROPRIETARY AND CONFIDENTIAL
THIS DOCUMENT CONTAINS PROPRIETARY INFORMATION BELONGING TO PROCESS SYSTEMS INTERNATIONAL, INC OR ITS AFFILIATED COMPANIES AND SHALL BE USED ONLY FOR THE PURPOSE FOR WHICH IT WAS SUPPLIED. IT SHALL NOT BE COPIED, REPRODUCED OR OTHERWISE USED, NOR SHALL SUCH INFORMATION BE FURNISHED IN WHOLE OR IN PART TO OTHERS EXCEPT IN ACCORDANCE WITH THE TERMS OF ANY AGREEMENT UNDER WHICH IT WAS SUPPLIED OR WITH THE PRIOR WRITTEN CONSENT OF PROCESS SYSTEMS INTERNATIONAL, INC AND SHALL BE RETURNED UPON REQUEST.

DWG NO	DESCRIPTION	DWG NO	DESCRIPTION
7	REFERENCE DRAWINGS	6	
8		5	
		4	
		3	
		2	
		1	

DO NOT SCALE THIS DRAWING	ISSUED FOR FAB/INFO.	CHKD	DRWN	DATE	DESP
0				11/26/96	
USED ON	REV	DESCRIPTION	ISSUE DESCRIPTION	SCALE	1"=2'
NEXT ASS'Y				SHEET	1 OF 1

PROCESS SYSTEMS INTERNATIONAL, INC.
20 WALKUP DR. WESTBOROUGH, MASSACHUSETTS 01581 USA

CLEAN ROOM ASSEMBLY
HORIZONTAL ACCESS MODULE

LIGO VACUUM EQUIPMENT

CAD FILE: V0494136
SIZE: D
DWG NO: V049-4-136
REV: 0

Nov 26, 1996 09:29:34