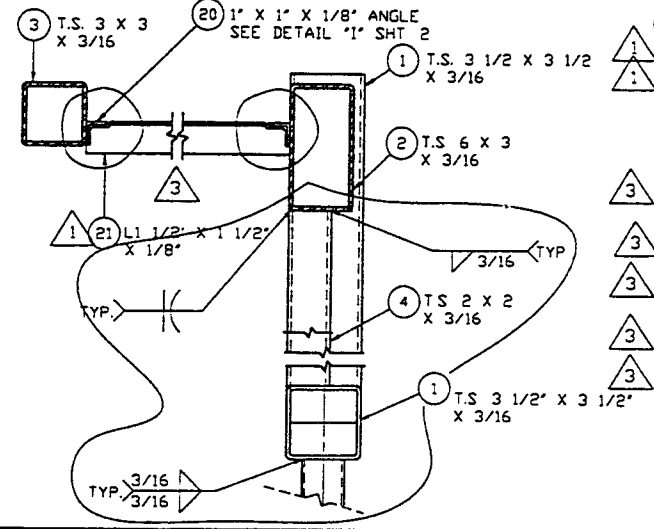


NOTES:  
 1) STEEL CONSTRUCTION SHALL CONFORM TO THE AISC SPECIFICATION FOR THE DESIGN, FABRICATION AND ERECTION OF STRUCTURAL STEEL.  
 2) WELDING OF STEEL SHALL BE IN ACCORDANCE WITH AWS D11.  
 3) FABRICATOR SHALL SAND BLAST ALL EXPOSED SURFACES IN ACCORDANCE WITH SSPC-SP-6.  
 4) STEEL SHALL BE PAINTED WITH WHITE EPOXY POLYMER. ALL SURFACES SHALL BE CLEAN AND FREE OF LOOSE SCALE, CLEAN AND PRIME IN ACCORDANCE WITH MANUFACTURER'S INSTRUCTIONS.  
 5) ALUMINUM CONSTRUCTION SHALL CONFORM TO THE ALUMINUM ASSOCIATION SPECIFICATIONS FOR ALUMINUM STRUCTURES.  
 6) APPROXIMATE WEIGHT 2900 LBS.

NOTES:  
 7) ALL SIDES OF TUBE STEEL CONNECTIONS SHALL BE WELDED USING FILLET WELDS FLARE GROOVE WELDS OR FULL PENETRATIONS WELDS AS REQUIRED. GRIND OFF SHARP ENDS OF DIAGONAL CUTS THE SAME AMOUNT AS THE MEMBER THICKNESS.



ITEM	QTY	DESCRIPTION
23	16	5/8"-11 HEX NUT
22	16	5/8" FLAT WASHER
21	60 FT	ANGLE, 1 1/2" X 1 1/2" X 1/8", A36
20	160 FT	ANGLE, 1" X 1" X 1/8", A36
19	28 FT	FLAT BAR, 1" W X 1/8" THK, A36
18	16	3/8"-16 X 4 1/2" LG. HEX HEAD BOLT, A-307
17	16	1/2"-13 X 8 1/2" LG. THREADED ROD
16	16	3/8" FLAT WASHER
15	16	3/8"-16 HEX NUT
14	8	5/8"-11 X 5" LG. HEX HEAD BOLT, A-307
13	8	5/8"-11 X 4 1/2" LG. HEX HEAD BOLT, A-307
12	32	1/2" FLAT WASHER
11	32	1/2"-13 HEX NUT
10	25 FT	PLATE 1/2" THK X 6 1/8" W, ALUMINUM, 6061-T6
9	16	LOCK WASHER, 1/2"
8	7 FT	PLATE, 1/4" THK X 3" W, A36
7	12 FT	PLATE, 1/4" THK X 2 3/4" W, A36
6	362 FT	TUBE, 3" X 3" X 3/16" W.T., ALUMINUM, 6061-T6
5	2 FT	PLATE, 1/2" THK X 2" W, A36
4	215 FT	TUBE STEEL, 2" X 2" X 3/16" W.T., A500 GR B
3	23 FT	TUBE STEEL, 3" X 3" X 3/16" W.T., A500 GR B
2	108 FT	TUBE STEEL, 6" X 3" X 3/16" W.T., A500 GR B
1	100 FT	TUBE STEEL, 3 1/2" X 3 1/2" X 3/16" W.T., A500 GR B

PROPRIETARY AND CONFIDENTIAL  
 THIS DOCUMENT CONTAINS PROPRIETARY INFORMATION BELONGING TO PROCESS SYSTEMS INTERNATIONAL, INC. OR ITS AFFILIATED COMPANIES AND SHALL BE USED ONLY FOR THE PURPOSE FOR WHICH IT WAS SUPPLIED. IT SHALL NOT BE COPIED, REPRODUCED OR OTHERWISE USED, NOR SHALL SUCH INFORMATION BE FURNISHED IN WHOLE OR IN PART TO OTHERS EXCEPT IN ACCORDANCE WITH THE TERMS OF ANY AGREEMENT UNDER WHICH IT WAS SUPPLIED. IF WITH THE PRIOR WRITTEN CONSENT OF PROCESS SYSTEMS INTERNATIONAL, THE INFO SHALL BE RETURNED UPON REQUEST.

DWG NO.	DESCRIPTION	DWG NO.	DESCRIPTION

UNLESS OTHERWISE SPECIFIED DIMENSIONS ARE IN INCHES  
 TOLERANCES:  
 FUNCTIONAL ± 0.1  
 ANGULAR APPROX ± 30°  
 TWO PLACE DECIMAL ± 0.03  
 THREE PLACE DECIMAL ± 0.005  
 FURNISHED SURFACE FINISH SHALL BE AS SHOWN OR REMOVE ALL SURFACES  
 DO NOT SCALE THIS DRAWING  
 USED ON  
 NEXT ASS'Y: V0494133

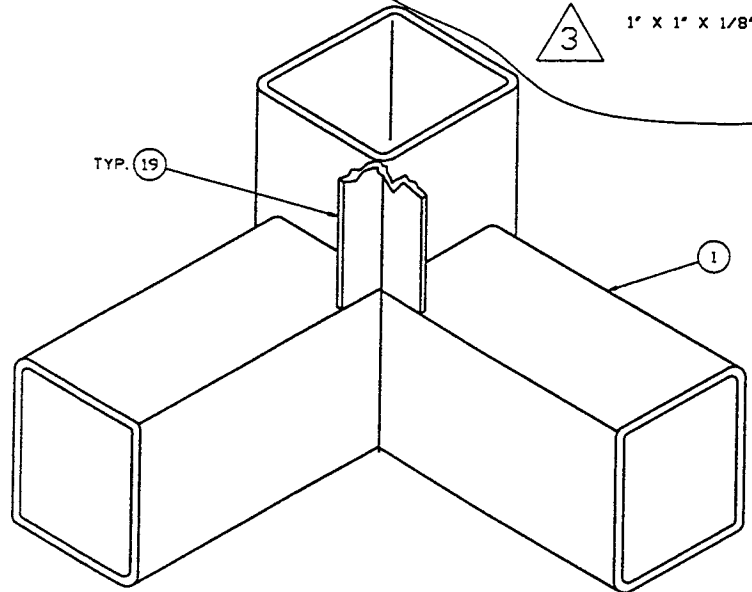
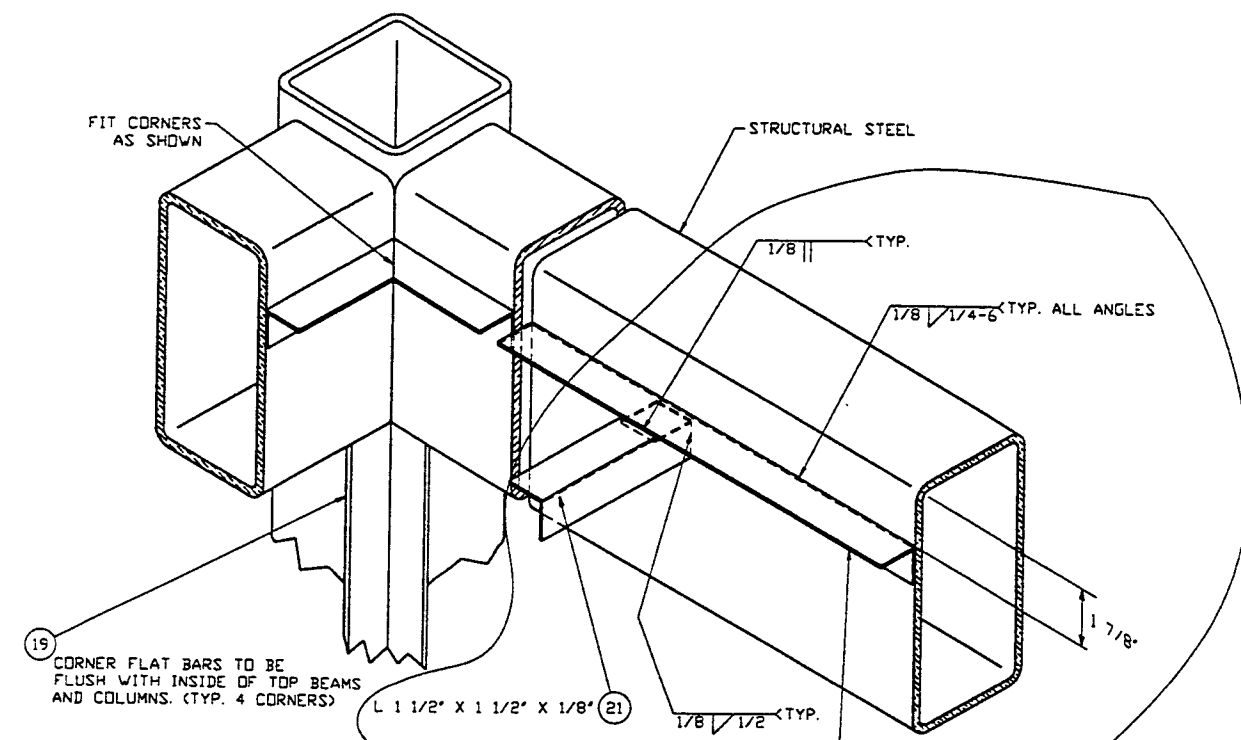
REV	DESCRIPTION	CHKD	DRWN	DATE	DEDR
3	REISSUED FOR FABRICATION AS NOTED			5/20/97	0489
2	REISSUED FOR FABRICATION AS NOTED			5/7/97	0482
1	REISSUED FOR FABRICATION AS NOTED			4/5/97	0448
0	ISSUED FOR FABRICATION			3/8/96	

PROCESS SYSTEMS INTERNATIONAL, INC.  
 20 WALKUP DR. WESTBOROUGH, MASSACHUSETTS 01581 USA

BSC CLEAN ROOM WELDMENT  
 STYLE NO. 1 & 3

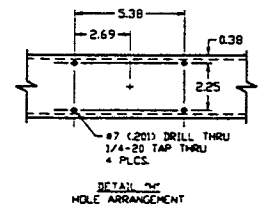
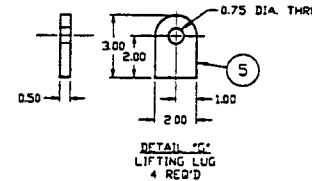
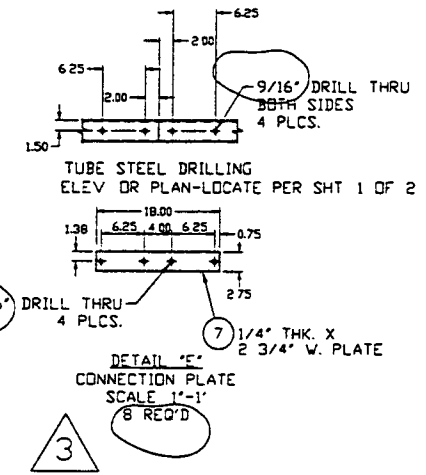
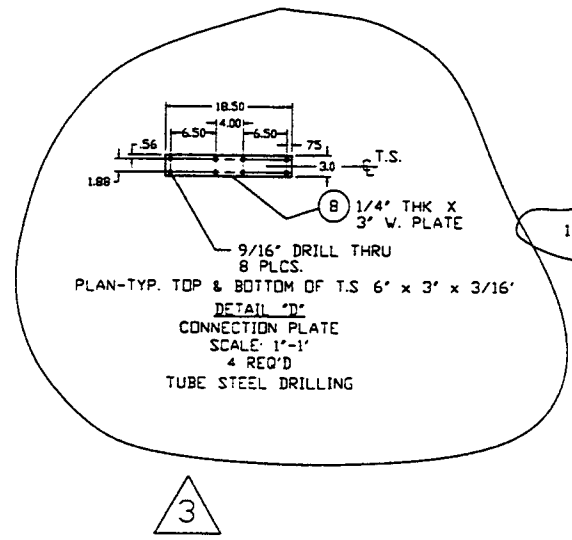
LIGO VACUUM EQUIPMENT

CAS FILE: 413451  
 SIZE: DWG NO: V049-4-134  
 SHEET: 1 OF 2



DETAIL "1"  
TYPICAL CORNER CEILING GRID SYSTEM INSTALLATION

NOTES:  
 1) CLAMP ANGLE TO STRUCTURAL MEMBERS AS SHOWN. WELD IN PLACE AS SHOWN.  
 2) LOCATE FLAT BAR & CUT TO LENGTH. DIMENSIONS ARE TAKEN TO CENTER OF FLAT BAR CLAMP FLAT BAR TO ANGLE & WELD IN PLACE.



PROCESS SYSTEMS INTERNATIONAL INC. 20 WALKUP DR. WESTBOROUGH, MASSACHUSETTS 01581 USA			
BSC CLEAN ROOM WELDMENT STYLE NO 1 & 3			
LIGO VACUUM EQUIPMENT			
CAD FILE 413452	SIZE D	DWG NO. V049-4-134	REV 3
SCALE 1"=2'		SHEET 2 OF 2	

REV 03, 1997 - 161419