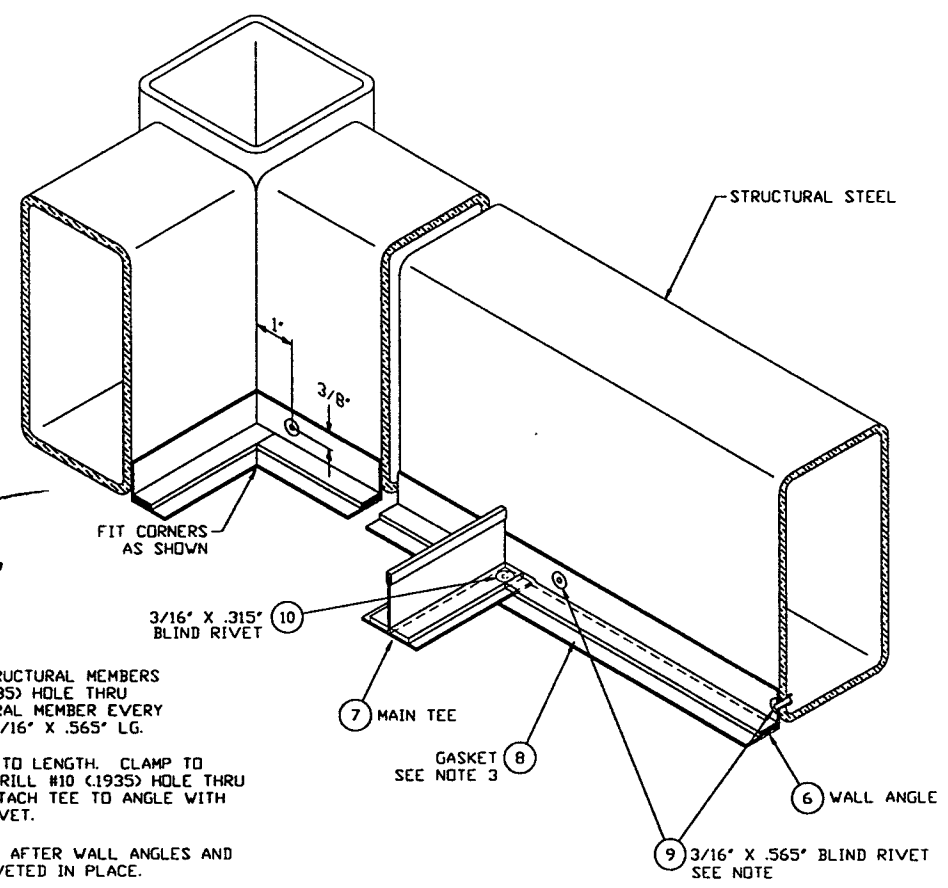


RAYMOND D. CLATTO
 REG. NO. 2675
 REGISTERED PROFESSIONAL ENGINEER
 IN CIVIL ENGINEERING
 STATE OF WASHINGTON
 15714

8/7/97
 11/2/97



- NOTES:
- 1.) CLAMP WALL ANGLE TO STRUCTURAL MEMBERS AS SHOWN. DRILL #10 (.1935) HOLE THRU WALL ANGLE AND STRUCTURAL MEMBER EVERY 8". ATTACH ANGLE WITH 3/16" X .565" LG. BLIND RIVET.
 - 2.) LOCATE MAIN TEE'S & CUT TO LENGTH. CLAMP TO WALL ANGLE AS SHOWN. DRILL #10 (.1935) HOLE THRU WALL ANGLE AND TEE. ATTACH TEE TO ANGLE WITH 3/16" X .315" LG. BLIND RIVET.
 - 3.) INSTALL GASKET AS SHOWN AFTER WALL ANGLES AND MAIN TEE'S HAVE BEEN RIVETED IN PLACE.

RAYMOND D. CLATTO P.E. - WA.

DETAIL 'A'
 TYPICAL CEILING GRID SYSTEM INSTALLATION

09770431-00-V

- GENERAL NOTES:
- 1.) ATTACH ALL FILTERS AND LIGHTING PANELS TO STRUCTURAL STEEL WITH ITEM #26 WIRE ROPE ASSEMBLIES PROVIDED. DRILL & TAP #10-32 HOLE IN FILTER & LIGHTING PANEL AS REQUIRED TO ATTACH WIRE ROPE. SEAL ATTACHMENT TO FILTER WITH RTV SEALANT.
 - 2.) SUPPORT 3/4" IMC CONDUIT FROM STRUCTURAL STEEL AS REQUIRED USING ITEM #25 3/4" CONDUIT HANGER.

ITEM	PART NUMBER	QTY	U/L/H	DESCRIPTION	ITEM	PART NUMBER	QTY	U/L/H	DESCRIPTION
30	V0492142-P3	6	EA	2' X 3' LIGHTING PANEL 277VAC PER SPEC V049-2-142	15	B0521043	31	EA	HHCS, 1/4-20 X 3/4" LG.
29	V0492142-P2	20	EA	2' X 3' HEPA FILTER/BLOVER, 277VAC PER SPEC V049-2-142	14	V0493039	1	EA	ASSY, JUNCTION FUSE BOX CLEAN ROOM HORIZONTAL ACCESS MODULE
28	V59049E042	1	EA	COVER, DEVICE BOX, BLANK SINGLE GANG	13	EP76TL	4	EA	WIRE NUT, RED, #4-#12
27	B0529852	52	EA	HHCS, #10-32 X 1/2" LG.	12	200802	1	EA	CONDUIT UNION, 3/4", THREE PIECE
26	V59049E033	26	EA	WIRE ROPE ASSY, 1/16" DIA. EYE BOTH ENDS 18" LG, 96 LBS CAP.	11	V0492145	1	EA	CLEAN ROOM SOFTWARE PANEL SET, BSC PER SPEC V049-2-145
25	0829437	4	EA	CONDUIT, 3/4" HANGER	10	V59049E027	80	EA	RIVET, BLIND, 3/16" X .315, ST. STEEL .063 TO .125 GRIP RANGE
24	V59049E041	16	EA	COVER, DEVICE BOX, DUPLEX RECEPTACLE SINGLE GANG	9	V59049E026	210	EA	RIVET, BLIND, 3/16" X .565, ST. STEEL .251 TO .375 GRIP RANGE
23	V59049E040	16	EA	RECEPTACLE, DUPLEX, 15A 277VAC NEMA L7-15R, TWISTLOCK	8	V59049E025	200	FT	GASKET, ADHESIVE, 1/2" X 1/4" THK BLACK NEOPRENE
22	V59049E039	1	EA	DEVICE BOX, SINGLE GANG, (1) 3/4" HUBS ALUMINUM W/ MNTG LUGS	7	V59049E024	60	FT	CLEAN ROOM GRID, 1 1/2" MAIN TEE NO GASKET, WHITE
21	V59049E032	16	EA	DEVICE BOX, SINGLE GANG, (2) 3/4" HUBS ALUMINUM W/ MNTG LUGS	6	V59049E023	140	FT	CLEAN ROOM GRID, 1" WALL ANGLE NO GASKET, WHITE
20	0829432	54	FT	CONDUIT, 3/4", IMC	5	B0520654	16	EA	1/2"-13 HEX NUT
19	300578	1	EA	CONDUIT HUB, 3/4"	4	B0521632	16	EA	1/2" FLAT WASHER
18	202190	30	FT	CABLE, 5/8" #8 AVG. TYPE 50 90°C, 600VAC	3	B0521063	16	EA	HHCS, 1/2"-13 X 2" LG.
17	V59049E030	1	EA	MALE PLUG, TWIST-LOCK, 60A 3 PH. 277/480VAC	2	V59049E022	4	EA	CASTER, 6" DIA. X 3" W/BRAKE 1800 LBS. CAP.
16	V59049E031	1	EA	CORD GRIP, 1" NPT, ALUMINUM .875 - 1.00 DIA. GRIP	1	V0494134	1	EA	STRUCTURE WELDMENT, CLEAN ROOM BEAM SPLITTER CHAMBER

DWG. NO.	DESCRIPTION	DWG. NO.	DESCRIPTION
7	REFERENCE DRAWINGS	6	
5		5	
4		4	
3		3	
2		2	
1		1	

PROPRIETARY AND CONFIDENTIAL
 THIS DOCUMENT CONTAINS PROPRIETARY INFORMATION BELONGING TO PROCESS SYSTEMS INTERNATIONAL, INC. OR ITS AFFILIATED COMPANIES AND SHALL BE USED ONLY FOR THE PURPOSE FOR WHICH IT WAS SUPPLIED. IT SHALL NOT BE COPIED, REPRODUCED OR OTHERWISE USED, NOR SHALL SUCH INFORMATION BE FURNISHED IN WHOLE OR IN PART TO OTHERS EXCEPT IN ACCORDANCE WITH THE TERMS OF ANY AGREEMENT UNDER WHICH IT WAS SUPPLIED OR WITH THE PRIOR WRITTEN CONSENT OF PROCESS SYSTEMS INTERNATIONAL, INC. AND SHALL BE RETURNED UPON REQUEST.

UNLESS OTHERWISE SPECIFIED DIMENSIONS ARE IN INCHES
 TOLERANCES:
 FRACTIONAL & DECIMAL: .0005" - .001" .001" - .005" .005" - .010" .010" - .030" .030" - .060" .060" - .125" .125" - .250" .250" - .500" .500" - 1.000"
 TWO PLACE DECIMAL: ± .005
 THREE PLACE DECIMAL: ± .003
 FINISHED SURFACE AND BREAK CORNERS TO BE SHOWN
 REMOVE ALL BURRS

DO NOT SCALE THIS DRAWING	ISSUED FOR INFORMATION.	ISSUE DESCRIPTION	CHKD	DRWN	DATE	DESI
0					11/26/96	

PROCESS SYSTEMS INTERNATIONAL, INC.
 20 WALSH DR. WESTBOROUGH, MASSACHUSETTS 01581 USA

CLEAN ROOM ASSEMBLY
 BEAM SPLITTER CHAMBER
 LIGO VACUUM EQUIPMENT

C48 FILE: V0494133
 SIZE: D
 DWG. NO.: V049-4-133
 REV: 0

SCALE: 1"=2'
 SHEET: 1 OF 1