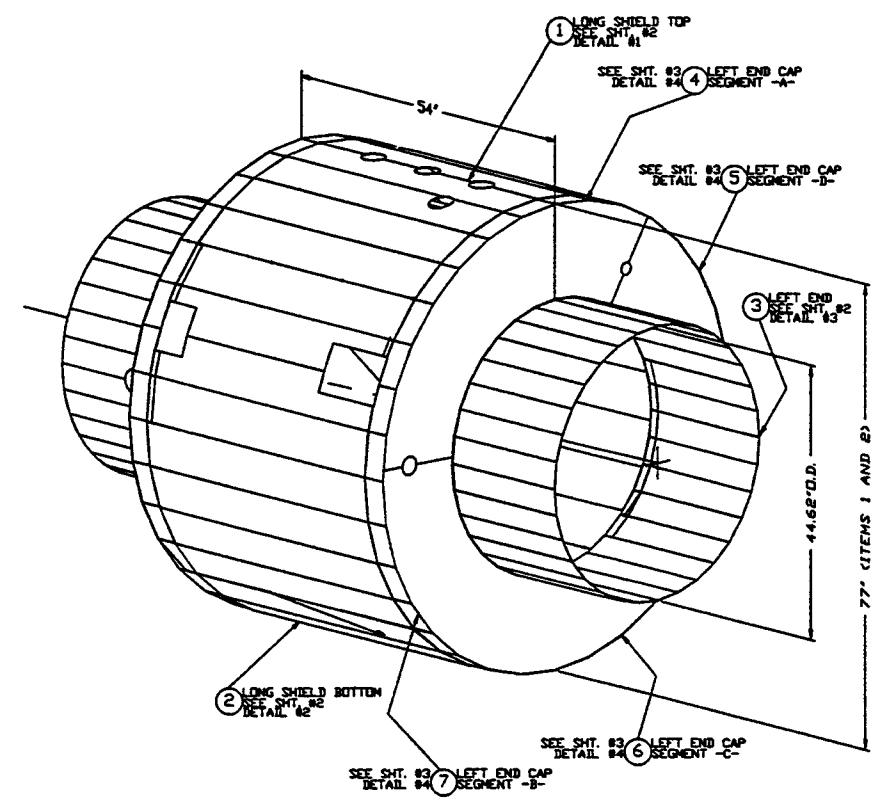


RIGHT END ISO VIEW



ISO VIEW LEFT END

RIGHT SHIELD ASS'Y V049-4-117-G1 AS SHOWN
LEFT SHIELD ASS'Y V049-4-117-G2 OPPOSITE HAND

- NOTE:
1. ALL ALUMINUM SHEET MATERIAL TO BE 5000 SERIES. VENDOR TO CONFIRM MATERIAL ALLOY SPECIFICATION, WITH PSI, PRIOR TO FABRICATION.
 2. SEE ADDITIONAL NOTES ON SHT. 2 OF 2.

LIGO-D970419-C3-V

PROCESS SYSTEMS INTERNATIONAL, INC.
20 WALKUP DR. WESTBOROUGH, MASSACHUSETTS 01581 USA

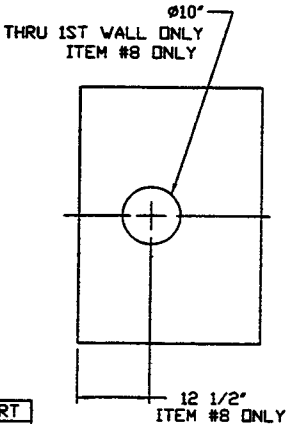
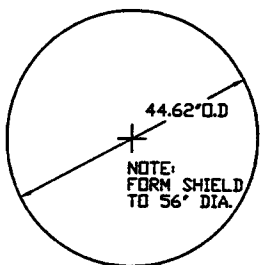
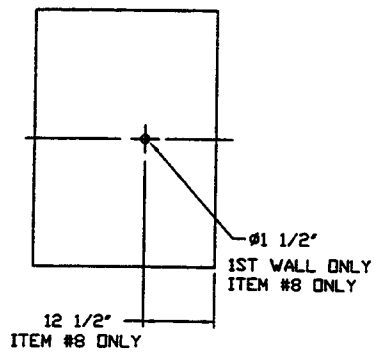
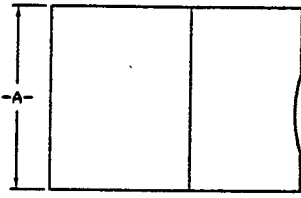
PROPRIETARY AND CONFIDENTIAL
THIS DOCUMENT CONTAINS PROPRIETARY INFORMATION BELONGING TO PROCESS SYSTEMS INTERNATIONAL, INC. OR ITS AFFILIATED COMPANIES AND SHALL BE USED ONLY FOR THE PURPOSE FOR WHICH IT WAS SUPPLIED. IT SHALL NOT BE COPIED, REPRODUCED OR OTHERWISE USED, NOR SHALL SUCH INFORMATION BE FURNISHED IN WHOLE OR IN PART TO OTHERS EXCEPT BY ACCORDANCE WITH THE TERMS OF ANY AGREEMENT UNDER WHICH IT WAS SUPPLIED OR WITH THE PRIOR WRITTEN CONSENT OF PROCESS SYSTEMS INTERNATIONAL, INC. AND SHALL BE RETURNED UPON REQUEST.

DWG. NO.	DESCRIPTION	DWG. NO.	DESCRIPTION

UNLESS OTHERWISE SPECIFIED
DIMENSIONS ARE IN INCHES
TOLERANCES:
FRACTIONAL .001
ANGULAR 30°-30' BEND 20°
TWO PLACE DECIMAL ± .03
THREE PLACE DECIMAL ± .015
FINISHED SURFACE RISE
BREAK CORNERS IN OUT
REMOVE ALL BURRS

DO NOT SCALE THIS DRAWING	USED ON	REV	DESCRIPTION	ISSUE DESCRIPTION
		0	ISSUED FOR FABRICATION	RDC DNV PEF GS DM REC TDV 6/18/96 0388
		1	REISSUED FOR FABRICATION	DNV PEF GS REC PV 1/3/97 0397
		2	REISSUED FOR FABRICATION	DMV PEF GS RDC REC PV 1/31/97 0426
		3	REISSUED FOR FABRICATION	DMV PEF GS RDC REC JR 4/14/97 0463

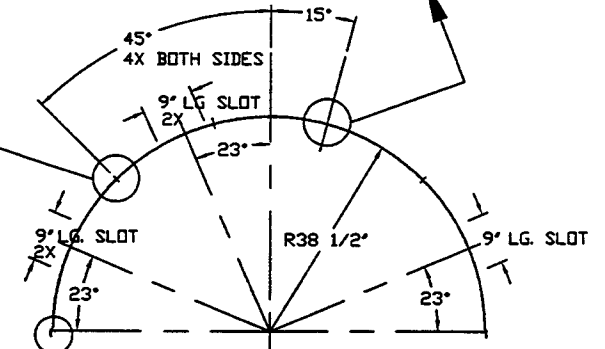
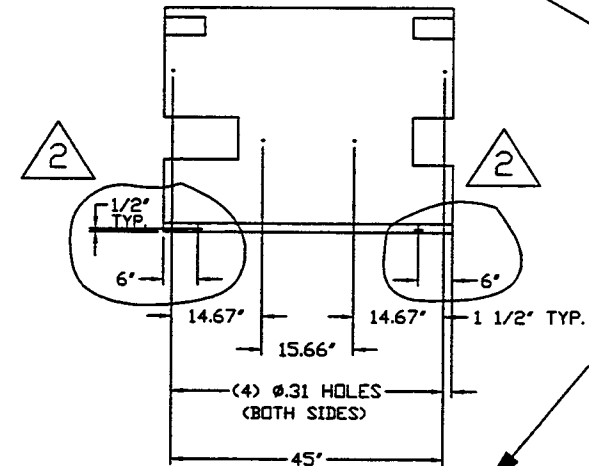
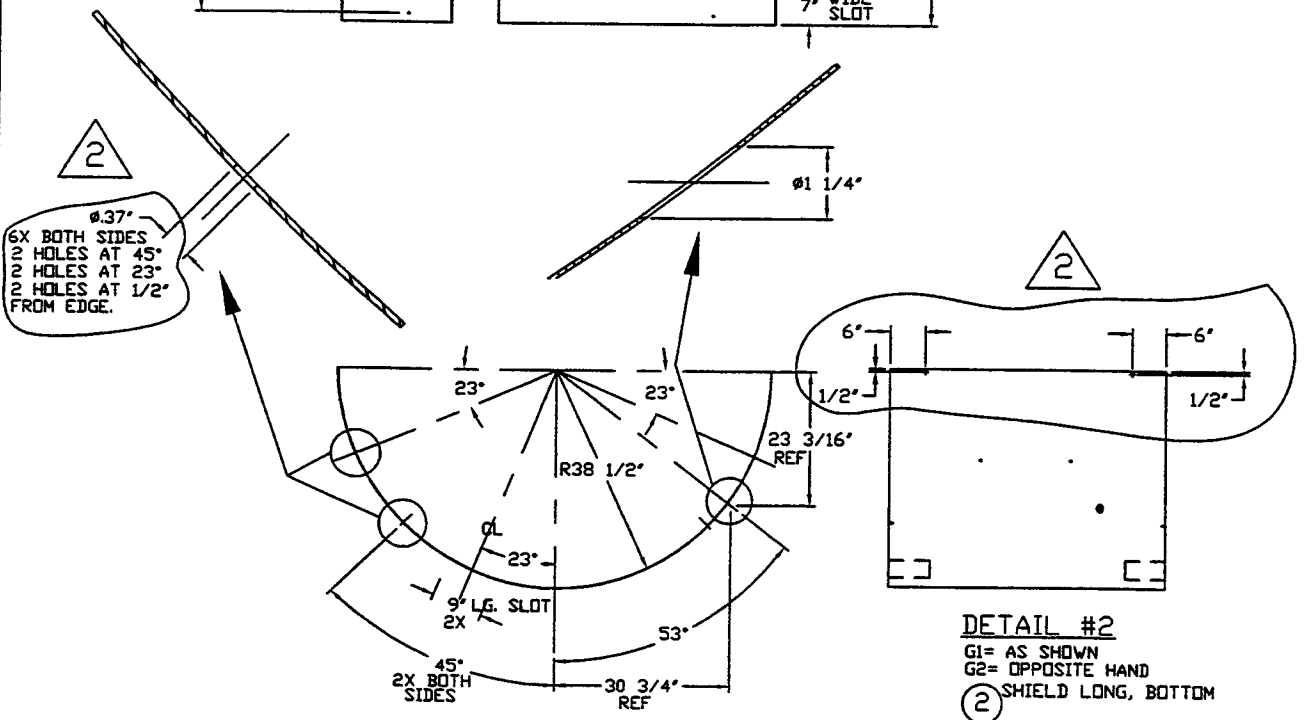
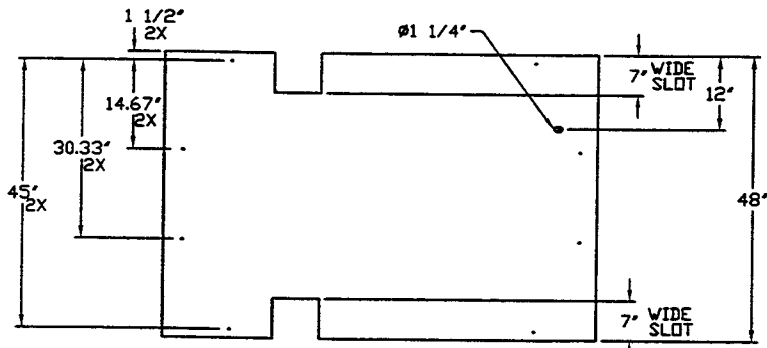
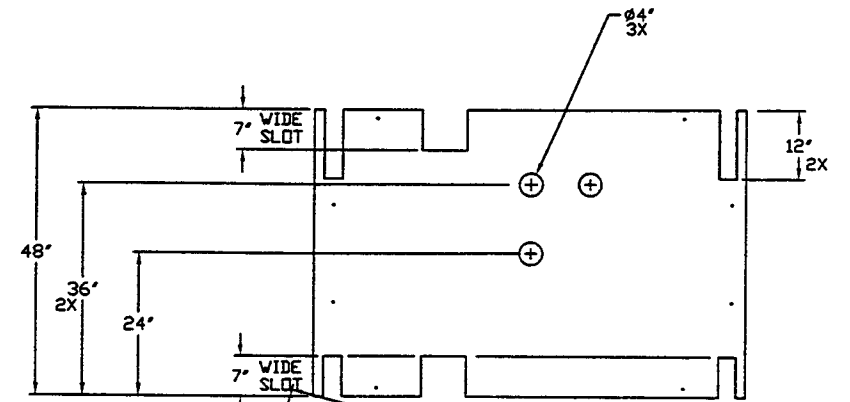
80K PUMP-SHORT-SHIELD DETAIL ASS'Y RIGHT HAND AND LEFT HAND		REV. 3
LIGO VACUUM EQUIPMENT		
CAD FILE 494117S1	DWG. NO. V049-4-117	REV. 3
SCALE NONE	SHEET 1 OF 3	



SHIELD END DIMENSION CHART	
ITEM NO.	DIM - A-
#3	23 1/2"
#8	31 1/2" (SHOWN)

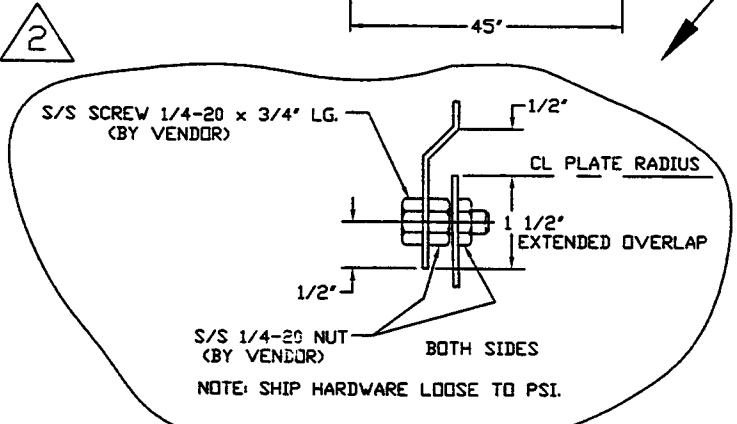
#3-G1 & #8-G1= AS SHOWN
 #3-G2 & #8-G2= OPPOSITE HAND
 NOTE: SHIELDS TO BE PERFORATED WITH 7/16" HOLES ON 3" CENTERS.

6X BOTH SIDES
 2 HOLES AT 45°
 2 HOLES AT 23°
 2 HOLES AT 1/2" FROM EDGE



DETAIL #1
 G1= AS SHOWN
 G2= OPPOSITE HAND
 ① SHIELD LONG, TOP

DETAIL #2
 G1= AS SHOWN
 G2= OPPOSITE HAND
 ② SHIELD LONG, BOTTOM



- NOTE:
1. ALL ALUMINUM SHEET MATERIAL TO BE 5000 SERIES. VENDOR TO CONFIRM MATERIAL ALLOY SPECIFICATION, WITH PSI, PRIOR TO FABRICATION.
 2. USE TIG WELD PROCESS.
 3. COVER ROWER/FORMING EQUIPMENT TO PREVENT IRON CONTAMINATION OF SHIELDS.
 4. COVER DURING STORAGE & SHIPMENT TO PREVENT CONTAMINATION FROM HYDROCARBONS, CLORIDES & DIRT.

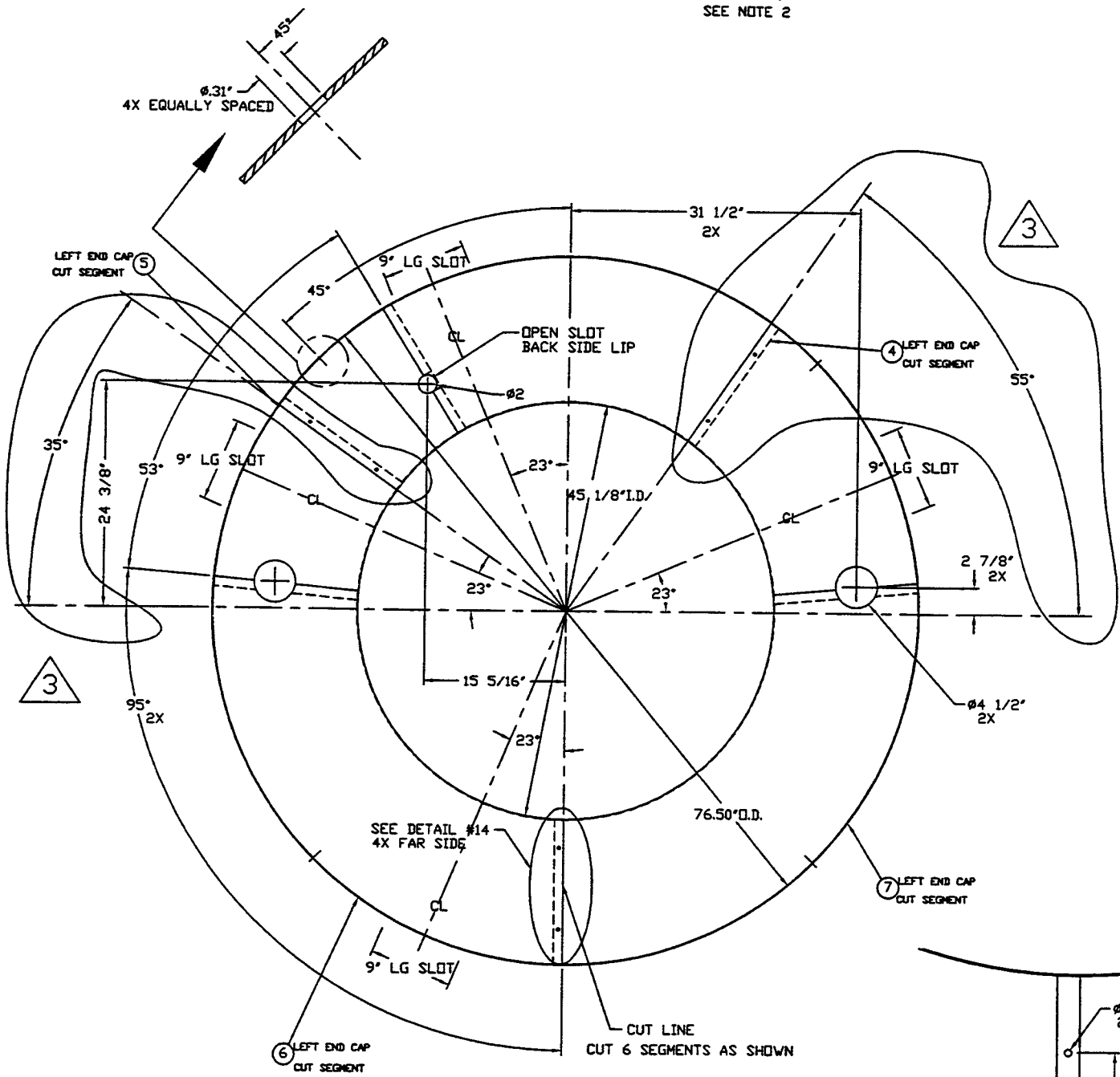
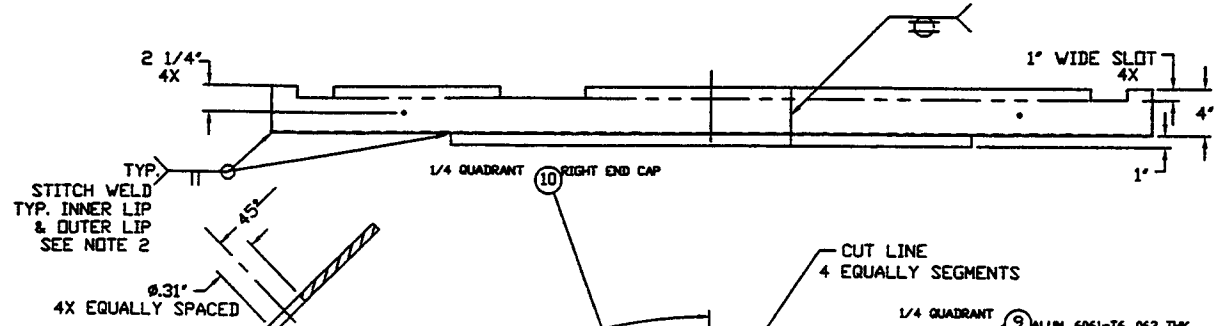
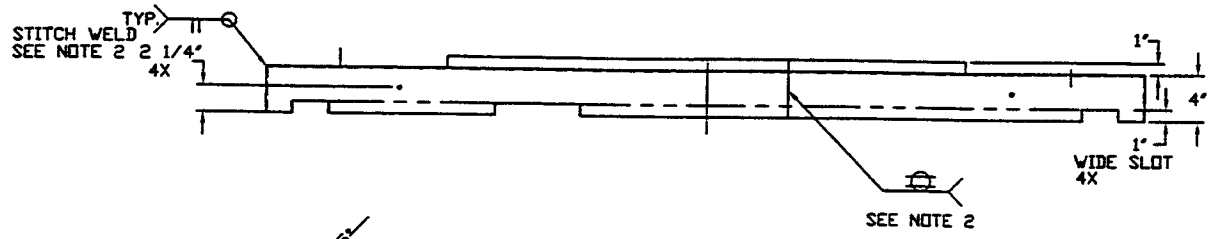
SEE SHEET 1 FOR REVISIONS

PROCESS SYSTEMS INTERNATIONAL INC.
 20 WALKUP DR. WESTBOROUGH, MASSACHUSETTS 01581 USA

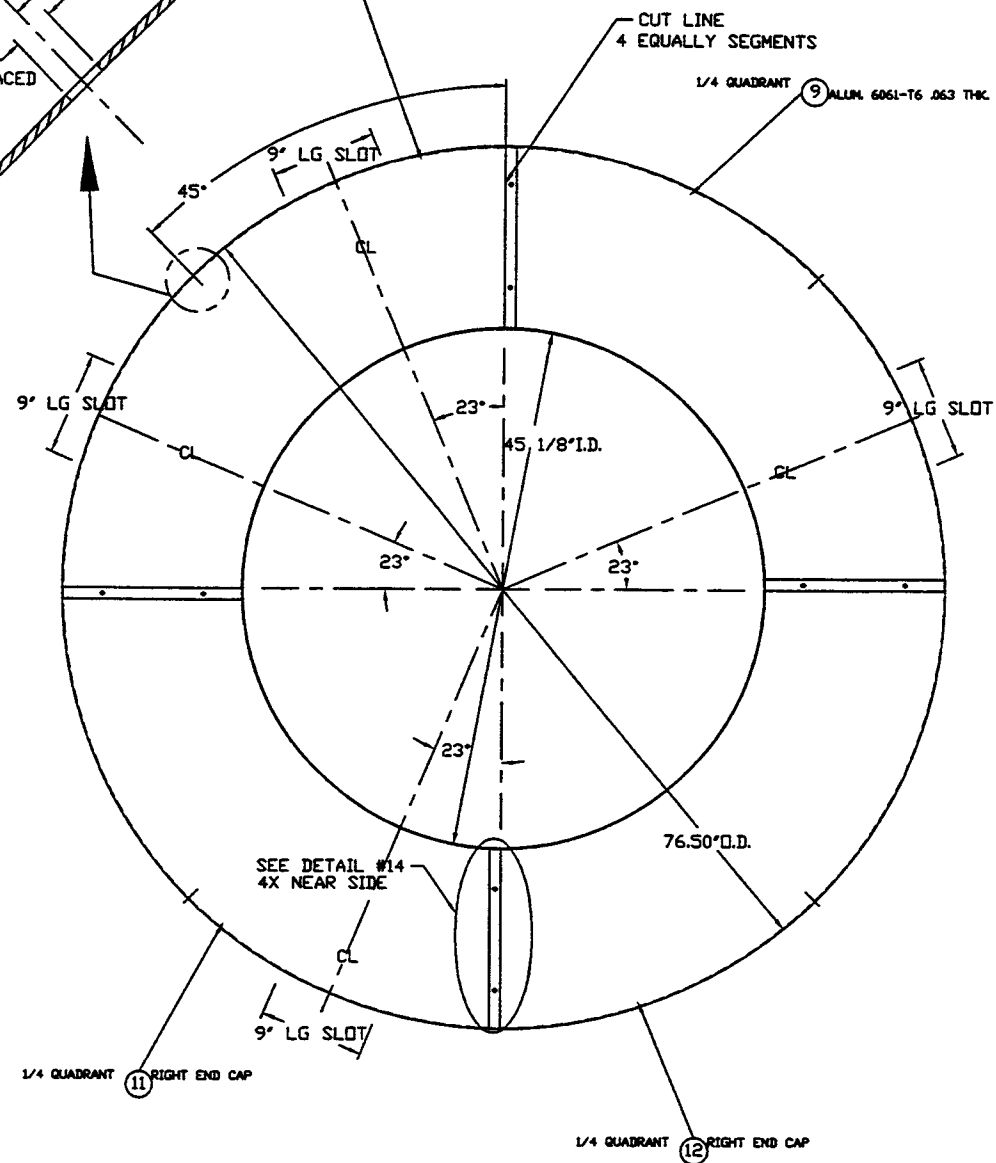
80K PUMP-SHORT-SHIELD DETAIL ASSY
 RIGHT HAND & LEFT HAND

LIGD VACUUM EQUIPMENT

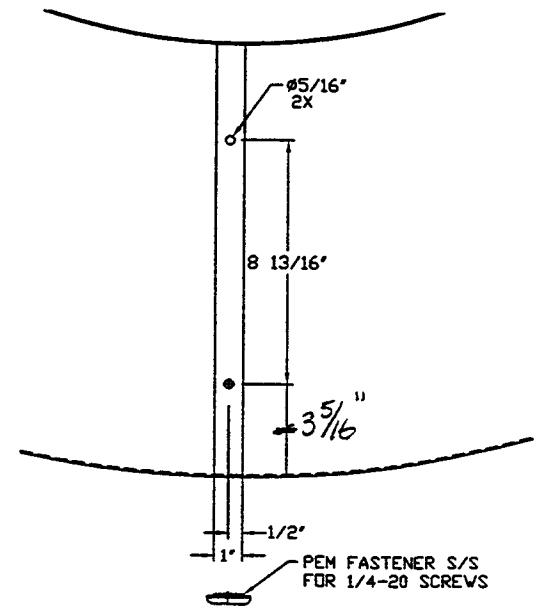
CAD FILE	SIZE	DWG. NO.	REV.
494117S2	D	V049-4-117	3
SCALE	NONE	SHEET	2 OF 3



DETAIL #4 (VIEW INSIDE-OUT)
 G1-AS SHOWN
 G2-OPPOSITE HAND



DETAIL #9 (VIEW OUTSIDE-IN)
 G1-AS SHOWN
 G2-OPPOSITE HAND



DETAIL #14

- NOTE:**
1. ALL ALUMINUM SHEET MATERIAL TO BE 5250 SERIES. VENDOR TO CONFIRM MATERIAL ALLOY SPECIFICATION, WITH PSI, PRIOR TO FABRICATION.
 2. USE TIG WELD PROCESS.
 3. SEE ADDITIONAL NOTES ON SHT. 2 OF 3.

SEE SHEET 1 FOR REVISIONS

PROCESS SYSTEMS INTERNATIONAL INC. 20 WALKUP DR. WESTBOROUGH, MASSACHUSETTS 01581 USA			
80K PUMP-SHORT-SHIELD DETAIL ASSY RIGHT HAND & LEFT HAND LIGD VACUM EQUIPMENT			
CAD FILE 494117S3	SIZE D	DWG NO. V049-4-117	REV. 3
SCALE NONE	SHEET 3 OF 3		