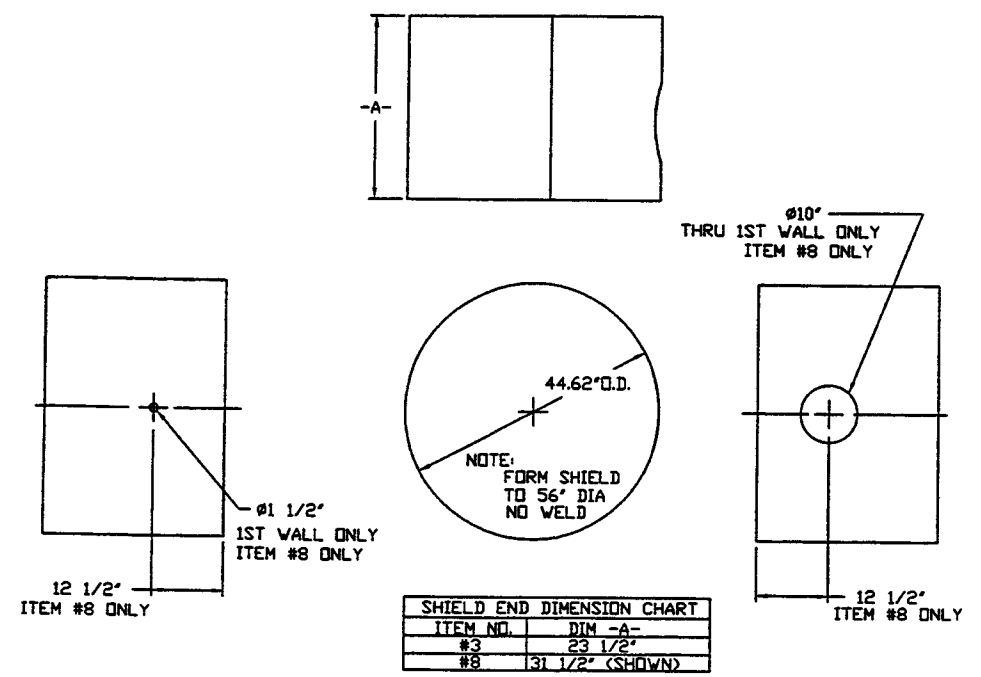
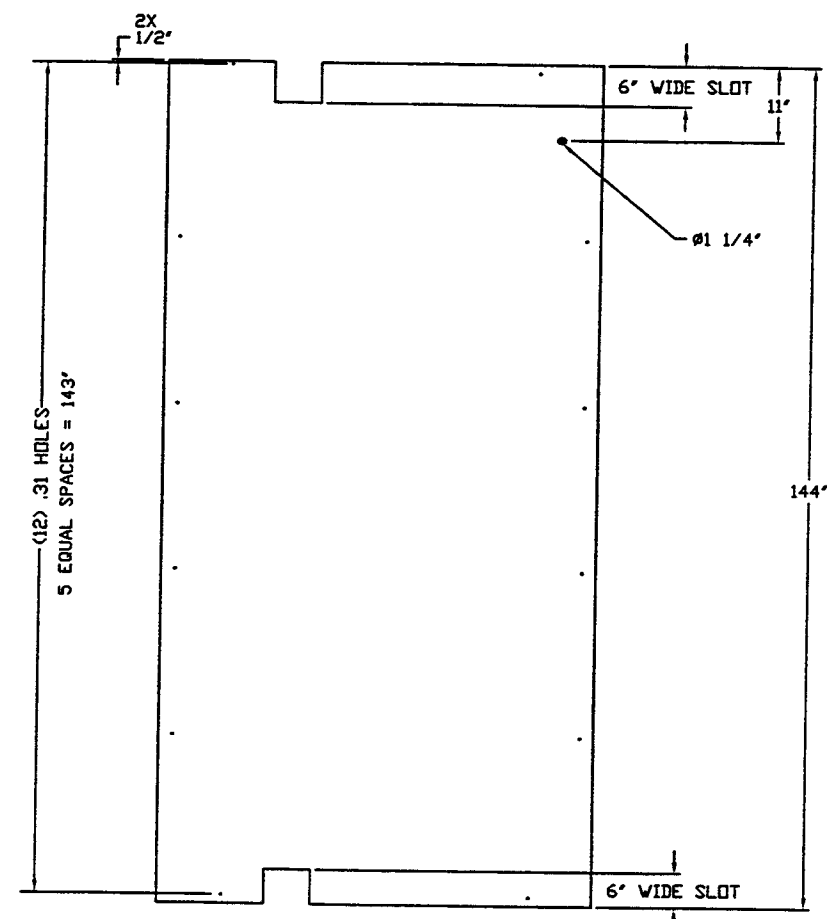
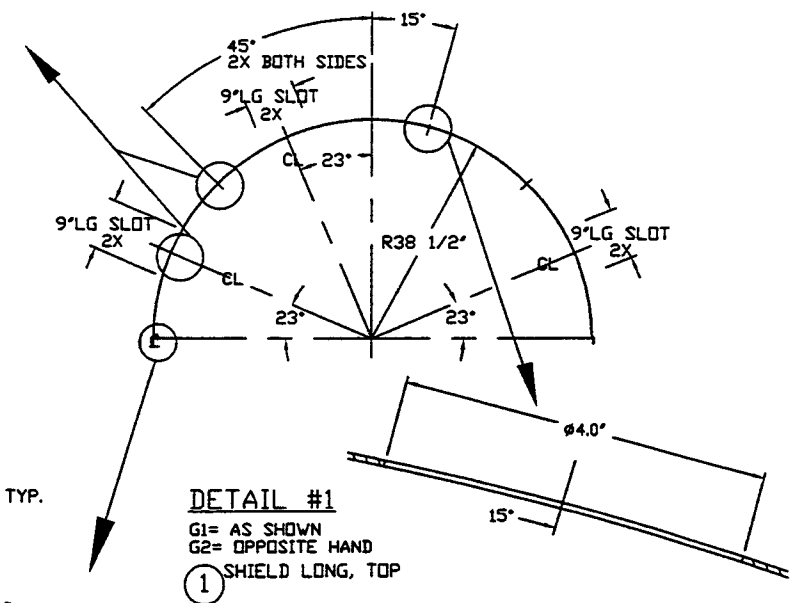
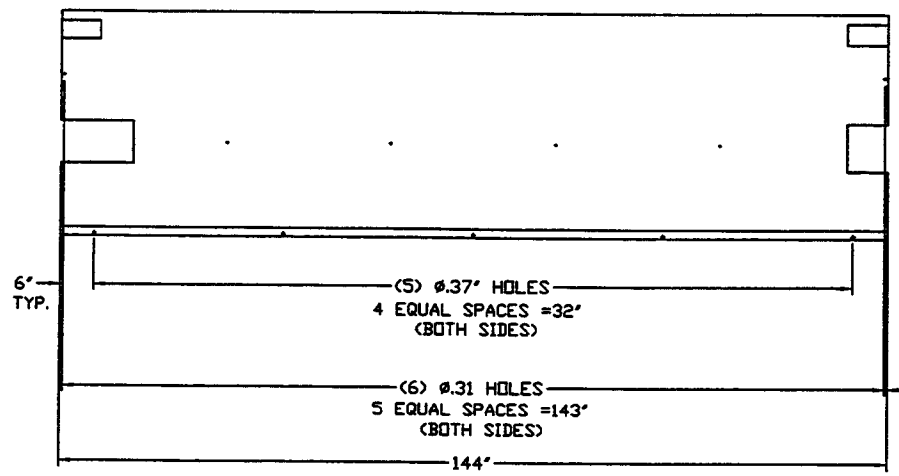
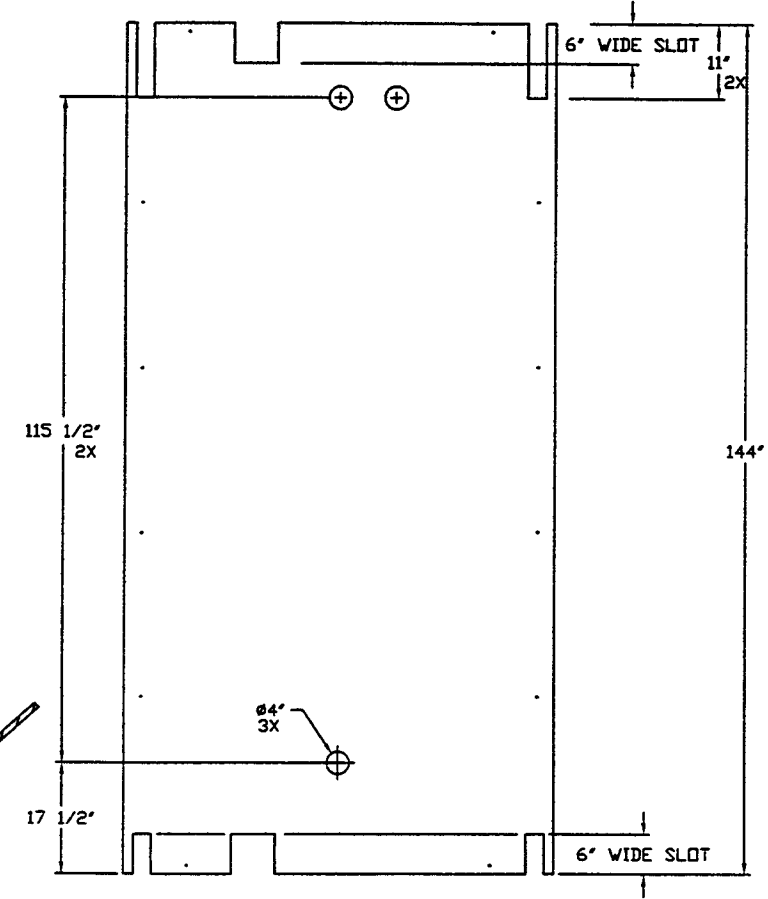
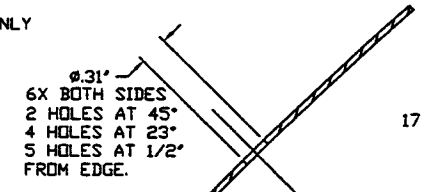




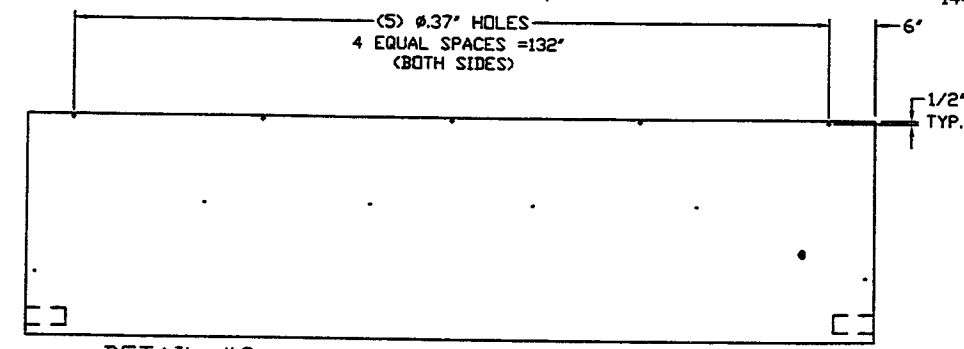
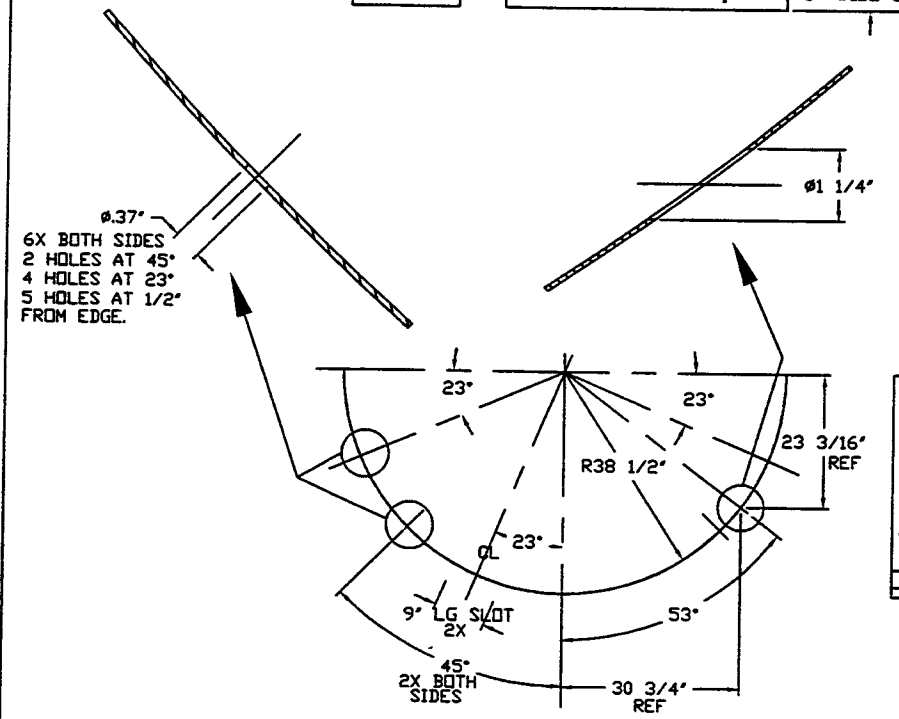
- NOTE:**
- 1.) ALL ALUMINUM SHEET MATERIAL TO BE 5052 SERIES. VENDOR TO CONFIRM MATERIAL ALLOY SPECIFICATION, WITH PSI, PRIOR TO FABRICATION.
  - 2.) USE TIG WELD PROCESS.
  - 3.) COVER ROLLER/FORMING EQUIPMENT TO PREVENT IRON CONTAMINATION OF SHIELDS.
  - 4.) COVER DURING STORAGE AND SHIPMENT TO PREVENT CONTAMINATION OF HYDROCARBONS, CHLORIDES OR DIRT.



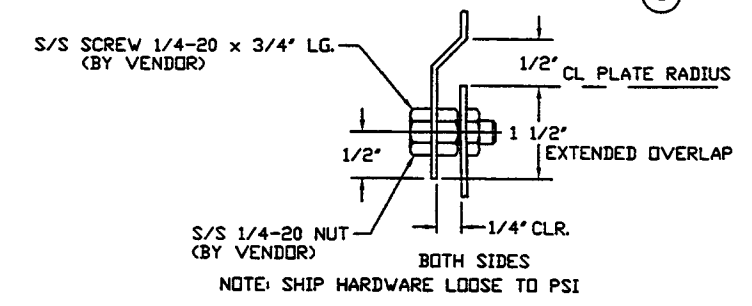
NOTE: SHIELDS TO BE PERFORATED WITH 7/16" HOLES ON 3" CTRS.



**DETAIL #1**  
G1= AS SHOWN  
G2= OPPOSITE HAND  
① SHIELD LONG, TOP



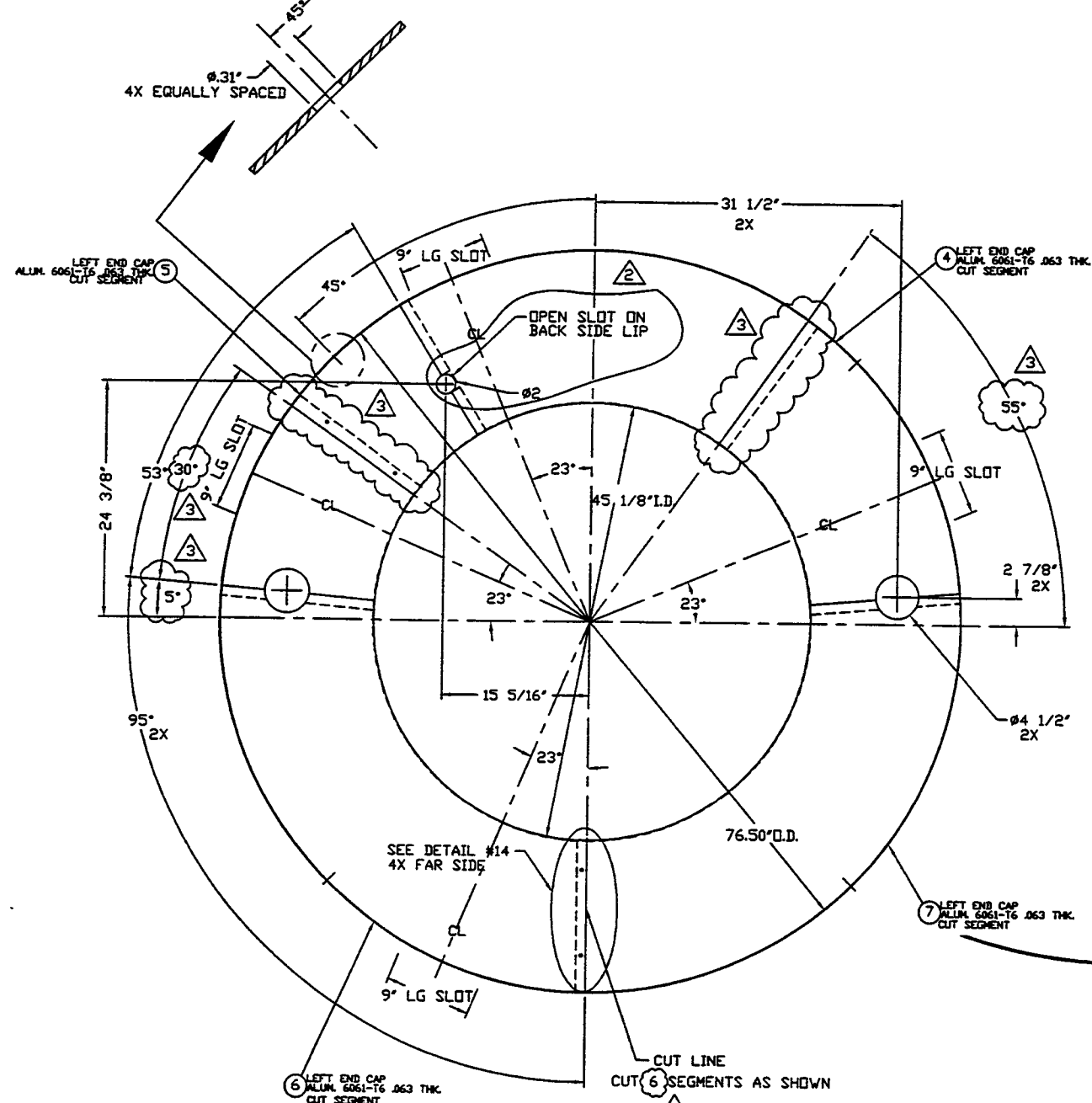
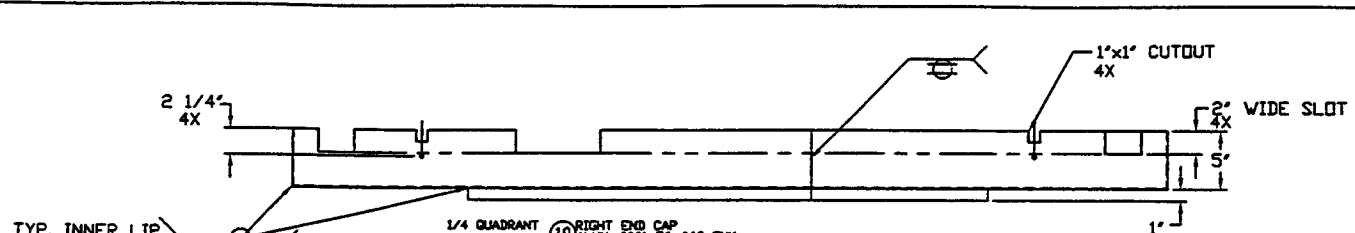
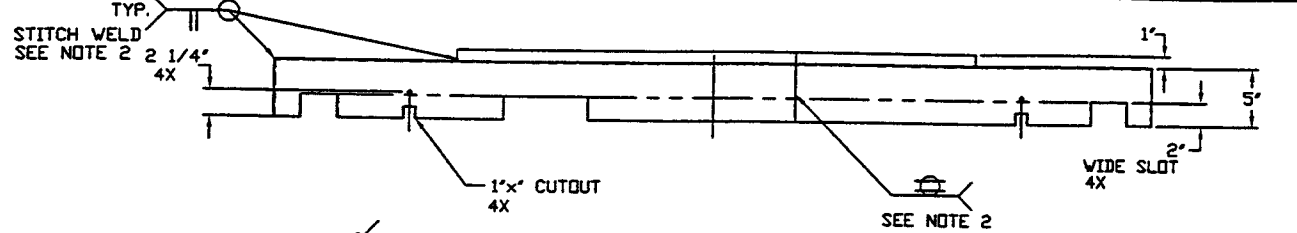
**DETAIL #2**  
G1= AS SHOWN  
G2= OPPOSITE HAND  
② SHIELD LONG, BOTTOM



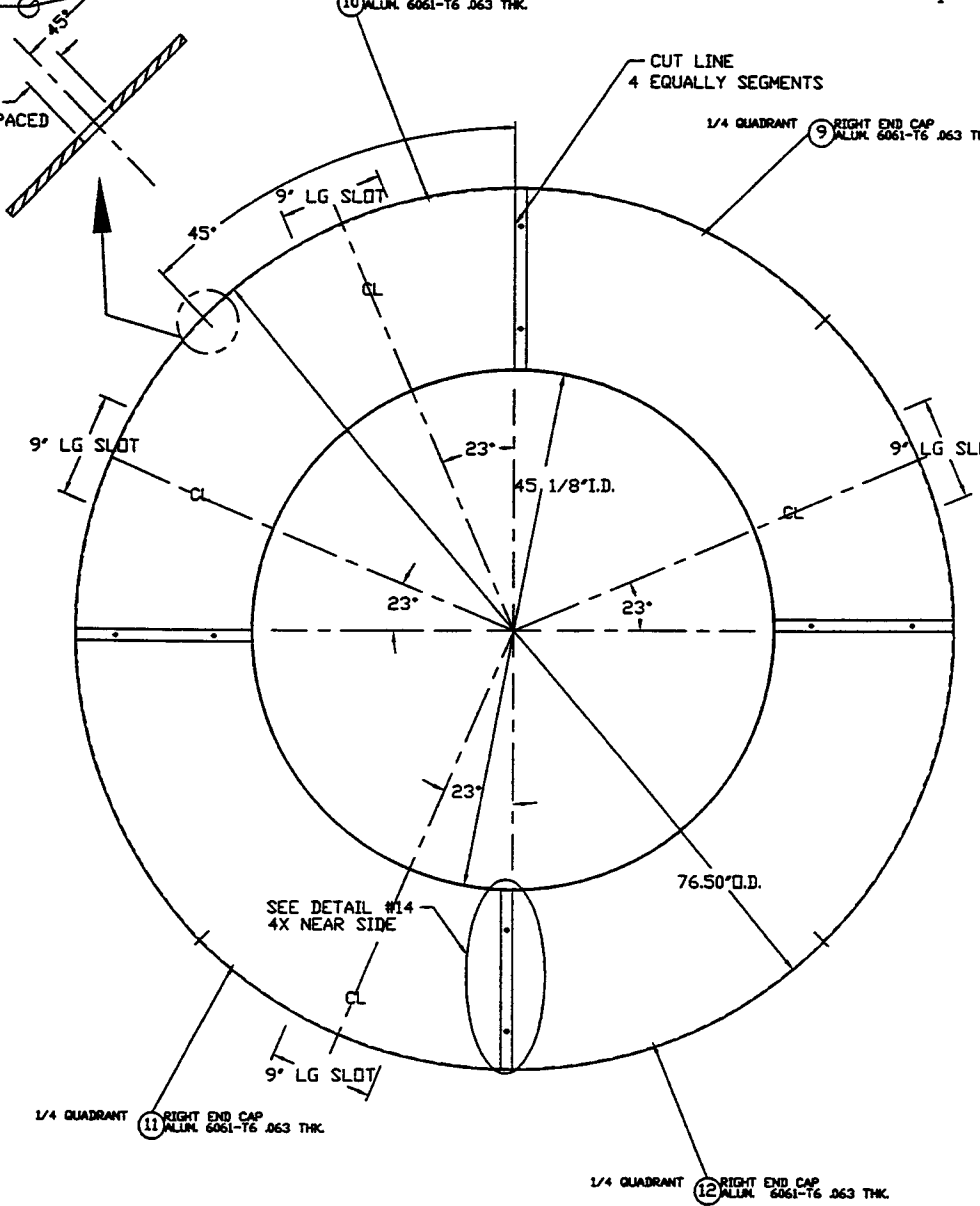
NOTE: SHIP HARDWARE LOOSE TO PSI

SEE SHEET 1 FOR REVISIONS

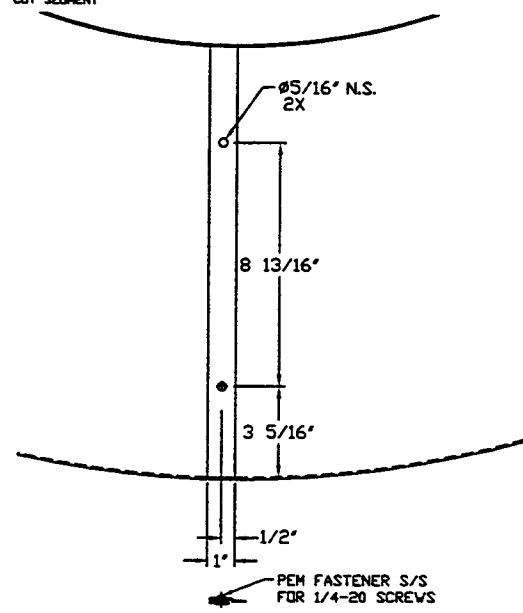
<b>PROCESS SYSTEMS INTERNATIONAL INC.</b> 20 WALKUP DR. WESTBOROUGH, MASSACHUSETTS 01581 USA			
<b>80K PUMP-LONG-SHIELD DETAIL ASS'Y</b> <b>RIGHT HAND AND LEFT HAND</b> <b>LIGO VACUUM EQUIPMENT</b>			
CAD FILE	SIZE	DWG. NO.	REV.
494114S2	D	V049-4-114	3
SCALE	NONE	SHEET	2 OF 3



**DETAIL #4 (VIEW INSIDE-OUT)**  
G1-AS SHOWN  
G2-OPPOSITE HAND



**DETAIL #9 (VIEW OUTSIDE-IN)**  
G1-AS SHOWN  
G2-OPPOSITE HAND



**DETAIL #14**

- NOTE:**
- 1.) ALL ALUMINUM SHEET MATERIAL TO BE 5052 x .086 THK. VENDOR TO CONFIRM MATERIAL ALLOY SPECIFICATION, WITH PSI, PRIOR TO FABRICATION.
  - 2.) USE TIG WELD PROCESS.
  - 3.) SEE ADDITIONAL NOTES ON SHT. 2 OF 3.

SEE SHEET 1 FOR REVISIONS

<b>PROCESS SYSTEMS INTERNATIONAL INC.</b> 20 WALKUP DR. WESTBOROUGH, MASSACHUSETTS 01581 USA			
<b>80K PUMP-LONG-SHIELD DETAIL ASSY</b> RIGHT HAND AND LEFT HAND			
<b>LIGD VACUM EQUIPMENT</b>			
CAD FILE 494114S3	SIZE D	DWG. NO. V049-4-114	REV. 3
SCALE NONE	SHEET 3 OF 3		