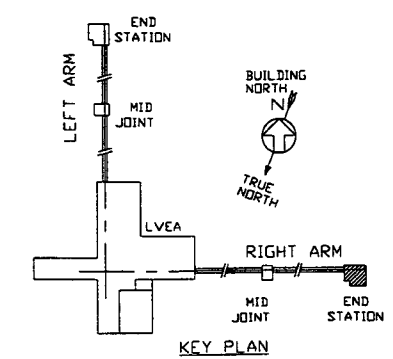


- NOTES:**
- SEE SPEC V049-2-025 FOR INSTALLATION/COMMISSIONING INFORMATION
 - FOR TUBING/PIPE SUPPORT REQUIREMENTS, SEE SPEC. V049-2-025, SECTION 10



PLAN @ FLOOR

PROPRIETARY AND CONFIDENTIAL
 THIS DOCUMENT CONTAINS PROPRIETARY INFORMATION BELONGING TO PROCESS SYSTEMS INTERNATIONAL, INC. OR ITS AFFILIATED COMPANIES AND SHALL BE USED ONLY FOR THE PURPOSE FOR WHICH IT WAS SUPPLIED. IT SHALL NOT BE COPIED, REPRODUCED OR OTHERWISE USED, NOR SHALL SUCH INFORMATION BE FURNISHED IN WHOLE OR IN PART TO OTHERS EXCEPT IN ACCORDANCE WITH THE TERMS OF ANY AGREEMENT UNDER WHICH IT WAS SUPPLIED OR WITH THE PRIOR WRITTEN CONSENT OF PROCESS SYSTEMS INTERNATIONAL, INC. AND SHALL BE RETURNED UPON REQUEST.

DWG NO	DESCRIPTION	REFERENCE DRAWINGS	DWG NO	DESCRIPTION
V049-0-025	P & ID RIGHT END STATION			
V049-0-006	P & ID 80K CRYOPUMP			
V049-5-008	EQUIPMENT ARRANGEMENT RIGHT END STATION			
1101102	LIGO VACUUM EQUIPMENT END STATION			

UNLESS OTHERWISE SPECIFIED
 DIMENSIONS ARE IN INCHES
 TOLERANCES:
 FRACTIONAL ±
 ANGULAR RADIUS ±
 TWO PLACE DECIMAL ±
 THREE PLACE DECIMAL ±
 FINISHED SURFACE DIMS
 BREAK CORNERS IN
 REMOVE ALL BURRS

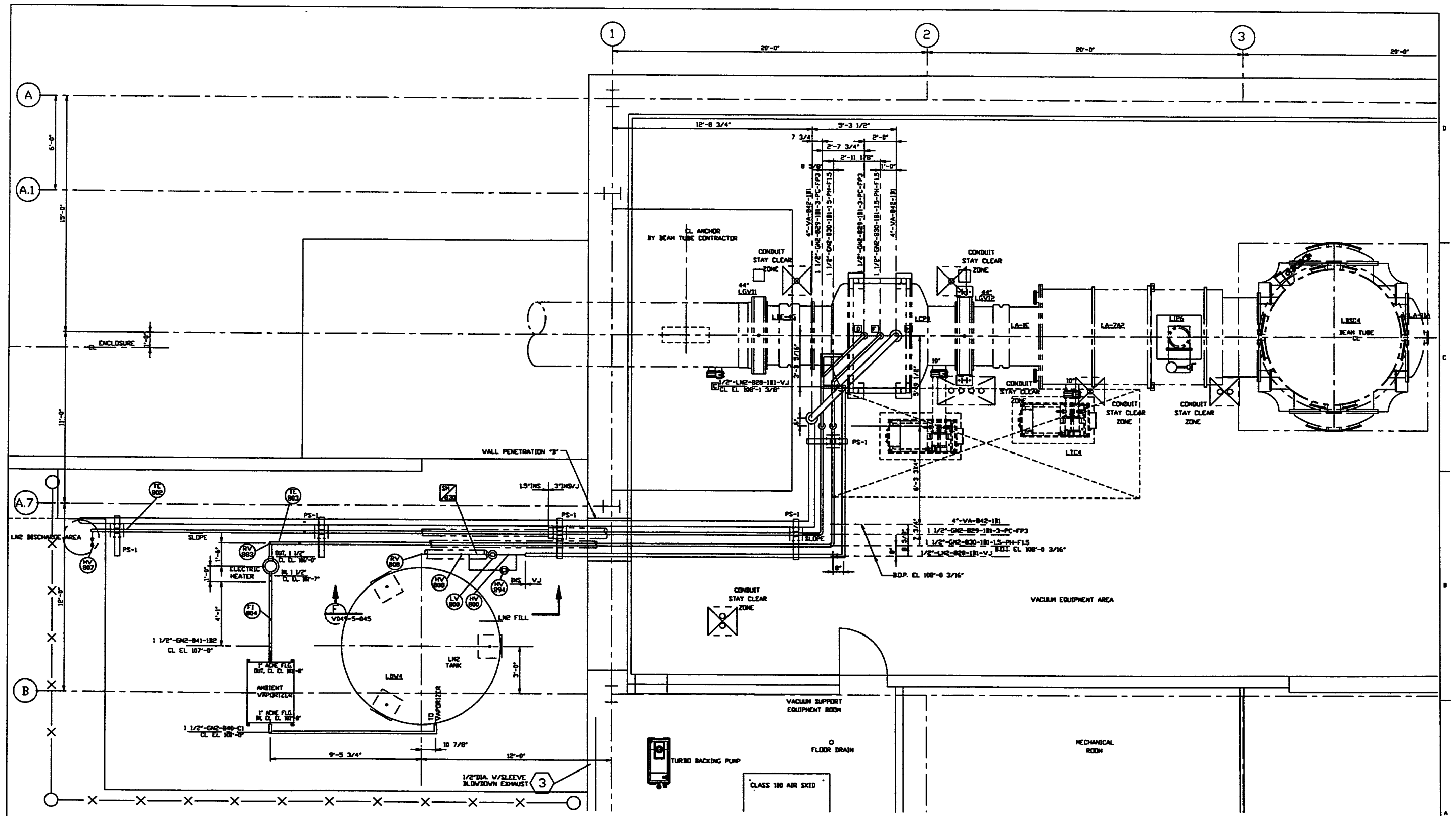
DO NOT SCALE THIS DRAWING
 USED ON
 NEXT ASSY.

REV	DESCRIPTION	CHKD	DRWN	DATE	DESN
0	ISSUED FOR FDR			11/3/97	0406

PROCESS SYSTEMS INTERNATIONAL, INC.
 20 WALKUP DR. WESTBOROUGH, MASSACHUSETTS 01581 USA

**PIPING ARRANGEMENT, PLAN
 RIGHT END STATION
 LOUISIANA SITE
 LIGO VACUUM EQUIPMENT**

CAD FILE: V0495043/S043S1
 SIZE: D
 DWG NO: V049-5-043
 SCALE: 3/8"=1'-0"
 SHEET: 1 OF 2



PLAN @ EL. 112'-6"

PROCESS SYSTEMS INTERNATIONAL, INC. <small>30 WILBUR DR. WESTBOROUGH, MASSACHUSETTS 01581 USA</small>			
PIPING ARRANGEMENT PLAN RIGHT END STATION LOUISIANA SITE LIGO VACUUM EQUIPMENT			
DWG FILE	SIZE	REV. NO.	REV.
V0495043/504352	D	V049-5-043	0
SCALE 3/8"=1'-0"		SHEET 2 OF 2	

JAN 14, 1997 - 182027