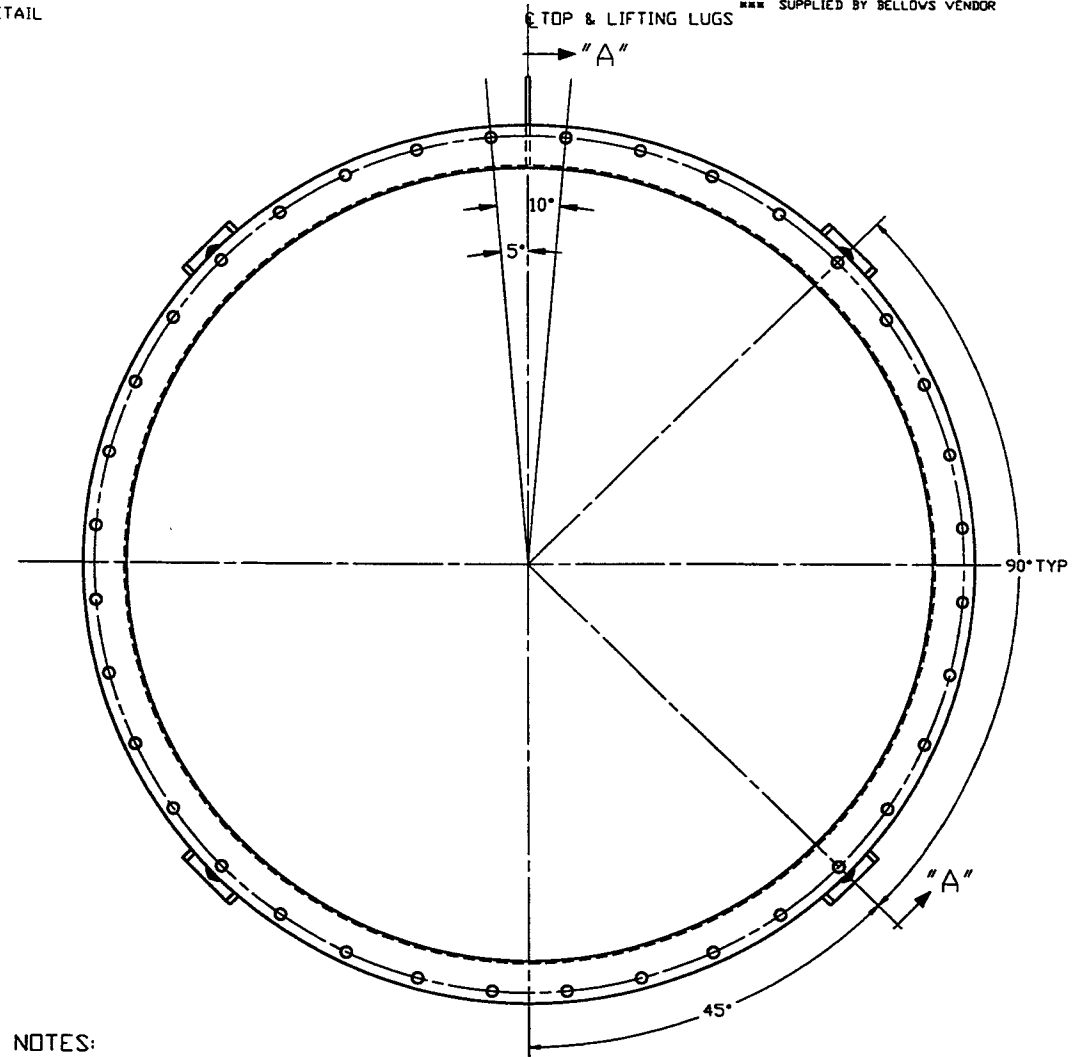
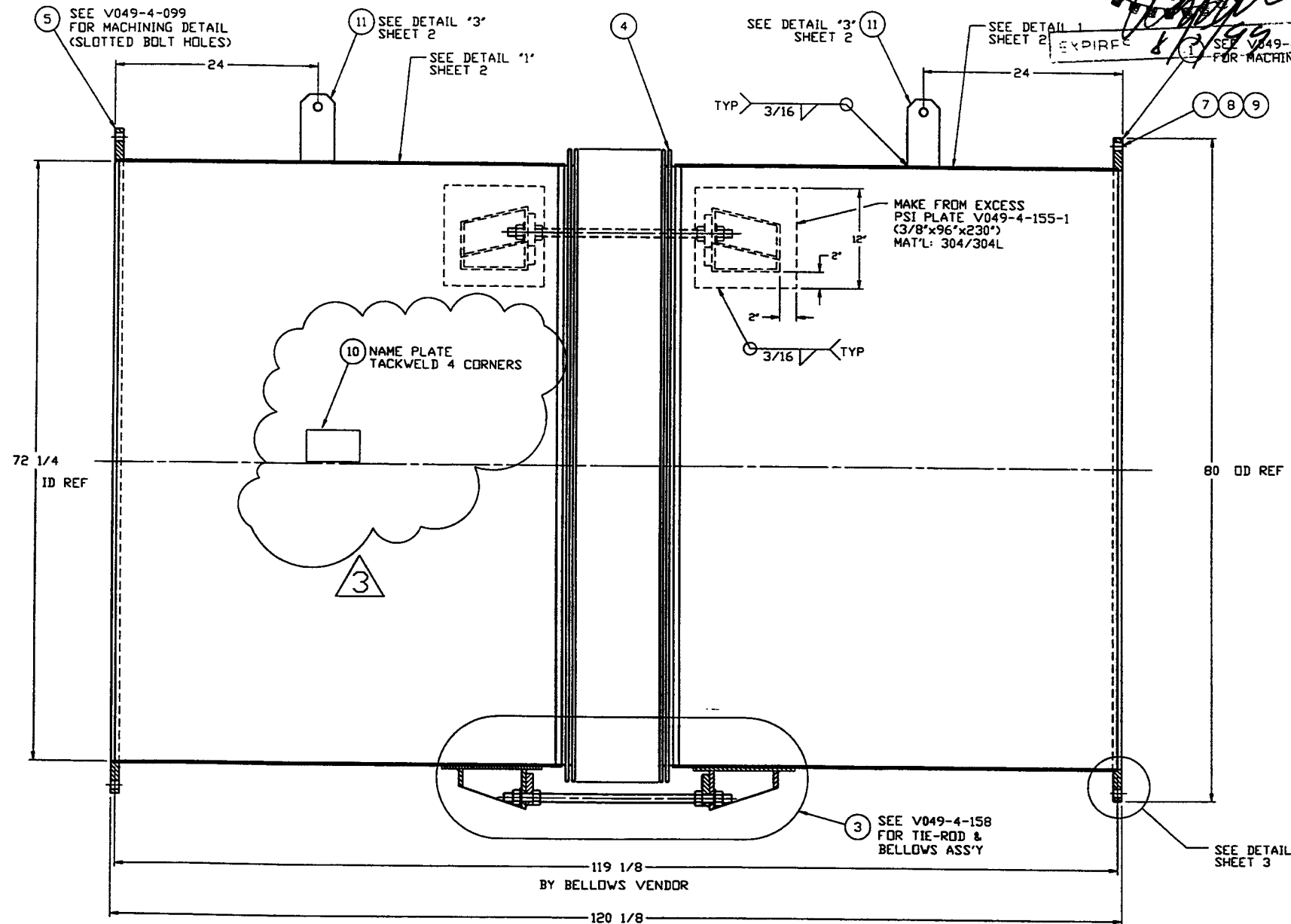


Raymond D. Gatto
 6/26/97

ITEM	PART NUMBER	SUFFIX	QTY	UM	DESCRIPTION
1	V0494028		1	EA	FLANGE, FLAT FACED, 72 1/4" ID x 80" OD x 1" THK
4	V0494BE1P1		1	EA	BELLOWS ASSY (PER SPEC V049-2-017)
5	V0494099		1	EA	FLANGE, FLAT FACED, 72 1/4" ID x 80" OD
6					
10	V049M740		1	EA	NAME PLATE 2" X 3"
11	***		3	3.5	EA BAR, 4" X 3/8" THK, 304 SST



- NOTES:
- FOR FLANGE DETAILS SEE DWG. V049-4-028 & V049-4-099.
 - SPOOL FABRICATION TO BE IN ACCORDANCE WITH SPEC. V049-2-097.
 - DO NOT USE CARBON STEEL BRUSHES OR BRUSHES CONTAMINATED WITH CARBON STEEL ON STAINLESS OR ALUMINUM MATERIAL.
 - CLEAN PER SPEC. V049-2-015.
 - BOLT HOLES OF ALL FLANGES TO STRADDLE VERTICAL CENTERLINE ±0.15.
 - CERTIFIED MANUFACTURER'S MATERIAL TEST REPORTS REQUIRED, AS NOTED.
 - LEAK TEST & METHOD PER PSI SPEC: V049-2-014.
 - TIGHTEN TIE-ROD NUTS WITH BELLOWS IN "FREE" POSITION TO 100 FT-LBS PRIOR TO LEAK TEST.
 - TIGHTEN TIE-ROD NUTS WITH BELLOWS IN "FREE" POSITION TO 100 FT-LBS PRIOR TO LEAK TEST.
 - EACH FINISHED SHELL IS TO BE MARKED WITH A SEQUENTIAL PSI SERIAL NUMBER. THE NUMBER IS TO BE MADE FROM THE DRAWING PLUS THE SEQUENTIAL NUMBER. V0494BE1-01, -02 ETC.
 - PLATES PRIOR TO ROLLING MUST HAVE DIAGONAL CORNER TO CORNER DIMENSIONS WITHIN 1/16" OF EACH OTHER.

APPROX. WEIGHT: 2513#

SECTION "A"- "A"

3 TAG NO. LBE-1A, LBE-1B

PROPRIETARY AND CONFIDENTIAL
 THIS DOCUMENT CONTAINS PROPRIETARY INFORMATION BELONGING TO PROCESS SYSTEMS INTERNATIONAL, INC. OR ITS AFFILIATED COMPANIES AND SHALL BE USED ONLY FOR THE PURPOSE FOR WHICH IT WAS SUPPLIED. IT SHALL NOT BE REPRODUCED OR OTHERWISE DISCLOSED IN WHOLE OR IN PART TO ANY OTHER PARTY WITHOUT THE WRITTEN CONSENT OF PROCESS SYSTEMS INTERNATIONAL, INC. AND SHALL BE RETURNED UPON REQUEST.

DWG. NO.	DESCRIPTION	DWG. NO.	DESCRIPTION

SYMBOL	CHARACTERISTIC	UNLESS OTHERWISE SPECIFIED TOLERANCES ARE IN INCHES
∇	FLATNESS	FRACTIONAL & 3 DECIMALS
\circ	CYLINDRICITY	FRACTIONAL & 3 DECIMALS
\parallel	PARALLELISM	FRACTIONAL & 3 DECIMALS
\perp	PERPENDICULARITY	FRACTIONAL & 3 DECIMALS
\sphericalangle	ANGULARITY	FRACTIONAL & 3 DECIMALS
\oplus	TRUE POSITION	FRACTIONAL & 3 DECIMALS
\odot	CONCENTRICITY	FRACTIONAL & 3 DECIMALS

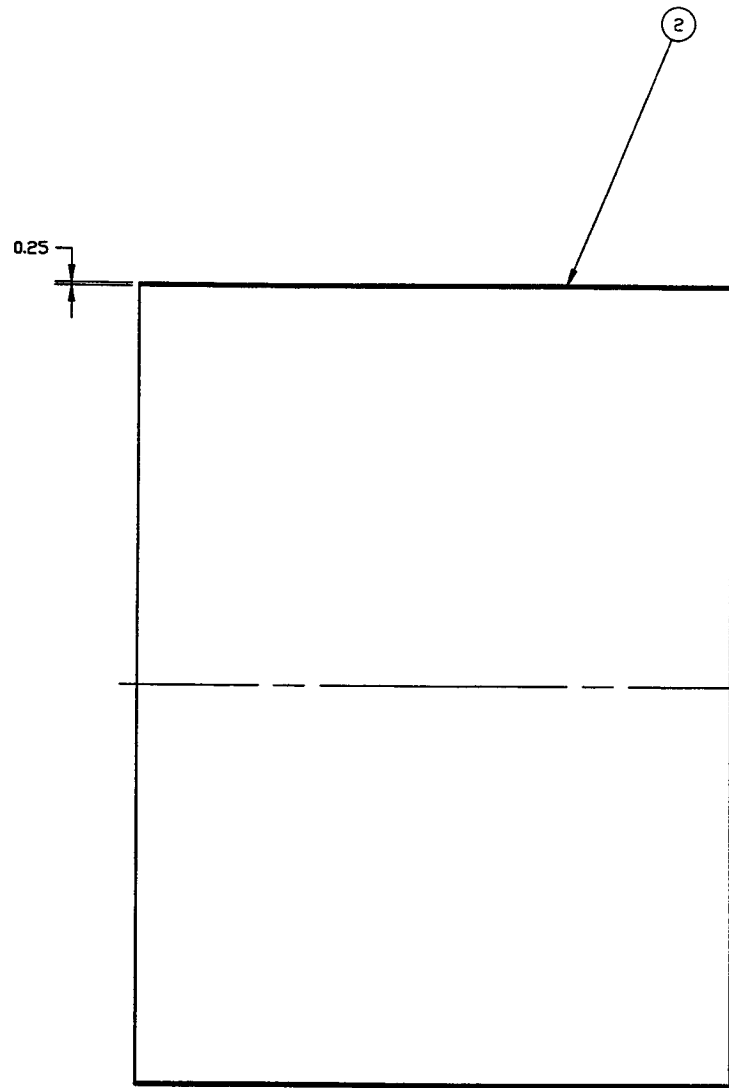
REV	DESCRIPTION	CHKD	DRWN	DATE	DESN
3	ISSUED FOR FABRICATION AS NOTED	PEF	GS	RDC	REC
2	DESIGN UPDATE/ISSUED FOR FABRICATION	PEF	GS	RDC	REC
1	DESIGN UPDATE/FABRICATION (BELLOWS ASSY. ONLY)	PEF	GS	RDC	REC
0	ISSUED FOR FDR	DMV	RDC	REC	DA
PI	PRELIMINARY				

PROCESS SYSTEMS INTERNATIONAL, INC.
 20 WALKUP DR. WESTBOROUGH, MASSACHUSETTS 01581 USA

SPOOL BE-1
 72.25" ID
 LIGO VACUUM EQUIPMENT

CAD FILE: V0494BE1/4BE1S1
 SIZE: D
 DWG. NO.: V049-4-BE1
 SHEET: 3

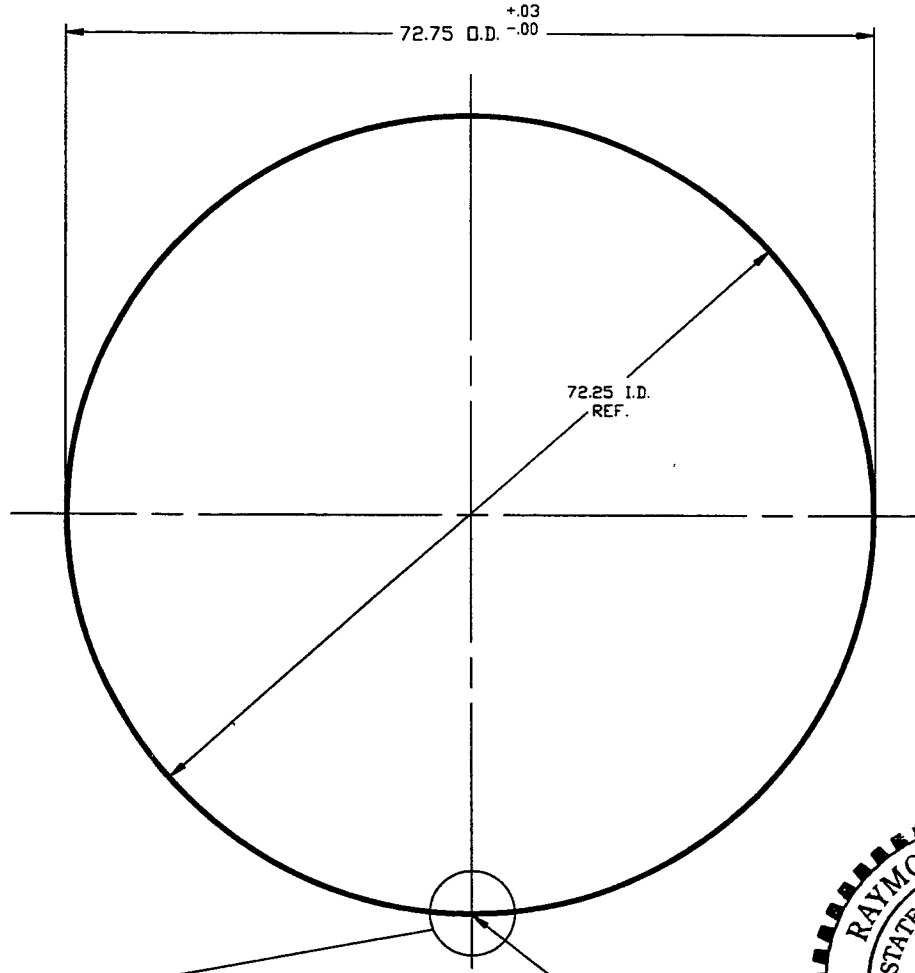
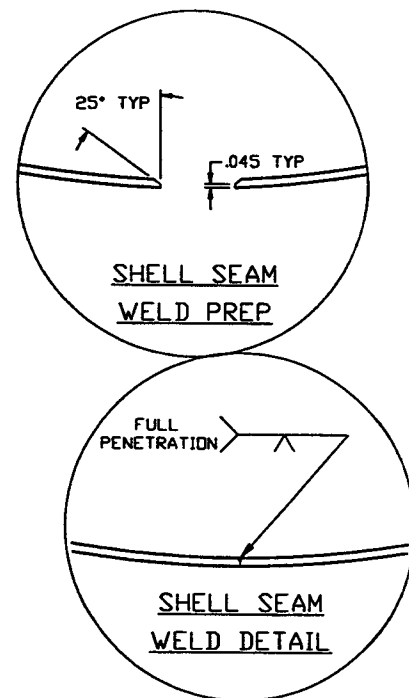
SCALE: 1-1/2" = 1'
 SHEET: 1 OF 2



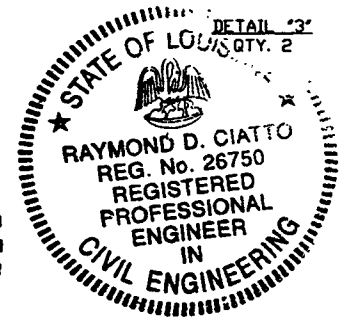
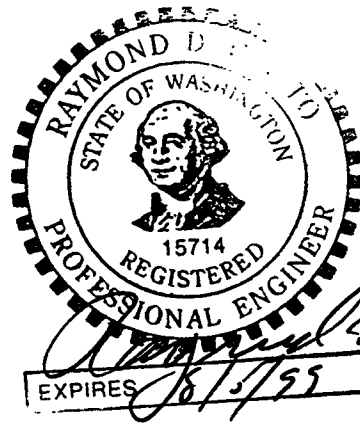
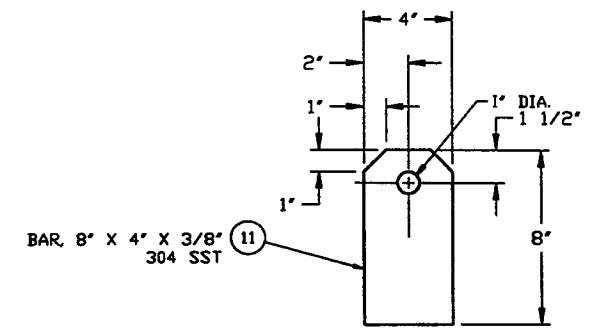
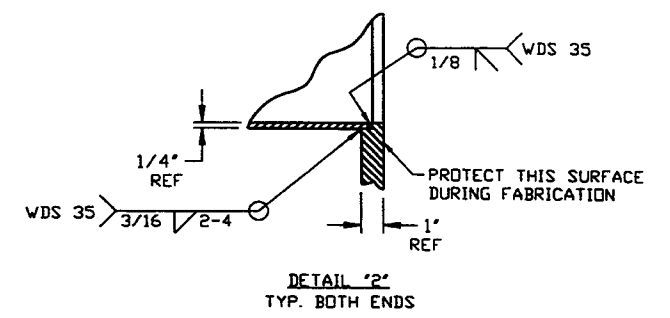
//	A	.030
		.015

-A-		.015
-----	--	------

* NOTE: FINAL FINISHED LENGTH TO BE DETERMINED BY BELLOWS VENDOR.



DETAIL 1
QTY. 2
MAKE FROM V049M154-1



PROCESS SYSTEMS INTERNATIONAL INC. 20 WALRUP DR. WESTBOROUGH, MASSACHUSETTS 01581 USA			
SPOOL BE-1 72.25" ID LIGO VACUUM EQUIPMENT			
CAD FILE 4BE152	SIZE D	ENG. NO. V049-4-BE1	REV. 3
SCALE AS NOTED	SHEET 2	OF 2	