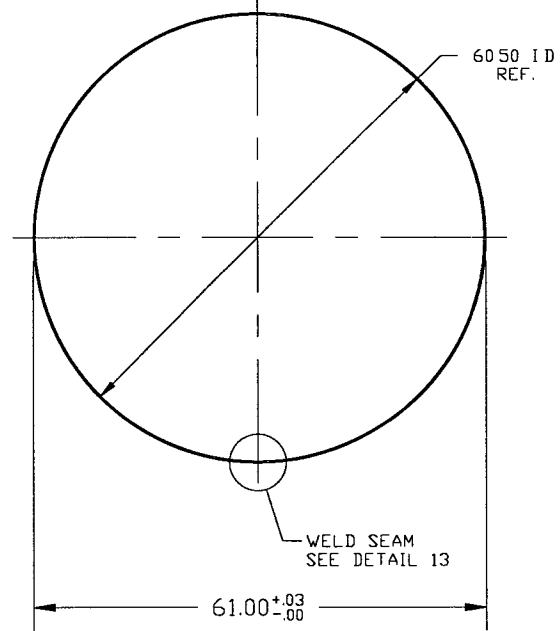


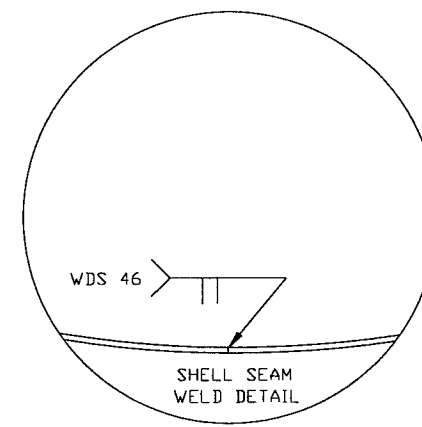
DETAIL "3"
QTY: 2

MAKE FROM V049M175-1

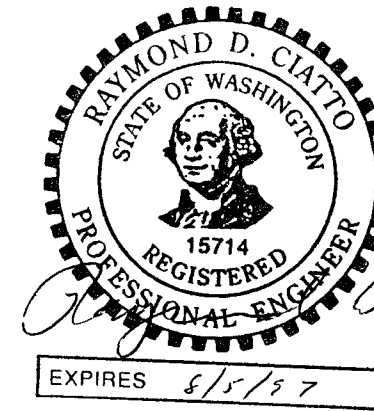


DETAIL "4"
QTY: 1

MAKE FROM V049M174-1

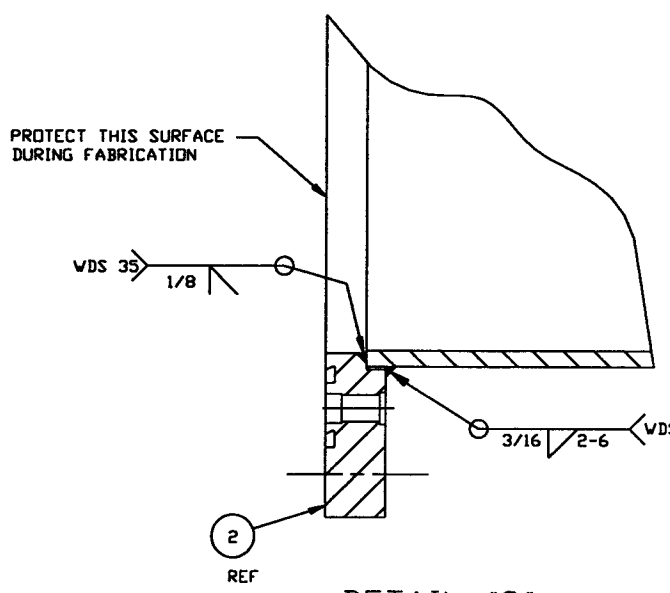


DETAIL "13"

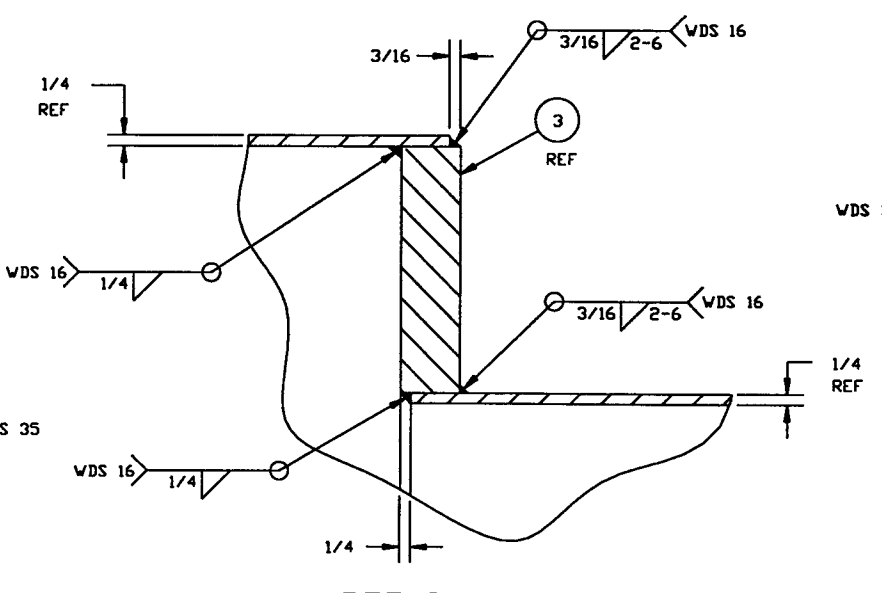


PROCESS SYSTEMS INTERNATIONAL INC. 20 WALKUP DR WESTBOROUGH, MASSACHUSETTS 01581 USA			
ADAPTER A-7A 60.50"ID x 72.25"ID LIGD VACUUM EQUIPMENT			
CAD FILE V049A7A/4A7S4A	SIZE D	DWG NO V049-4-A7A	REV 2
SCALE AS NOTED	SHEET 2 OF 5		

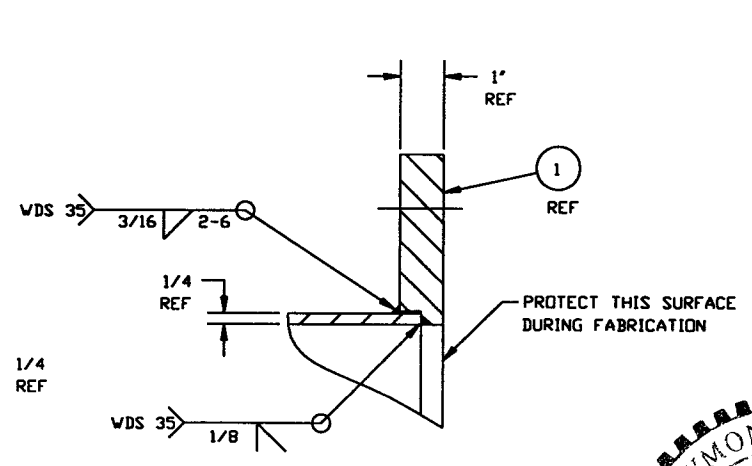
Nov 14, 1996 - 135506



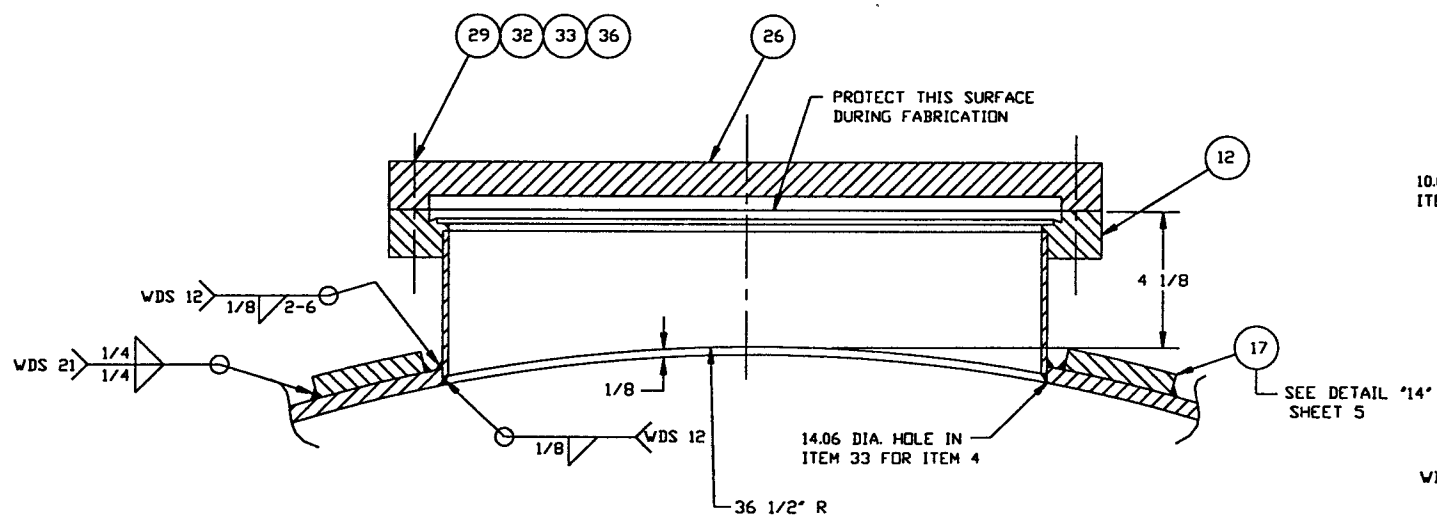
DETAIL "9"



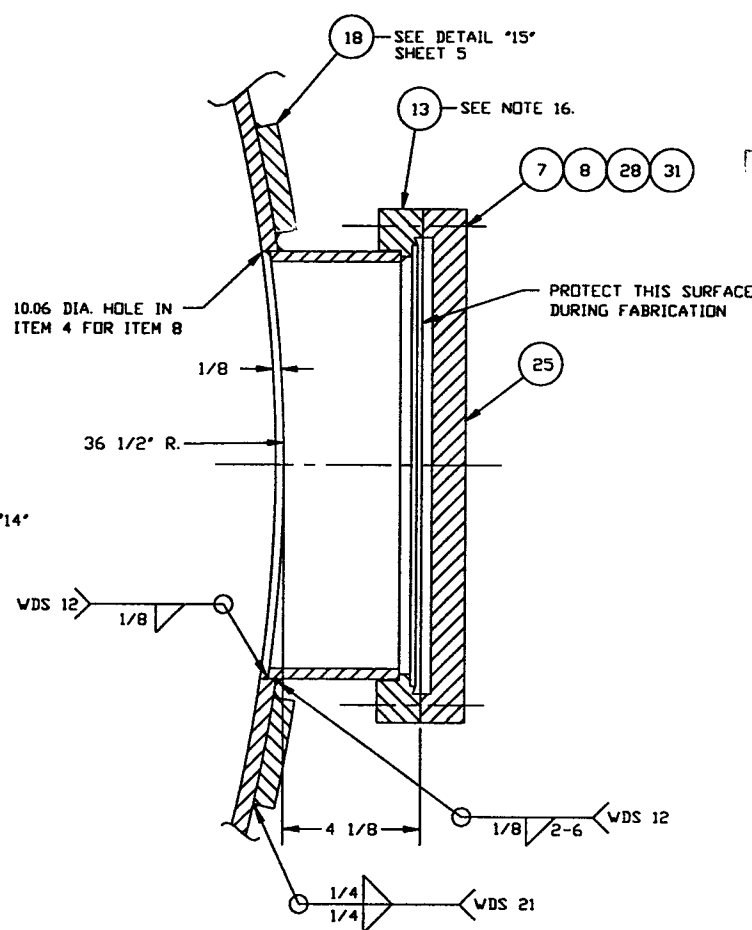
DETAIL "10"



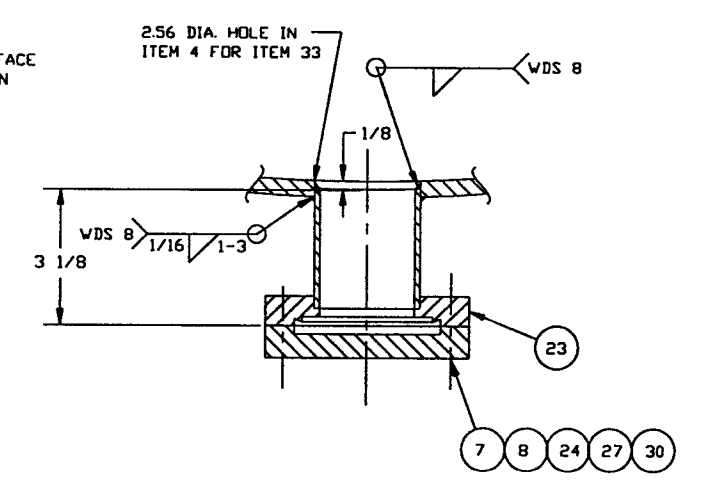
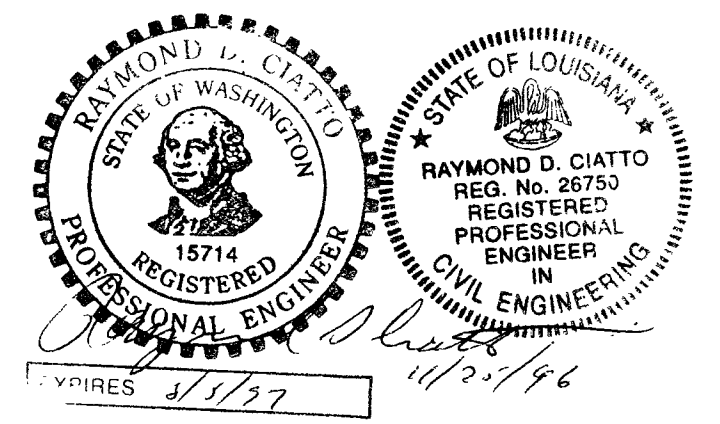
DETAIL "11"



SECTION "E"- "E"



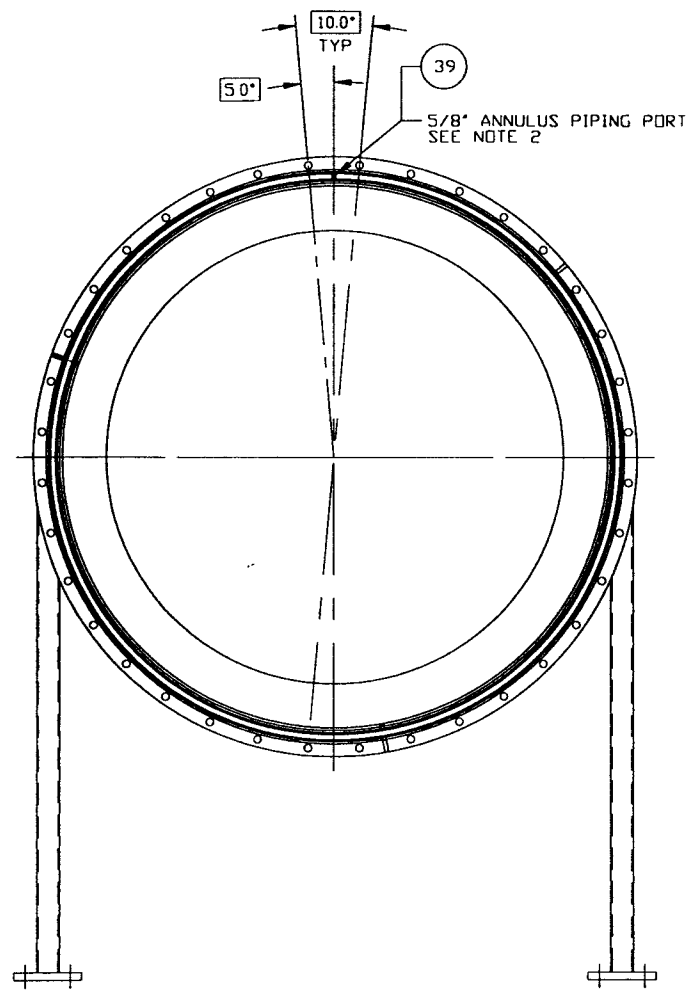
SECTION "D"- "D"



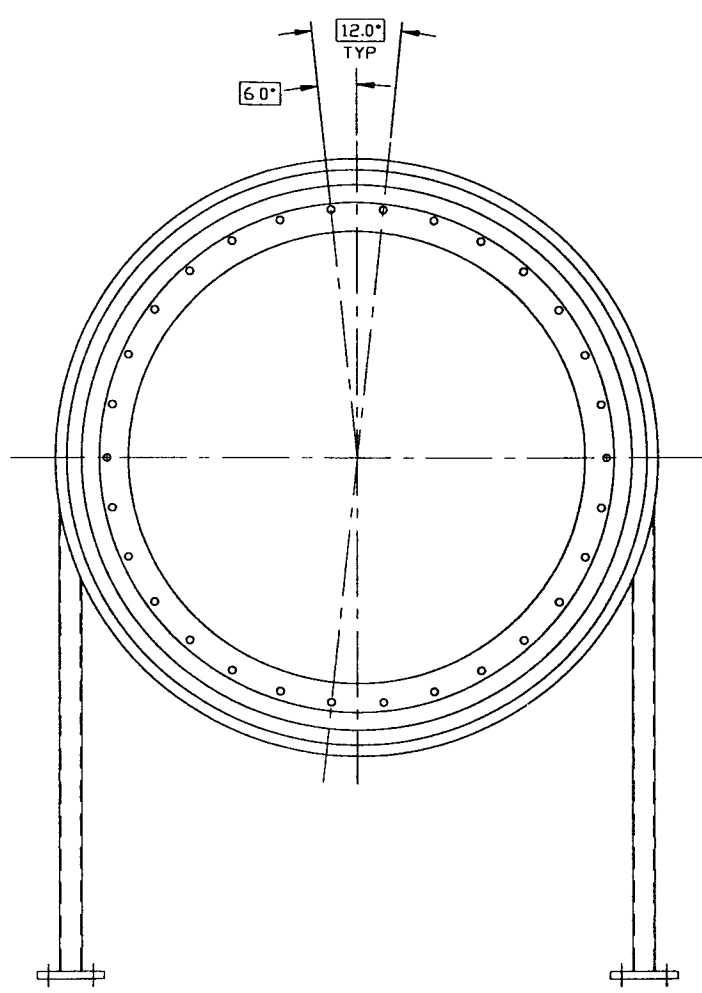
SECTION "F"- "F"

SEE SHEET 1 FOR REVISIONS

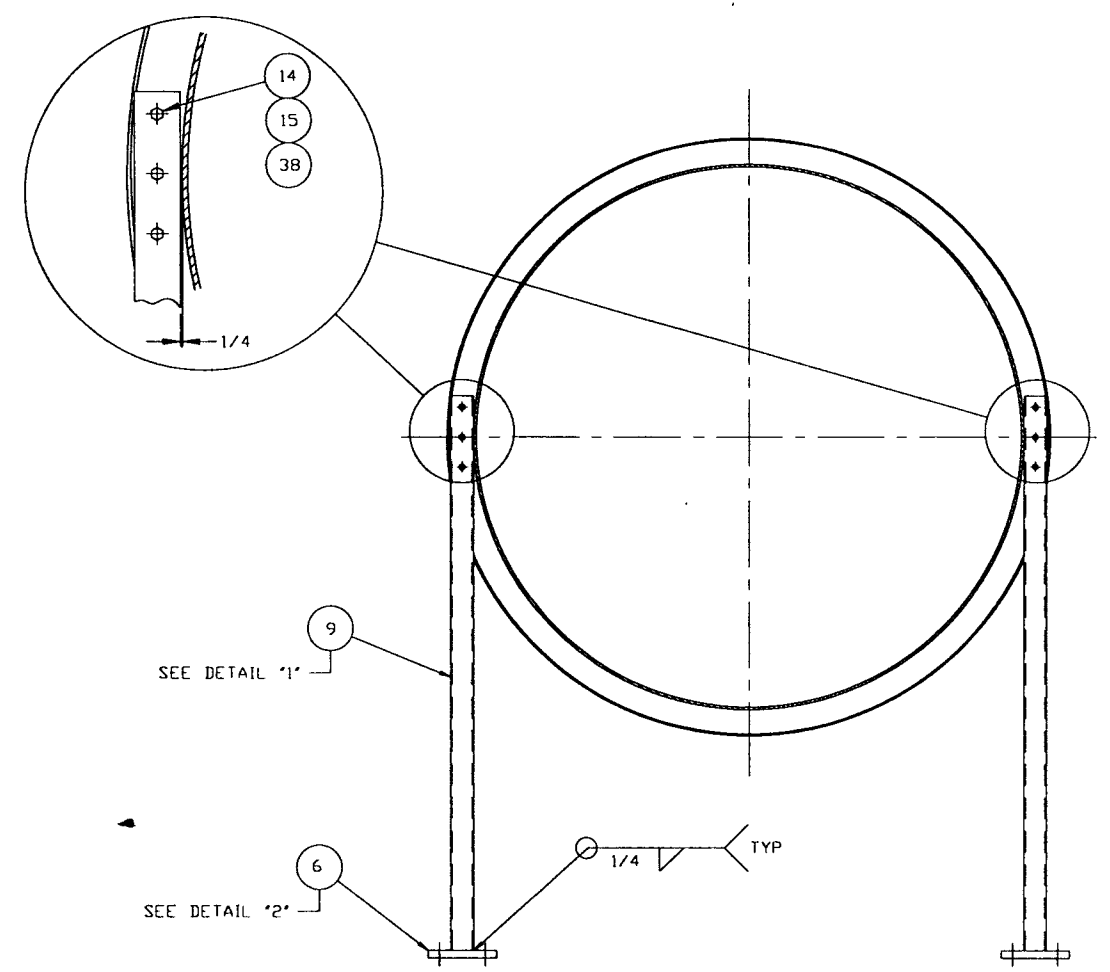
PROCESS SYSTEMS INTERNATIONAL INC. 20 BALGUP DR. WESTBOROUGH, MASSACHUSETTS 01581 USA			
ADAPTER A-7A 72 1/4" X 60 1/2" LIGD VACUUM EQUIPMENT			
CAD FILE	SIZE	REV. NO.	REV.
V049A7A/4A7AS3	D	V049-4-A7A	2
SCALE	AS NOTED	SHEET	3 OF 5



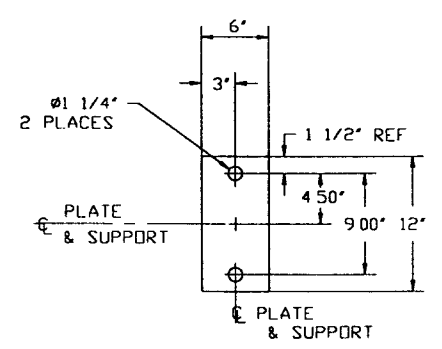
VIEW "A"-"A"



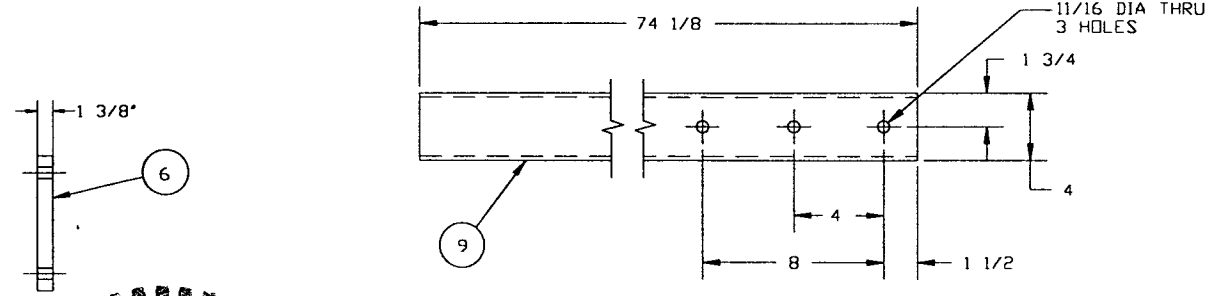
VIEW "B"-"B"



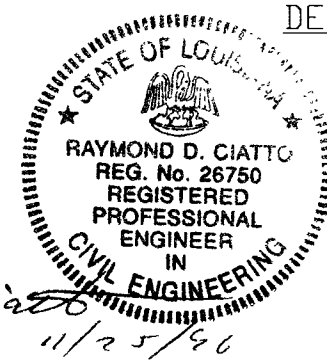
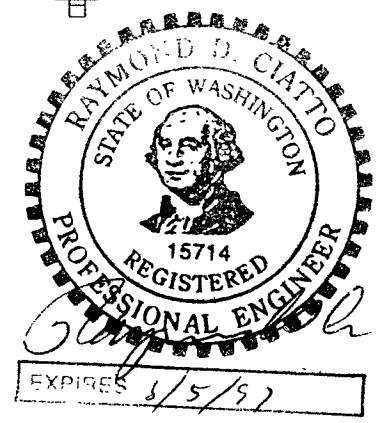
SECTION "C"-"C"



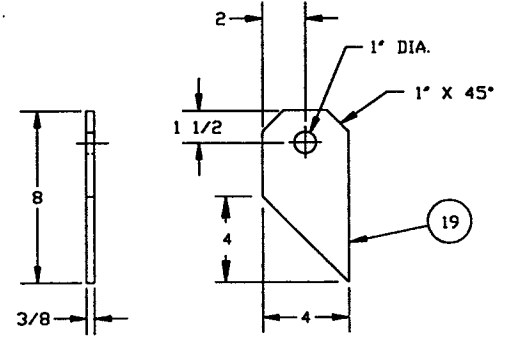
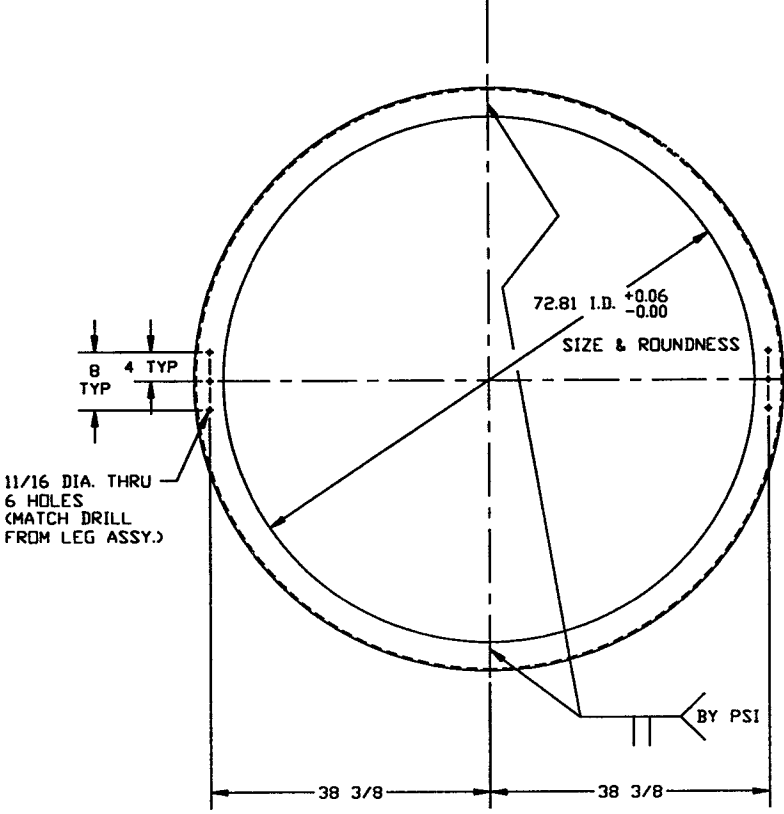
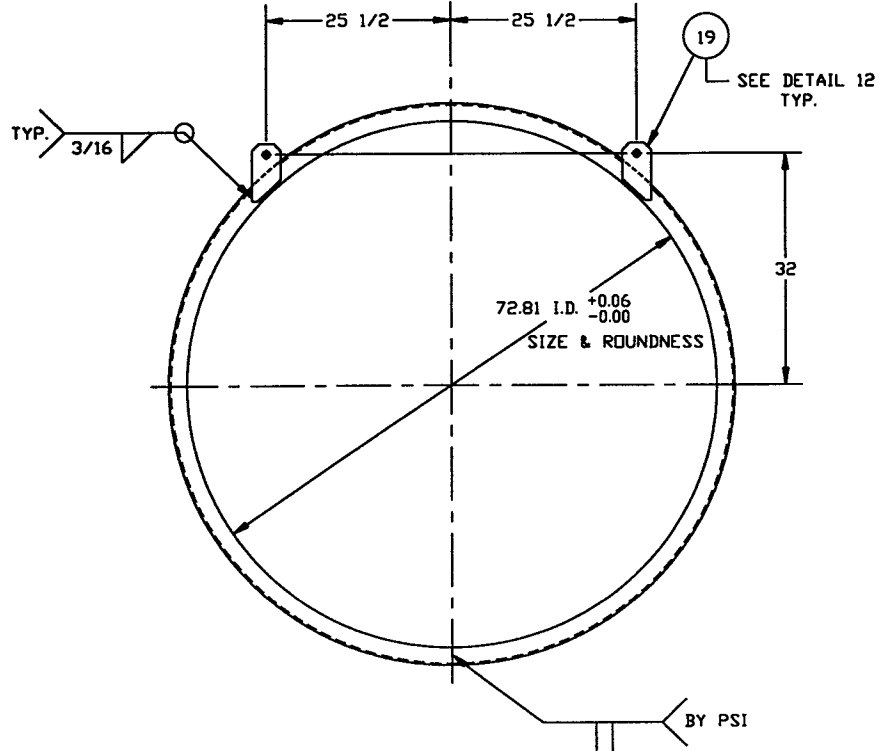
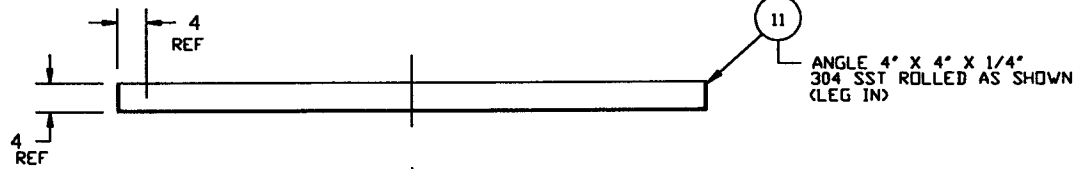
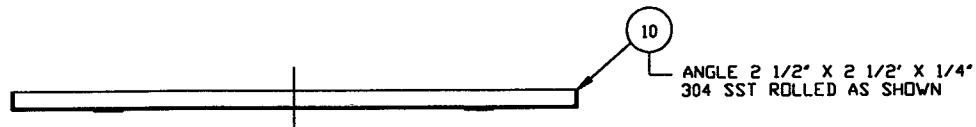
DETAIL "2"
QTY 2



DETAIL "1"
QTY. 2



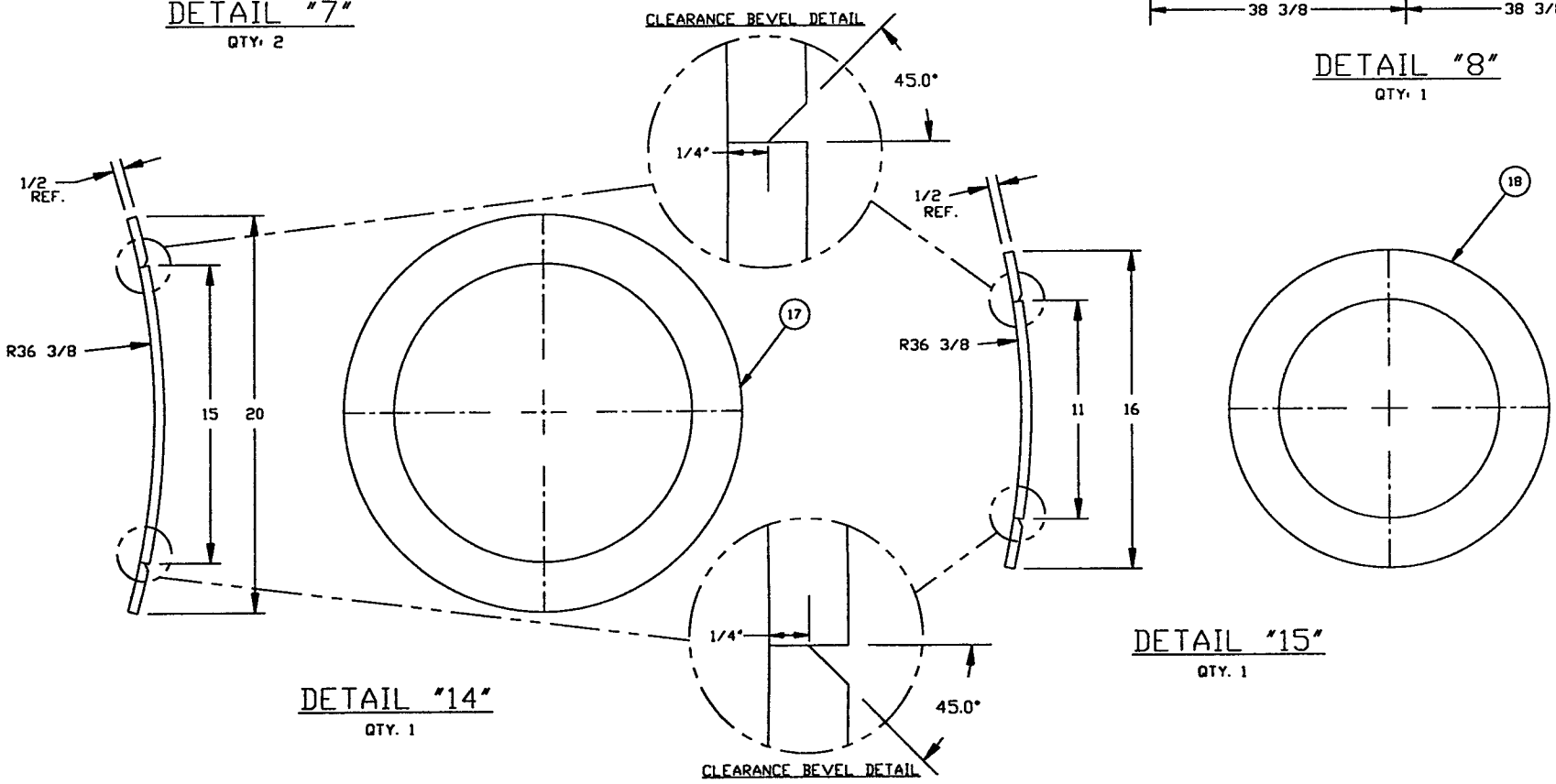
PROCESS SYSTEMS INTERNATIONAL, INC. 20 WALKUP DR. WESTBOROUGH, MASSACHUSETTS 01581 USA			
ADAPTER A-7A 60.50"ID x 72.25"ID LIGO VACUUM EQUIPMENT			
CAD FILE V0494A7A/4A7AS2	SIZE D	DWG. NO. V049-4-A7A	REV. 2
SCALE AS NOTED	SHEET 4 OF 5		



DETAIL "7"
QTY. 2

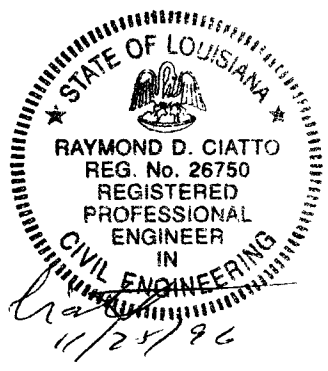
DETAIL "8"
QTY. 1

DETAIL "12"
QTY. 4



DETAIL "14"
QTY. 1

DETAIL "15"
QTY. 1



PROCESS SYSTEMS INTERNATIONAL INC. 20 WALCUP DR. WESTBOROUGH, MASSACHUSETTS 01581 USA			
ADAPTER A-7A 60.50"ID x 72.25"ID LIGD VACUUM EQUIPMENT			
CAD FILE	SIZE	ENG. NO.	REV.
V049A7A/4A7A55	D	V049-4-A7A	2
SCALE	AS NOTED	SHEET	5 OF 5

8 7 6 5 4 3 2 1

REV. 02. 1996 - 08 3607