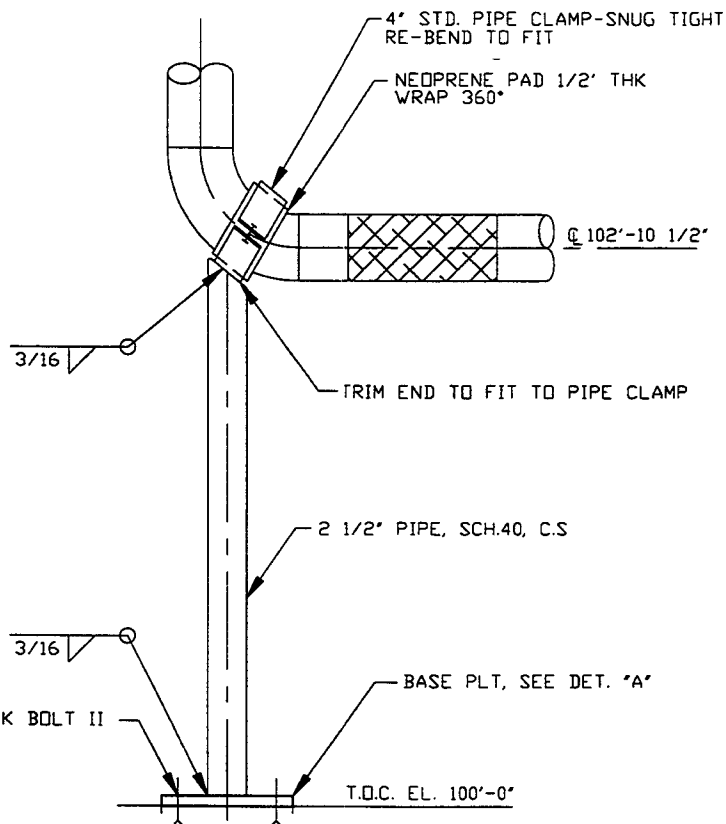
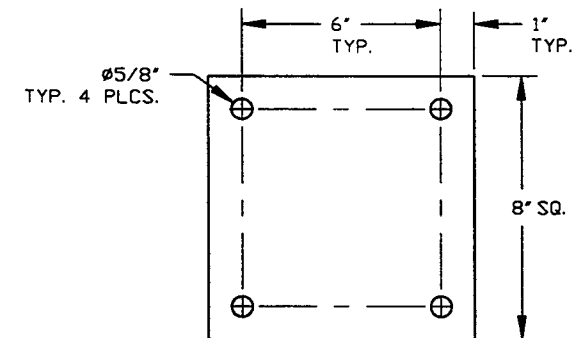
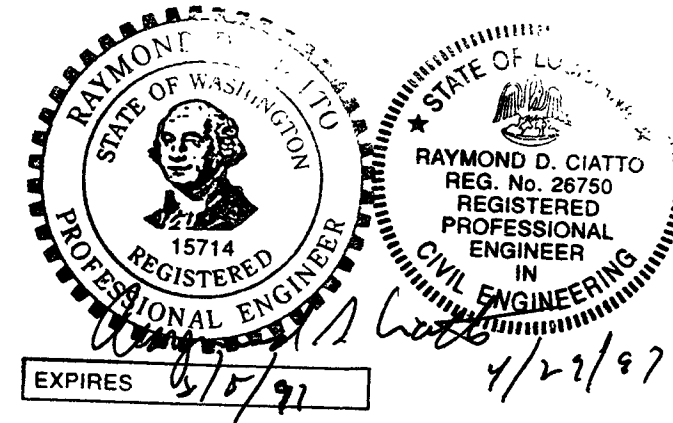


PS-6A
2 REQ'D
SCALE: 1 1/2"=1'-0"



PS-6B
2 REQ'D
SCALE: 1 1/2"=1'-0"



BASE PLATE
5/8" THK C.S.
SCALE: 1/4"

- NOTES:
1.) MAT'L & FABRICATION BY FIELD CONTRACTOR
2.) PAINT PER PSI SPEC V049-2-139

PROPRIETARY AND CONFIDENTIAL
THIS DOCUMENT CONTAINS PROPRIETARY INFORMATION BELONGING TO PROCESS SYSTEMS INTERNATIONAL, INC. OR ITS AFFILIATED COMPANIES AND SHALL BE USED ONLY FOR THE PURPOSE FOR WHICH IT WAS SUPPLIED. IT SHALL NOT BE COPIED, REPRODUCED OR OTHERWISE USED FOR SHALL SUCH INFORMATION BE FURNISHED IN WHOLE OR IN PART TO OTHERS EXCEPT IN ACCORDANCE WITH THE TERMS OF ANY AGREEMENT UNDER WHICH IT WAS SUPPLIED OR WITH THE PRIOR WRITTEN CONSENT OF PROCESS SYSTEMS INTERNATIONAL, INC. AND SHALL BE RETURNED UPON REQUEST.

V049-4-014	PIPING G.A. CORNER STATION
V049-4-021	SPEC FOR INSTALLATION/CDMM.
DWG. NO.	DESCRIPTION
REFERENCE DRAWINGS	

UNLESS OTHERWISE SPECIFIED	
DIMENSIONS ARE IN INCHES	
TOLERANCES:	
FRACTIONAL ±	
ANGULAR APPROX 25°-30° BEND ±2°	
THREE PLACE DECIMAL ±.010	
FINISHED SURFACE IN	
BREAK CORNERS: IN OUT	
REMOVE ALL BURRS	
DO NOT SCALE THIS DWG.	0 RELEASED FOR CONSTRUCTION
USED ON:	REV. DESCRIPTION
NEXT ASS'Y:	ISSUE DESCRIPTION

PROCESS SYSTEMS INTERNATIONAL, INC. 20 WALKUP DR. WESTBOROUGH, MASSACHUSETTS 01581 USA	
PS-6 PIPE SUPPORT DETAIL BACKING PUMPS LIGO VACUUM EQUIPMENT	
CAD FILE V0494082	SIZE C
DWG. NO. V049-4-082	REV. 0
SCALE AS NOTED	SHEET 1 OF 1