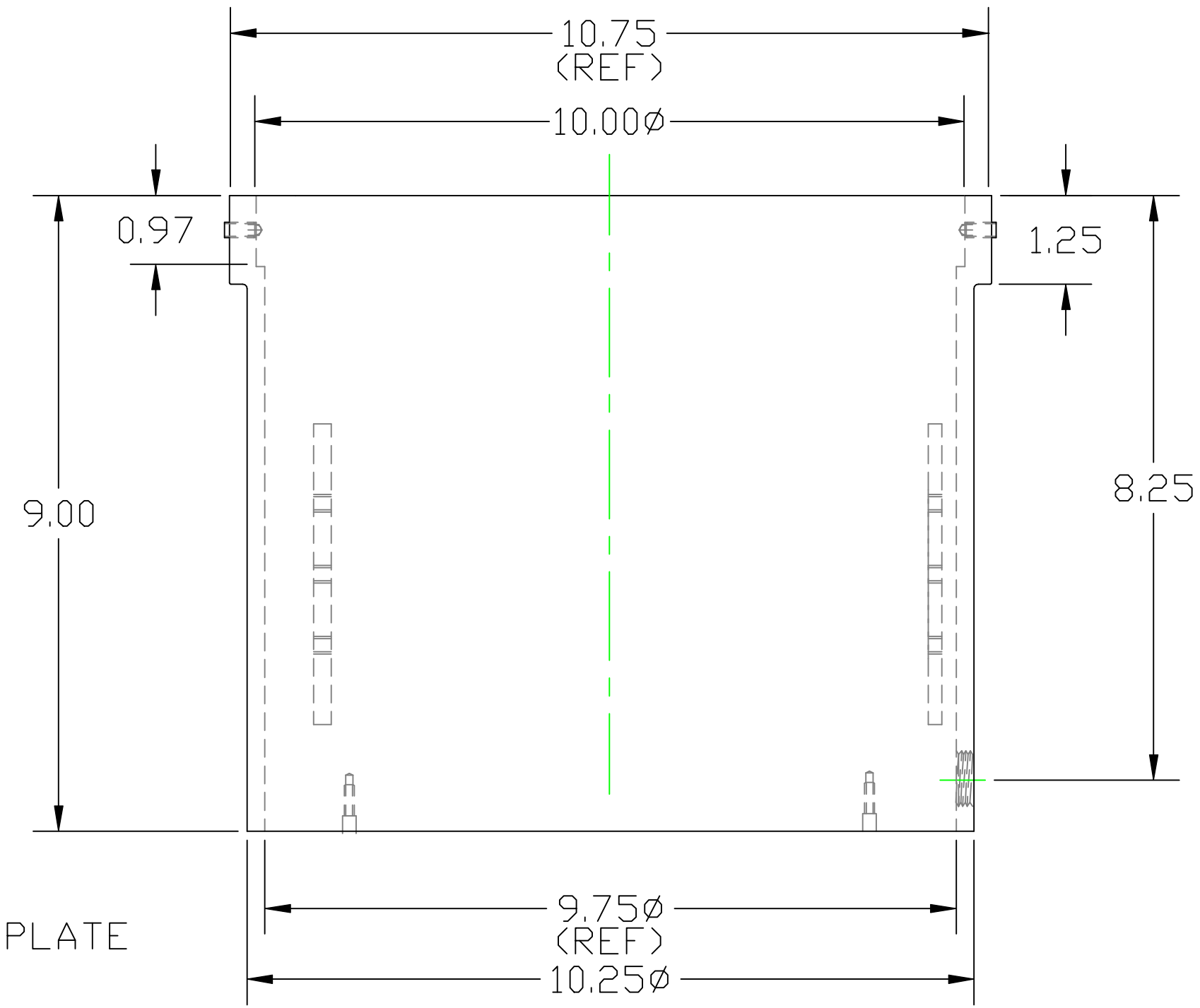


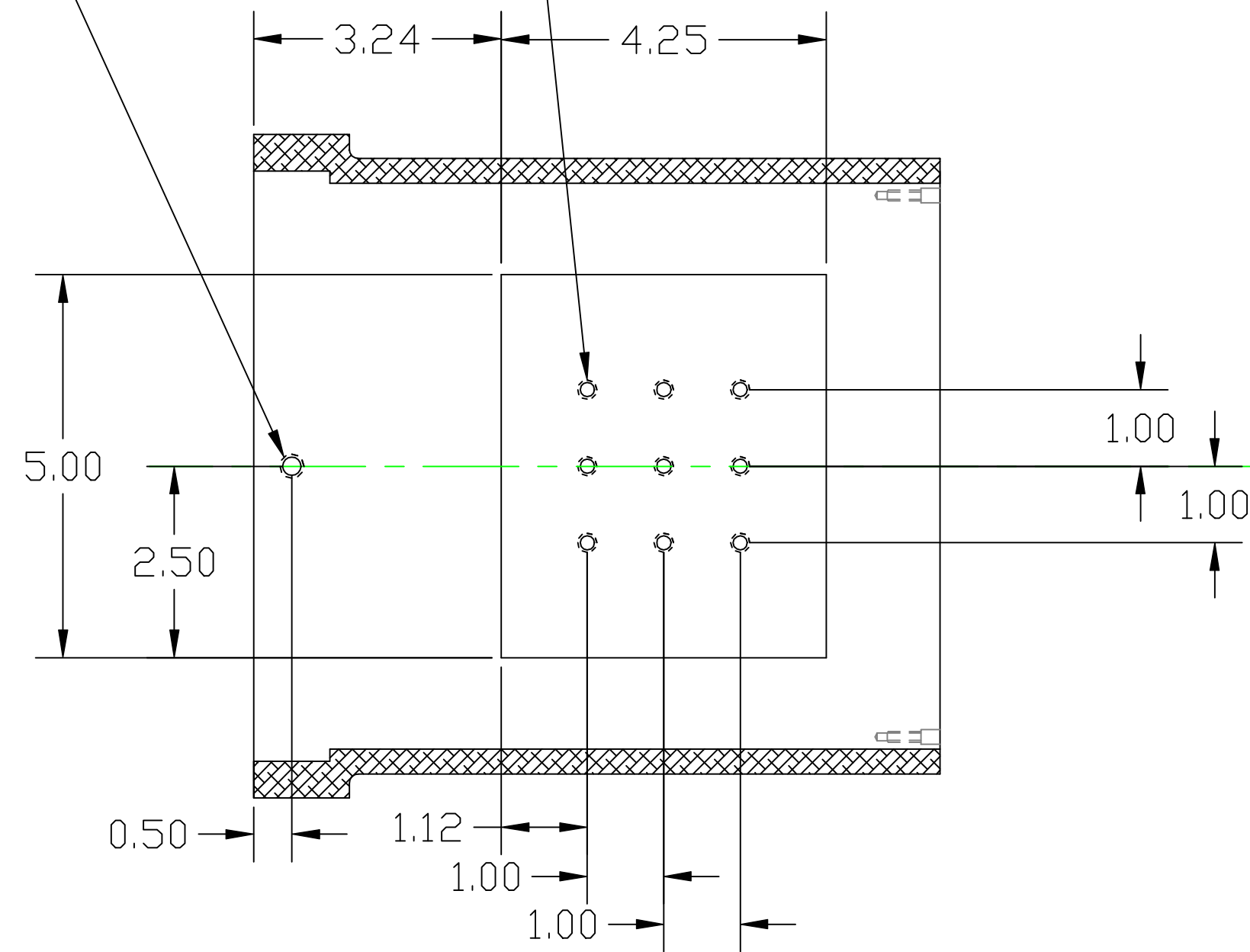
NOTES:

1. MAKE FROM 10.75Ø x .50 WALL ALUMINUM TUBING TYPE 6061-T6
2. ABRASIVE CLEAN INNER AND OUTER SURFACES
3. CLEAR ANODIZE PER MIL-A-8625

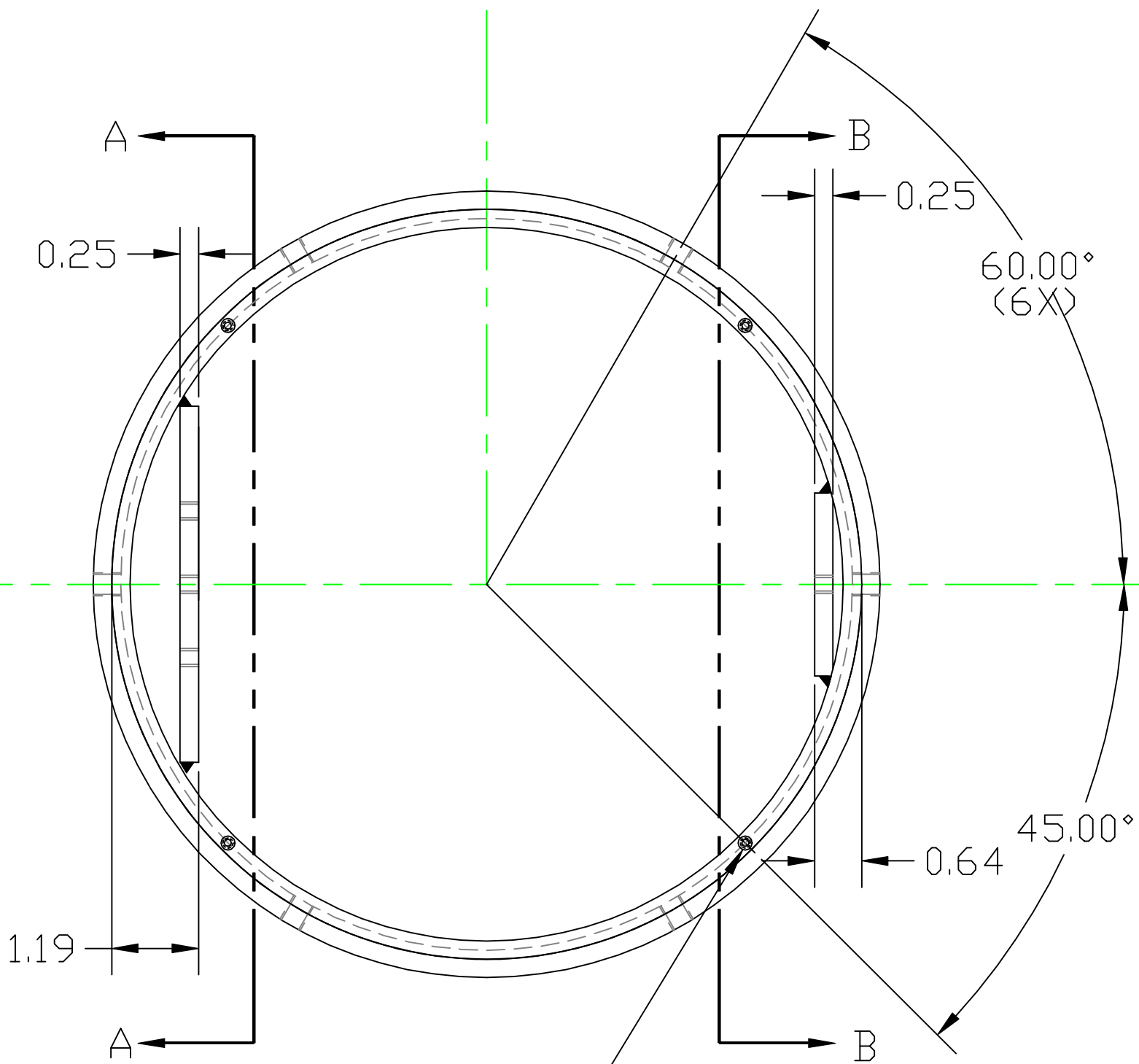


5/16-18 UNC-2B
THRU (6) PLC'S

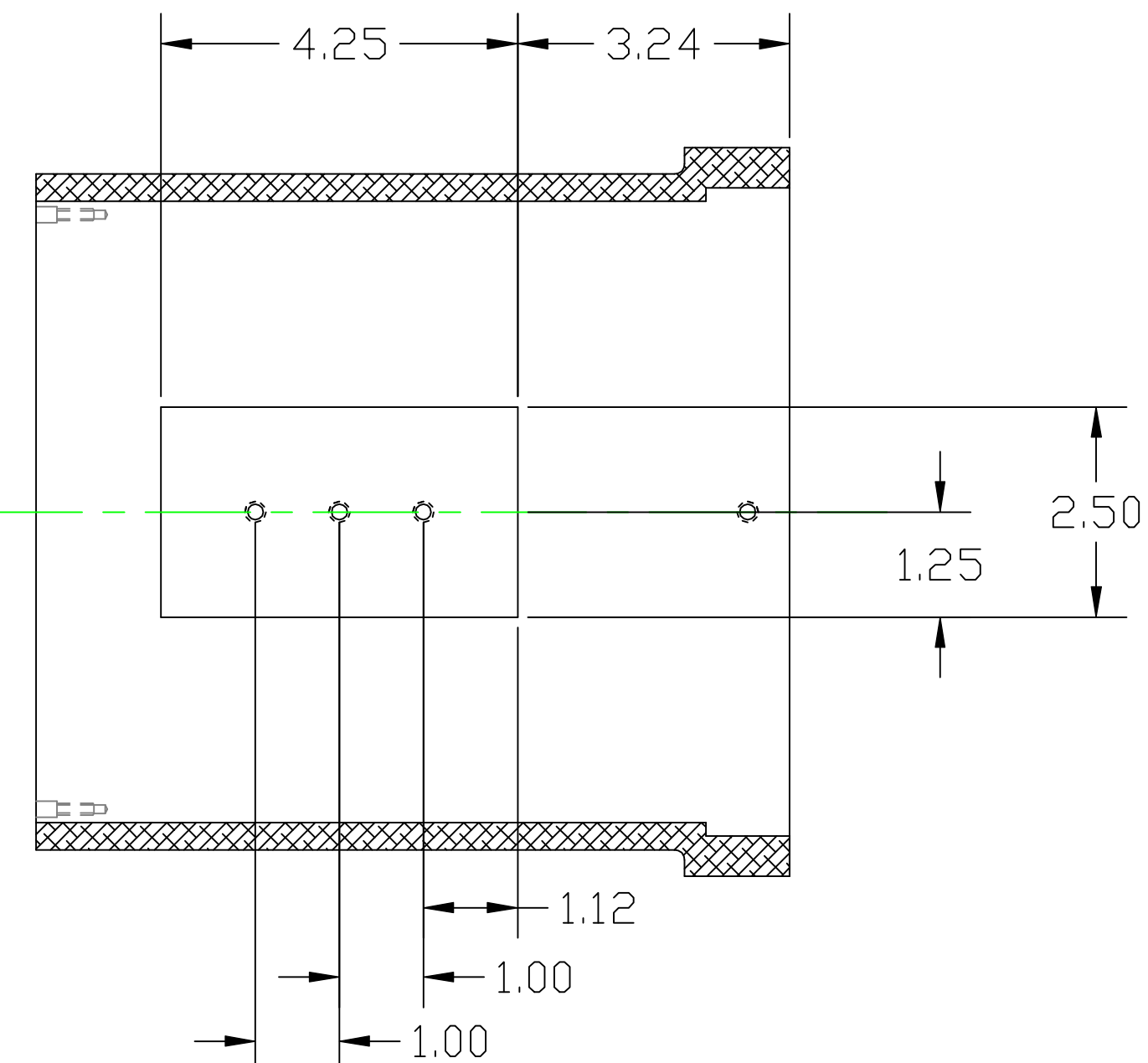
1/4-20 UNC-2B THRU .25 THK PLATE
(12) PLC'S



SECTION A-A



0.19Ø x .25 DP
PLUS 6-32 UNC-2B
x.75 DP (4) PLC'S



SECTION B-B

		UNLESS OTHERWISE SPECIFIED DIMENSIONS ARE IN INCHES												LIGO CALIFORNIA INSTITUTE OF TECHNOLOGY MASSACHUSETTS INSTITUTE OF TECHNOLOGY			
		TOLERANCES: FRACTIONAL ± 1/16(16) ANGULAR ± 1° TWO PLACE DECIMAL ± .01(.025) THREE PLACE DECIMAL ± .005(.013)		FINISHED SURFACE RMS 63 BREAK CORNERS IN: OUT: .02 REMOVE ALL BURRS		B ADDED NOTE 1						MASON 9/98		CAMERA MOUNTING TUBE VIDEO IMAGING ASSEMBLY ASC ALIGNMENT			
		MATERIAL: 6061-T6 ALUM HEAT TREAT: NONE FINISH: SEE NOTE 1				A INITIAL RELEASE						MASON 5/98					
DWG. NO.		DESCRIPTION		USED ON: D970211-00-D		NEXT ASSY: -		REV		DESCRIPTION		DCC SYS DET CDS VE CC BT CHECK DRWN DATE		CAD FILE: D970213-B.dwg		SIZE: D DWG. NO. D970213-B-D	
		REFERENCE DRAWINGS								ISSUE DESCRIPTION				SCALE: HALF		SHEET: 1 of 1	