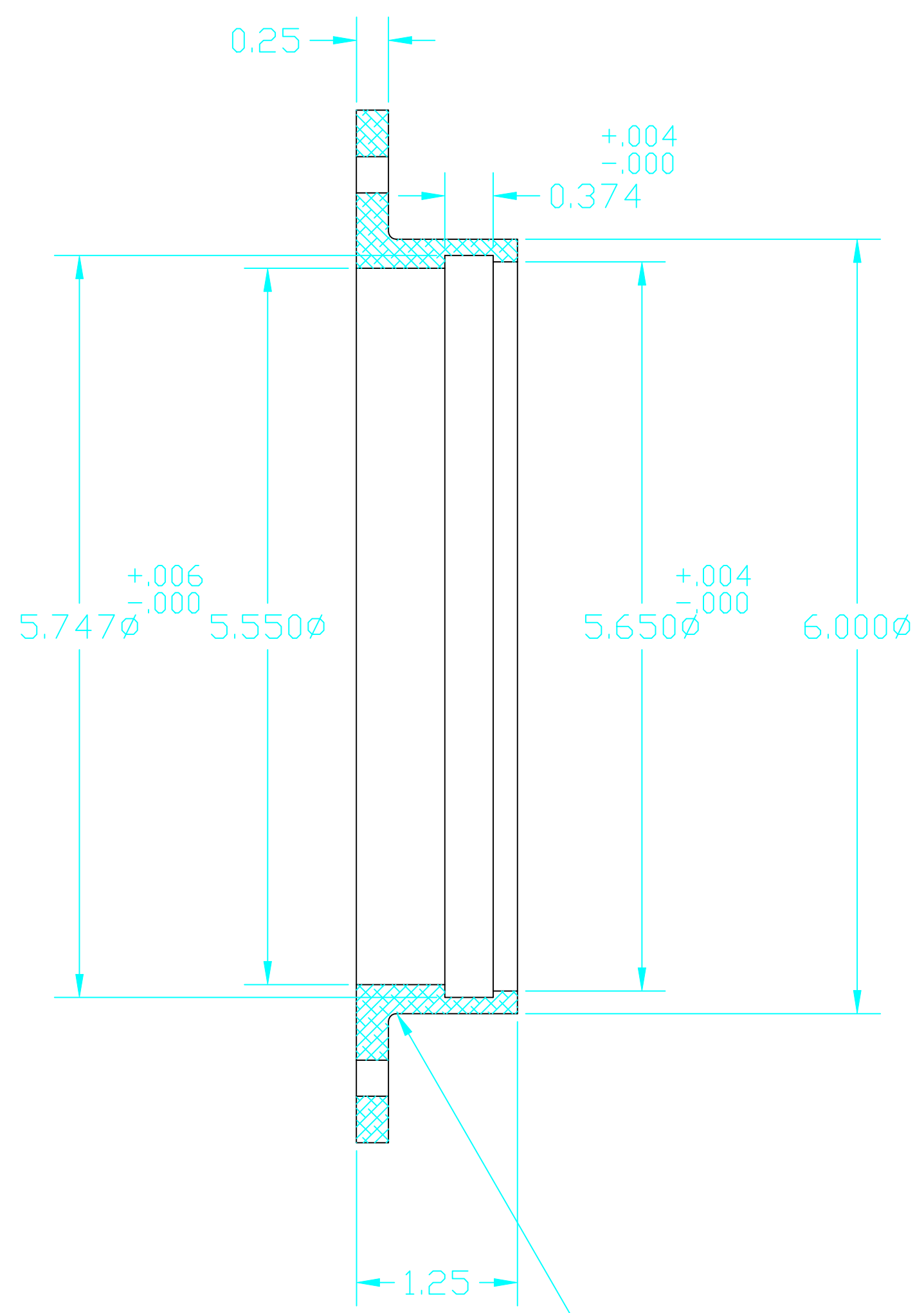
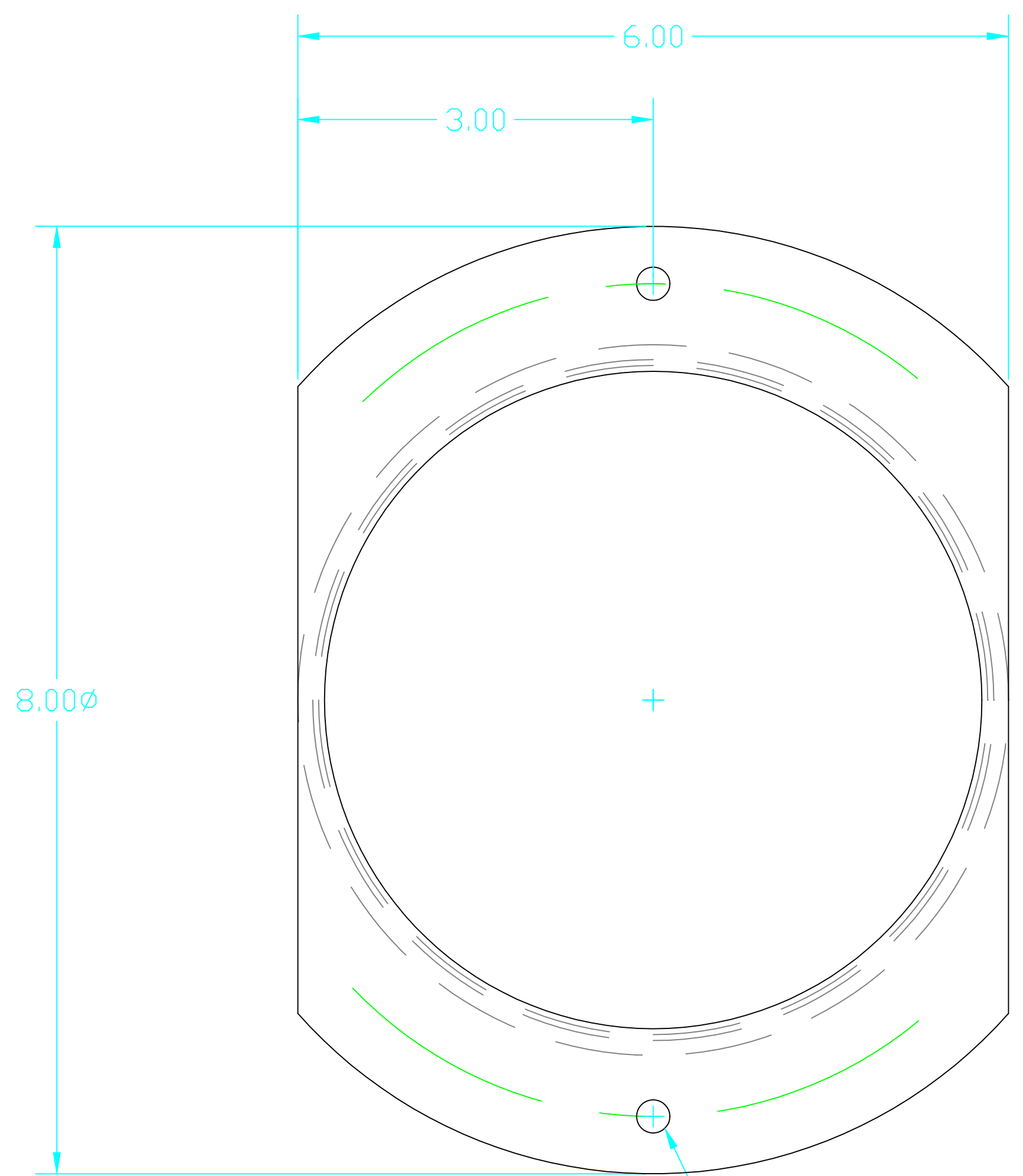


6 5 4 3 2 1

D
C
B
A

NOTES:



.281ø THRU (2) HOLES EQ SP ON A
7.000ø B.C.

UNLESS OTHERWISE SPECIFIED
DIMENSIONS ARE IN FEET (cm)
TOLERANCES: FRACTIONAL ±1/16(.16) FINISHED SURFACE RMS 63
ANGULAR ±1° BREAK CORNERS: .02
TWO PLACE DECIMAL ±.01(.025) REMOVE ALL BURRS
THREE PLACE DECIMAL ±.005(.013)

MATERIAL: 6061-T6 ALUM. HEAT TREAT: - FINISH: NONE
USED ON: D970190-00-D NEXT ASS'Y: -

REF	QTY	PART or DRWG No.	CDS										MATERIAL	
PARTS and MATERIAL LIST														
A		INITIAL RELEASE											MASON	5/98
00		PRE-RELEASE											MASON	6/97
REV		DESCRIPTION	DCC	SYS	DET	CDS	VE	CC	BT	CHECK	DRWN	DATE		
ISSUE DESCRIPTION													SCALE FULL	SHEET 1 of 1

CALIFORNIA INSTITUTE OF TECHNOLOGY
MASSACHUSETTS INSTITUTE OF TECHNOLOGY
SEAL MOUNT - LEVER
OPTICAL LEVER ASSY
SUPPORT STRUCTURE
CAD FILE: D970207-A SIZE: C DWG. NO.: D970207-A-D
SCALE: FULL SHEET: 1 of 1

6 5 4 3 2 1