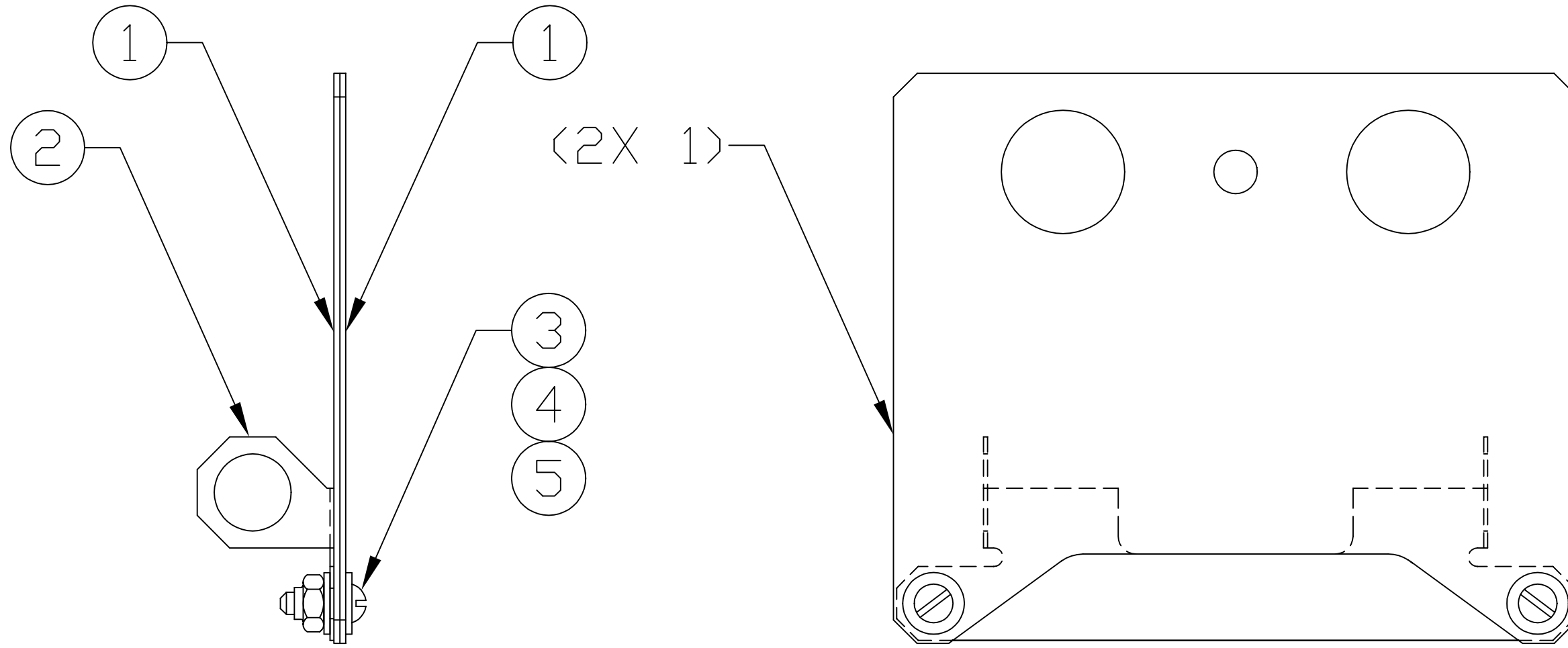


NOTES: (UNLESS OTHERWISE SPECIFIED)
 ⚠ FOR VENDOR INFORMATION, SEE TOP ASSEMBLY MATERIALS LIST D970006.



REF	QTY	PART or DRWG No.	NOMENCLATURE or DESCRIPTION	MATERIAL
5	2	McM-Carr #91839A005	#4-40 HEX NUT, "FLEXLOC"	stainless steel
4	4	McM-Carr #92141A005	#4 NDM, .13 ID, .31 OD, .032 THK FL WASH	stainless steel
3	2	McM-Carr #91810A108	#4-40 X .38 LG SLOTTED RD HD SCR	stainless steel
2	1	D970167	BRACKET	-
1	2	D970169	PROTECTIVE SHEET	-

PARTS and MATERIAL LIST ⚠

		UNLESS OTHERWISE SPECIFIED DIMENSIONS ARE IN INCHES												LIGO CALIFORNIA INSTITUTE OF TECHNOLOGY MASSACHUSETTS INSTITUTE OF TECHNOLOGY					
		TOLERANCES: FRACTIONAL ± ANGULAR ± ANGULARMACH ± BEND ± TWO PLACE DECIMAL ±		THREE PLACE DECIMAL ± FINISHED SURFACE RMS BREAK CORNERS IN OUT REMOVE ALL BURRS												BEAM SPLITTER OPTIC CARRIER PROTECTIVE SHEET ASSEMBLY			
		MATERIAL:		HEAT TREAT:		FINISH:												CONLEY	
		USED ON:		NEXT ASS'Y: D961461												CONLEY CDYNE 4-29-97			
DWG. NO.		DESCRIPTION		ISSUE DESCRIPTION		DCC	SYS	DET	CDS	VE	CC	BT	DRWN	CHECK	DATE	CAD FILE	SIZE	DWG. NO.	
REFERENCE DRAWINGS																D970171-B.dwg		B D970171-B-D	
																SCALE NTS		SHEET 1 OF 1	