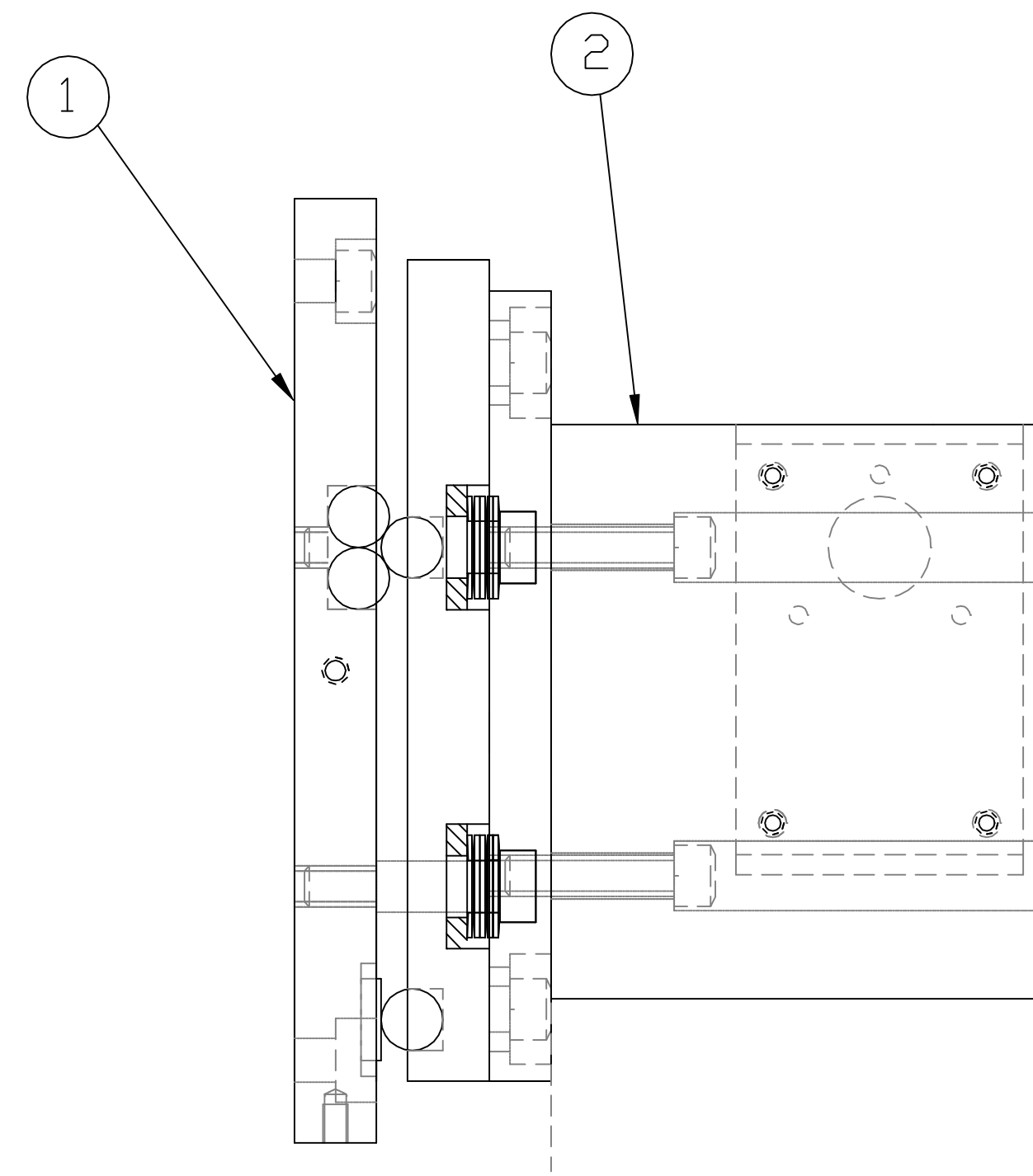
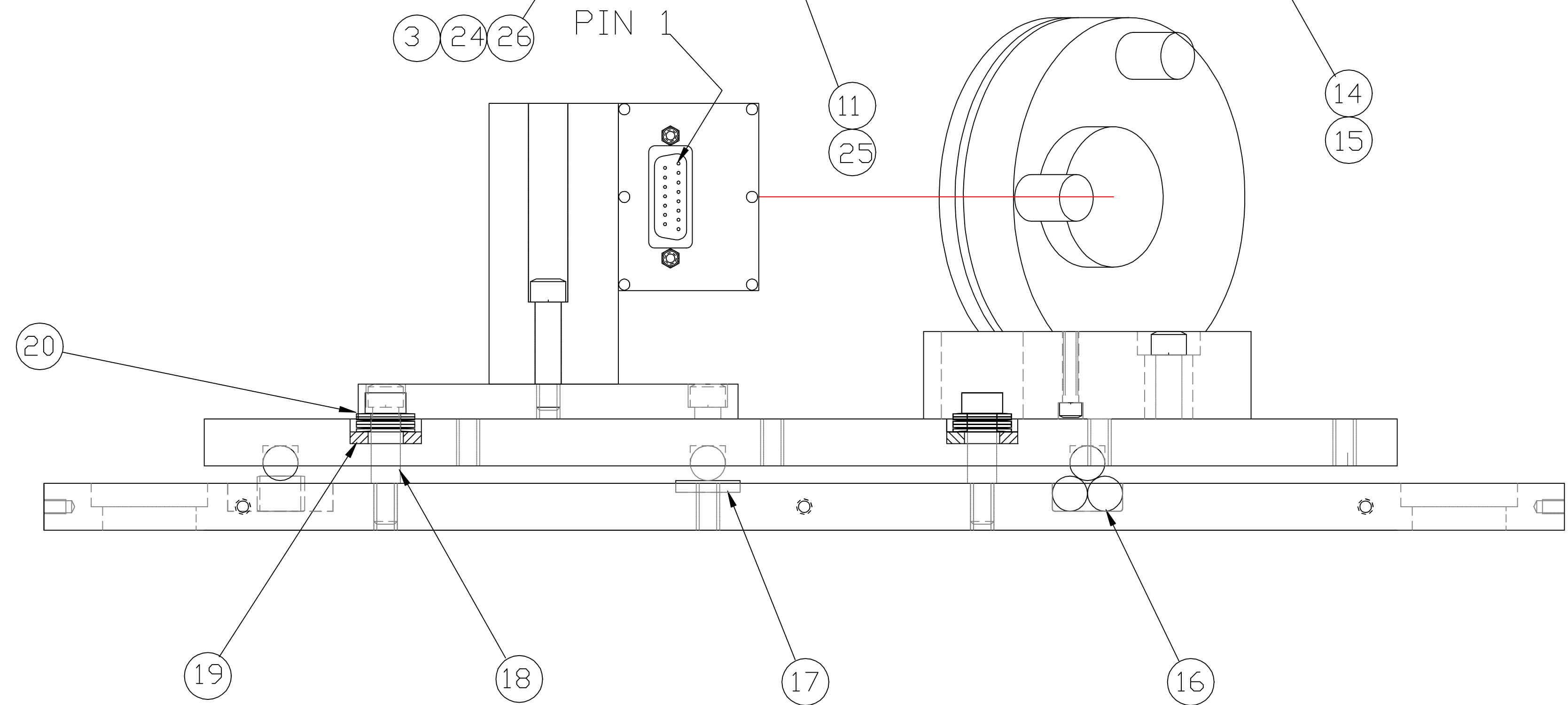
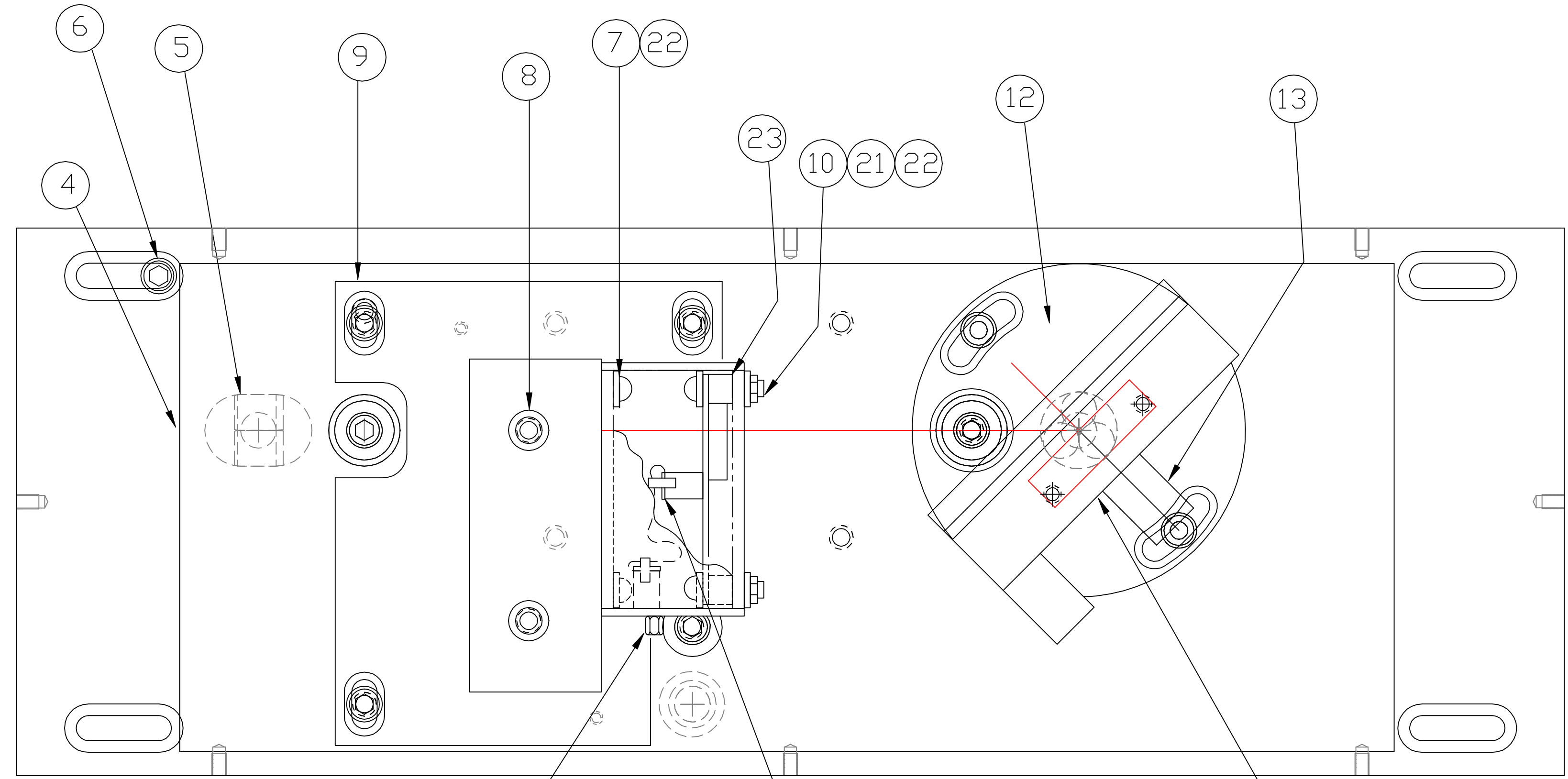


NOTES

1. ASSEMBLE BASE AND KINEMATIC PLATE WITH ITEMS 20,21, AND 22 BEFORE SILICONE ADHESIVE IS DRY TO REMOVE EXCESS.



SEE NOTE 1



26	1	205817-1	AMP	JACKPOST ASSY
25	1	52F7014	NEWARK	16 PIN FEMALE
24	1	96F3237	NEWARK	15 PIN IDC w/ 4-40
23	4	92510A715	MCMaster-CARR	#6 STANDOFF
22	8	90945A715	MCMaster-CARR	#6 FLAT WASHER
21	4	92196A150	MCMaster-CARR	6-32 x .625 SHCS
20	15	ST-6	BERG	BELLEVILLE WASHER
19	3	CD2-5	BERG	BRONZE THRUST WASHER
18	3	08022	HOLDKROME	5/16 x .75 SHLDR. SCR.
17	1	3289A62	MCMaster-CARR	CARBIDE DISK
16	6	PT4-12	BERG	3/8" BALL
15	1	FM381-095-1FS-1010-635	VLDC	1.50" MIRROR
14	1	SL38.1	NEWPORT	GIMBAL MOUNT
13	2	8321	NEW FOCUS	MRA .5" EUROTHREAD
12	1	D970108-B-D	-	GIMBAL MOUNT BASE
11	A/R	93F7903	NEWARK	16 POS. RIBBON CABLE
10	4	90730A007	MCMaster-CARR	6-32 NUT
9	1	D970159-B-D	-	DETECTOR BASE PLATE
8	2	78064	HOLDKROME	1/4-20 x 1.25 CAP SCR.
7	4	92196A146	MCMaster-CARR	6-32 x .38 LG SHCS
6	12	78056	HOLDKROME	1/4-20 x 5/8 CAP SCR.
5	2	D30-6	BERG	3/8" x .75 LG. DWL. PIN
4	1	D970104-B-D	-	KINEMATIC MOUNT PLATE
3	1	93F8143	NEWARK	STRAIN RELIEF
2	1	D970157-B-D	-	DETECTOR RISER
1	1	D970110-A-D	-	KINEMATIC BASE PLATE
REF QTY		PART NO.	SUPPLIER	MATERIAL

UNLESS OTHERWISE SPECIFIED DIMENSIONS ARE IN INCHES		
TOLERANCES: FRACTIONAL ± 1/16(.16) ANGULAR ± 1° TWO PLACE DECIMAL ± .01(.025) THREE PLACE DECIMAL ± .005(.013)	FINISHED SURFACE RMS 63 BREAK CORNERS IN: .02 REMOVE ALL BURRS	
MATERIAL:	HEAT TREAT:	FINISH:
USED ON: -	NEXT ASS'Y: -	

B	REDESIGNED THE PHOTO DIODE ASSEMBLY	SMITH	9-98								
A	INITIAL RELEASE	MASDN	5/98								
00	PRE-RELEASE	K.MASDN	5/2/97								
REV	DESCRIPTION	DCC	SYS	DET	CDS	VE	CC	BT	CHECK	DRWN	DATE

**LIGO** CALIFORNIA INSTITUTE OF TECHNOLOGY  
MASSACHUSETTS INSTITUTE OF TECHNOLOGY

POSITION DETECTOR ASSY.  
OPTICAL LEVER

CAD FILE: D970156-B.DWG  
SCALE: FULL

SIZE: D  
SHEET: 1 of 1