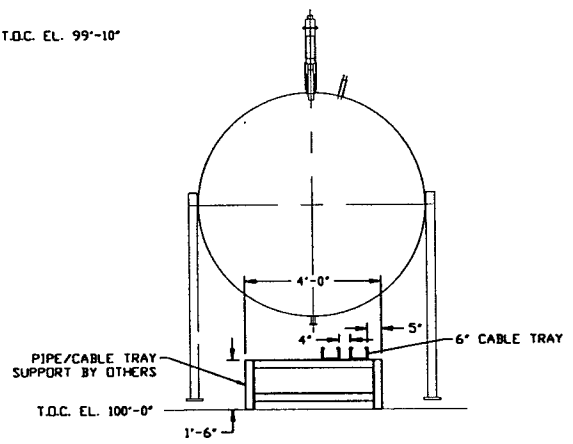
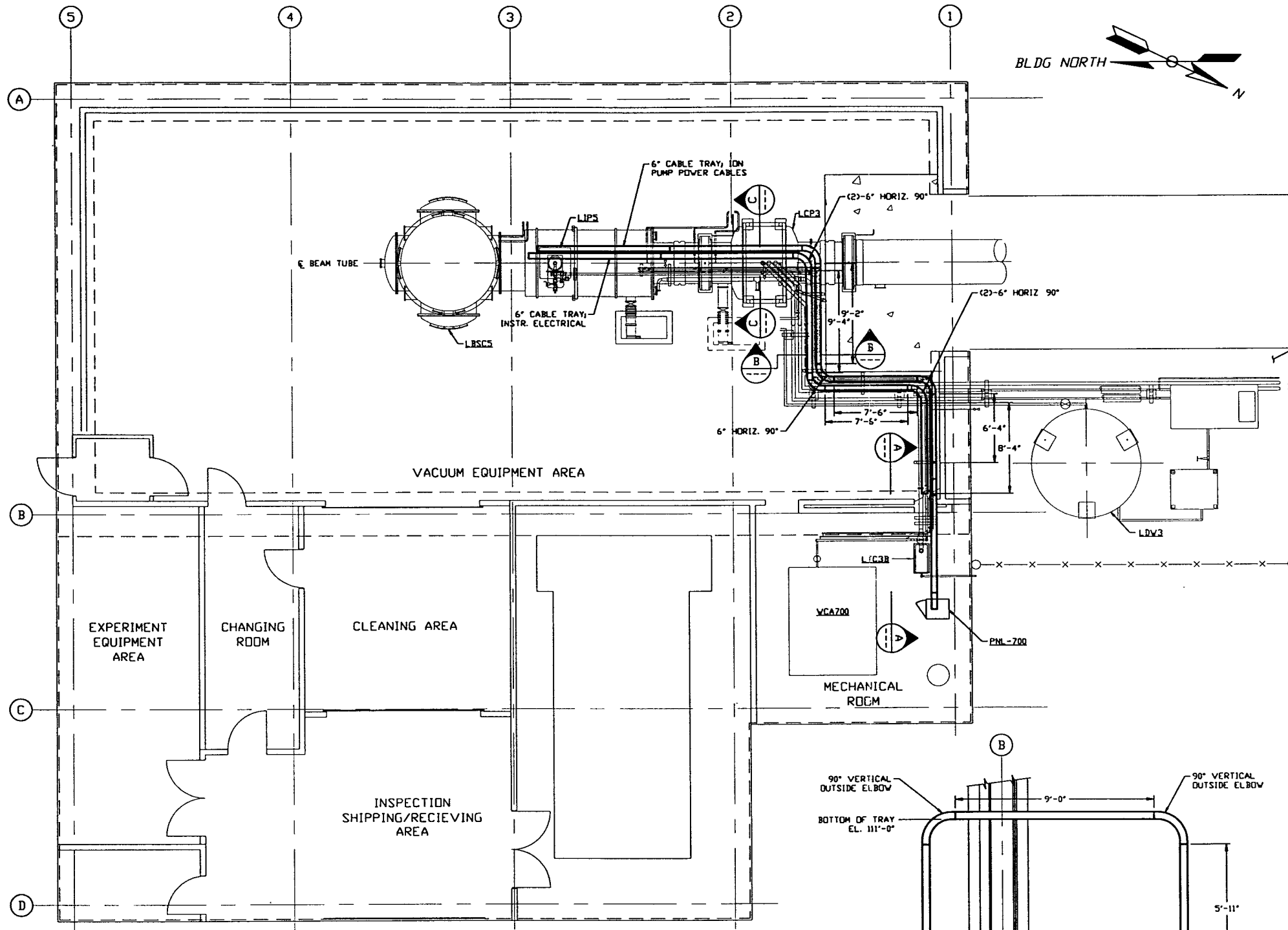
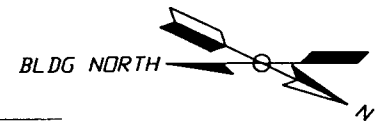
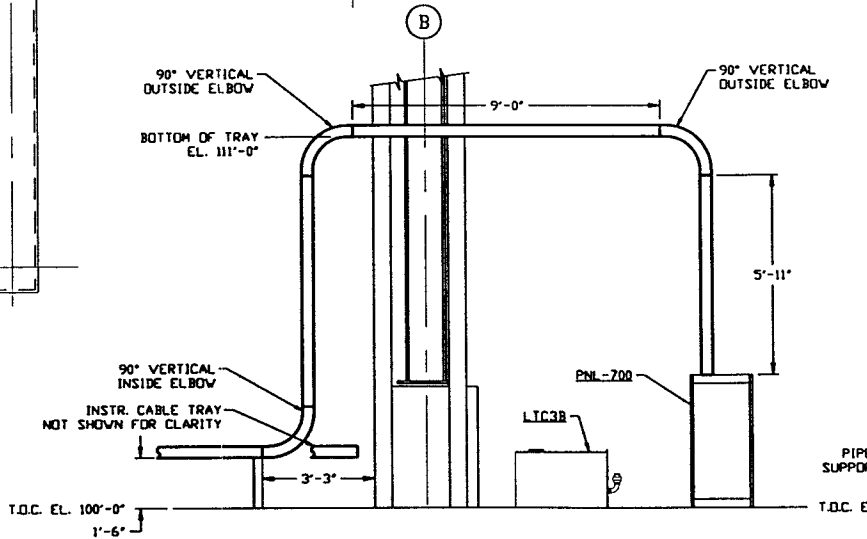


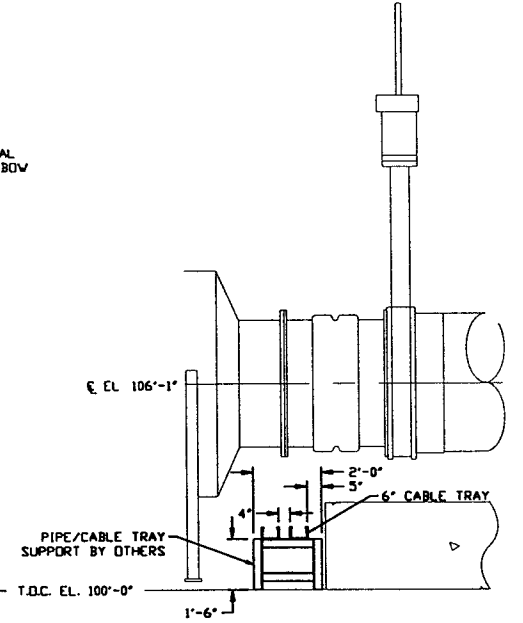
- NOTES:**
- FOR GENERAL NOTES & LEGEND SEE PSI DWG. #V049-3-001 SHT. 1.
  - FOR LIST OF CIVIL CONTRACTOR REFERENCE DWGS. WITH CURRENT REVISIONS SEE PSI DWG. #V049-3-001 SHT. 2.
  - ALL CABLE TRAY LENGTHS ARE 12'-0" UNLESS OTHERWISE SPECIFIED.
  - ALL CABLE TRAY SHALL BE GROUNDED PER N.E.C.
  - ALL CABLE TRAY SHALL BE FIELD SUPPORTED.
  - CABLE TRAY FOR ION PUMP POWER CABLES SHALL BE LABELED "DANGER HIGH VOLTAGE".
  - CABLE TRAY SHALL BE LADDER TYPE AND SHALL MEET LOAD/SPAN CLASS DESIGNATION 12A. CABLE TRAY SHALL BE OF ALUMINUM CONSTRUCTION.
  - CABLE TRAY SHALL HAVE SIDE CHANNEL FLANGES IN.
  - DIMENSIONS TO CABLE TRAY ARE MEASURED TO THE OUTSIDE EDGE OF FLANGE.



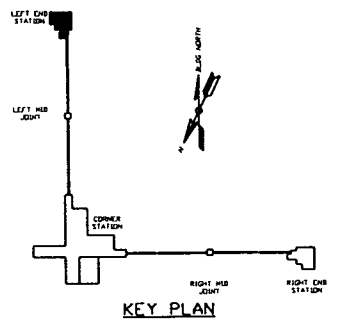
**SECTION C** REF. THIS SHT.  
SCALE: 3/8" = 1'-0"



**SECTION A** REF. THIS SHT.  
SCALE: 3/8" = 1'-0"



**SECTION B** REF. THIS SHT.  
SCALE: 3/8" = 1'-0"



**LEFT END STATION PLAN @ EL. 100'-0"**

**LIGO-D970137-00-V**

**PROCESS SYSTEMS INTERNATIONAL, INC.**  
20 WALKUP DR. WESTBOROUGH, MASSACHUSETTS 01581 USA

**CABLE TRAY PLAN**  
**LIGO VACUUM EQUIPMENT**  
**LOUISIANA SITE**  
**LEFT END STATION**

CAB FILE V0493702	SIZE D	DWG. NO. V049-3-702	REV. 0
SCALE 3/16" = 1' - 0"		SHEET 1 OF 1	

<b>PROPRIETARY AND CONFIDENTIAL</b>				UNLESS OTHERWISE SPECIFIED DIMENSIONS ARE IN INCHES			
THIS DOCUMENT CONTAINS PROPRIETARY INFORMATION BELONGING TO PROCESS SYSTEMS INTERNATIONAL, INC. OR ITS AFFILIATED COMPANIES AND SHALL BE USED ONLY FOR THE PURPOSE FOR WHICH IT WAS SUPPLIED. IT SHALL NOT BE COPIED, REPRODUCED OR OTHERWISE USED, NOR SHALL SUCH INFORMATION BE FURNISHED IN WHOLE OR IN PART TO OTHERS EXCEPT IN ACCORDANCE WITH THE TERMS OF ANY AGREEMENT UNDER WHICH IT WAS SUPPLIED OR WITH THE PRIOR WRITTEN CONSENT OF PROCESS SYSTEMS INTERNATIONAL, INC. AND SHALL BE RETURNED UPON REQUEST.				TOLERANCES: FRACTIONAL & DECIMALS 1/16" - 3/32" BOND 1/32" TWO PLACE DECIMAL & 3/16" THREE PLACE DECIMAL & 3/32" FINISHED SURFACE HAS BREAK CORNERS TO REMOVE ALL BURRS			
V049-3-003	LOUISIANA OVERALL SITE PLAN	DWG. NO.	DESCRIPTION	DO NOT SCALE THIS DRAWING	0	ISSUE FOR LA DESIGN REVIEW	02-24-97
V049-3-001	GENERAL NOTES & LEGEND			USED ON	REV	DESCRIPTION	DATE
DWG. NO.	DESCRIPTION	DWG. NO.	DESCRIPTION	NEXT ASS'Y:		ISSUE DESCRIPTION	DATE