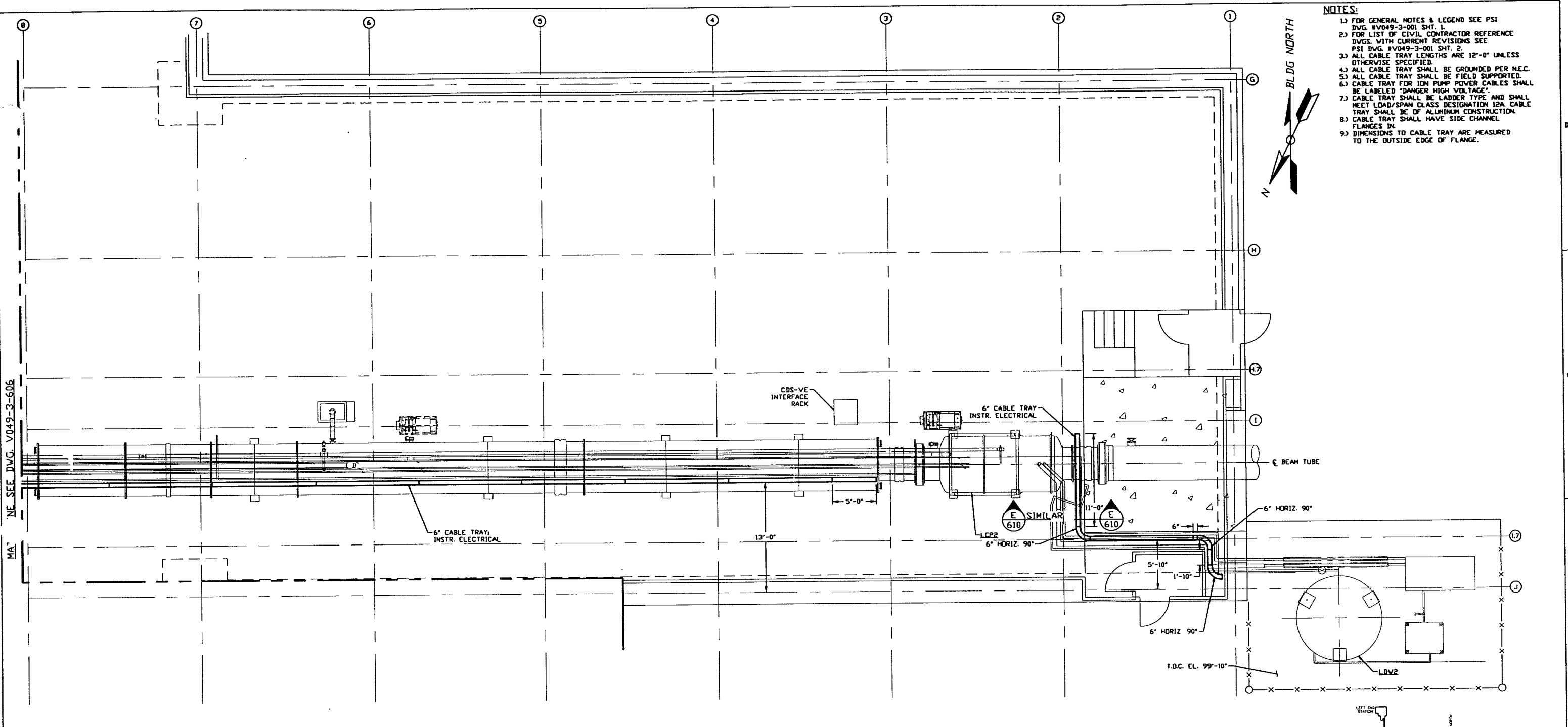


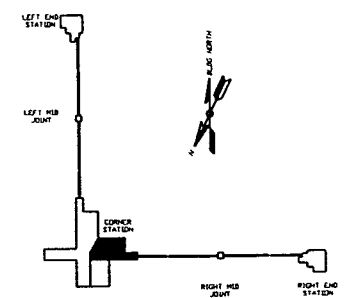
**NOTES:**

- 1) FOR GENERAL NOTES & LEGEND SEE PSI DWG. #V049-3-001 SHT. 1.
- 2) FOR LIST OF CIVIL CONTRACTOR REFERENCE DWGS. WITH CURRENT REVISIONS SEE PSI DWG. #V049-3-001 SHT. 2.
- 3) ALL CABLE TRAY LENGTHS ARE 12'-0" UNLESS OTHERWISE SPECIFIED.
- 4) ALL CABLE TRAY SHALL BE GROUNDED PER N.E.C.
- 5) ALL CABLE TRAY SHALL BE FIELD SUPPORTED.
- 6) CABLE TRAY FOR ION PUMP POWER CABLES SHALL BE LABELED "DANGER HIGH VOLTAGE".
- 7) CABLE TRAY SHALL BE LADDER TYPE AND SHALL MEET LOAD/SPAN CLASS DESIGNATION 12A. CABLE TRAY SHALL BE OF ALUMINUM CONSTRUCTION.
- 8) CABLE TRAY SHALL HAVE SIDE CHANNEL FLANGES IN.
- 9) DIMENSIONS TO CABLE TRAY ARE MEASURED TO THE OUTSIDE EDGE OF FLANGE.



RIGHT BEAM MANIFOLD PLAN @ EL. 100'-0"

PRELIMINARY NOT FOR CONSTRUCTION



LIGO-D970116-00-V

<p><b>PROPRIETARY AND CONFIDENTIAL</b></p> <p>THIS DOCUMENT CONTAINS PROPRIETARY INFORMATION BELONGING TO PROCESS SYSTEMS INTERNATIONAL, INC. OR ITS AFFILIATED COMPANIES AND SHALL BE USED ONLY FOR THE PURPOSE FOR WHICH IT WAS SUPPLIED. IT SHALL NOT BE REPRODUCED OR OTHERWISE USED, NOR SHALL SUCH INFORMATION BE FURNISHED IN WHOLE OR IN PART TO OTHERS EXCEPT IN ACCORDANCE WITH THE TERMS OF ANY AGREEMENT UNDER WHICH IT WAS SUPPLIED OR WITH THE PRIOR WRITTEN CONSENT OF PROCESS SYSTEMS INTERNATIONAL, INC. AND SHALL BE RETURNED UPON REQUEST.</p>		<p>UNLESS OTHERWISE SPECIFIED DIMENSIONS ARE IN INCHES</p> <p>TOLERANCES:</p> <p>FRACTIONAL: ± ANGULAR: ± 30' BEH 12"</p> <p>TWO PLACE DECIMAL: ± .005</p> <p>THREE PLACE DECIMAL: ± .005</p> <p>FINISHED SURFACE RIMS BREAK CORNERS IN OUT REMOVE ALL BURRS</p>		<p>DO NOT SCALE THIS DRAWING</p> <p>USED ON: _____</p> <p>REV: _____</p> <p>NEXT ASS'Y: _____</p>		<p>0 ISSUE FOR LA DESIGN REVIEW</p> <p>CHKD: <i>RKD</i> DRWN: <i>HLA</i> DATE: 02.24.97</p>		<p>PROCESS SYSTEMS INTERNATIONAL, INC.</p> <p>20 WALSH DR. WESTBOROUGH, MASSACHUSETTS 01581 USA</p>	
<p>V049-3-610 CABLE TRAY DETAILS LOUISIANA CORNER STATION</p> <p>V049-3-606 CABLE TRAY PLAN LOUISIANA VERTEX SECTION</p> <p>V049-3-003 LOUISIANA OVERALL SITE PLAN</p> <p>V049-3-001 GENERAL NOTES &amp; LEGEND</p>		<p>DESCRIPTION</p> <p>DESCRIPTION</p>		<p>DESCRIPTION</p> <p>ISSUE DESCRIPTION</p>		<p>CABLE TRAY PLAN</p> <p>LIGO VACUUM EQUIPMENT</p> <p>LOUISIANA SITE</p> <p>RIGHT BEAM MANIFOLD</p>			
<p>REFERENCE DRAWINGS</p>		<p>SCALE: 3/16" = 1' - 0"</p> <p>SHEET: 1 OF 1</p>		<p>SCALE: 3/16" = 1' - 0"</p> <p>SHEET: 1 OF 1</p>		<p>SCALE: 3/16" = 1' - 0"</p> <p>SHEET: 1 OF 1</p>			