

- NOTES:**
- 1) PROVIDE ALL TAPES IN EACH CONDUIT
 - 2) ALL UNDERGROUND INSTALLATION AND DETAILS ARE BY OTHERS
 - 3) POWER SOURCE SHALL BE AS FOLLOWS:
 - A) BACKUP/STANDBY FROM HVDC/STANBY
 - B) BUILDING CANT 480/277VAC
 - C) GATE VALVE 480/277VAC
 - D) GENERATOR CANT 480/277VAC
 - E) GENERATOR CANT 480/277VAC
 - F) TURBO CANT 480/277VAC
 - 4) FOR EQUIPMENT POWER REQUIREMENTS, REFER TO THE EQUIPMENT MANUALS
 - 5) FOR GENERAL NOTES & LEGENDS SEE P&ID SHEET SV-00-001
 - 6) FOR LIST OF CIVIL CONTRACTOR REFERENCE POINTS WITH CURRENT REVISIONS SEE P&ID SV-00-001-3-001 SHY 2

DATE	DESCRIPTION	BY	CHKD

DATE	DESCRIPTION	BY	CHKD

REV	DESCRIPTION	DATE
3	ISSUE FOR AS-BUILT	10/21/99
2	ISSUE FOR CONSTRUCTION	04/26/99
1	ISSUE FOR LA DESIGN REVIEW	02/24/97
0	ISSUE FOR INSTALLATION	12/23/96

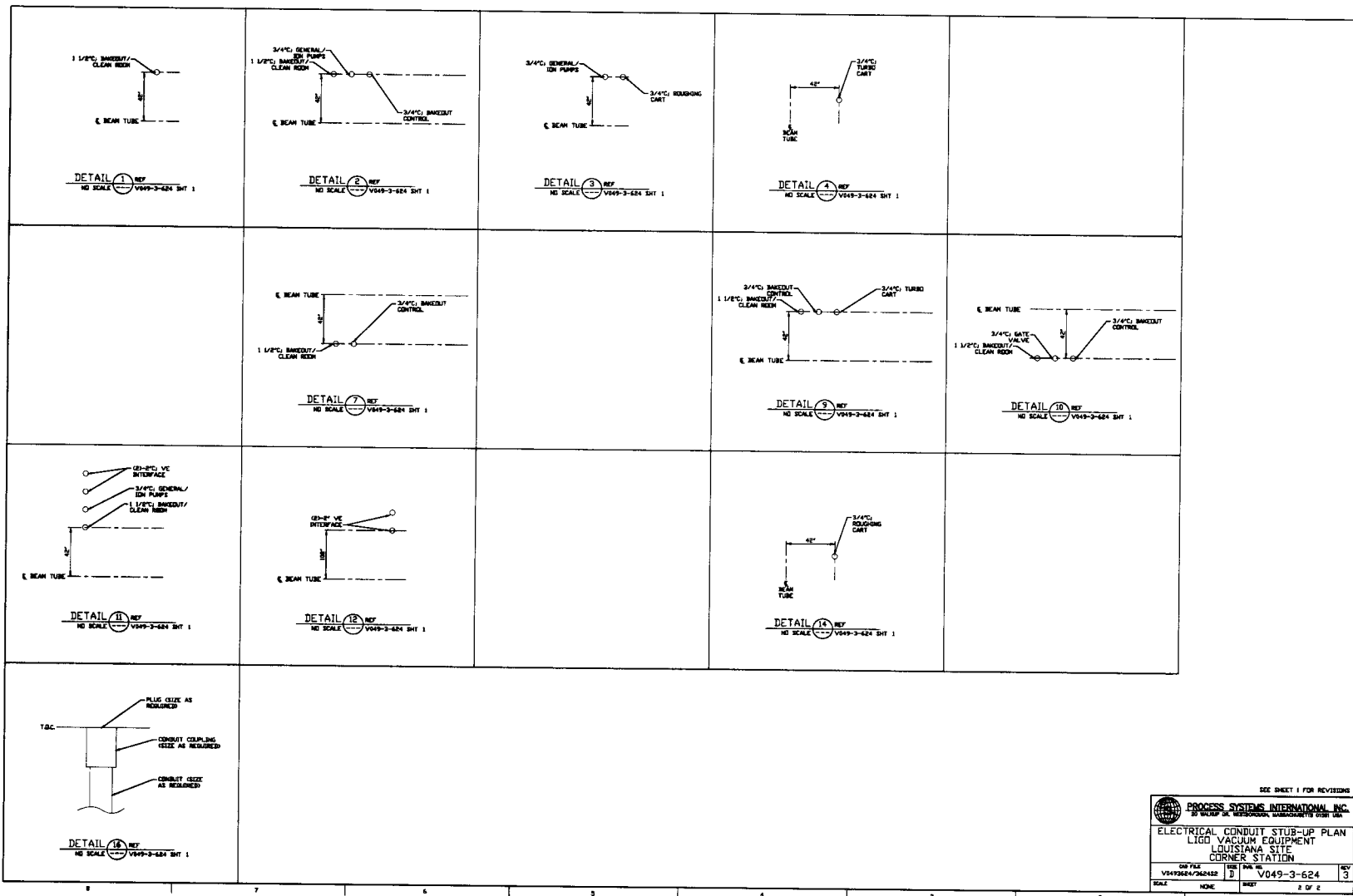
PROCESS SYSTEMS INTERNATIONAL, INC.
 20 WILSON DR. METROPARADISE, MASSACHUSETTS 02454 USA

ELECTRICAL CONDUIT STUB-UP PLAN
 LIGO VACUUM EQUIPMENT
 LOUISIANA SITE
 CORNER STATION

DATE FILED: 10/21/99
 DATE REVISED: 10/21/99
 SHEET NO: 3
 OF: 3

LIGO-D970076-03-V

INDICATION VERSION - NOT FOR COMMERCIAL USE



SEE SHEET 1 FOR REVISIONS

PROCESS SYSTEMS INTERNATIONAL INC. <small>20 BUCKLE DR. WESTBOROUGH, MASSACHUSETTS 01581 USA</small>	
ELECTRICAL CONDUIT STUB-UP PLAN LIGO VACUUM EQUIPMENT LOUISIANA SITE CORNER STATION	
<small>REV. NO.</small> V049-3-624-2	<small>REV. DATE</small> D V049-3-624
<small>SCALE</small> NONE	<small>HEET</small> 3 <small>OF 2</small>