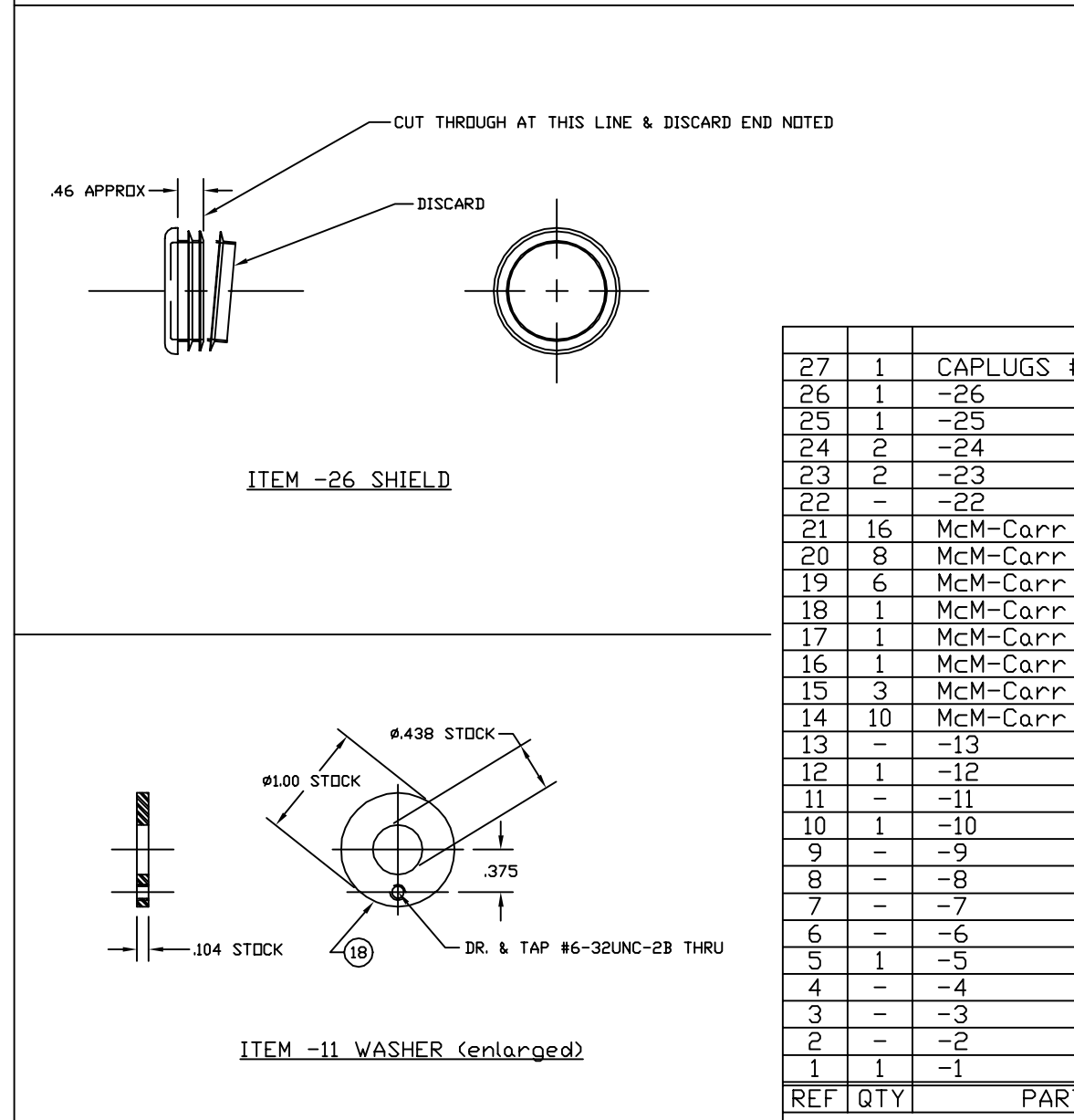
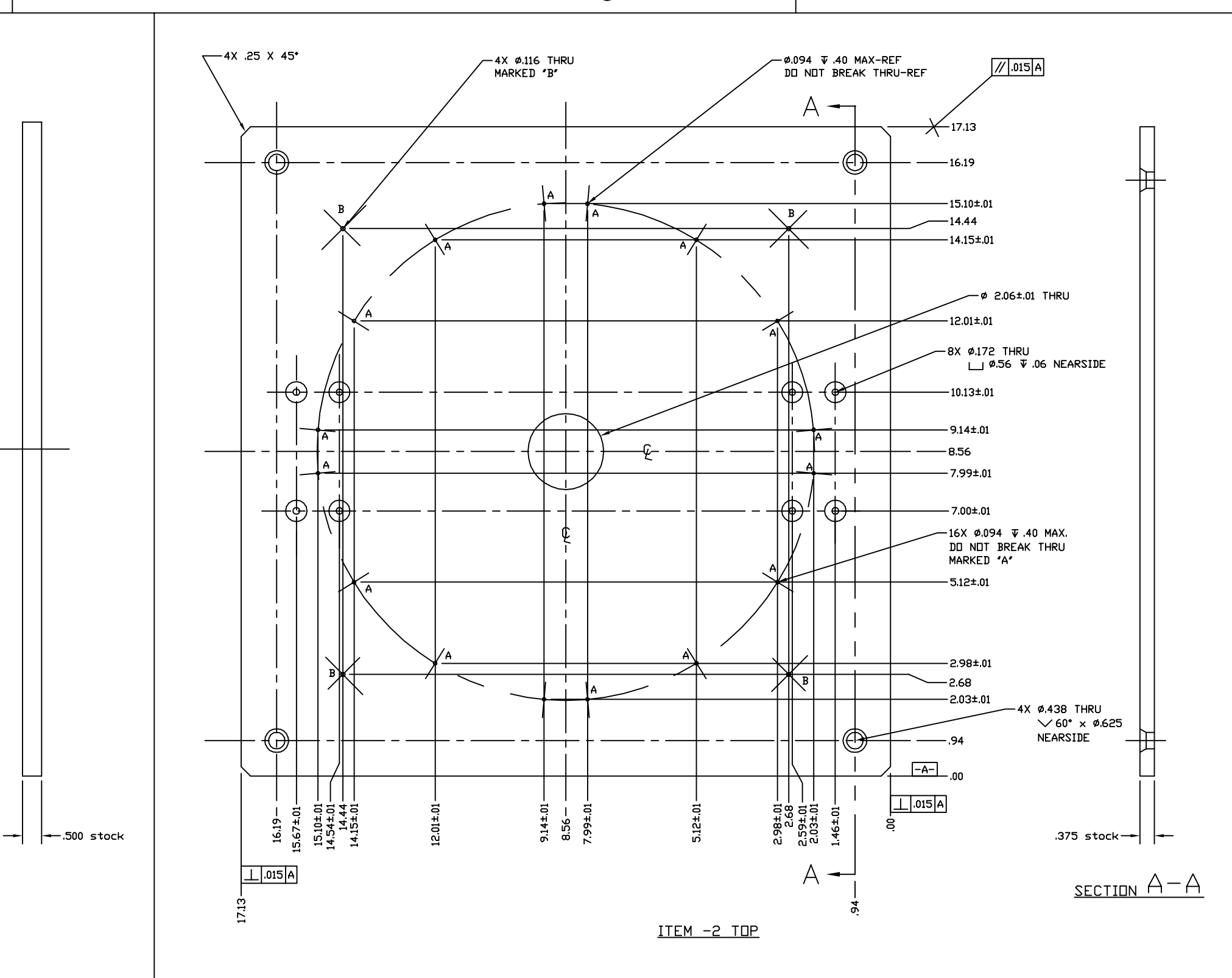
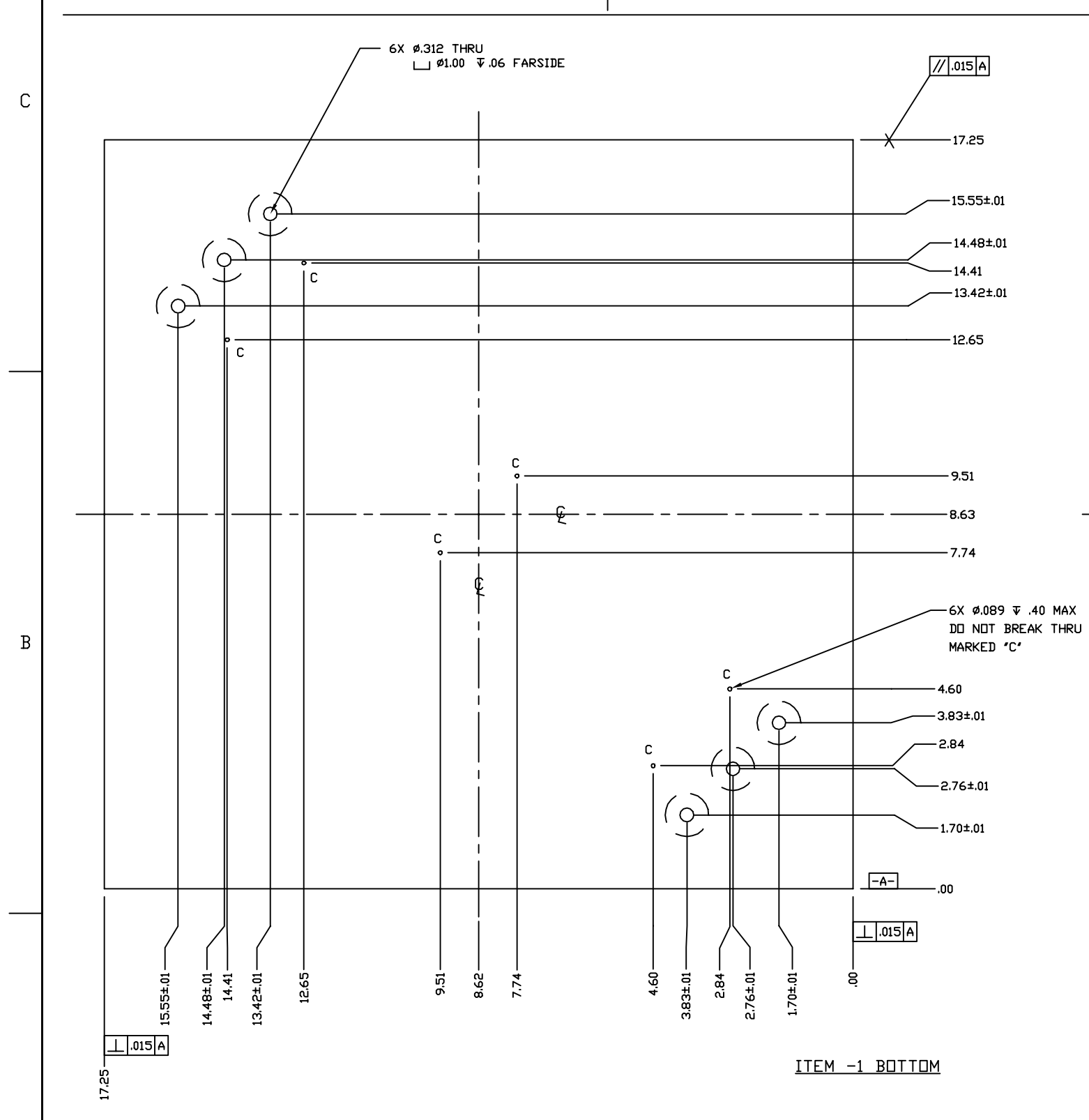
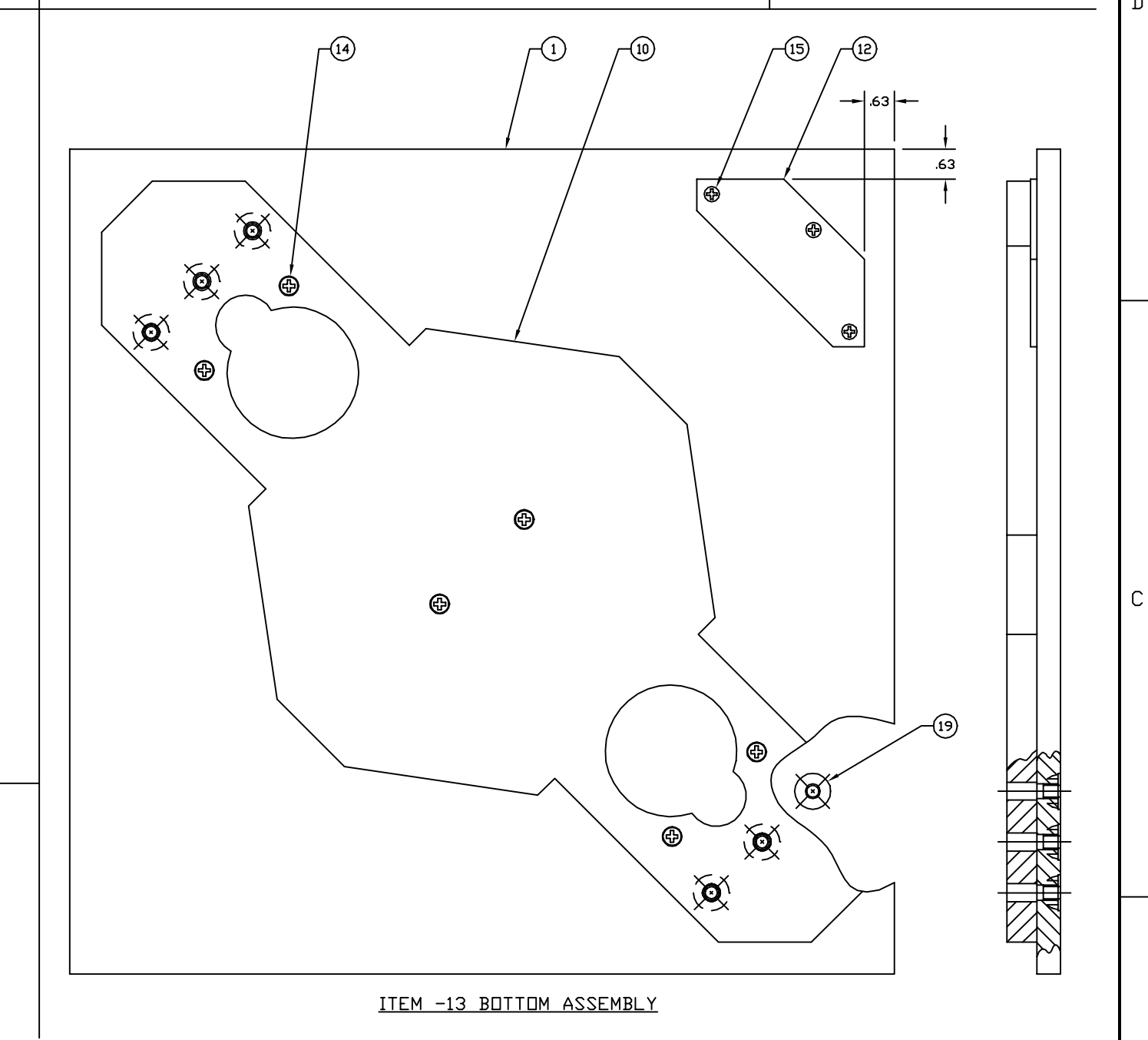
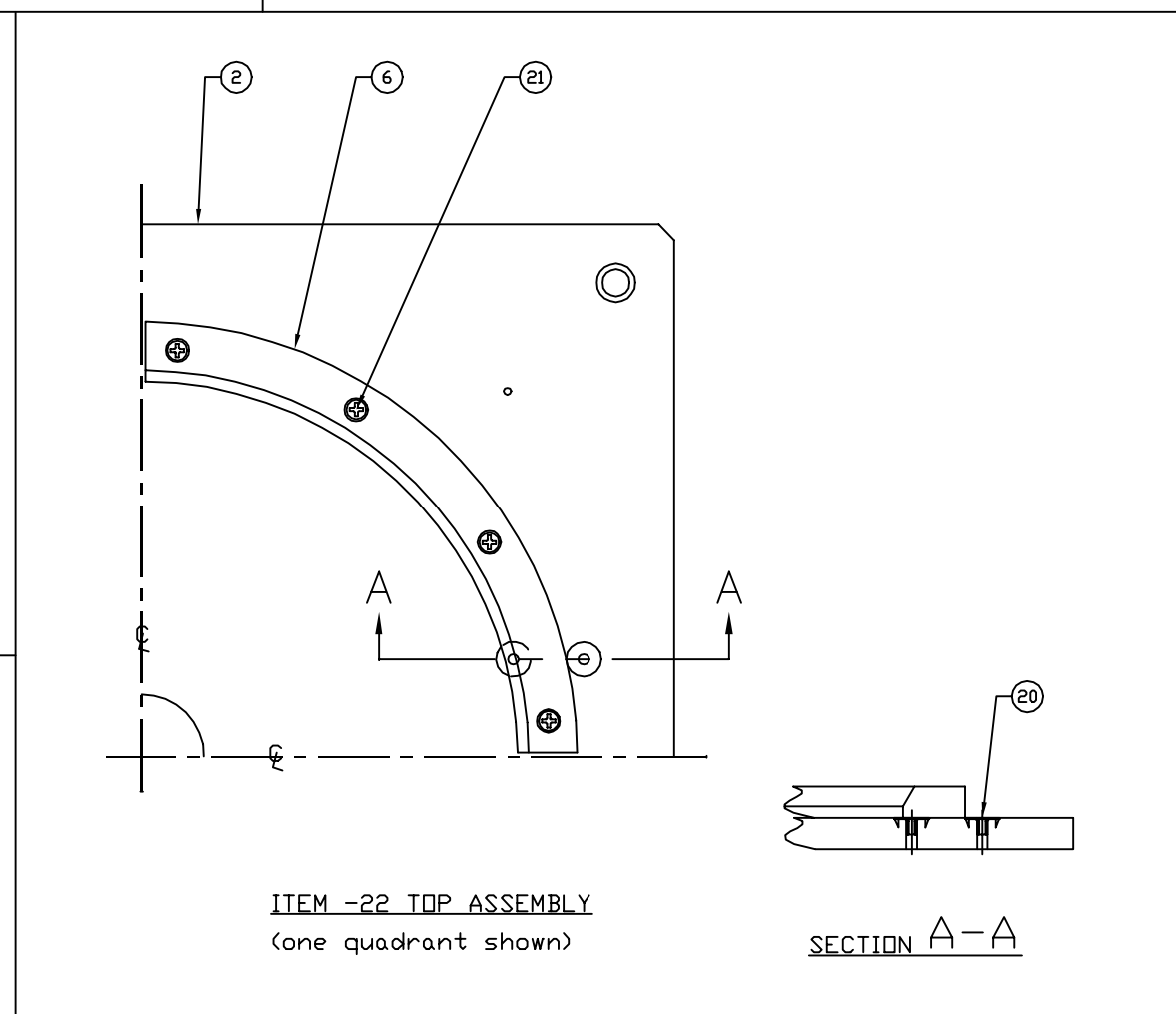
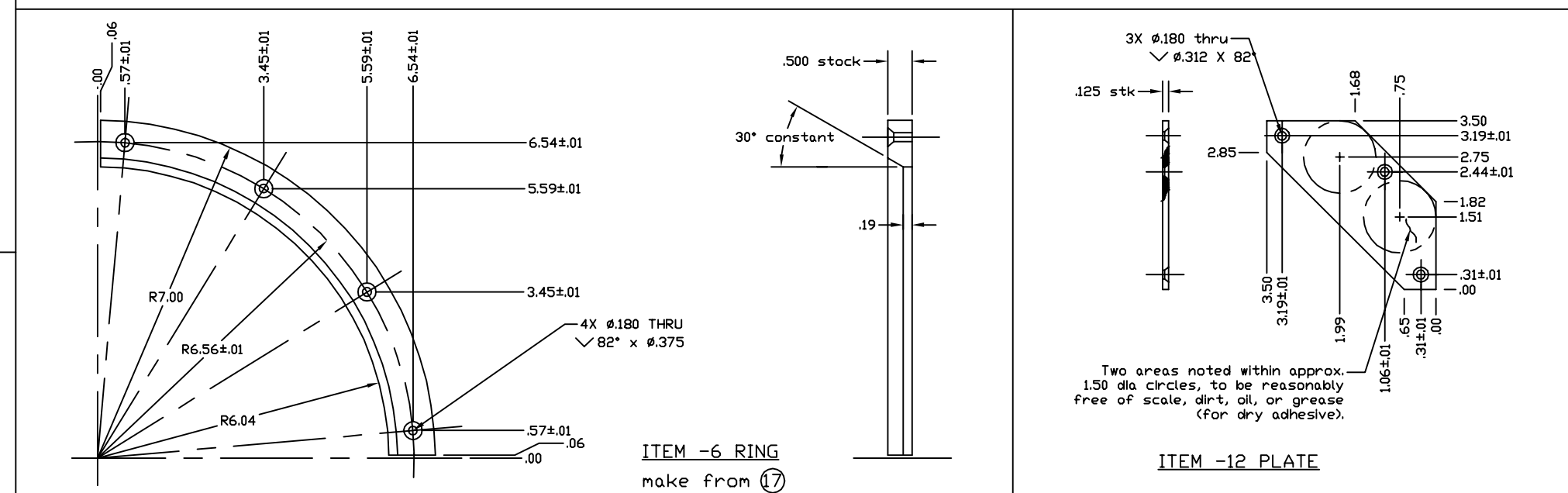
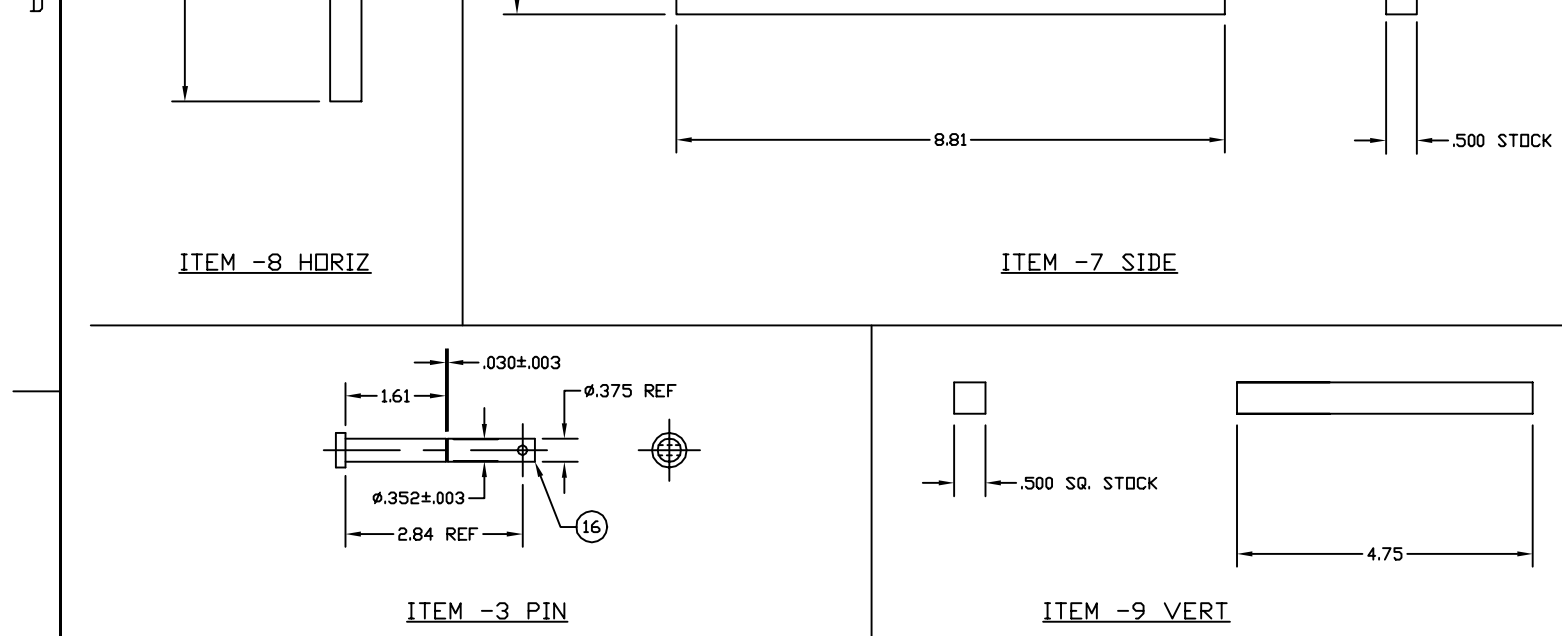


NOTES: (UNLESS OTHERWISE SPECIFIED)

- NO ADHESIVES, PAINTS, VARNISHES, OR OTHER VOLATILE COMPOUNDS ARE TO BE USED IN THE FABRICATION OR ASSEMBLY OF THESE PARTS.
- VENDOR INFORMATION:
 - McMaster-Carr, Los Angeles, CA (562) 692-5911
 - Caplugs, Los Angeles, CA (310) 671-1232
- ALL PARTS ON THIS DRAWING ARE USED ON DRAWING D970064 (SHIPPING COMPARTMENT ASSEMBLY).



REF	QTY	PART or DRWG No.	NOMENCLATURE or DESCRIPTION	MATERIAL
27	1	CAPPLUGS #CCF-2-1/4-10-14	RIB-LOK GLIDE	LDPE-STOCK BLACK
26	1	-26	SHIELD (MAKE FROM ITEM 27)	-
25	1	-25	FIXED CLAMP ASSEMBLY	-
24	2	-24	2.38 x 4.50 x .62 THICK	WOOD
23	2	-23	3.45 x 4.50 x .75 THICK	PLYWOOD
22	-	-22	TOP ASSEMBLY	-
21	16	McM-Carr #90031A198	#8 x .88 LONG PHILLIPS FL. HD. WOOD SCREW	STEEL/ZINC PLATE
20	8	McM-Carr #90975A007	#6-32 x .25 LONG TEE NUT	STEEL/ZINC PLATE
19	6	McM-Carr #90975A025	1/4-20 x .312 LONG TEE NUT	STEEL/ZINC PLATE
18	1	McM-Carr #98010A200	.438 I.D. x 1.00 O.D. x .10 THICK FLAT WASHER	STAINLESS STEEL
17	1	McM-Carr #8657K116	.50 x 12 x .12 SHEET	LOW DEN. POLY (LDPE)
16	1	McM-Carr #92390A285	2.375 x 2.84 GRIP LENGTH CLEVIS PIN	STAINLESS STEEL (300)
15	3	McM-Carr #90031A194	#8 x .50 LONG PHILLIPS FL. HD. WOOD SCREW	STEEL/ZINC PLATE
14	10	McM-Carr #90031A247	#10 x 1.00 LONG PHILLIPS FL. HD. WOOD SCREW	STEEL/ZINC PLATE
13	-	-13	BOTTOM ASSEMBLY	-
12	1	-12	.125 x 1.75 WIDE STRIP (PLATE)	6061-T6 ALUM
11	-	-11	WASHER (MAKE FROM ITEM 18)	-
10	1	-10	SUPPORT	PLYWOOD .625 THK
9	-	-9	.50 SQ. X 4.63 LONG (VERT)	WOOD
8	-	-8	.50 SQ. X 16.25 LONG (HORIZ)	WOOD
7	-	-7	SIDE	PLYWOOD .500 THK
6	-	-6	RING (MAKE FROM ITEM 17, MAKE'S 5)	-
5	1	-5	CLAMP ASSEMBLY	-
4	-	-4	GUSSET	WOOD
3	-	-3	PIN (MAKE FROM ITEM 16)	-
2	-	-2	TOP	PLYWOOD .375 THK
1	1	-1	BOTTOM	PLYWOOD .500 THK

DWG. NO.	DESCRIPTION	MATERIAL:	HEAT TREAT:	FINISH:	REV	DESCRIPTION	DCC	SYS	DET	CDS	VE	CC	BT	CHECK	DRWN	DATE	CAD FILE	SIZE DWG. NO.
	REFERENCE DRAWINGS																D970064-B.dwg	D
																		D970065-B-D
																		1 OF 1