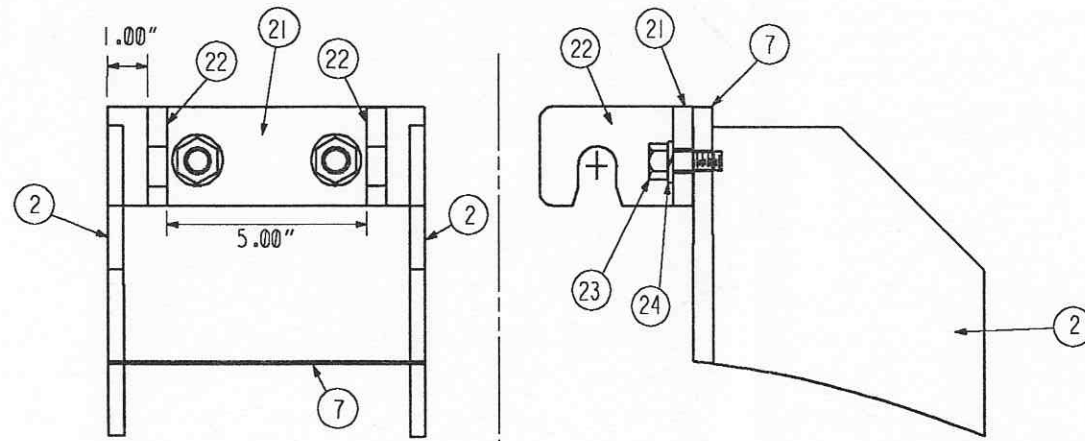


ASSEMBLY "A"
MAKE 2 PCS.



ASSEMBLY "B"
MAKE 2 PCS.

INDICATES CHANGE FROM PREVIOUS ISSUE

REMOVED BOTTOM NOTES IN TITLE BLOCK		Supplier's/Purchaser's No.	
		LIGO-BEAM TUBE HANFORD, WA & LIVINGSTON, LA CIRCUMFERENTIAL LEAK TEST BOX GENERAL VIEW	
		Customer's No.	Contract No.
		By CLD Chkd DWD Date 2-26-96	953571
		M. L. TELLALIAN Engineering Supervisor	Dwg. ER600 Rev. 1 Sheet
		LIGO-D970053-01-B	