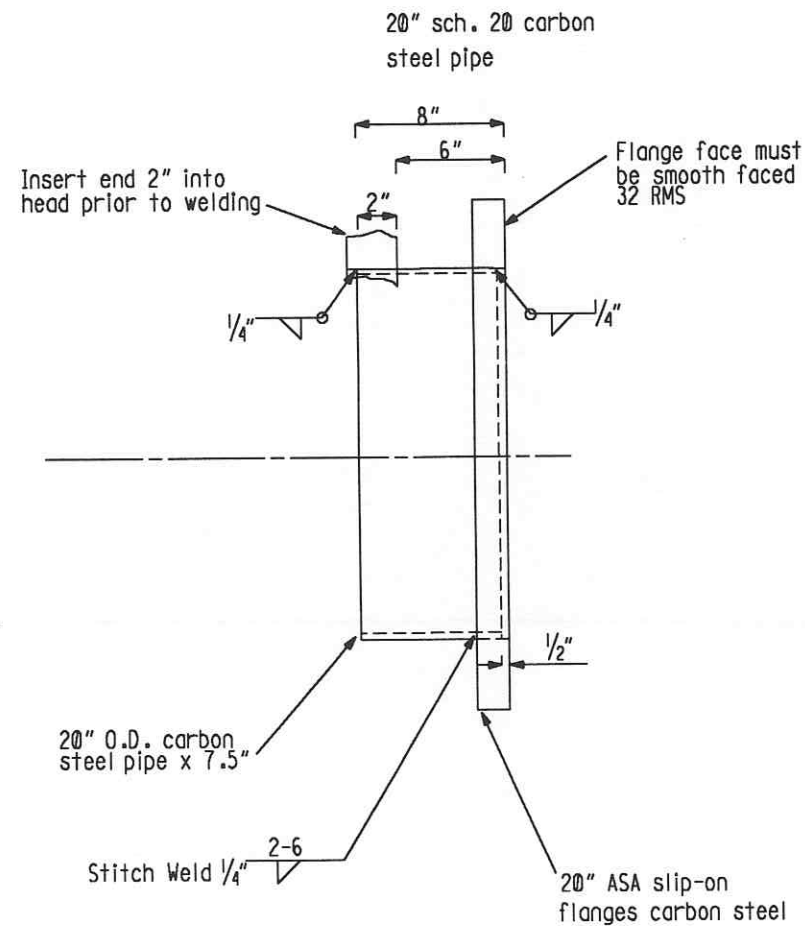
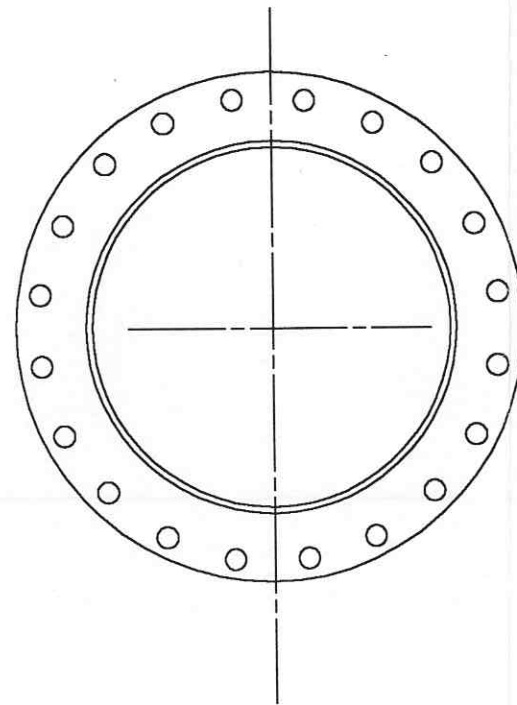


Weight: 1 flange • 155 # ea. plus 7.5" of 20" sch.20 pipe • 6.4 #/in. = 203 #

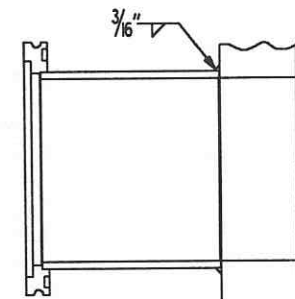


Bolt holes to straddle vertical centerline when welded into head



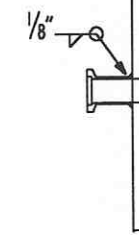
Three (3) complete half nipples req'd.

Pump End Head
Pumping Port
160 ISO stainless steel (3 pcs. req'd.)



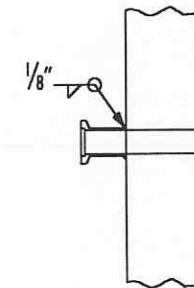
Pump End Head

25 KF long butt weld flange (3 pcs. req'd.)



Pump End Head

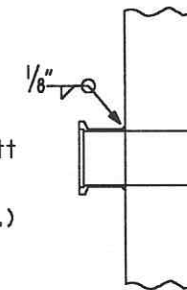
16 KF long butt weld flange (3 pcs. req'd.)



Pump End Head

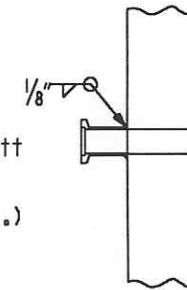
All fittings are stainless steel

50 KF long butt weld flange (3 pcs. req'd.)



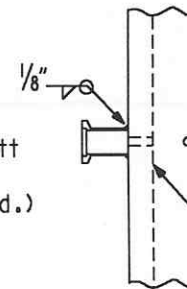
Blind End Head

25 KF long butt weld flange (3 pcs. req'd.)



Blind End Head

16 KF long butt weld flange (12 pcs. req'd.)



Pump and Blind End Heads 1/4" dia. purge port (typ. at 90° and 270° azimuths)

Supplier's/Purchaser's No.	
CBI	
LIGO-BEAM TUBE	
HANFORD, WA & LIVINGSTON, LA	
TUBE SECTION LEAK TEST HEAD NOZZLES	
Customer's No.	Contract No.
By CLD Chkd <i>[Signature]</i> Date 2-26-76	953571
M. L. TELLALIAN Engineering Supervisor	Dwg. ER219 Rev. 0 Sheet
L190-D970030-00-B	

INDICATES CHANGE FROM PREVIOUS ISSUE