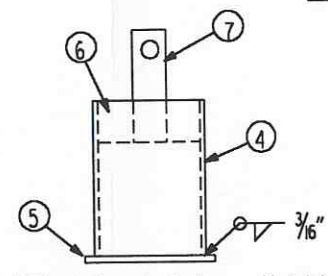
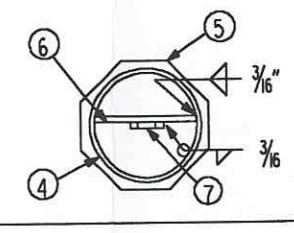
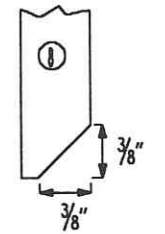
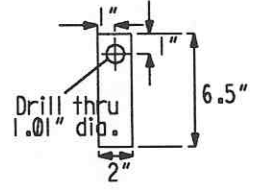
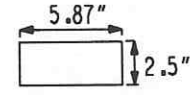
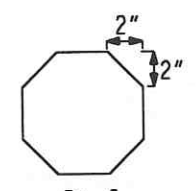
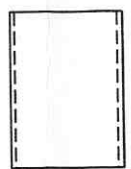
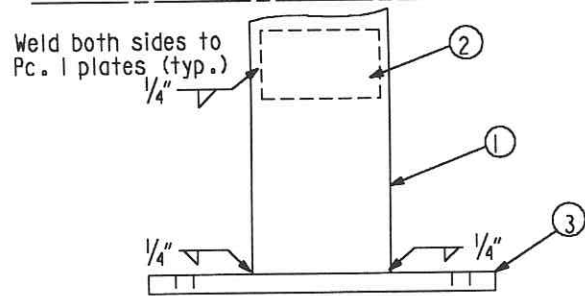
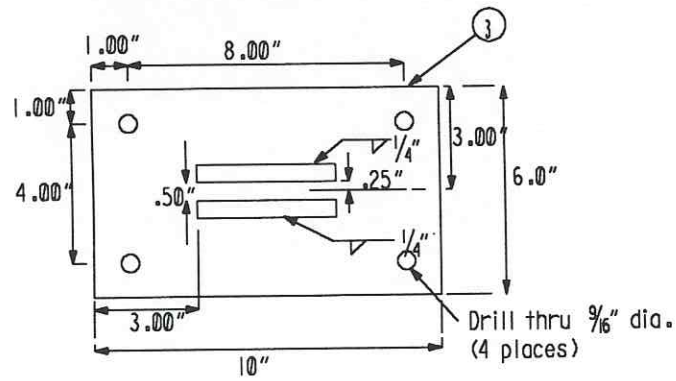
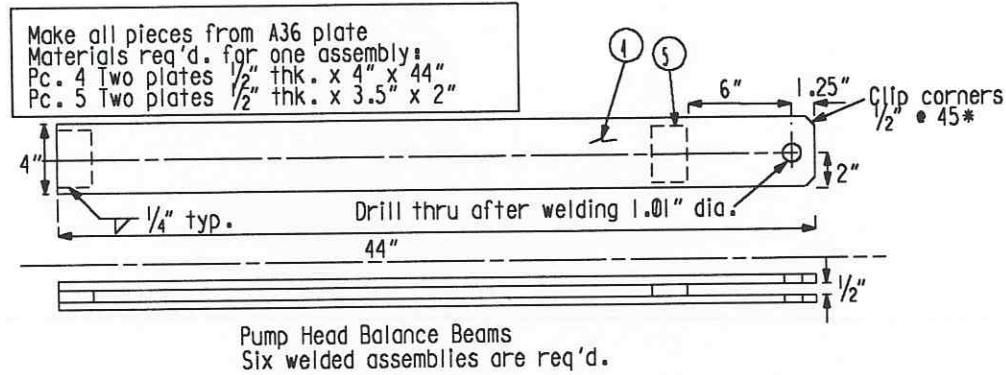
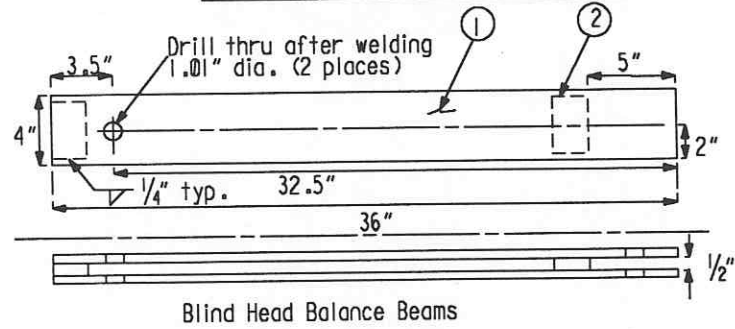
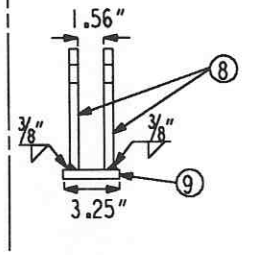
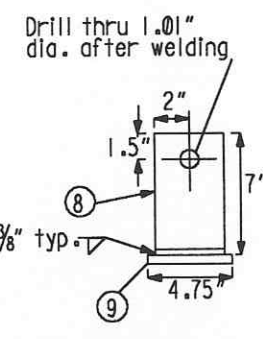


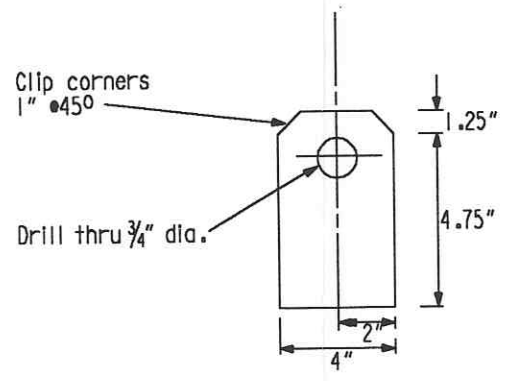
Make all pieces from A36 plate  
 Materials req'd. for one assembly:  
 Pc. 1 Two plates 1/2" thk. x 4" x 36"  
 Pc. 2 Two plates 1/2" thk. x 3.5" x 2"  
 Pc. 3 One plate 1/2" thk. x 6" x 10"



Clamp a 1.56" plate between  
 the Pc. 8 plates prior to weld-  
 ing onto the Pc. 9 plate to  
 prevent distortion of the gap



Balance Arm Cradles for Blind and Pump End Heads  
 (12 assemblies req'd.)



Supplier's/Purchaser's No.	
<b>CBI</b>	
<b>LIGO-BEAM TUBE</b>	
HANFORD, WA & LIVINGSTON, LA	
TUBE SECTION LEAK TEST	
FRAME BALANCE BEAMS AND MISC.	
Customer's No.	Contract No.
By CLD Chkd <i>[Signature]</i> Date 2-26-90	953571
M. L. TELLALIAN Engineering Supervisor	Dwg. ER217 Rev. 0 Sheet
<b>LIGO-D970028-00-B</b>	

INDICATES CHANGE FROM PREVIOUS ISSUE