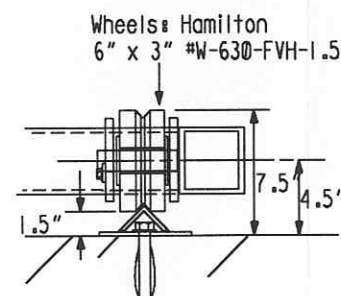
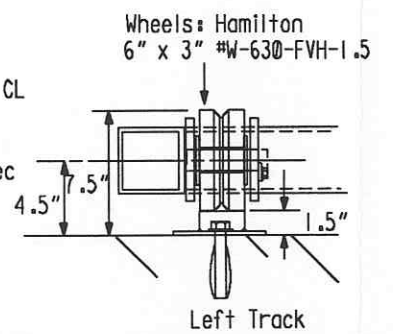
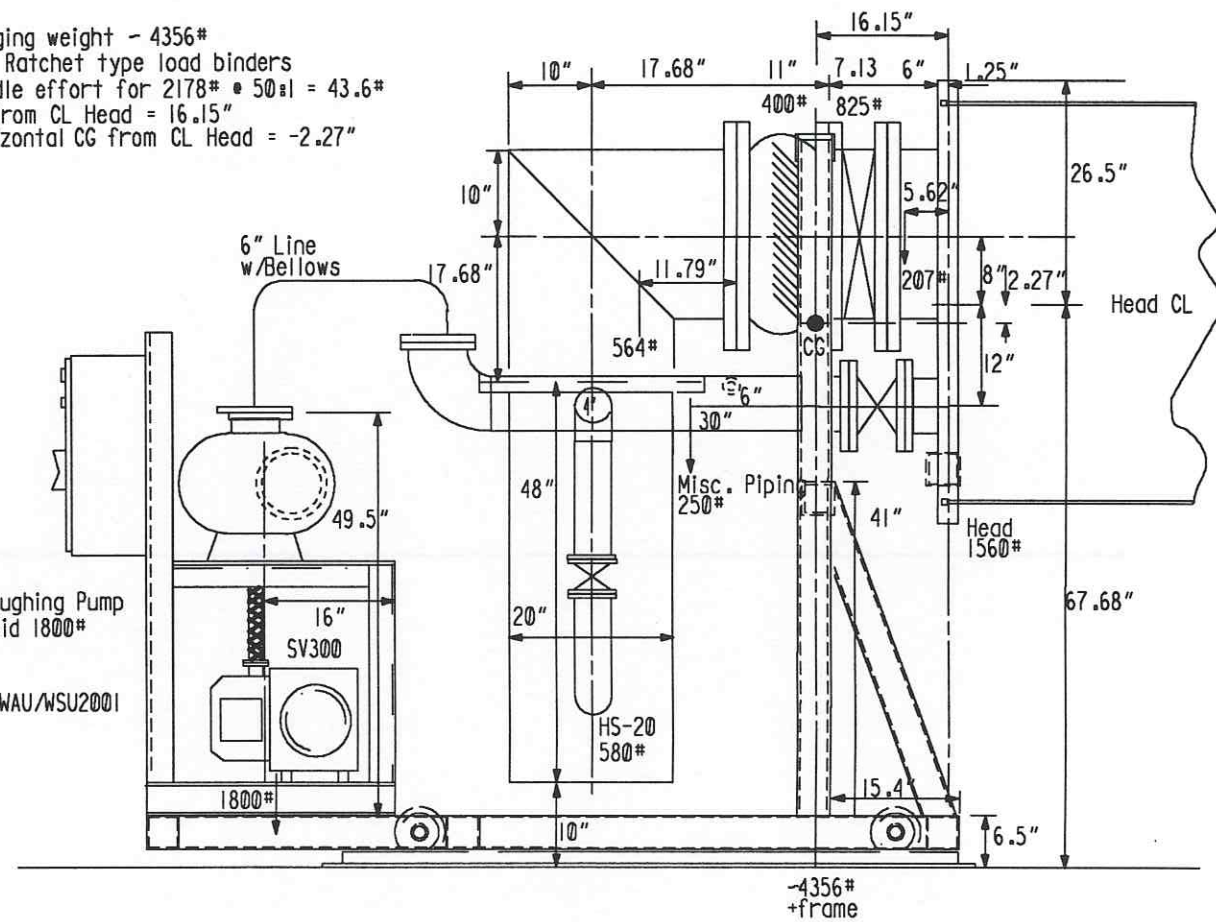


Rear View  
(Pump End)



Right Track Angle  
(2.5" x 2.5" x 3/8")

Hanging weight - 4356#  
Two Ratchet type load binders  
Handle effort for 2178# @ 50:1 = 43.6#  
CG from CL Head = 16.15"  
Horizontal CG from CL Head = -2.27"



Side View  
(Pump End)

INDICATES CHANGE FROM PREVIOUS ISSUE

Supplier's/Purchaser's No.		Contract No.	
CBI		953571	
LIGO-BEAM TUBE HANFORD, WA & LIVINGSTON, LA			
TUBE SECTION LEAK TEST PUMP END FRAME & EQUIPMENT			
Customer's No.		Contract No.	
By CLD Chkd DWD Date 2-26-96		953571	
M. L. TELLALIAN Engineering Supervisor		Dwg. ER211 Rev. 1 Sheet	
LIGO-D97002Z-01-B			

By	Chkd	Date	By	Chkd	Date