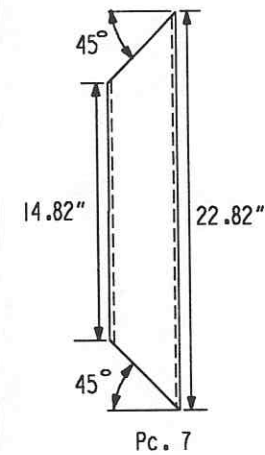
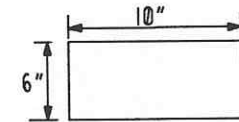


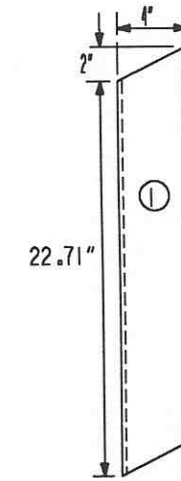
Pad plates centerlines are to be welded to the 7" x 5" rectangular tubes 142.25" from the ends of the casket



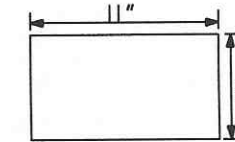
Make from A36 4" x 4" x 1/4" rect. tubing (12 pcs. req'd.)



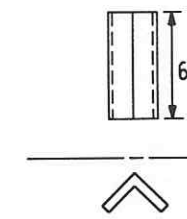
Make from 1/2" thk. A36 plate (12 pcs. req'd.)



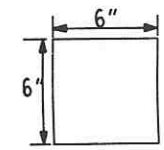
Make from A36 4" x 4" x 1/4" rect. tubing (24 pcs. req'd.)



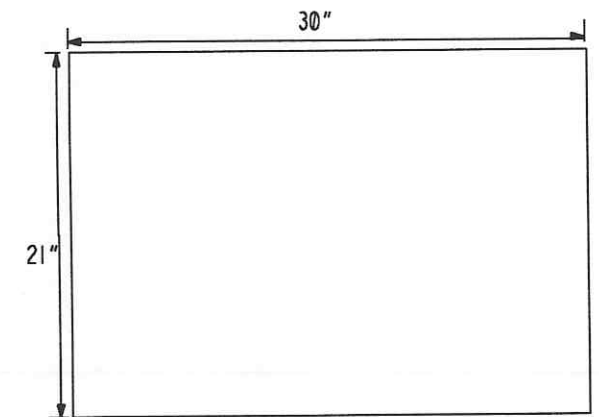
Make from 1/2" thk. A36 plate (12 pcs. req'd.)



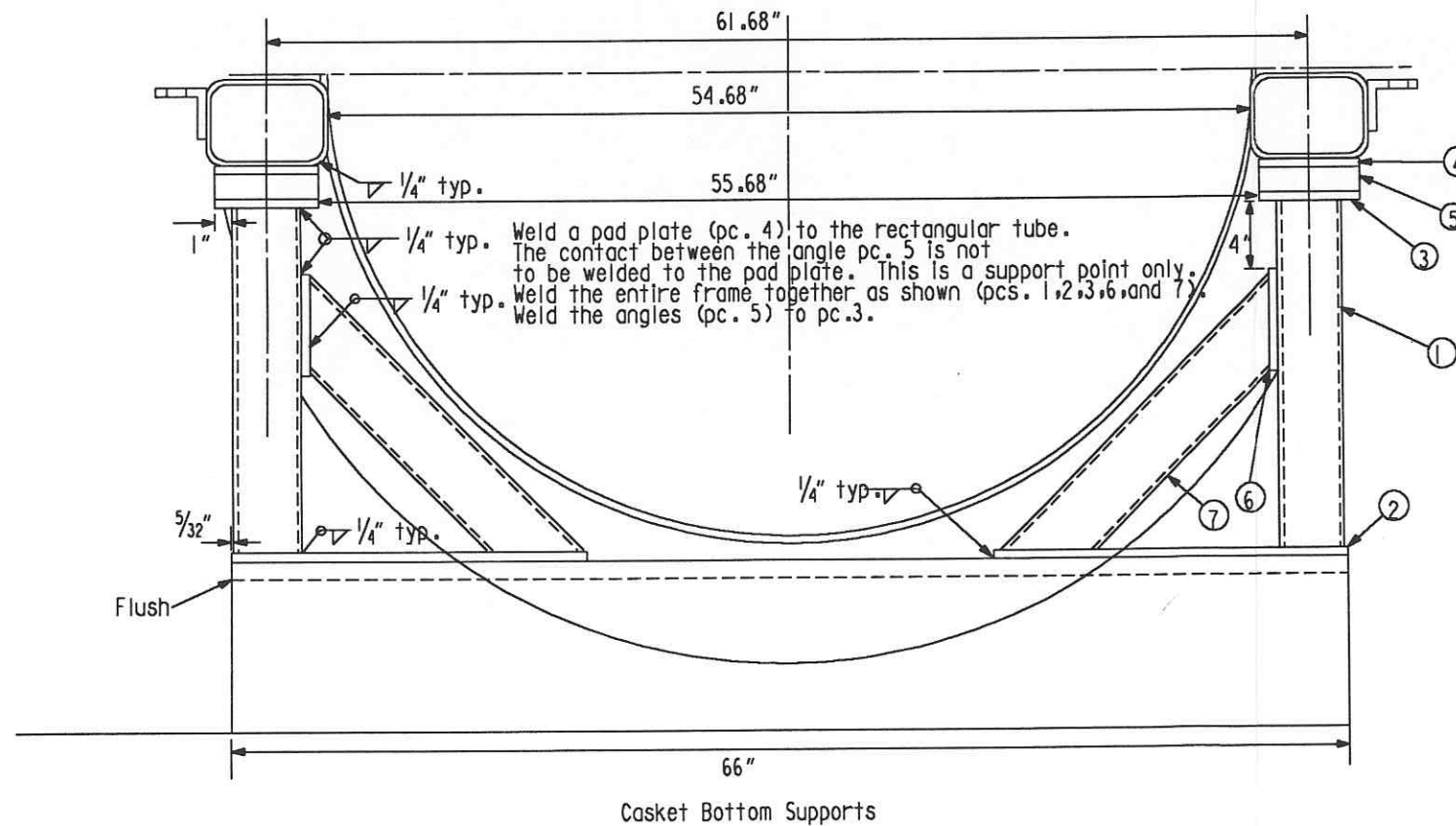
Make from 2" x 2" x 3/8" A36 angle (12 pcs. req'd.)



Make from 1/2" thk. A36 plate (12 pcs. req'd.)



Make from 3/8" thk. A36 plate (12 pcs. req'd.)



Weld a pad plate (pc. 4) to the rectangular tube. The contact between the angle pc. 5 is not to be welded to the pad plate. This is a support point only. Weld the entire frame together as shown (pcs. 1, 2, 3, 6, and 7). Weld the angles (pc. 5) to pc. 3.

INDICATES CHANGE FROM PREVIOUS ISSUE

|  |  |                            |  |
|--|--|----------------------------|--|
| Supplier's/Purchaser's No.                     |  | CBI                        |  |
| LIGO-BEAM TUBE<br>HANFORD, WA & LIVINGSTON, LA |  |                            |  |
| TUBE SECTION LEAK TEST<br>CASKET SUPPORTS      |  |                            |  |
| Customer's No.                                 |  | Contract No.               |  |
| By CLD Chkd DWD Date 2-27-96                   |  | 953571                     |  |
| M. L. TELLALIAN<br>Engineering Supervisor      |  | Dwg. ER206 Rev. 1<br>Sheet |  |
| LIGO-D970017-01-B                              |  |                            |  |