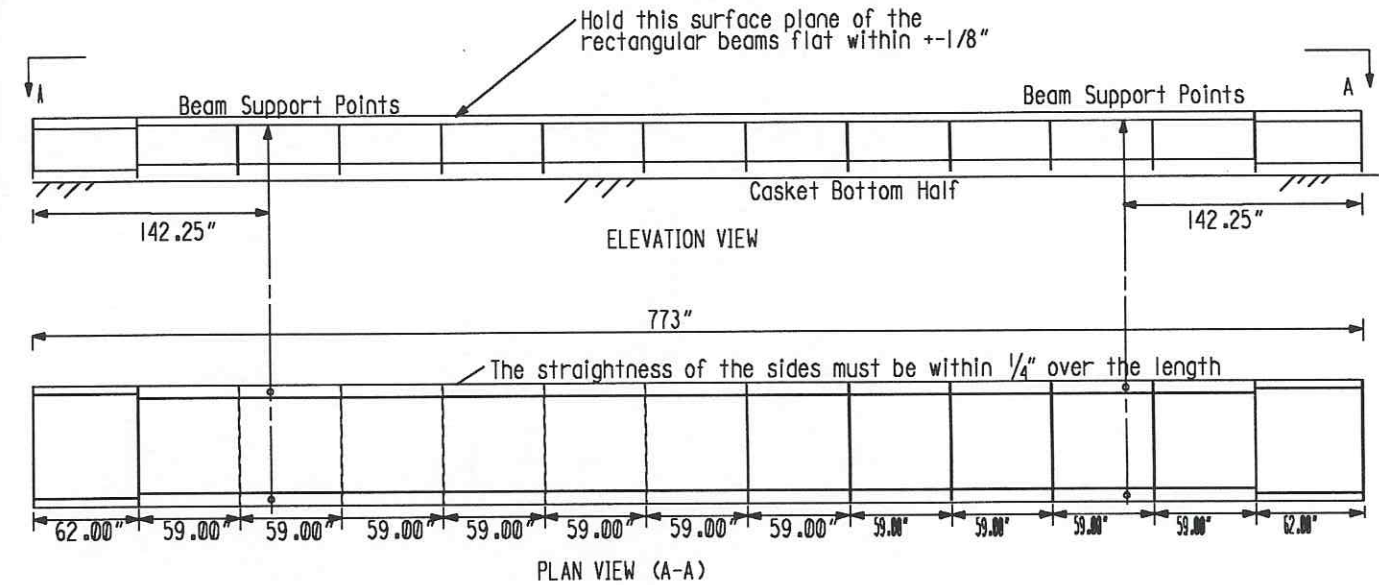
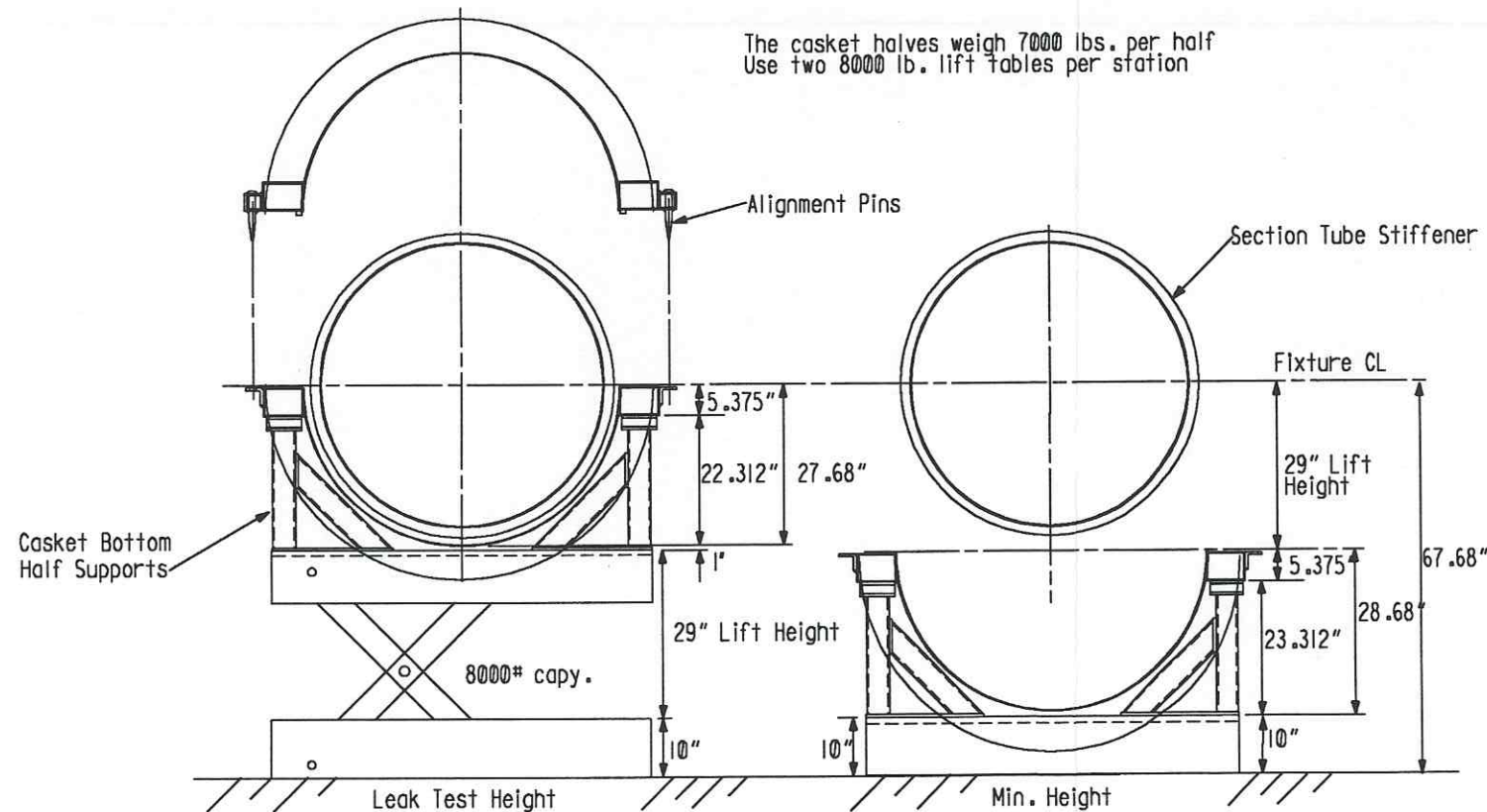


Assume that the end plate of the casket clears the tube by $\frac{1}{8}$ " when the casket is in place. What is the difference in elevation of points A and B to close that gap to zero at point C?
 $\Delta h = .125(488.5/142.25) = .43"$



When supported as shown above, the flatness of the surface shown must not vary (over the entire surface) by more than $1/4"$. Each of the three bottom casket halves will require welding in one 3" NPT pipe coupling and one $1/2"$ NPT pipe coupling. The one top casket half will require welding in one 2" NPT pipe coupling and one $1/2"$ NPT pipe coupling.



INDICATES CHANGE FROM PREVIOUS ISSUE

Supplier's/Purchaser's No.	
CBI	
LIGO-BEAM TUBE	
HANFORD, WA & LIVINGSTON, LA	
TUBE SECTION LEAK TEST CASKET SUPPORTS	
Customer's No.	Contract No.
By CLD Chkd DWD Date 2-27-96	953571
M. L. TELLALIAN Engineering Supervisor	Dwg. ER205 Rev. 1 Sheet
LIGO-D970016-01-B	