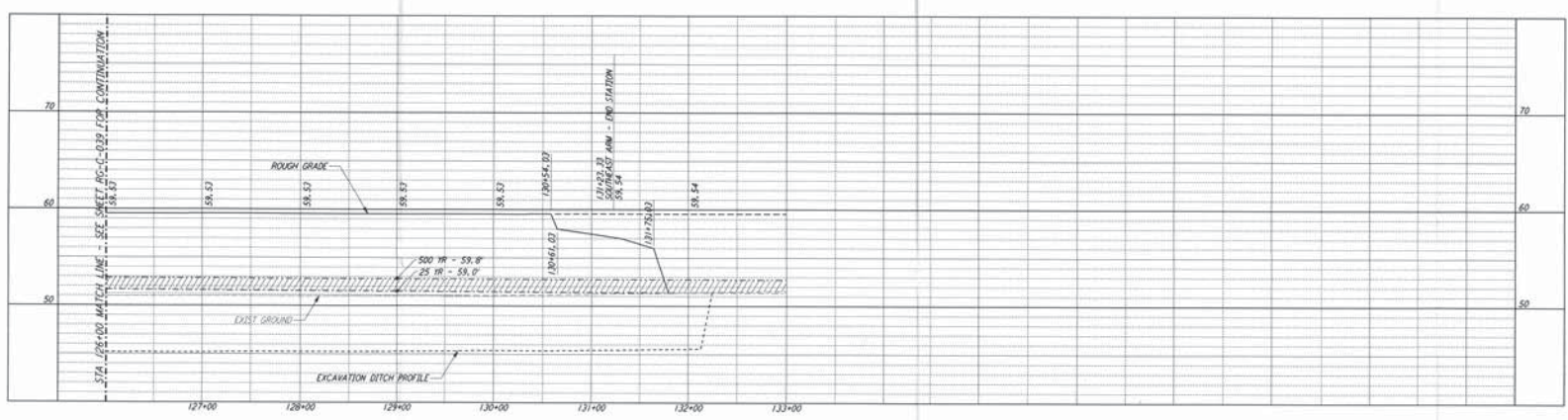
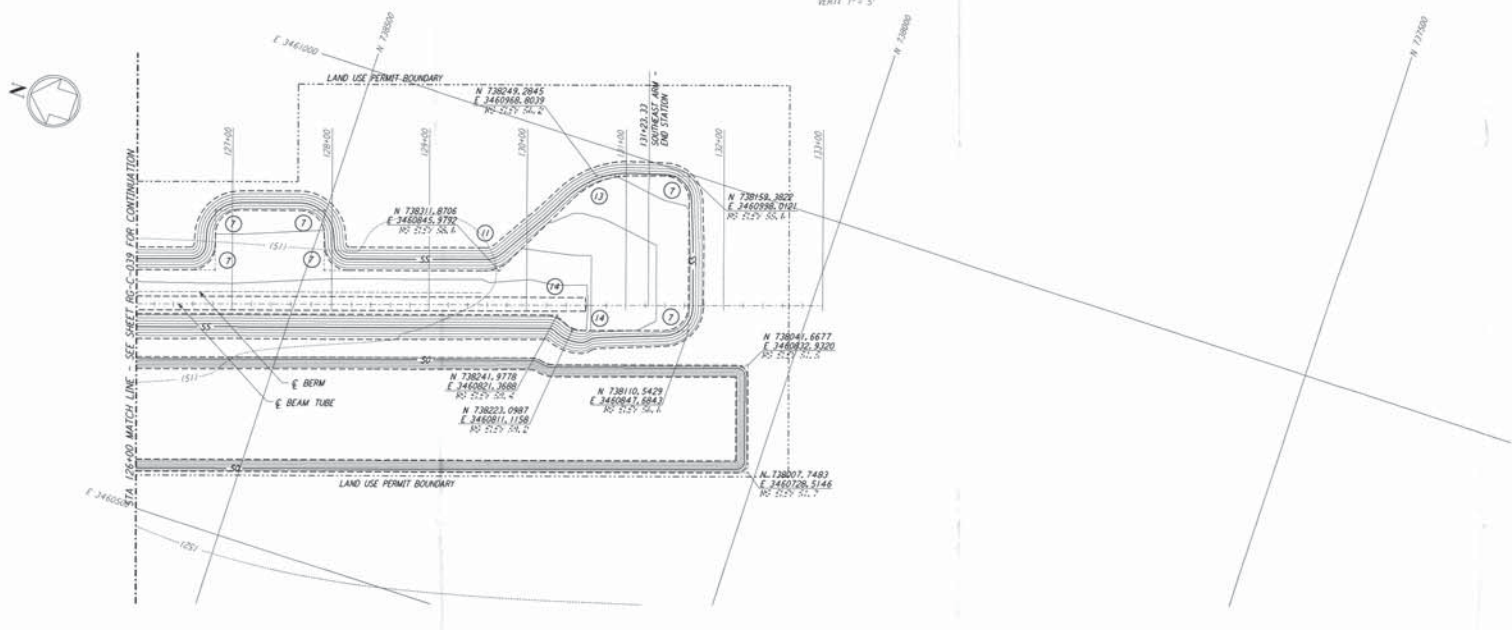


NOTES:
1. SEE SHEET RG-C-002 FOR GENERAL NOTES, LEGEND AND ABBREVIATIONS.

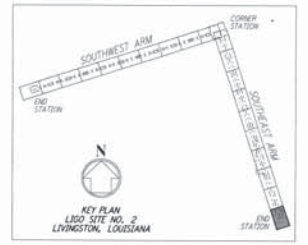


CURVE DATA				
Δ	RADIUS	LENGTH	TANGENT	
7	90°00'00"	25.00'	38.27'	25.00'
11	45°00'00"	38.00'	30.63'	16.18'
13	45°00'00"	88.00'	63.62'	33.55'
14	46°23'52"	25.00'	20.24'	10.17'

PROFILE
SCALE: HORIZ. 1" = 50'
VERT. 1" = 5'



PLAN
SCALE: 1" = 50'



LIGO-0761745-A-0

NO.	DATE	APRD BY	DESCRIPTION OF REVISION	NO.	DATE	APRD BY	ISSUED FOR
9				9	08/11/95	JUR	FINAL DESIGN REVIEW
8				8			
7				7			
6				6			
5				5			
4				4			
3				3			
2				2			
1				1			

DATE	BY	CHKD	APPD
08/11/95	JUR	MCP	THP

PARSONS
100 WEST WALNUT STREET
PASADENA, CALIFORNIA

LIGO
CALIFORNIA INSTITUTE OF TECHNOLOGY
MASSACHUSETTS INSTITUTE OF TECHNOLOGY

LASER INTERFEROMETER
GRAVITATIONAL-WAVE OBSERVATORY
ROUGH GRADING - LIVINGSTON, LA

AS NOTED PPI50969 8094
SHEET NUMBER PROJECT NUMBER

ROUGH GRADING
SOUTHEAST ARM
PLAN AND PROFILE
STA 126+00 TO STA 133+00

RG-C-040

This document and the design it covers are the property of Parsons. They are loaned only with the borrower's expressed written agreement that they will not be reproduced, copied, loaned, exhibited, or used in any other way, except by written consent from PARSONS to the borrower.

Mon, Aug 14 09:33:21 1995 a3-25892 J:\PLOTS\QUOTES\VB88\ACEE40.PRF