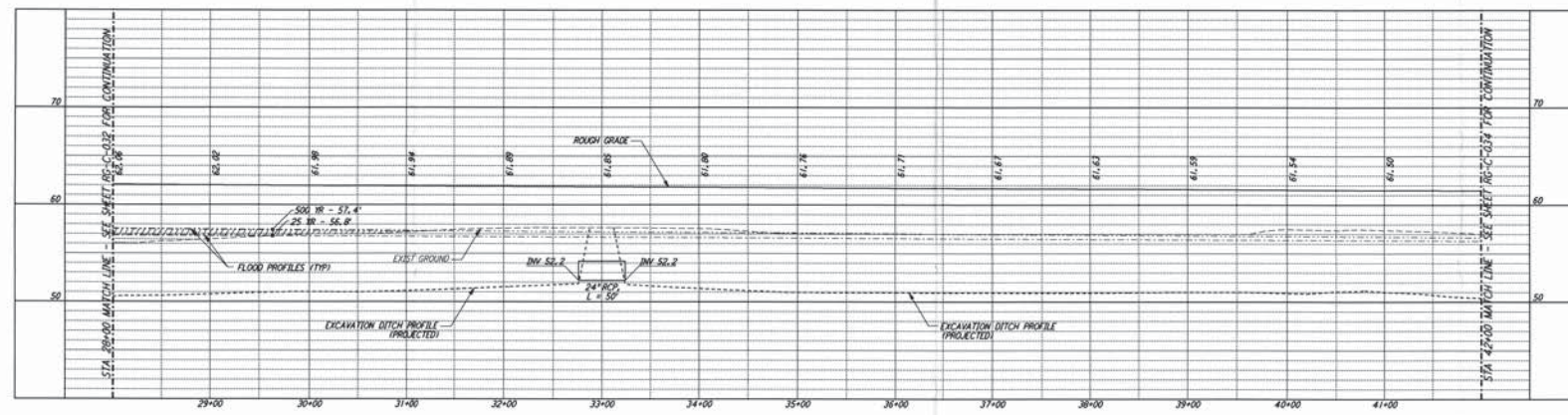
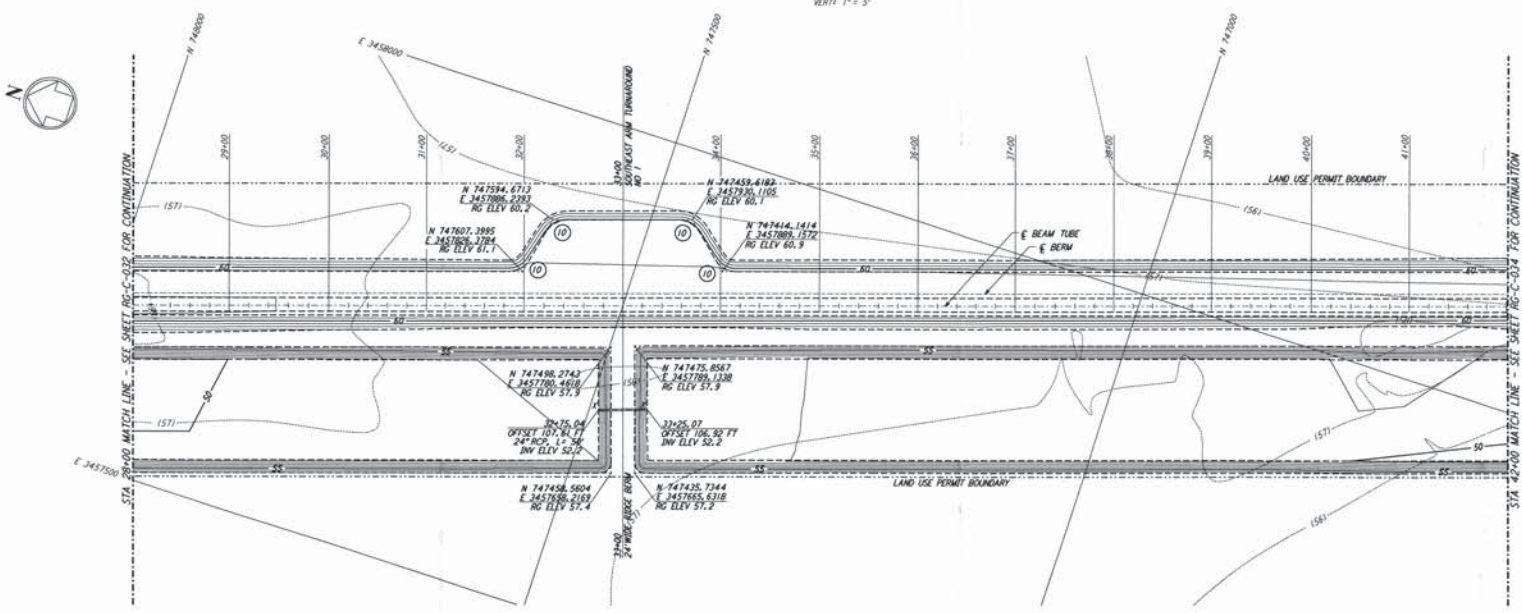


NOTES:  
 1. SEE SHEET RG-C-002 FOR GENERAL NOTES, LEGEND AND ABBREVIATIONS.

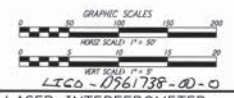
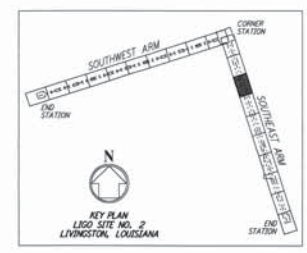


CURVE DATA			
Δ	RADIUS	LENGTH	TANGENT
10	60°00'00"	25.00'	26.18'
			14.43'

PROFILE  
 SCALES: HORIZ: 1" = 50'  
 VERT: 1" = 5'



PLAN  
 SCALE: 1" = 50'



NO.	DATE	APRD BY	DESCRIPTION OF REVISION
9			
8			
7			
6			
5			
4			
3			
2			
1	8/28/95	TEPK	ISSUED FOR BID

DATE	BY
8/11/95	WRP
8/9/95	WRP
8/8/95	WRP
8/28/95	WRP
8/28/95	WRP

**PARSONS**  
 100 WEST WALNUT STREET  
 PASADENA, CALIFORNIA

**LIGO**  
 CALIFORNIA INSTITUTE OF TECHNOLOGY  
 MASSACHUSETTS INSTITUTE OF TECHNOLOGY

LASER INTERFEROMETER  
 GRAVITATIONAL-WAVE OBSERVATORY  
 ROUGH GRADING - LIVINGSTON, LA

TITLE: ROUGH GRADING SOUTHEAST ARM PLAN AND PROFILE  
 AS NOTED PPI50969 8094  
 STA 28+00 TO STA 42+00  
**RG-C-033**

This document and the design it covers are the property of PARSONS and may not be reproduced, copied, loaned, exhibited, or used in any way without the written consent of PARSONS to the borrower.

Job No. 12 0729613 1995 83-2862 J:\PLOTS\QUEUES\5882\CE\833.PRF

Job No. 12 0729613 1995 83-2862 J:\PLOTS\QUEUES\5882\CE\833.PRF