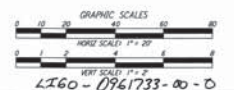
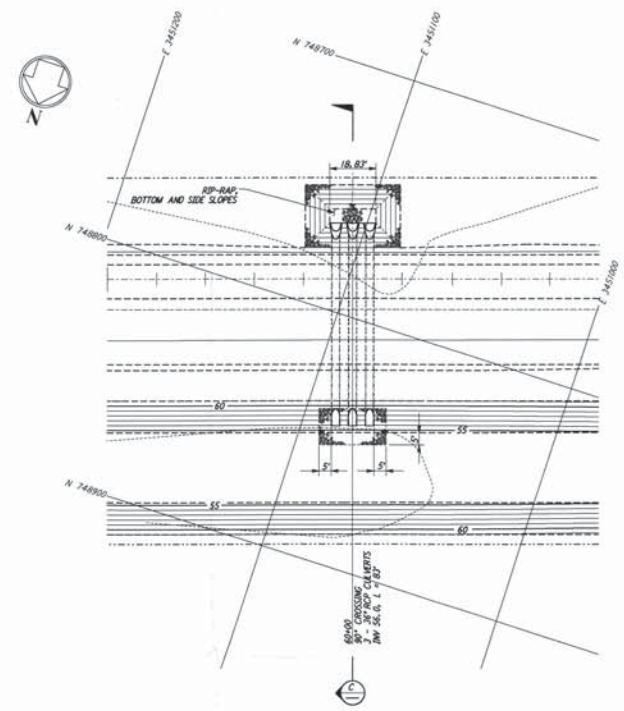
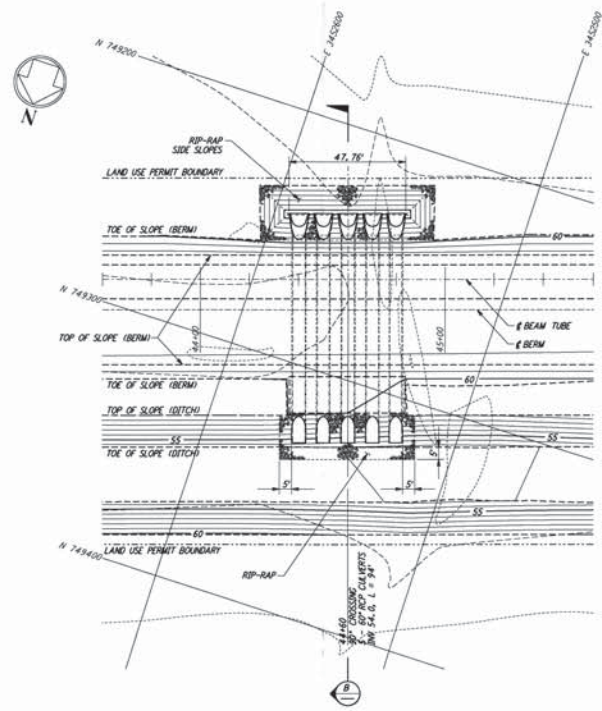
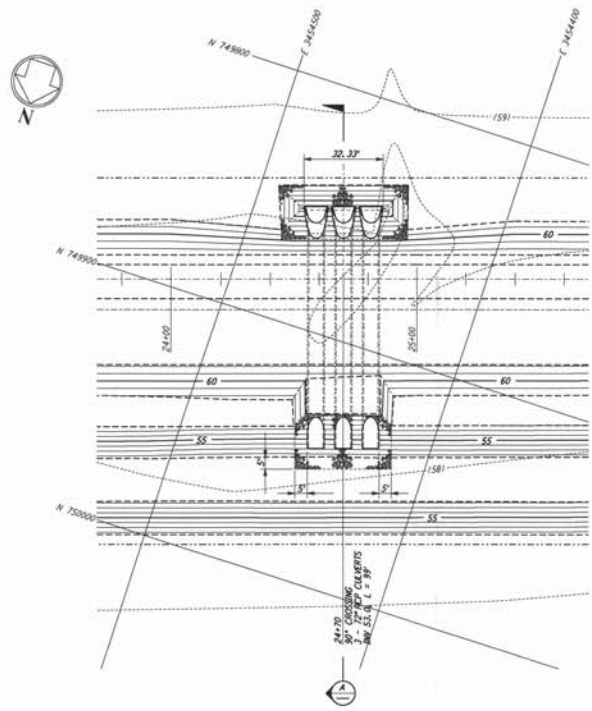
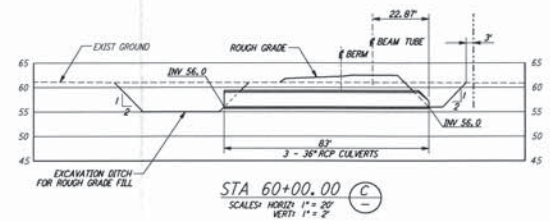
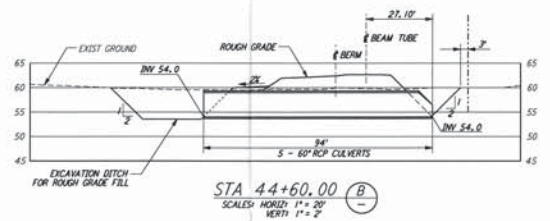
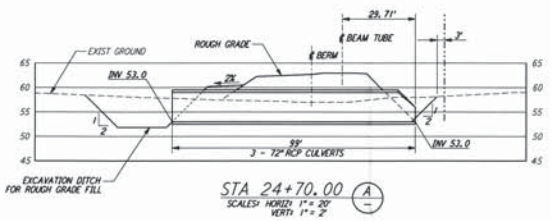


- NOTES:**
1. SEE SHEET RG-C-002 FOR GENERAL NOTES, LEGEND AND ABBREVIATIONS.
  2. CALLOUTS TYPICAL FOR ALL PLANS, UNLESS NOTED OTHERWISE.
  3. SEE SHEET RG-C-004 FOR TYPICAL SECTIONS AND DETAILS.



9				DATE	8/11/95
8				DRAWN	WSP 8/8/95
7				CHECKED	WSP 8/8/95
6				ENGINEER	WSP 8/28/95
5				PRD J MGR	WSP 8/28/95
4					
3					
2					
1					

9					
8					
7					
6					
5					
4					
3					
2					
1	8/28/95	WSP	ISSUED FOR BID		

**PARSONS**  
 100 WEST WALNUT STREET  
 PASADENA, CALIFORNIA

**LIGO**  
 CALIFORNIA INSTITUTE OF TECHNOLOGY  
 MASSACHUSETTS INSTITUTE OF TECHNOLOGY

**LASER INTERFEROMETER  
 GRAVITATIONAL-WAVE OBSERVATORY  
 ROUGH GRADING - LIVINGSTON, LA**

AS NOTED PPI50969 8094

**ROUGH GRADING  
 SOUTHWEST ARM  
 CULVERT GENERAL  
 ARRANGEMENTS**

PROJECT NUMBER: PPI50969  
 SHEET NUMBER: 8094  
**RG-C-027**

This document and the design it covers are the property of PARSONS. They are loaned only with the borrower's expressed written agreement that they will not be reproduced, copied, loaned, exhibited, or used in any other way, except by written consent from PARSONS to the borrower.

L:\m\_Sep\_12\_06\22823\_19195\_a3-236a2c-J:\PROJECTS\095\BIBB\RG-C-027.dwg

L:\m\_Sep\_12\_06\22823\_19195\_a3-236a2c-J:\PROJECTS\095\BIBB\RG-C-027.dwg