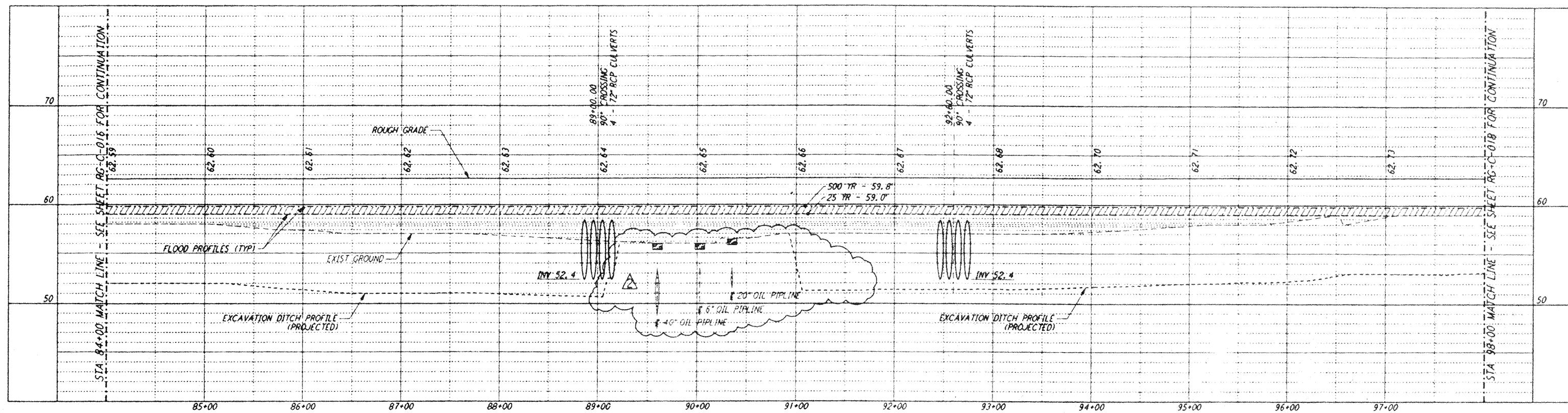


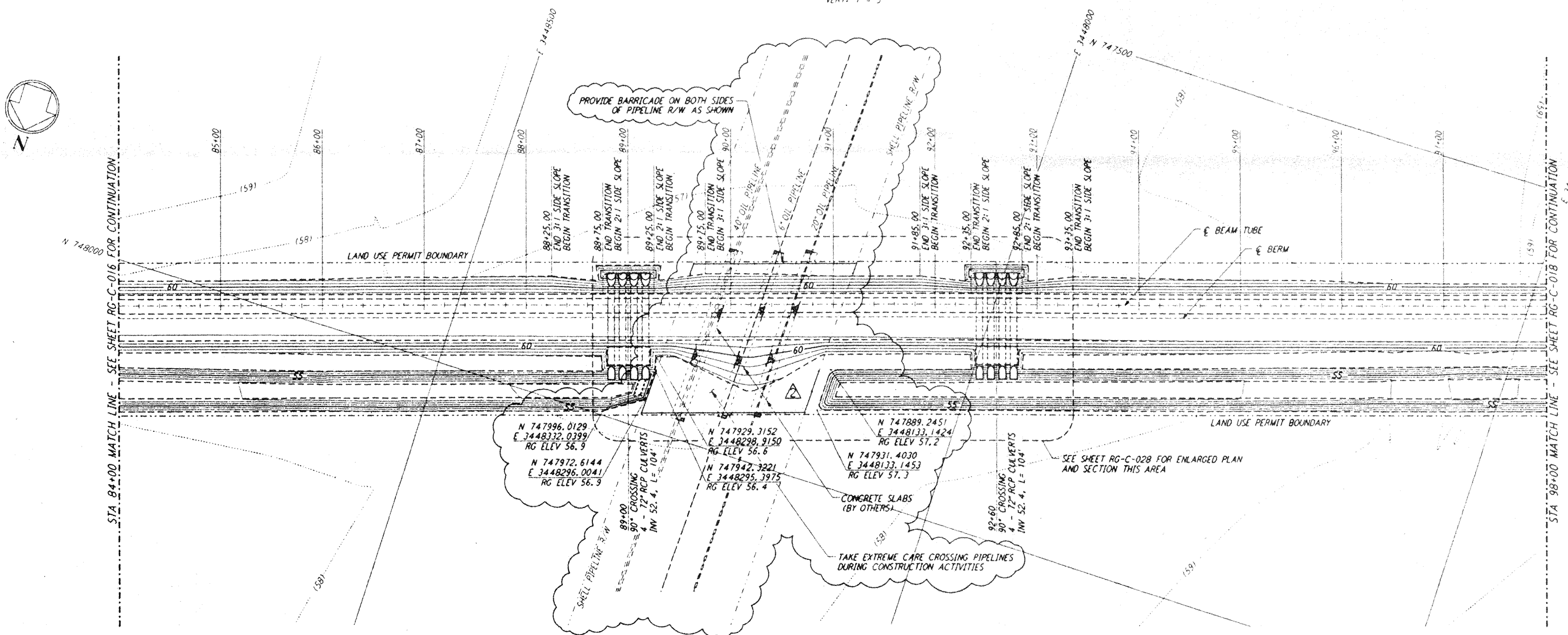
not be reproduced, copied, loaned, exhibited, or used in any other way, except by written consent from PARSONS to the borrower.

This document and the design it covers are the property of PARSONS. They are loaned only with the borrower's expressed written agreement that they will not be reproduced, copied, loaned, exhibited, or used in any other way, except by written consent from PARSONS to the borrower.

NOTES:  
1. SEE SHEET RG-C-002 FOR GENERAL NOTES, LEGEND AND ABBREVIATIONS.



PROFILE  
SCALE: HORIZ: 1" = 50'  
VERT: 1" = 5'



PLAN  
SCALE: 1" = 50'

NOTE:  
LIGO SOUTHWEST ARM CROSSING OF SHELL PIPELINE R/W OCCURS WITHIN LIVINGSTON PARISH, LOUISIANA, TOWNSHIP 6 SOUTH - RANGE 4 EAST, SECTION 3.

NO.	DATE	APRD BY	DESCRIPTION OF REVISION	NO.	DATE	APRD BY	ISSUED FOR
1	11/17/95	Tom	NO REVISIONS	1	8/28/95	Tom	ISSUED FOR BID
2	5/24/96	Tom	REVISED GRADING & PIPELINE R/W LOCATION	2	11/17/95	Tom	ISSUED FOR CONSTRUCTION
3				3	5/24/96	Tom	CHANGE ORDER NO. 6

NO.	DATE	APRD BY	DESCRIPTION OF REVISION
1	11/17/95	Tom	NO REVISIONS
2	5/24/96	Tom	REVISED GRADING & PIPELINE R/W LOCATION

NO.	DATE	APRD BY	DESCRIPTION OF REVISION
1	8/28/95	Tom	ISSUED FOR BID
2	11/17/95	Tom	ISSUED FOR CONSTRUCTION
3	5/24/96	Tom	CHANGE ORDER NO. 6

**PARSONS**  
100 WEST WALNUT STREET  
PASADENA, CALIFORNIA

**LIGO**  
CALIFORNIA INSTITUTE OF TECHNOLOGY  
MASSACHUSETTS INSTITUTE OF TECHNOLOGY

LIGO-0961723-02-0  
LASER INTERFEROMETER  
GRAVITATIONAL-WAVE OBSERVATORY  
ROUGH GRADING - LIVINGSTON, LA  
TITLE: ROUGH GRADING SOUTHWEST ARM PLAN AND PROFILE STA 84+00 TO STA 98+00  
AS NOTED PPI50969 8094  
SHEET NUMBER  
**RG-C-017**