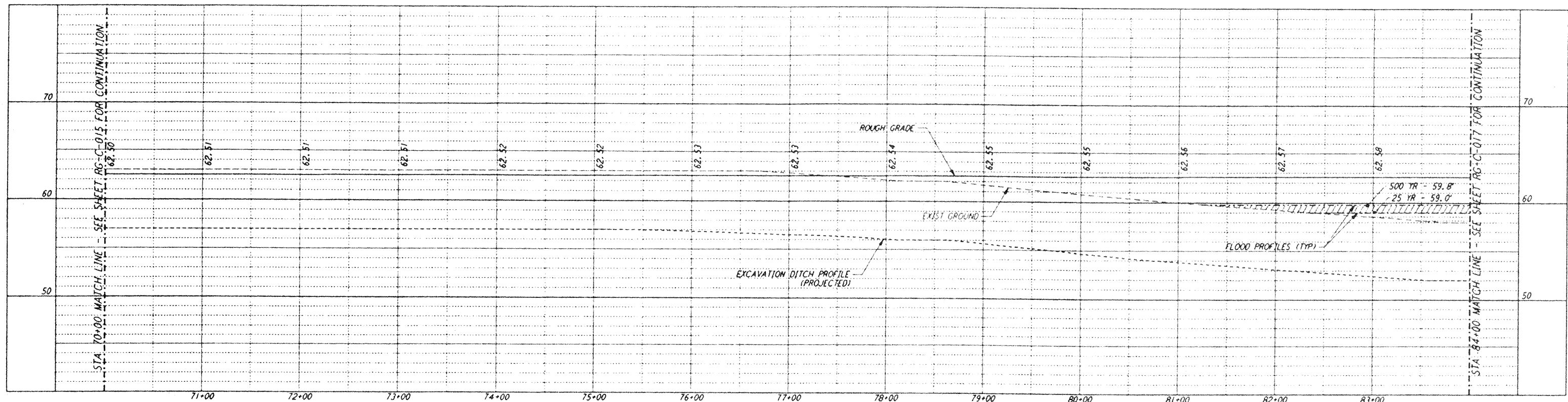
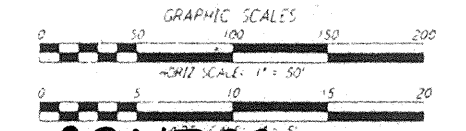
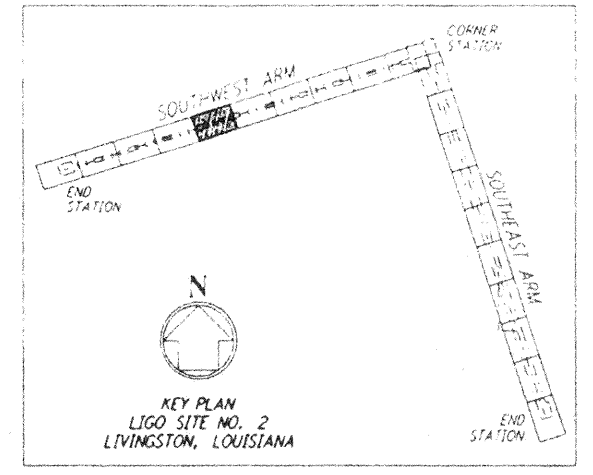
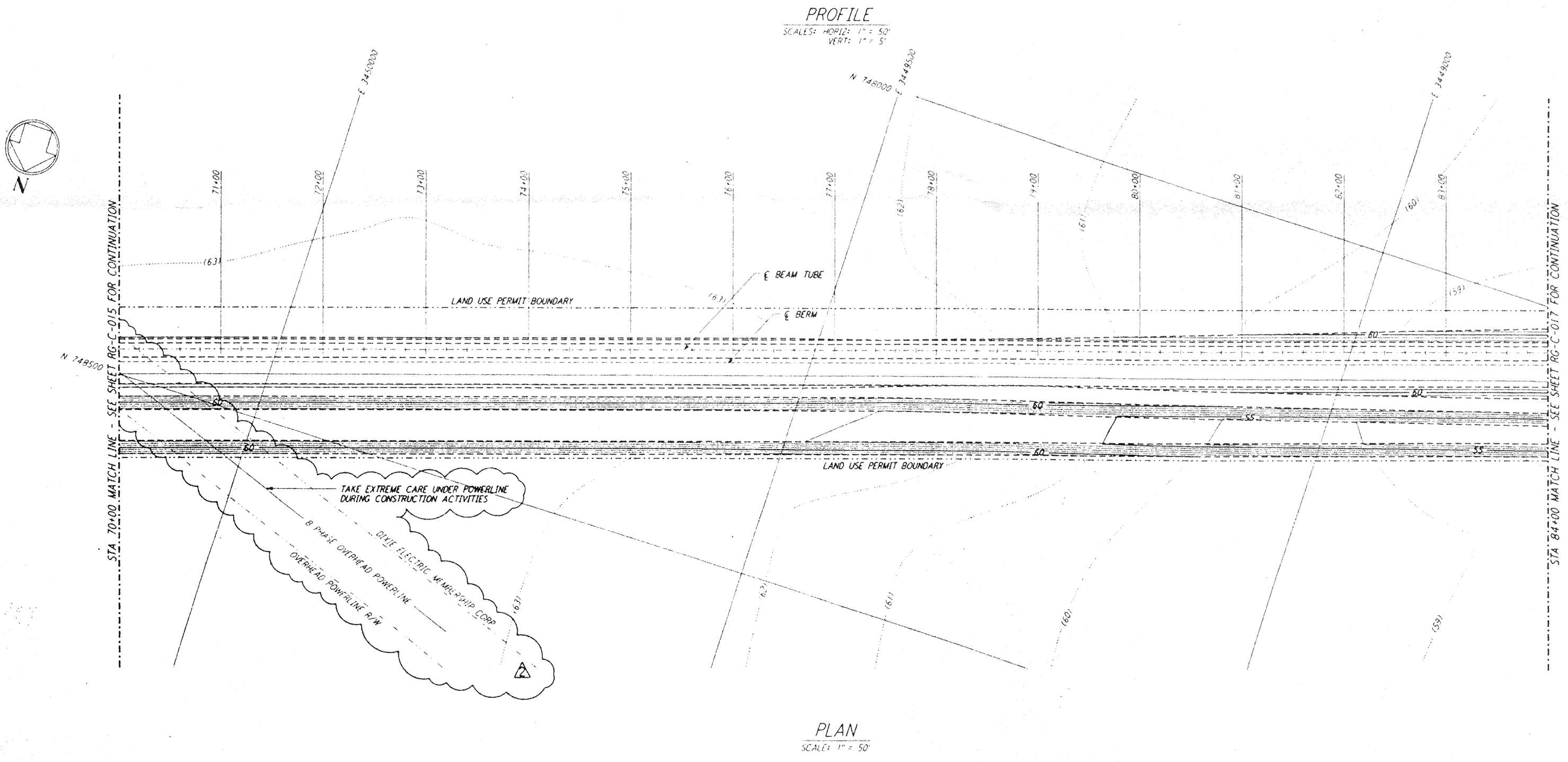


This document and the design it covers are the property of PARSONS. They are loaned only with the borrower's expressed written agreement that they will not be reproduced, copied, imaged, exhibited, or used in any other way, except by written consent from PARSONS to the borrower.



**NOTES:**  
 1. SEE SHEET RG-C-002 FOR GENERAL NOTES, LEGEND AND ABBREVIATIONS.



NO.	DATE	APPRO BY	DESCRIPTION OF REVISION
9			
8			
7			
6			
5			
4			
3	5/24/96	Tom	REVISED OVERHEAD POWERLINE R/W LOCATION
2	11/1/95	Tom	NO REVISIONS
1	8/28/95	Tom	ISSUED FOR BID

NO.	DATE	APPRO BY	ISSUED FOR
9			
8			
7			
6			
5			
4			
3	5/24/96	Tom	CHANGE ORDER NO. 6
2	11/1/95	Tom	ISSUED FOR CONSTRUCTION
1	8/28/95	Tom	ISSUED FOR BID

**PARSONS**  
 100 WEST WALNUT STREET  
 PASADENA, CALIFORNIA

**LIGO**  
 CALIFORNIA INSTITUTE OF TECHNOLOGY  
 MASSACHUSETTS INSTITUTE OF TECHNOLOGY

**LIGO-0961722-02-0**  
 LASER INTERFEROMETER  
 GRAVITATIONAL-WAVE OBSERVATORY  
 ROUGH GRADING - LIVINGSTON, LA  
 AS NOTED PP150969 8094  
**RG-C-016**