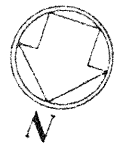
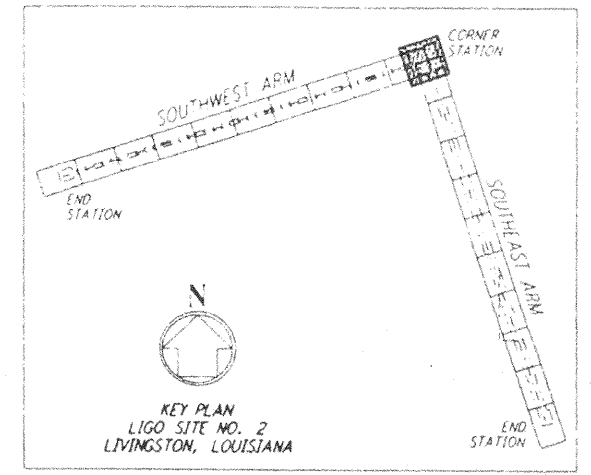
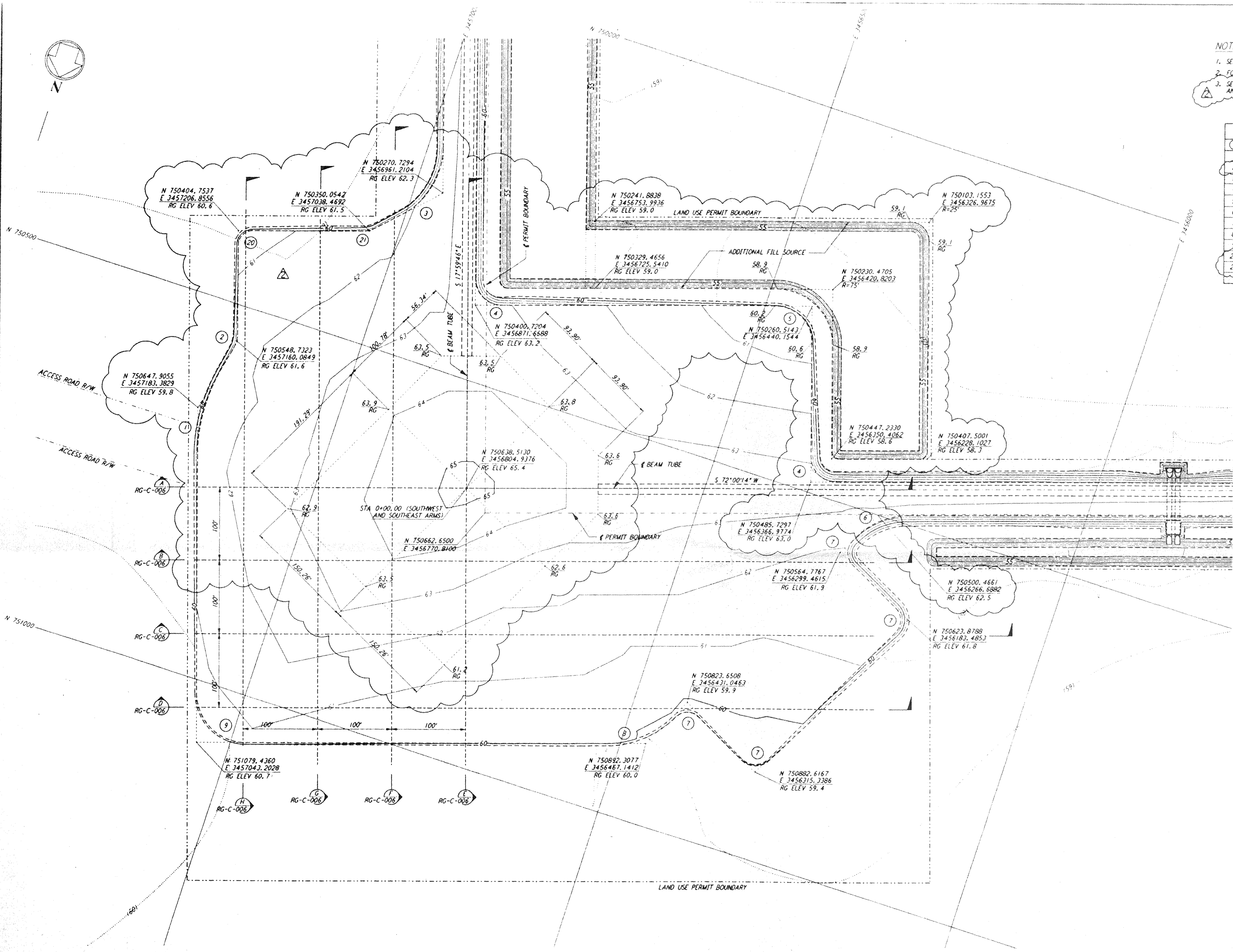


This document and the design it covers are the property of PARSONS. They are loaned only with the borrower's expressed written agreement that they will not be reproduced, copied, loaned, exhibited, or used in any other way, except by written consent from PARSONS to the borrower.



- NOTES:**
- SEE SHEET RG-C-002 FOR GENERAL NOTES, LEGEND AND ABBREVIATIONS.
  - FOR PROPERTY CORNER LOCATIONS, SEE SHEET RG-C-001.
  - SEE SHEET RG-C-002 FOR LOCATION(S) OF SETTLEMENT PLATES AND LIMITS AND NOTE REGARDING COMPACTION WITHIN FUTURE BUILDING AREA.

CURVE DATA				
NO.	Δ	RADIUS	LENGTH	TANGENT
1	31°12'59"	230.00'	125.31'	64.25'
2	31°12'59"	45.00'	24.52'	12.57'
3	62°14'25"	100.00'	108.63'	60.37'
4	90°00'00"	35.00'	54.98'	35.00'
5	90°00'00"	50.00'	78.54'	50.00'
6	45°00'00"	100.00'	78.54'	41.42'
7	90°00'00"	25.00'	39.27'	25.00'
8	44°16'19"	130.00'	100.45'	52.88'
9	90°00'00"	65.00'	102.10'	65.00'
20	90°00'00"	20.00'	31.42'	20.00'
21	27°45'35"	45.00'	21.80'	11.12'



GRAPHIC SCALE  
 0 50 100 150 200  
**LIGO - 0961715-02-0**

NO.	DATE	APPROVED BY	DESCRIPTION OF REVISION
9			
8			
7			
6			
5			
4			
3	5/24/96	[Signature]	REVISED GRADING, ADDED FILL SOURCE, ADDED NOTE
2	11/1/95	[Signature]	NO REVISIONS
1	8/28/95	[Signature]	ISSUED FOR BID

NO.	DATE	APPROVED BY	ISSUED FOR
9			
8			
7			
6			
5			
4			
3	5/24/96	[Signature]	CHANGE ORDER NO. 6
2	11/1/95	[Signature]	ISSUED FOR CONSTRUCTION
1	8/28/95	[Signature]	ISSUED FOR BID

DATE	BY
8/11/95	WRG
8/8/95	WRG
8/28/95	WRG
8/28/95	WRG

**PARSONS**  
 100 WEST WALNUT STREET  
 PASADENA, CALIFORNIA

**LIGO**  
 CALIFORNIA INSTITUTE OF TECHNOLOGY  
 MASSACHUSETTS INSTITUTE OF TECHNOLOGY

LAZER INTERFEROMETER  
 GRAVITATIONAL-WAVE OBSERVATORY  
 ROUGH GRADING - LIVINGSTON, LA

ROUGH GRADING  
 CORNER STATION

1" = 50'  
 PP150969 8094  
**RG-C-005**