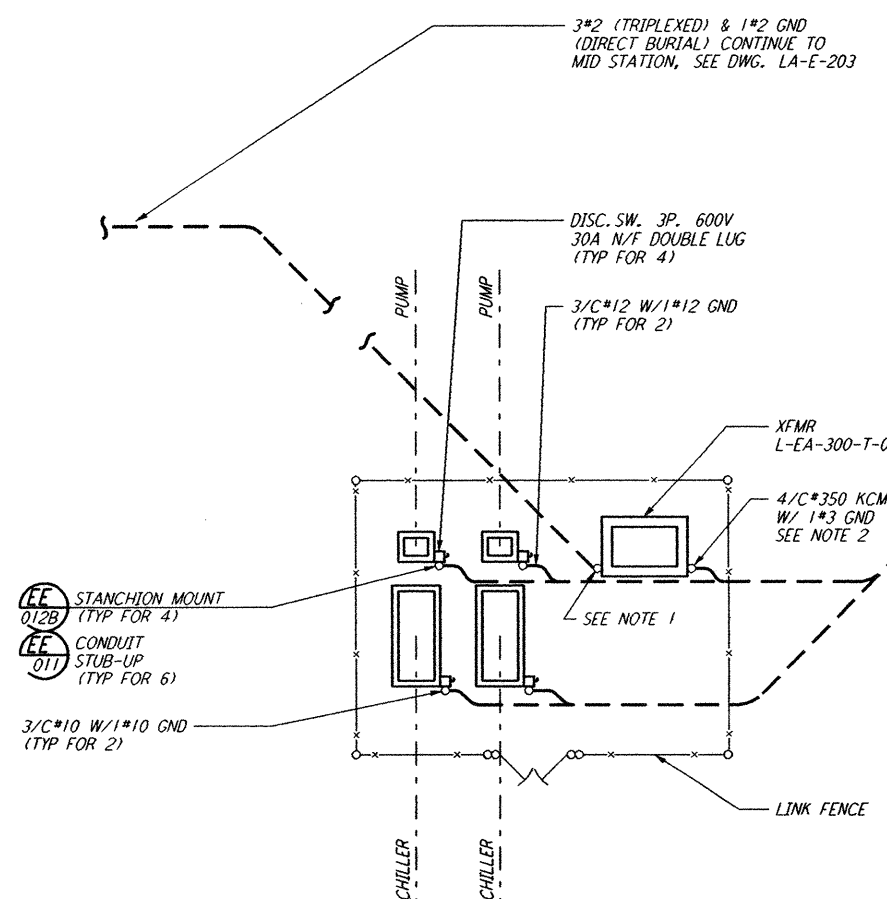
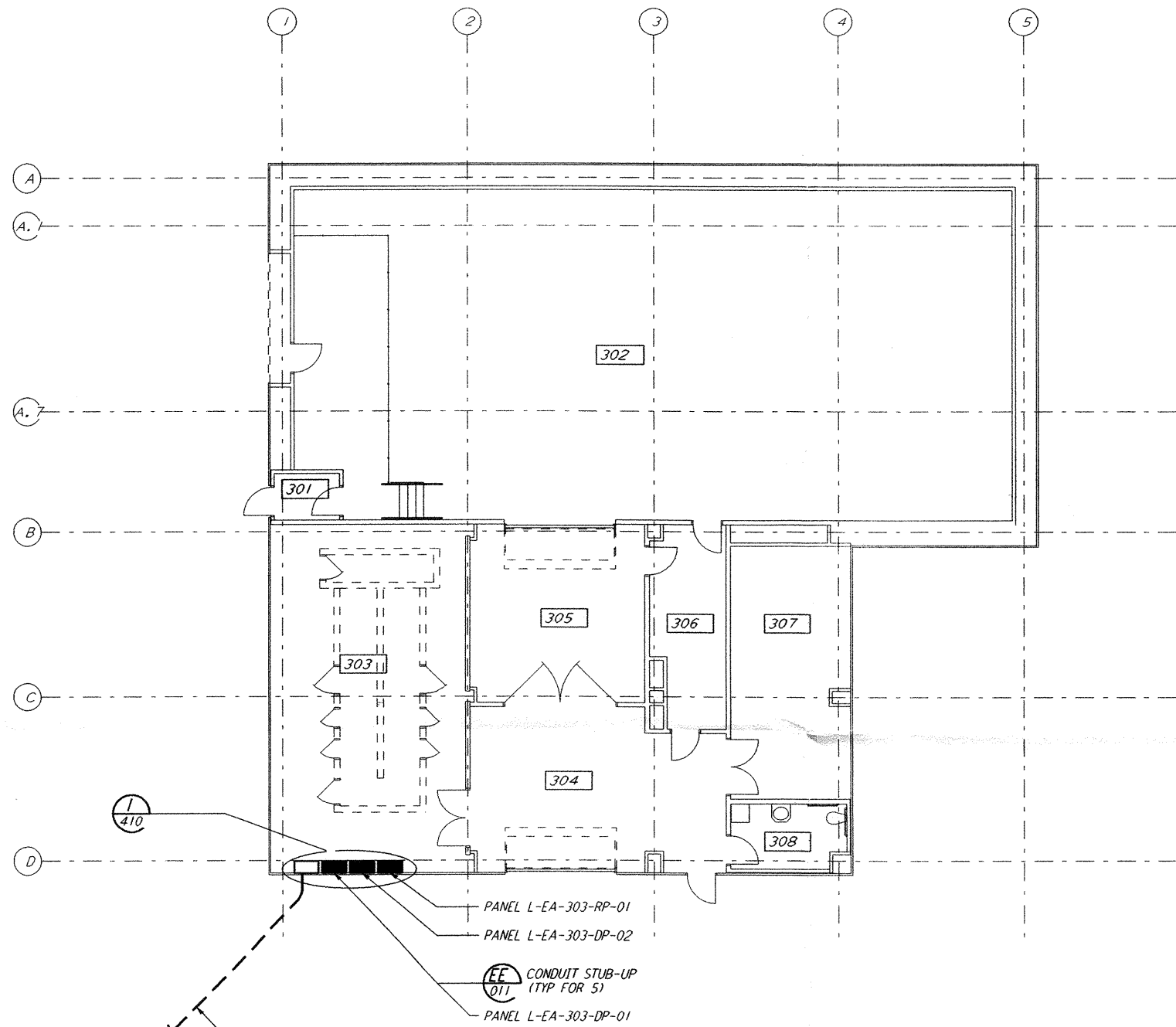
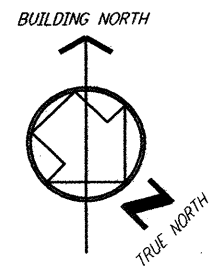


**GENERAL NOTES:**

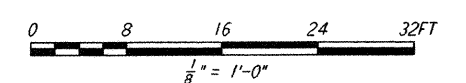
1. FOR STANDARD SYMBOLS, ABBREVIATIONS AND ACRONYMS SEE DWG. LA-E-001.
2. FOR ELECTRICAL SYMBOLS SEE DWG. LA-E-002.
3. FOR STANDARD INSTALLATION DETAILS SEE DWG. LA-E-406 AND LA-E-407.
4. FOR CABLE SCHEDULE SEE DWG. LA-E-007.
5. ALL RUNS ARE SHOWN DIAGRAMMATICALLY ONLY. CONTRACTOR SHALL COORDINATE WITH OTHER DISCIPLINES TO AVOID CONFLICT.
6. FOR PANEL DIAGRAM, SEE DWG. LA-E-005.
7. FOR EQUIPMENT EXACT LOCATION, SEE MECHANICAL DWG. LA-E-311.

**NOTES:**

1. EXTEND CONDUIT INTO TERMINATION BOX, CONNECT TO DISCONNECTING MEANS AND PRIMARY BUSHINGS ACCORDINGLY.
2. EXTEND CONDUIT INTO TERMINATION BOX, CONNECT TO SECONDARY BUSHINGS ACCORDINGLY.



**POWER PLAN**



L160-D961708-A-0

NO.	DATE	APRD BY	DESCRIPTION OF REVISION
9			
8			
7			
6			
5			
4			
3			
2			
1			

NO.	DATE	APRD BY	ISSUED FOR
A	10-31-95	TDM	PRELIMINARY DESIGN REVIEW

DATE	10-31-95
DRAWN	J. G.
CHECKED	
ENGINEER	
PROJ MGR	

**PARSONS**  
 100 WEST WALNUT STREET  
 PASADENA, CALIFORNIA

**LIGO**  
 CALIFORNIA INSTITUTE OF TECHNOLOGY  
 MASSACHUSETTS INSTITUTE OF TECHNOLOGY

**LASER INTERFEROMETER  
 GRAVITATIONAL-WAVE OBSERVATORY  
 SITE NO.2 - LIVINGSTON, LOUISIANA**

TITLE	ELECTRICAL END STATION POWER PLAN	SCALE	AS NOTED	CONTRACT NUMBER	PP150969	PROJECT NUMBER	8094
REVISIONS	<b>LA-E-303</b>						

This document and the design it covers are the property of PARSONS. They are loaned only with the borrower's expressed written agreement that they will not be reproduced, copied, loaned, exhibited, or used in any other way, except by written consent from PARSONS to the borrower.

Mon Oct 30 23:55:04 1995 s3-v1862 J:\PLOTS\QUEUES\V18B2\EE303.PR