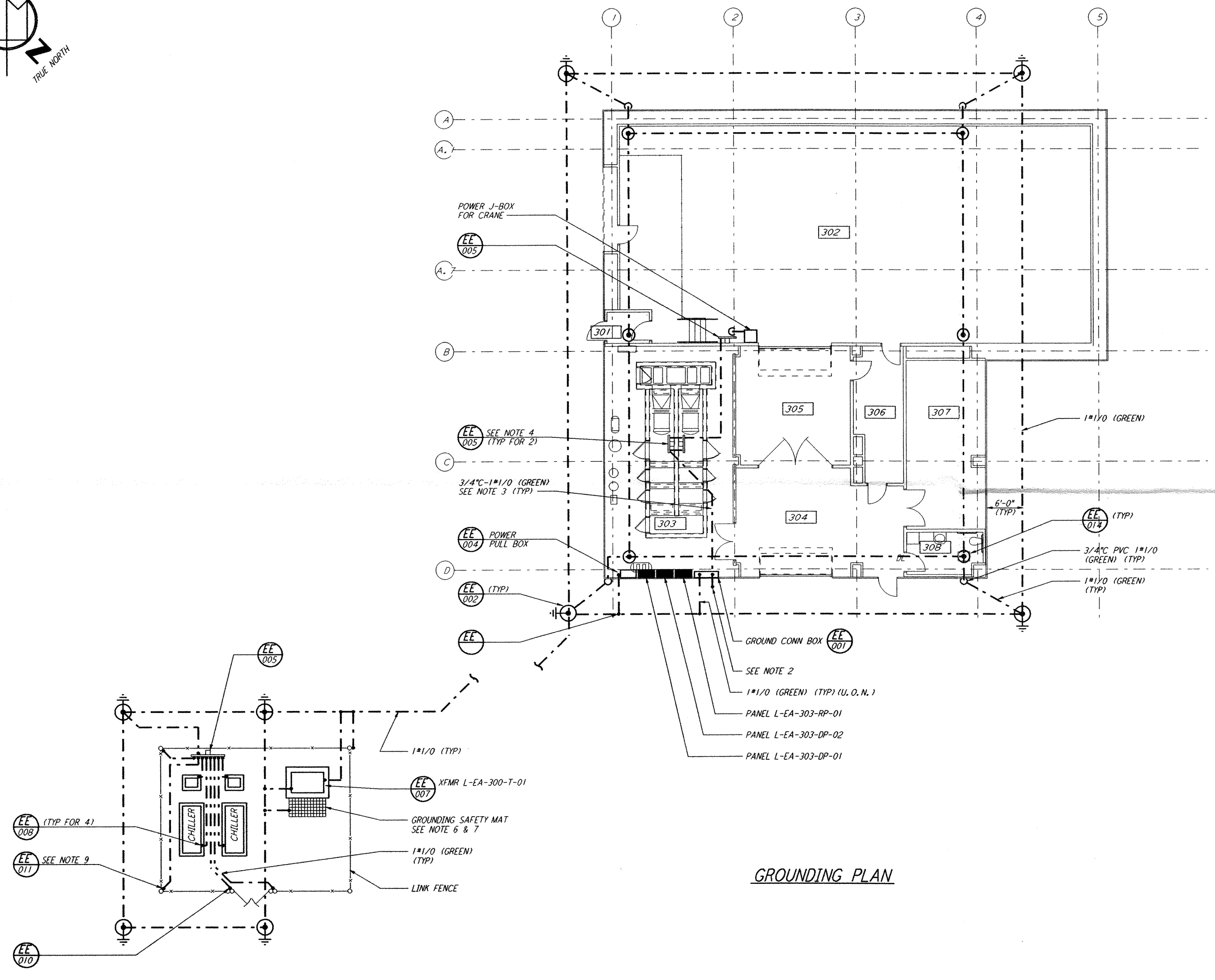
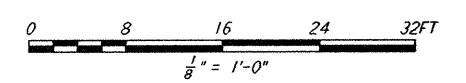


**NOTES:**

1. FOR GENERAL NOTES SEE DWG. LA-E-103.
2. CONNECT GROUNDING CONDUCTOR TO FOUNDATION BAR AT BOTTOM, BAR SHALL BE AT LEAST 20 FT LONG, 3/4" DIAMETER.
3. ALL GROUND WIRES ROUTED ABOVE GRADE SHALL BE IN PVC CONDUIT OR NON-METALLIC LIQUID-TIGHT FLEXIBLE CONDUIT.
4. ALL METAL PARTS SUPPORTING AIR HANDLING UNITS SHALL BE GROUNDED WITH 1#1/0 (GREEN) IN PVC CONDUIT. CONNECT TO GROUNDING PLATES. METAL-TO-METAL PARTS SHALL BE BONDED WITH 1#1/0 (GREEN) STRANDED SOFT DRAWN CU. WIRE.
5. TRANSFORMER GROUNDING IS LOW RESISTANCE TYPE, CONNECT GROUND CONDUCTOR TO NEUTRAL AND CASE.
6. GROUNDING MAT FOR PERSONNEL PROTECTION SHALL BE PREFABRICATED 4' X 6', SIZE 6" X 8" APART, WIRE NO. 6 AWG, 40% CONDUCTIVITY COPPERWELD, WITH CENTER WIRE # 1/0 AWG, ERICO MFR. CABLE TO MESH TYPE PT, MOLD PTC-1G2C, WELD METAL #65.
7. GROUNDING MAT SHALL BE INSTALLED 12" DEEP MIN. ADJACENT TO HIGH VOLTAGE PRIMARY SIDE.
8. CONSULT CIVIL DWG. FOR ACTUAL LOCATIONS OF CHILLERS TRANSFORMERS.
9. EVERY OTHER POST SHALL BE GROUNDED TO GROUNDING PLATE. CONTRACTOR SHALL FURNISH ADDITIONAL GROUNDING PLATE AS DEEMED NECESSARY.



GROUNDING PLAN



LIGO-D961707-A-□

LASER INTERFEROMETER  
 GRAVITATIONAL-WAVE OBSERVATORY  
 SITE NO. 2 - LIVINGSTON, LOUISIANA

TITLE	SCALE	CONTRACT NUMBER	PROJECT NUMBER
ELECTRICAL END STATION GROUNDING AND LIGHTNING PROT. PLAN	AS NOTED	PP150969	8094
SHEET NUMBER		REVISIONS	
LA-E-302		▲	

**PARSONS**  
 100 WEST WALNUT STREET  
 PASADENA, CALIFORNIA

**LIGO**  
 CALIFORNIA INSTITUTE OF TECHNOLOGY  
 MASSACHUSETTS INSTITUTE OF TECHNOLOGY

DATE	10-31-95
DRAWN	J. G.
CHECKED	
ENGINEER	
PROJ MGR	

NO.	DATE	APRD BY	DESCRIPTION OF REVISION
1	10-31-95	TDM	PRELIMINARY DESIGN REVIEW
2			
3			
4			
5			

NO.	DATE	APRD BY	DESCRIPTION OF REVISION
1			
2			
3			
4			
5			

This document and the design it covers are the property of PARSONS. They are loaned only with the borrower's expressed written agreement that they will not be reproduced, copied, loaned, exhibited, or used in any other way, except by written consent from PARSONS to the borrower.

Mon Oct 30 23:53:39 1995 s3-v1862 J:\PLOTS\QUEUES\18B2\EE302.PR