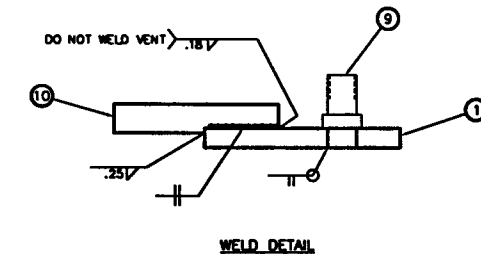
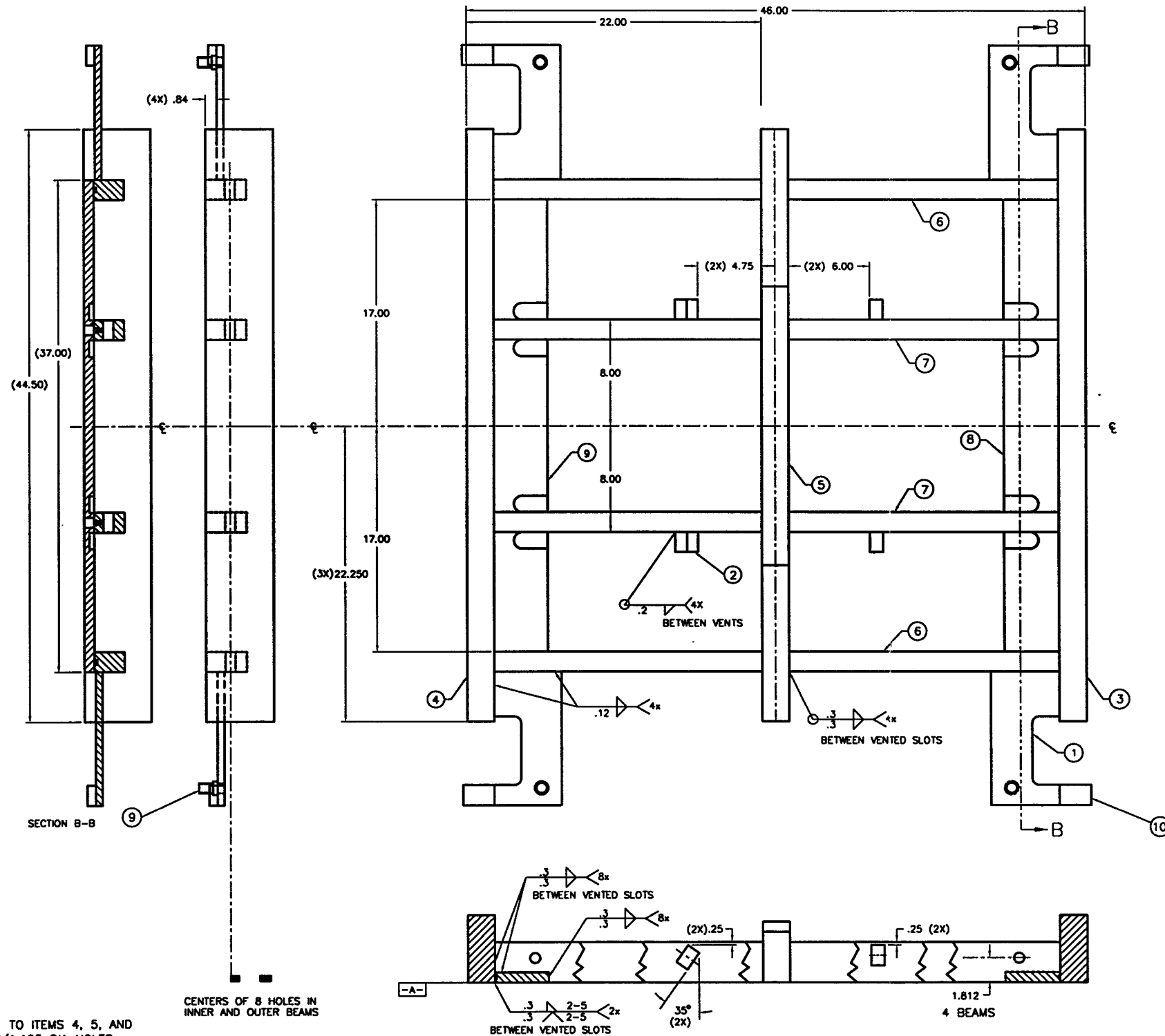


REV.	DESCRIPTION	DATE
A	RELEASED	10-29-96
B	4.75 DIM WAS 6.50; REDRAWN	11-19-96



WELD DETAIL
 EACH CARRIAGE WELDMENT REQUIRES:
 2 EA. AS SHOWN
 2 EA. OPPOSITE

DEC 19 1996
 PSI DWG # V049-8-568
 L140-D961683-B-V

ITEM	QTY.	PART NO.	DESCRIPTION
11	1	A103799	BLOCK, ANTI-ROTATION
10	4	A103732	STOP BAR, CARRIAGE WELD'T
9	4	A103734	AXLE GUIDE WHEEL
8	2	2103250	FRONT/REAR STIFF.
7	2	2103249	INNER BEAM
6	2	2103248	OUTER BEAM
5	1	2103247	INTER. CROSS MEMBER
4	1	2103246	REAR CROSS MEMBER
3	1	2103245	FRONT CROSS MEMBER
2	4	1103239	CARRIAGE ADJUSTMENT BLOCK
1	4	A103731	AXLE PLATE, CARRIAGE WELD'T

NOTES:
 PRIOR TO WELDING ITEM 1 TO ITEMS 4, 5, AND 7, DRILL AND REAM 1.127/1.125 DIA HOLES (6X) PER DWG. # 4103236-02.
 ITEM 11 NOT SHOWN. TO BE ADDED DURING FINAL ASSEMBLY, IN APPROPRIATE LOCATION TO PREVENT ROTATION OF WELDMENT, CONNECTING SOCKET.
 PROTECT ALL SURFACES FROM SCRATCHES, GOUGES AND TOOLING MARKS DURING HANDLING

PART LIST		MATERIAL SPECIFICATION	
UNLESS OTHERWISE SPECIFIED DIMENSIONS ARE IN INCHES TOLERANCES ARE DECIMALS ANGLES PER 11.01	CONTRACT OR SALES ORDER NO.	 SCIENTIFIC AND INDUSTRIAL EQUIPMENT 30971 San Benito Court HAYWARD, CALIFORNIA 94544 (510) 441-1900 FAX: (510) 441-0830	
APPROX. WT. 700#	APPROVALS DATE		
THIRD ANGLE PROJECTION	DRAWN BY CHECKED BY		
DO NOT SCALE DRAWING	ENGINEER ZH 1-22-96	TITLE (FINAL) CARRIAGE WELDMENT G44	DATE NO. 103789
USED ON	CADD FILE NAME D103789B	SCALE: NONE	SHEET 1 OF 1