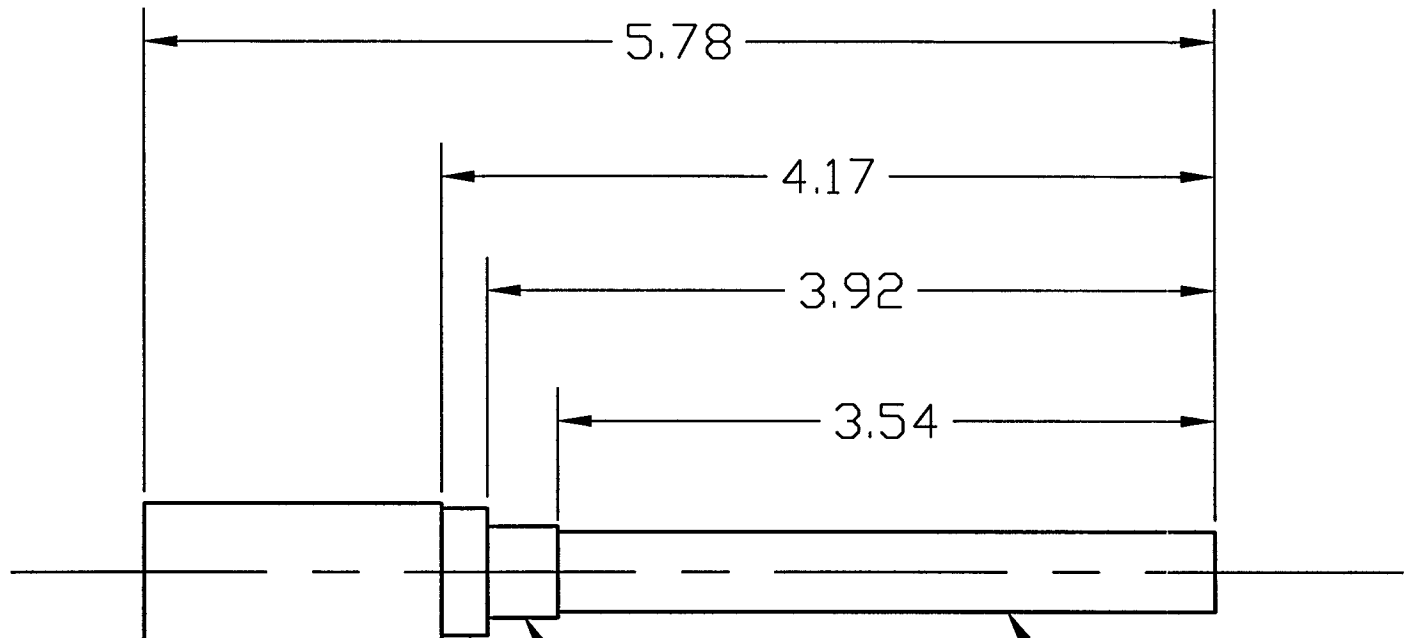


REVISIONS			
REV.	DESCRIPTION	APPROVED	DATE
A	RELEASED	AJL	10/15/96
B	.503/.501 DIA WAS .508/.507 DIA	AJL	11-6-96



.750/.745 DIA

.695 DIA

.503/.501 DIA
 VERIFY AS SLIP
 FIT INTO CF FLANGE
 PROVIDED FOR WELD'T.

.438/.436 DIA

DEC 19 99

PSI DWG # V049-8-557
 LIGO-D961673-B-V

B103747
 USED ON

		3/4" DIA BAR	
ITEM	QTY.	PART NO.	DESCRIPTION
PART LIST			MATERIAL SPECIFICATION: T304L
<small>UNLESS OTHERWISE SPECIFIED DIMENSIONS ARE IN INCHES TOLERANCES ARE: DECIMALS ANGLES FINISH .XX ± .01 ± 1° 32/ .XXX ± .005</small>		CONTRACT OR SALES ORDER NO. APPROX. WT. APPROVALS DATE DRAFTER AJL 10/15/96 CHECKER ENGINEER	
<small>UNSPECIFIED FILLETS: R.015 BREAK EDGES .010 ± 45° REMOVE ALL BURRS</small>		TITLE LOCK ROD LIGO G44, G48	
<small>THIRD ANGLE PROJECTION</small> 		DWG. NO. 103748	
<small>DO NOT SCALE DRAWING</small>		SCALE: NONE	
CADD FILE NAME B103748B		SHEET 1 OF 1	