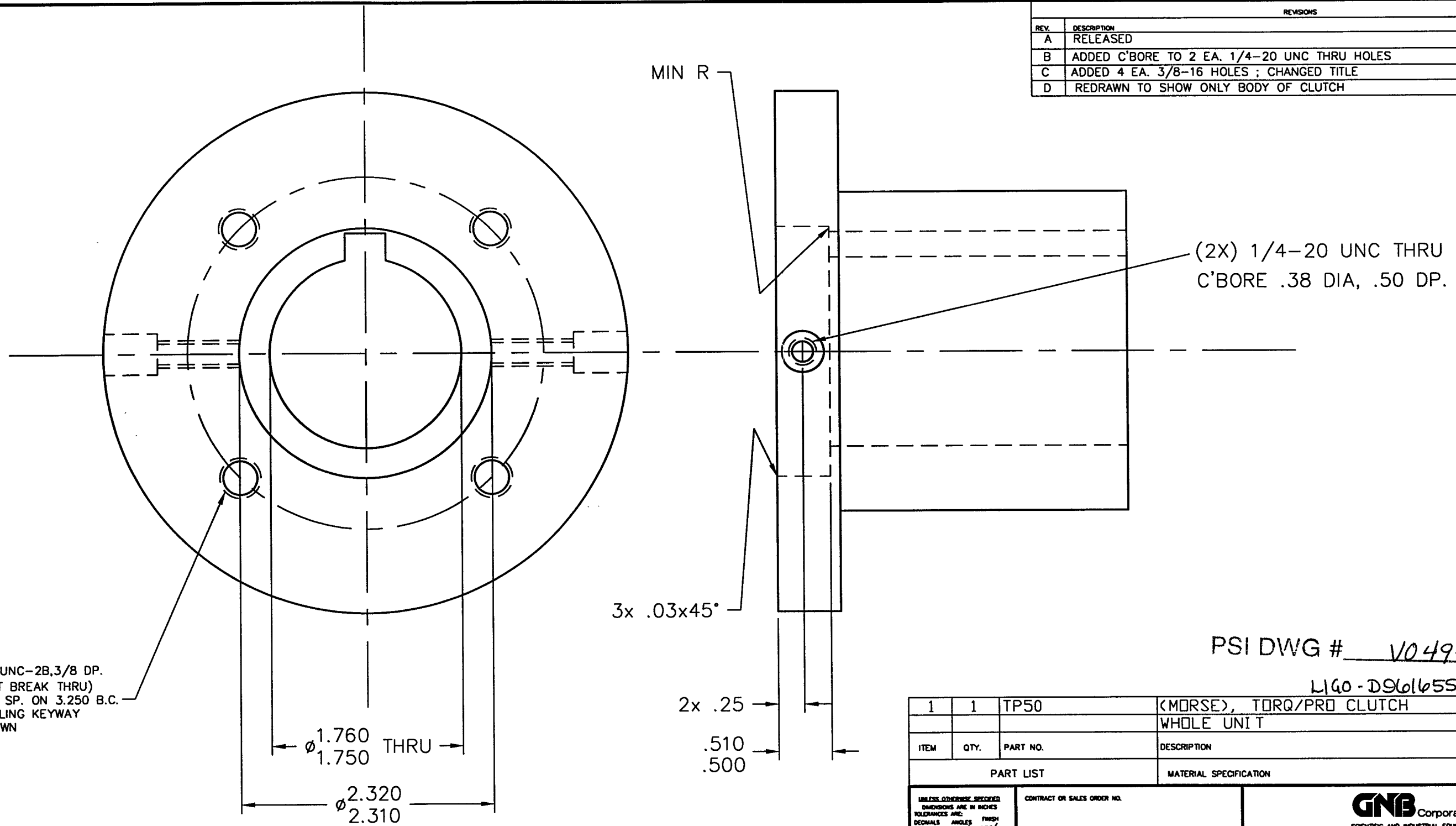


REVISIONS			
REV.	DESCRIPTION	APPROVED	DATE
A	RELEASED		
B	ADDED C'BORE TO 2 EA. 1/4-20 UNC THRU HOLES		
C	ADDED 4 EA. 3/8-16 HOLES ; CHANGED TITLE	AJL	8/30/96
D	REDRAWN TO SHOW ONLY BODY OF CLUTCH	AJL	10/9/96



DEC 19 1996

PSI DWG # V049-8-539

L160-D961655-D-V

ITEM	QTY.	PART NO.	DESCRIPTION
1	1	TP50	(MORSE), TORQ/PRO CLUTCH
			WHOLE UNIT

UNLESS OTHERWISE SPECIFIED DIMENSIONS ARE IN INCHES TOLERANCES ARE: DECIMALS ANGLES FINISH .XX ± .01 ± 10' 125' XXX ± .005 //C.I. WITHIN .05 UNSPECIFIED FILED EDGES BREAK EDGES .010 ± .010 REMOVE ALL BURRS		CONTRACT OR SALES ORDER NO.		<p>GNB Corporation SCIENTIFIC AND INDUSTRIAL EQUIPMENT 30871 San Benito Court HAYWARD, CALIFORNIA 94544 (510) 441-1900 FAX: (510) 441-0839</p>	
THIRD ANGLE PROJECTION		APPROX. WT. 13#			
DO NOT SCALE DRAWING		APPROVALS		DATE 8/30/96	
CADD FILE NAME B103312D		DRAWN BY		TITLE CLUTCH BODY, MODIFIED G44E, G48E	
USED ON		ENGINEER AJL		REV. B Dwg. No. 103312	
		SCALE: NONE		SHEET 1 OF 1	

NOTES:
FINAL CLEANING TO MEET
GNB SPEC. PER UHV