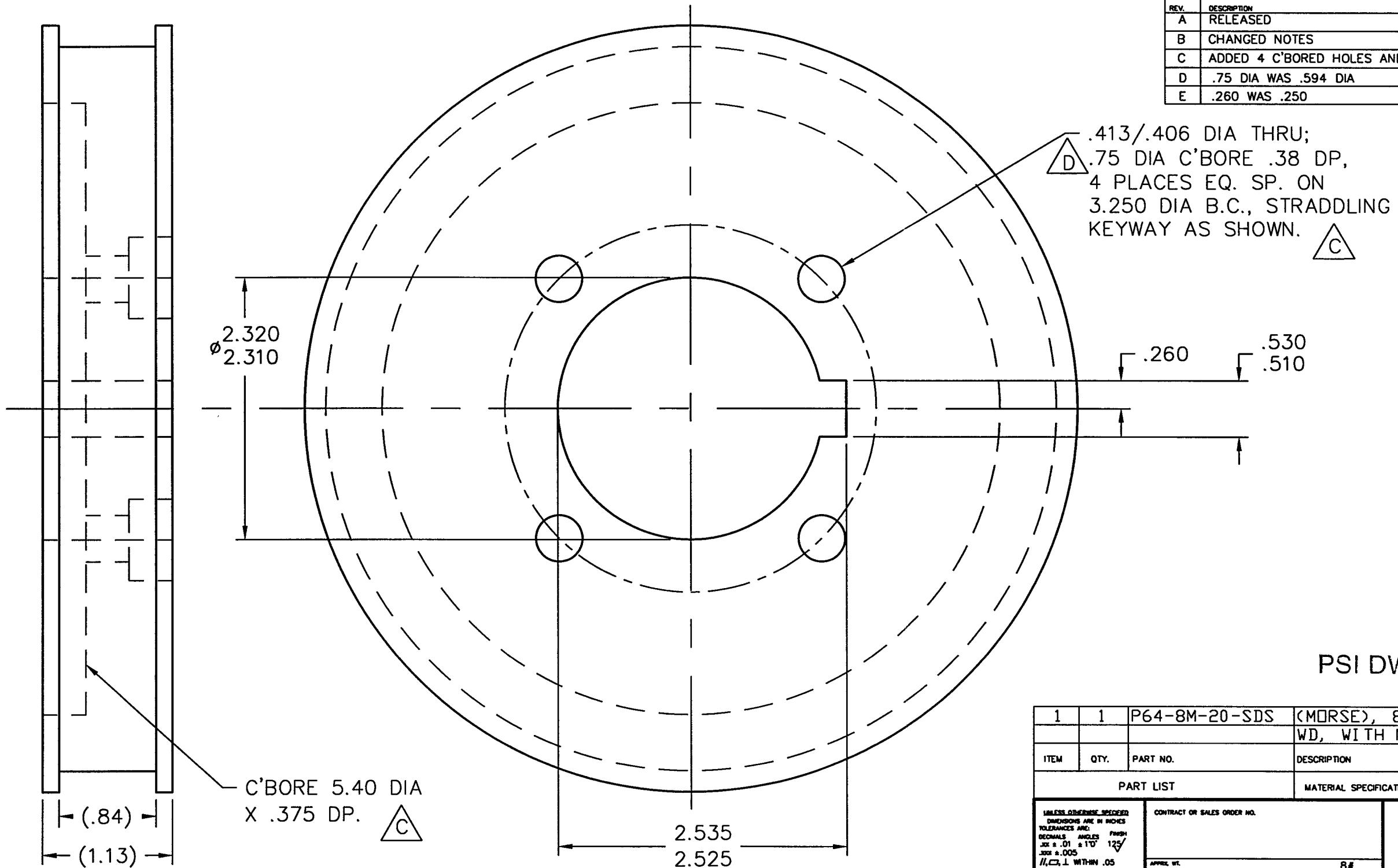


REVISIONS			
REV.	DESCRIPTION	APPROVED	DATE
A	RELEASED		
B	CHANGED NOTES		
C	ADDED 4 C'BORE HOLES AND 5.40 DIA C'BORE; RETITLED	AJL	8-23-96
D	.75 DIA WAS .594 DIA	AJL	10/2/96
E	.260 WAS .250	AJL	11/21/96



DEC 19 1996

PSI DWG # V049-8-536  
L140-D961652-E-V

ITEM	QTY.	PART NO.	DESCRIPTION
1	1	P64-8M-20-SDS	(MORSE), 8MM SPROCKET, 64 TEETH, 20 MM WD, WITH NO BUSHING, NO TAPPED HOLES

UNLESS OTHERWISE SPECIFIED DIMENSIONS ARE IN INCHES TOLERANCES ARE: DECIMALS ANGLES .01 ± .01 ± 10' 125' .005 ± .005 H.C.T. WITHIN .05 UNSPECIFIED FILED RADIUS BREAK EDGES .010 ± .010 REMOVE ALL BURRS		CONTRACT OR SALES ORDER NO.		<b>GNB Corporation</b> SCIENTIFIC AND INDUSTRIAL EQUIPMENT 30971 San Benito Court HAYWARD, CALIFORNIA 94544 (510) 441-1900 FAX: (510) 441-0838	
THIRD ANGLE PROJECTION		APPROVALS			
DO NOT SCALE DRAWING		ENGINEER	ZH	DATE	2-14-96
CADD FILE NAME		B103307E		TITLE	PULLEY, DRIVESHAFT G44E, G48E
USED ON		B103786		DWG. NO.	103307-01
				SCALE:	NONE
				SHEET	1 OF 1
				REV.	E

NOTES:  
 FINAL CLEANING TO MEET  
 GNB SPEC. PER UHV