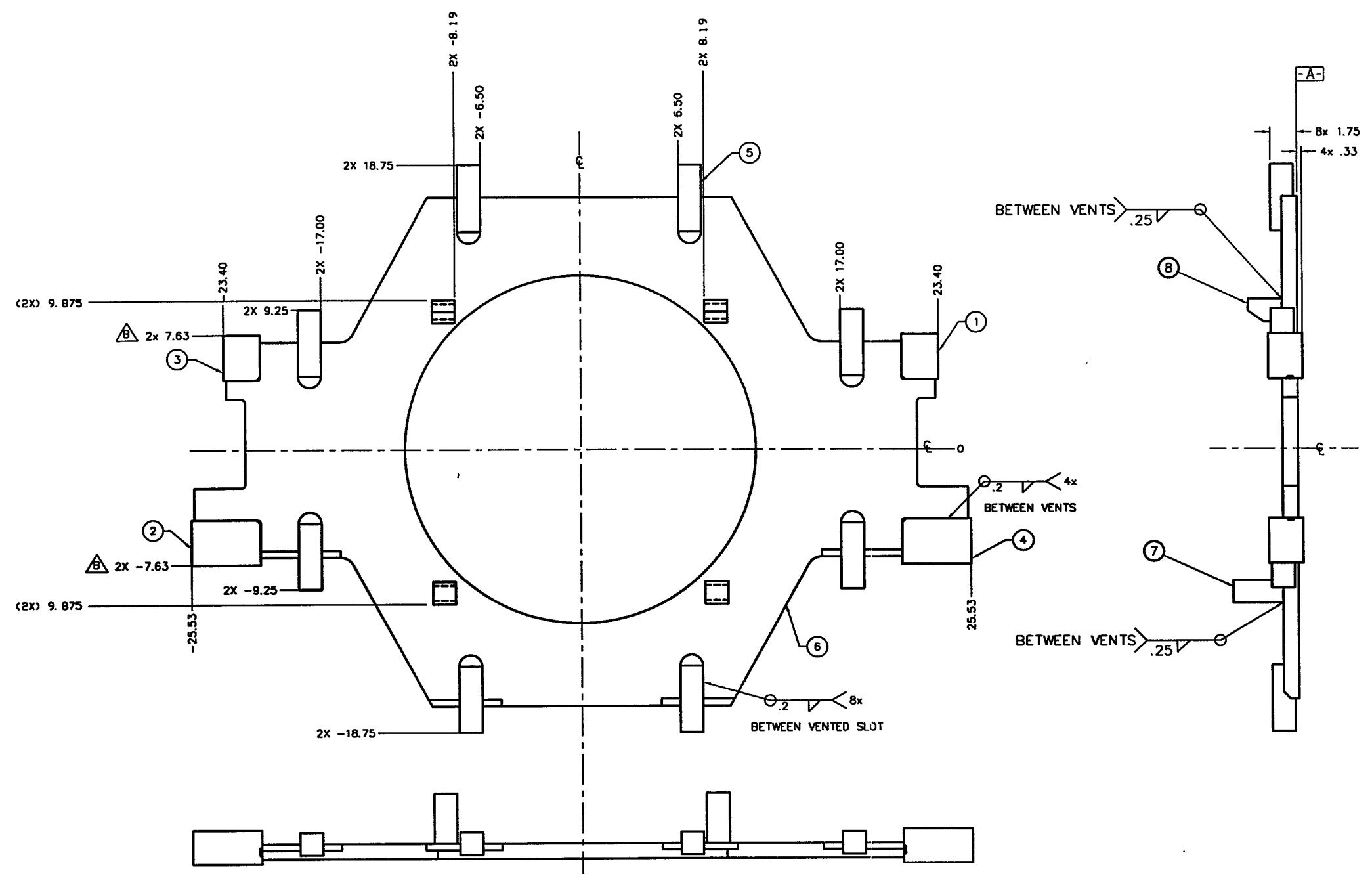


REV.	DESCRIPTION	APPROVED	DATE
A	RELEASED		
B	ADD 7.63, REMOVE STIFFENERS		1-27-96
C	ADDED THE WELD DETAIL		
D	REMOVED WELD DETAIL; ADDED ITEMS 7 & 8 TO B.O.M.; ADDED NOTE; REDRAWN SHOWING RELIEF FOR LINKS	A.L.	10/28/96
E	REDRAWN SHOWING ITEMS 7 AND 8	A.L.	11-19-96



L160-D961646-E-V DEC 19 1996
 PSI DWG # V049-8-530

ITEM	QTY.	PART NO.	DESCRIPTION
8	2	B103794	STOP BLOCK, CARRIAGE COLLAPSE
7	2	B103795	STOP BLOCK, CARRIAGE LOCKOVER
6	1	D103801	PLATE, GATE FRAME
5	8	1103230	LINK PIN HOUSING
4	1	1103229-12	AXLE HOUSING (RIGHT)
3	1	1103229-11	AXLE HOUSING (LEFT)
2	1	1103229-02	AXLE HOUSING (LEFT)
1	1	1103229-01	AXLE HOUSING (RIGHT)

PART LIST		MATERIAL SPECIFICATION 304 SST	
UNLESS OTHERWISE SPECIFIED DIMENSIONS ARE IN INCHES TOLERANCES ARE: DECIMALS ANGLES FINISH X.X ± .03 ± 10° 12° X.XX ± .010 X.XX ± .01 WITHIN .05 UNDRIPPED FILLER 45° BREAK EDGES 45° ± 5° REMOVE ALL BURRS		CONTRACT OR SALES ORDER NO. APPROVALS DATE DRAWN BY CHECKED BY DATE	
THIRD ANGLE PROJECTION DO NOT SCALE DRAWING CADD FILE NAME USED ON		 GNB Corporation SCIENTIFIC AND INDUSTRIAL EQUIPMENT 30871 San Benito Court HAYWARD, CALIFORNIA 94544 (510) 441-1900 FAX: (510) 441-0830 TITLE GATE FRAME WELDMENT G44 DWG. NO. 103228 SCALE: NONE SHEET 1 OF 1	

NOTES:
 PROTECT ALL SURFACES FROM SCRATCHES,
 GOUGES AND TOOLING MARKS DURING HANDLING