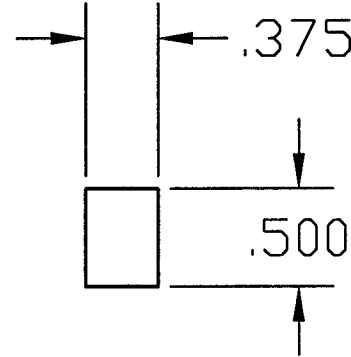
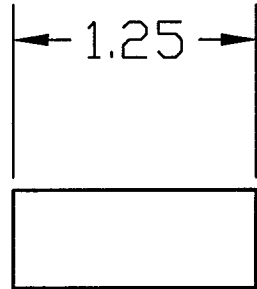


REVISIONS			
REV.	DESCRIPTION	APPROVED	DATE
A	RELEASED	AJL	11-20-96



DEC 19 1996

PSI DWG # 1049-8-527

ITEM	QTY.	PART NO.	DESCRIPTION
			FLAT BAR, 3/8 X 1/2
PART LIST			MATERIAL SPECIFICATION: 304 SST
<small>UNLESS OTHERWISE SPECIFIED DIMENSIONS ARE IN INCHES TOLERANCES ARE: DECIMALS ANGLES FINISH .XX ± .01 ± 1° 0' 32/ .XXX ± .005</small>		<small>CONTRACT OR SALES ORDER NO.</small>  <small>APPROX. WT.</small> <small>APPROVALS</small> <small>DATE</small> <small>THIRD ANGLE PROJECTION</small> <small>DO NOT SCALE DRAWING</small>	
<small>UNSPECIFIED FILLETS: R.015 BREAK EDGES .010 ± 45° REMOVE ALL BURRS</small>		<small>DRAFTER</small> AJL <small>DATE</small> 11-20-96 <small>CHECKER</small> <small>ENGINEER</small>	
<small>D103294</small> <small>USED ON</small>		<small>30971 San Benito Ct. HAYWARD, CALIFORNIA 94544 (510) 441-1900 FAX: (510) 441-0939</small> <small>TITLE</small> KEY, DRIVE G44E, G48E <small>DWG. NO.</small> 103901 <small>SCALE:</small> NONE <small>SHEET</small> 1 <small>OF</small> 1	
<small>CADD FILE NAME</small> A103901A		<small>REV.</small> A	

REV. A  
DWG. NO. 103901  
A

110-D961643-A-V