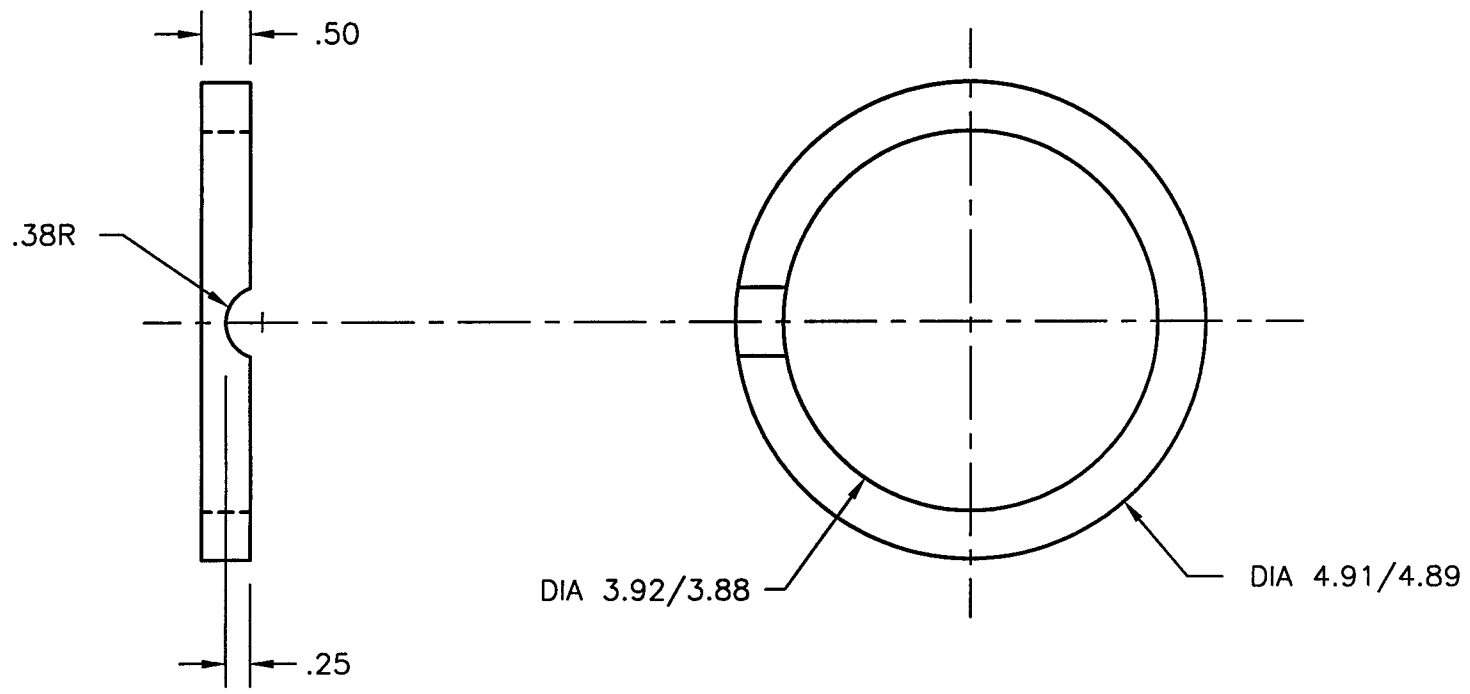


REVISIONS			
REV.	DESCRIPTION	APPROVED	DATE
A	RELEASED	AJL	10/15/96



PSI DWG # V049-8-516

REV. A
DWG. NO. 103769

ITEM	QTY.	PART NO.	DESCRIPTION
PART LIST			MATERIAL SPECIFICATION: T304
<small>UNLESS OTHERWISE SPECIFIED DIMENSIONS ARE IN INCHES TOLERANCES ARE: DECIMALS ANGLES FINISH .XX ± .01 ± 10' 32/ .XXX ± .005</small>		<small>CONTRACT OR SALES ORDER NO.</small> GNB Corporation <small>SCIENTIFIC AND INDUSTRIAL EQUIPMENT</small> <small>30971 San Benito Ct. HAYWARD, CALIFORNIA 94544 (510) 441-1900 FAX: (510) 441-0939</small>	
<small>UNSPECIFIED FILLETS: R.015 BREAK EDGES .010 @ 45° REMOVE ALL BURRS</small>		<small>APPROX. WT.</small> <small>APPROVALS</small>	
<small>THIRD ANGLE PROJECTION</small> 		<small>DRAFTER</small> AJL	<small>DATE</small> 10/15/96
<small>DO NOT SCALE DRAWING</small>		<small>CHECKER</small> 	<small>ENGINEER</small>
<small>CADD FILE NAME</small> A103769A		<small>TITLE</small> RING, BEARING SUPPORT LIGO G44E, G48E	
<small>USED ON</small>		<small>DWG. NO.</small> A 103769	<small>REV.</small> A
		<small>SCALE:</small> NONE	<small>SHEET 1 OF 1</small>

LIGO-D961632-A-V