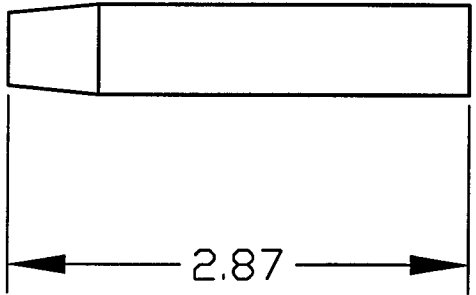


REVISIONS			
REV.	DESCRIPTION	APPROVED	DATE
A	RELEASED	AJL	11-5-96



DEC 19 1996

PSI DWG # V049-8-511

ITEM	QTY.	PART NO.	DESCRIPTION
	1		PIPE NIPPLE, 1/4" NPT, 6" LONG (MAKES 2 PCS)

PART LIST	MATERIAL SPECIFICATION: WELDABLE ALUMINUM
------------------	--

<small>UNLESS OTHERWISE SPECIFIED DIMENSIONS ARE IN INCHES TOLERANCES ARE: DECIMALS ANGLES FINISH .XX ± .01 ± 1° 32/✓ .XXX ± .005</small> <small>UNSPECIFIED FILETS: R.015 BREAK EDGES .010 ± 45° REMOVE ALL BURRS</small> <small>THIRD ANGLE PROJECTION</small> <small>DO NOT SCALE DRAWING</small>	CONTRACT OR SALES ORDER NO.	
	APPROX. WT.	
	APPROVALS	DATE
	DRAFTER AJL	11-5-96
CHECKER		
ENGINEER		

GNB Corporation
SCIENTIFIC AND INDUSTRIAL EQUIPMENT
30971 San Benito Ct.
HAYWARD, CALIFORNIA 94544
(510) 441-1900 FAX: (510) 441-0939

TITLE	MODIFIED NIPPLE
-------	------------------------

B103759
USED ON

CADD FILE NAME	A103761A
----------------	----------

A	DWG. NO.	103761	REV.	A
SCALE:	NONE	SHEET 1	OF 1	

REV. A
DWG. NO. 103761
A

H90-D961627-A-V