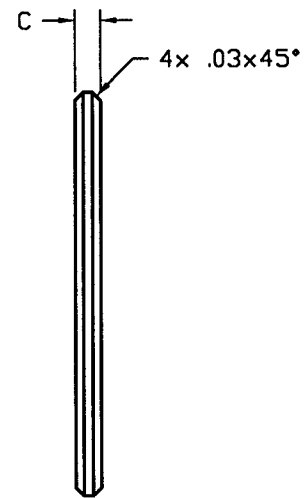
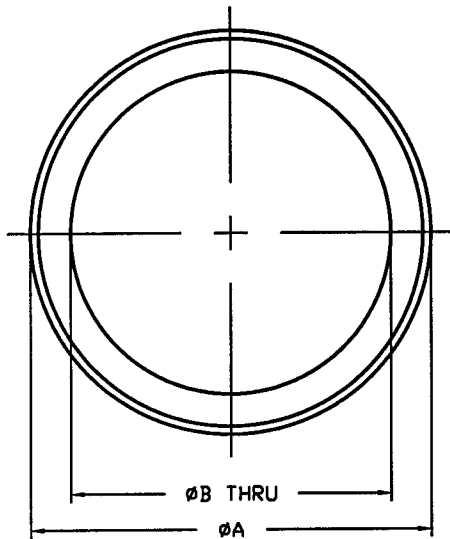


REV. A 103252

DASH No.	ØA	ØB	C
-01	1.50/1.44	1.195/1.185	.094/.090
-02	1.00/.94	.765/.755	.135/.125

REVISIONS			
REV.	DESCRIPTION	APPROVED	DATE
A	RELEASED	AJL	10-28-96



//	.010	A	◊	.010
-A-				

NOTES:

- 01 USED ON A103253
- 02 USED ON A103254 AND ON A103831
- FINAL CLEANING PER ASSY-LG-001

DEC 19 1996

PSI DWG # 1049-8-499

ITEM	QTY.	PART NO.	DESCRIPTION
PART LIST			MATERIAL SPECIFICATION: T304L
<small>UNLESS OTHERWISE SPECIFIED DIMENSIONS ARE IN INCHES TOLERANCES ARE: DECIMALS ANGLES FINISH .XX ± .01 ± 1° 0' 32/ .XXX ± .005</small>		<small>CONTRACT OR SALES ORDER NO.</small>	
<small>UNSPECIFIED FILLETS: R.015 BREAK EDGES .010 ± 45° REMOVE ALL BURRS</small>		<small>APPROX. WT.</small>	
<small>THIRD ANGLE PROJECTION</small> 		<small>APPROVALS</small>	
<small>DO NOT SCALE DRAWING</small>		<small>DATE</small>	
<small>CADD FILE NAME</small>		<small>DRAFTER</small>	
<small>USED ON</small>		<small>CHECKER</small>	
<small>SEE NOTES</small>		<small>ENGINEER</small>	
<small>103252A</small>		<small>10-28-96</small>	
<small>103252A</small>		<small>WASHER</small>	
<small>A</small>		<small>DWG. NO. 103252</small>	
<small>SCALE: NONE</small>		<small>REV. A</small>	
<small>SHEET 1</small>		<small>OF 1</small>	

REV. A
A
DWG. NO. 103252

L190-DS61615-A-V